

KTM POWERPARTS STREET 2017

READY TO RACE
» www.ktm.com



KTM

50-STATE**50**

50-State Legal

CCCUO

Closed course competition use only

MAP**MAP**

There is specially developed engine software (mapping) for products marked with the MAP symbol. This closed course competition use only mapping has been designed by our engine development department for optimum performance as well as durability of the components and can only be uploaded by an Authorized KTM dealer.

002**PARTS WITH POWER**

The name speaks for itself. Whether you're looking to boost performance and optimize weight for the racetrack, increase comfort and for that motorcycling ADVENTURE or personalize style for road use – original KTM PowerParts bestow every KTM with the necessary advantage on the road. Furthermore, close collaboration with the Racing division and premium manufacturers guarantees the highest quality and a precise fit, making your motorcycle READY TO RACE at all times.

DISCLAIMER

Some items in the KTM PowerParts product line are not approved for use on public roads (varies from country to country). Further information can be obtained from your authorized KTM dealer.





390 DUKE	004
RC 390	034
690 DUKE/ENDURO R	056
ADVENTURE	098
1290 SUPER DUKE R / GT	138
TOOLS	170

INTENSIFIED BY THE DETAILS



905109510

935.05.999.000 **50**

390 DUKE

17

NEW

AKRAPOVIČ "SLIP-ON LINE"

Unique sound, more style and less weight with a long service life:

- » Carbon outer sleeve
- » Carbon end cap
- » Plug & play assembly
- » Perfect workmanship

The following parts cannot be used in combination with this exhaust system:

- » 610.29.955.244 / 902.29.955.044 Bobbins For Rear Wheel Stand
- » 901.10.945.000 Rear Slide Pads



930.05.984.000 **NEW**

390 DUKE

17

BRACKET FOR SLIP-ON SILENCER

Uncompromising race look for your KTM, without any annoying passenger foot pegs:

- » Manufactured from high-strength, durable steel
- » Extremely light and torsion resistant
- » Fitted to the passenger foot peg mounting points





905.02.931.044

390 DUKE 15 – 17

FOLDABLE AND ADJUSTABLE CLUTCH LEVER

905.13.950.044

390 DUKE 15 – 16

FOLDABLE AND ADJUSTABLE BRAKE LEVER

"Form follows function" – our PowerParts levers are a visual highlight with technical and ergonomical added value.

- » CNC-machined from high-strength aluminum
- » Tough black anodized surface finish
- » Lever can fold away
- » Adjustable grip width

008

938.02.984.044

390 DUKE 15 – 17

"RACE STYLE" BRAKE AND CLUTCH LEVER GUARD

Derived from MotoGP and our RC CUP bikes:

- » Protects the lever in the event of unintentional ground contact
- » No unintentional lever actuation in the event of contact with another rider / vehicle
- » Simple exchange with the standard handlebar weight
- » Lever guard made from unbreakable plastic
- » Handlebar fitting made from high-grade cast aluminum
- » Plastic guard can be replaced individually



These high-quality aluminum CNC components feature a superior abrasion-resistant eloxal coating and make a bold visual statement.



901.38.906.000 / 04 **NEW**

390 DUKE

16 – 17

750.38.041.100

390 DUKE

15

FACTORY OIL FILTER COVER



772.30.902.144

390 DUKE

15 – 17

FACTORY IGNITION COVER PLUG



908.13.903.000

390 DUKE

15 – 17

HANDBRAKE CYLINDER COVER



901.13.930.144

390 DUKE

15 – 17

REAR BRAKE RESERVOIR CAP

Including remote reservoir.



901.08.904.044

390 DUKE 15 – 16

HEADLIGHT MASK

Small headlight mask for an aggressive look.
Supplied with enclosed decal.



901.07.940.044

390 DUKE 15 – 16

PASSENGER SEAT COVER

Create a race look in a matter of seconds; no tools required.



613.03.946.044 **NEW**

390 DUKE 15 – 17

PASSENGER FOOT PEG SLIDERS

Protects the passenger foot pegs from damage in the event of impact.
For mounting on the passenger foot pegs.

901.04.960.044

390 DUKE 15 – 16

STAINLESS STEEL CHAINGUARD



930.04.961.044 **NEW**

390 DUKE 17

STAINLESS STEEL CHAINGUARD



601.03.923.050 **NEW**

390 DUKE 15 – 17

SIDE STAND SHOE

With this larger stand foot, your bike always
has a secure footing, even on soft ground.



901.03.940.044 / 01S

901.03.940.044 / 33S

390 DUKE

15 – 17

FOOT PEGS



905.13.950.033 / 33S

390 DUKE

15 – 16

BRAKE PEDAL

This forged aluminum lever replaces the original part and offers a premium alternative to the standard lever thanks to the material and anodized coating. Step plate for brake lever is mountable in 3 different positions.



905.34.931.033 / 33S

390 DUKE

11 – 17

SHIFT LEVER

This forged aluminum lever replaces the original part and offers a premium alternative to the standard lever thanks to the material and anodized coating. Step plate for shift lever is mountable in 3 different positions.





905.10.951.041 / 04 T41

905.10.951.042 / 04 T42

905.10.951.043 / 04 T43

905.10.951.044 / 04 T44

905.10.951.045 / 04 T45

905.10.951.046 / 04 T46

390 DUKE

15 – 17

ALUMINUM REAR SPROCKET

Manufactured from high-strength 7075-T6 aluminum – the world's strongest aluminum.



503.10.800.118 / 04

390 DUKE

15 – 17

520 Z-RING CHAIN

Do you know about the differences and advantages of a Z-ring or X-ring chain, compared to an O-ring chain?

- » Both the Z-ring and X-ring have 4 contact points in contrast to 2 contact points with the O-ring chain
- » This means higher flexibility and better running characteristics for Z-ring and X-ring chains
- » The spring effect for Z-ring and X-ring chains provide consistent and permanent lubrication
- » This means a significantly longer service life for Z-ring and X-ring chains
- » The Z-ring and X-ring chains provide a better seal against penetration from water and dirt



"Form follows function" – our PowerParts ignition cover and clutch cover protectors not only have a high grade appearance, but they also protect the engine cover from damage.

- » CNC-machined aluminum protector with an orange anodized surface
- » Base support made from black anodized aluminum
- » Individually replaceable protectors
- » Specifically adapted to the shape of the engine cover
- » Tested in the KTM RC CUP



908.12.967.144 **NEW**

390 DUKE 16–17

908.12.967.044

390 DUKE 15

CLUTCH COVER PROTECTION WITH ALUMINUM SLIDER

014



908.12.966.144 **NEW**

390 DUKE 16–17

908.12.966.044

390 DUKE 15

IGNITION COVER PROTECTION WITH ALUMINUM SLIDER



TOOLS

1290 SUPER DUKE R / GT

ADVENTURE

690 DUKE/
ENDURO R

RC 390

390 DUKE

902.09.960.000

390 DUKE 15 – 16

WAVE BRAKE DISC 300 MM

- » 300 mm diameter / 5 mm thick
- » For models with ABS



The advantages of our brake discs:

- » Extremely high quality base materials for more brake power without fading
- » Improved braking in all conditions
- » Floating mounting: no distortion, no brake vibration
- » Precise pressure point throughout the entire temperature range
- » Manufactured from corrosion resistant stainless steel
- » Black anodized inner ring
- » Compatible with Radial RoadLok 902.12.932.000

933.09.960.044 **NEW**

390 DUKE 17

908.09.960.044

390 DUKE 15 – 16

WAVE BRAKE DISC 320 MM

- » 320 mm diameter / 5 mm thick
- » Includes brake caliper mounting kit for models with standard 300 mm brake disc



780.13.920.000 FRONT

770.13.920.000 REAR

390 DUKE

15-17

BRAKE BLEEDER SCREW

Bleeding the brakes or changing the brake fluid is completed in a matter of seconds, even on your own: First replace the original bleeder screw on the brake caliper with this new bleeder screw equipped with a check valve. When changing the brake fluid or bleeding the system, simply release the screw on the check valve by a half turn and pump the brake fluid through the system with the brake lever. The valve prevents air from forcing its way back into the system on releasing the brake lever. Supplied with an anodized dust cap.



930.07.911.000 **NEW**

390 DUKE

17

TANK PAD



611.09.099.000

390 DUKE

15-17

611.09.099.000 / 20

390 DUKE

15-17

RIM STICKER SET

Pre-cut sticker, suitable for front and rear rim.

17"

17"



901.07.011.000

390 DUKE

15-16

TANK PAD



613.09.999.000

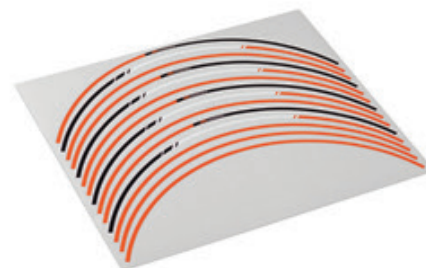
390 DUKE

15-17

RIM STICKER SET

Three-colored design

- » Set for front and rear wheel
- » Pre-cut stickers



930.08.991.000 **NEW**

390 DUKE

17

901.07.914.000

390 DUKE

15-16

TANK PROTECTION STICKER

Lasting protection for the paintwork at areas of the fuel tank subject to heavy wear.

- » Made from a high quality, elastic base film
- » Structured surface for better grip
- » No more unsightly scratches or matte areas on the tank



901.07.909.000

390 DUKE

15-16

TANK CAP STICKER



901.08.002.000

390 DUKE 15–16

HEADLIGHT MASK LEFT

901.08.041.000

390 DUKE 15–16

REAR END TOP SECTION LEFT

902.08.020.000

390 DUKE 15–16

UNDER-ENGINE FAIRING

901.08.003.000

390 DUKE 15–16

HEADLIGHT MASK RIGHT

901.08.042.000

390 DUKE 15–16

REAR END TOP SECTION RIGHT

901.08.049.000

390 DUKE 15–16

TANK COVER

Use the black fairing pieces as a base for our PowerParts graphics kits or for custom painting. Use the following colors for true KTM style:

- » Orange – RAL 2009
- » Black – RAL 9005
- » White – RAL 9003

Supplied unpainted.







Stock just isn't your thing?
Customize your own jaw-dropping motorcycle with one of our exclusive
PowerParts graphics kits, and stand out from the rest of the competition.

906.08.999.300

390 DUKE 15 – 16

"DUKE" GRAPHICS KIT
Without rim sticker set.



930.08.999.000 **NEW**

390 DUKE 17

"FACTORY" GRAPHICS KIT
Without rim sticker set.



906.08.999.000

390 DUKE 15 – 16

"RACE" GRAPHICS KIT



906.08.999.200

390 DUKE 15 – 16

"FACTORY" GRAPHICS KIT
Without rim sticker set.

902.12.968.144 / 33  **NEW**

390 DUKE

15 – 17

902.12.968.144 / EB  **NEW**

390 DUKE

17

ENGINE GUARDS

Plastic-coated tubular steel bars attached securely to the frame help protect all the important parts on your DUKE.



902.12.968.033 / 04 

390 DUKE

15 – 16

ENGINE GUARDS





901.09.945.000

390 DUKE

15–17

FRONT SLIDE PADS

Helps protect the fork from damage in the event of a slide.



901.02.979.244 / 04 ☒

901.02.979.244 / 28 ☐

901.02.979.244 / 30 ☒

390 DUKE

15–17

ALUMINUM HANDGUARDS

Extremely stable aluminum helps prevent broken levers if the bike should ever fall over. Including fastening materials.



901.10.945.000

390 DUKE

15–16

REAR SLIDE PADS

Helps protect the swingarm in the event of a slide.
Cannot be used in combination with PowerParts silencer.



901.02.979.444 / 04 ☒

901.02.979.444 / 28 ☐

901.02.979.444 / 30 ☒

390 DUKE

15–17

HANDGUARDS SMALL

Includes fastening materials.

901.02.979.344 / 04 ☒

901.02.979.044 / 28 ☐

901.02.979.344 / 30 ☒

390 DUKE

15–17

HANDGUARDS LARGE

Includes fastening materials.



601.12.035.000

390 DUKE 15 – 17

ALARM SYSTEM

Protect your motorcycle with the plug and play PowerParts alarm system.

The benefits at a glance:

- » Plug & play system – wiring harness ready for fitting
- » Reliable, dual-circuit immobilizer
- » Integrated microchip motion sensor
- » Storage compartment under the seat protected additionally with a reed switch
- » Two watertight, anti-scan radio transmitters with rolling code

Note:

- » Mounting kit 901.12.935.100 is required for installation

901.12.916.044

390 DUKE 15 – 16

BRACKET FOR U-LOCK

The practical bracket for fixing the U-lock 600.12.016.000 permanently to your bike. Black powder-coated.



026



930.12.935.044 **NEW**

390 DUKE 17

901.12.935.100

390 DUKE 15 – 16

ALARM SYSTEM MOUNTING KIT

Required for installing alarm system 601.12.035.000; contains all the necessary parts for fixing it securely to the vehicle.



902.12.932.000

390 DUKE 15 – 17

RADIAL ROADLOK

Patented RoadLoK technology provides you with the most effective and elegant option for protecting your KTM from theft.

All the benefits at a glance:

- » Lock body machined from high-grade aluminum
- » Premium quality, with an orange anodized surface finish
- » Bolted directly to the brake caliper
- » High-strength steel pin slides directly into the holes of the brake disc
- » No vehicle movement possible when locked

930.07.947.000 **NEW**

390 DUKE 17

902.07.947.100

390 DUKE 15 – 16

PASSENGER ERGO SEAT

Visually a perfect match for the rider's Ergo seat.



901.08.965.000

390 DUKE 15 – 16

TOURING WINDSCREEN

We recommend the touring windscreen for longer trips. Provides improved protection from the wind and relieves the upper body.

930.07.940.000 **NEW**

390 DUKE 17

902.07.940.100

390 DUKE 15 – 16

ERGO SEAT

Under the premium cover consists technologically advanced components:

- » The 3D structural mesh special foam with built-in tunnel form ensures even pressure distribution and thus increases seating comfort
- » The optimized shape provides more freedom for the legs and better contact with the motorcycle
- » +20 mm seat height
- » Easy assembly



933.12.955.044 **NEW**

390 DUKE 17

LOW CHASSIS KIT

25 mm lower seat height with unchanged ride dynamics.



902.12.955.044

390 DUKE 15 – 16

LOW CHASSIS KIT

25 mm lower seat height with unchanged ride dynamics.

390 DUKE

RC 390

690 DUKE/
ENDURO R

ADVENTURE

1290 SUPER DUKE R / GT

TOOLS



930.00.930.000 **NEW**

390 DUKE

17

KTM MY RIDE

Your smartphone can be synced to the bike via Bluetooth, giving you full control over incoming calls and audio. All the information appears on the bike's display, and you manage this optional feature with the mode switch. Allowing for you to keep your hands where they belong, on the handlebars.

604.12.993.000 **iPHONE 5/5S/5C**

604.12.993.400 **iPHONE 6/7**

604.12.993.500 **iPHONE 6 PLUS/7 PLUS**

604.12.993.600 **GALAXY S5/S6/S6 EDGE/S7**

390 DUKE

15-17

iBRACKET

The iBracket is the perfect solution for attaching your smartphone quickly and securely to your vehicle.

- » Intelligent 3D closure with one-handed operation
- » CNC laser-cut and shaped stainless steel components
- » Tailor-made precision closure contour
- » Plastic corners with UV light-resistant silicone rings
- » Rotatable by 90°

The iBracket can be fitted on all our GPS bracket mounts and it takes only a few minutes. Also suitable for other smartphones.

A current list is available from your authorized KTM dealer.



901.11.942.044

390 DUKE

15 – 16

POWER OUTLET KIT

Power supply for the navigation system or any other use.



930.11.942.044 **NEW**

390 DUKE

15 – 17

USB-POWER OUTLET KIT

Easy, accessible and convenient way to keep your electronic devices charged.

- » Mounts onto handlebar
- » Mounting material included
- » Comes with protection cover
- » Output voltage 5 V



930.02.903.100 **NEW**

390 DUKE

15 – 17

BRACKET FOR GPS/PDA BAG

Only for use on original handlebar mounting.



620.02.903.150

390 DUKE

15 – 17

GPS/PDA BAG LARGE

Keeps documents, maps, navigation and communication equipment (e. g., cellphone) dry and protected against vibration in your field of vision.

- » Suitable for all KTM GPS mounts
- » Size: 170 x 130 x 35 mm



760.12.992.244

390 DUKE

15 – 16

GPS/iBRACKET MOUNT

Easy to mount on any original KTM handlebar clamp using cushioned sockets. Provides the option of attaching a plug and locking the GPS and mount so that they are theft-proof. Suitable for all Garmin / TomTom GPS devices, the KTM GPS/PDA bag and the iBracket.





760.12.925.000

390 DUKE 15 – 17

SIDE BAG SET

Our newly developed and styled side bags provide sufficient storage space for both short weekend tours and long holiday tours.

- » Integrate perfectly into the vehicle design
- » No restrictions for the passenger; sufficient space for their legs
- » Volume per side: 18 liters
- » Includes waterproof inner bags
- » Side bag carrier not included



613.12.978.000

390 DUKE 15 – 17

10-30 L EXPANDABLE REAR BAG

Small items, such as a mobile phone, wallet, keys, etc., are taken care of perfectly. Simple fitting with straps on the passenger seat. The benefit: No difficult-to-fit carriers that spoil the slender rear profile of the bike. With the rear bag attached, the bike can only be used as a single seater. Capacity 10–30 liters.

930.12.912.044 **NEW**

390 DUKE 17

902.12.912.044

390 DUKE 15 – 16

SIDE BAG CARRIER

Sturdy tubular steel construction for simple attachment of side bags 760.12.925.000.



750.12.919.000

390 DUKE 15 – 17

TANK BAG

The ideal companion for every tour:

- » Manufactured from durable nylon, with abrasion-resistant edging made from reflective material
- » Extremely robust, all-round zip fasteners
- » Map pocket, individual compartments
- » Attached with sturdy soft ties
- » Max. volume 18 liters
- » Scope of supply: tank bag, waterproof inner bag, shoulder strap



930.12.919.033 **NEW**

390 DUKE

17

TANK BAG

Catering for all needs:

- » Attachment using QUICK-LOCK EVO System
- » Tank bag mounted and removed in seconds
- » Made from durable 1680D Ballistic Nylon with sturdy EVA base
- » Extremely robust fasteners, with large zip pullers
- » All-round expandable volume increases capacity from 5 to 9 liters
- » Scope of supply: Tank bag, QUICK-LOCK EVO system, rain hood, carrying strap







901.12.927.144

390 DUKE

15 – 16

CARRIER PLATE

This carrier plate is the base for mounting our rear bag 600.12.978.000 or our 46 L 600.12.027.600 or 48 L 620.12.927.000 / 04 / 28 / 30 top cases.



600.12.978.000

390 DUKE

15 – 17

REAR BAG

Bag with Quicklock system for easy mounting. The volume of the bag can be varied between 12 and 18 liters. Carrier plate 901.12.927.144 is also required for mounting.

620.12.927.000 / 04



620.12.927.000 / 28



620.12.927.000 / 30



390 DUKE

15 – 17

48 L TOP CASE

With 48 liters of storage space, this top case easily stows two full-face helmets. It makes use of a practical press-lock system and a combination lock for opening the cover and releasing the latch.

» Dimensions 61 cm x 46 cm x 31 cm

» Volume 48 liters

Additionally, for the assembly the carrier plate is required:

» 901.12.927.144 = 390 DUKE

Options available:

» 620.12.027.055 Backrest for 48 L Top Case







ENHANCE YOUR RIDE

390 DUKE

RC 390

690 DUKE /
ENDURO R

ADVENTURE

1290 SUPER DUKE R / GT

TOOLS



908.05.999.100 **MAP** 

RC 390 15 – 16

AKRAPOVIČ SILENCER "RACE"

This Akrapovič silencer is a match in terms of material and workmanship for the high-end silencers on larger bikes. High-quality looks, sports sound and really simple to fit.

» Stainless steel outer skin and internal parts: optimum mix of weight savings and durability

» Slip-on silencer including pre-silencer

The following parts cannot be used in combination with this exhaust system:

» 610.29.055.244 / 902.29.955.044 Bobbins For Rear Wheel Stand

» 901.10.945.000 Rear Slide Pads

Closed course competition use only.



908.05.979.044 **MAP** 

RC 390 15 – 16

AKRAPOVIČ SILENCER "RACE"

Design similar to 908.05.999.100

» Lower weight

Closed course competition use only.



908.05.984.044

RC 390 15 – 16

BRACKET FOR SLIP-ON SILENCER

Uncompromising race look for your KTM, without any annoying passenger foot pegs:

» Manufactured from high-strength, durable steel

» Extremely light and torsion resistant

» Suitable for silencer 908.05.999.100 / 908.05.979.044

» Fitted to the passenger foot peg mounting points



938.05.984.000 **NEW**

RC 390 17

BRACKET FOR SLIP-ON SILENCER

Uncompromising race look for your KTM, without any annoying passenger foot pegs:

» Manufactured from high-strength, durable steel

» Extremely light and torsion resistant

» Fitted to the passenger foot peg mounting points

NEW

935.05.999.000

RC 390

17

50

AKRAPOVIČ "SLIP-ON LINE"

Unique sound, more style and less weight with a long service life:

- » Carbon outer sleeve
- » Carbon end cap
- » Plug & play assembly
- » Perfect workmanship

The following parts cannot be used in combination with this exhaust system:

- » 610.29.955.244 / 902.29.955.044 Bobbins For Rear Wheel Stand
- » 901.10.945.000 Rear Slide Pads



390 DUKE

RC 390

690 DUKE /
ENDURO R

ADVENTURE

1290 SUPER DUKE R / GT

TOOLS

These high-quality aluminum CNC components have been improved with an abrasion-resistant eloxal coating and make a bold visual statement.

908.13.903.000

RC 390 15 – 17

HANDBRAKE CYLINDER COVER



901.38.906.000 / 04 **NEW**

RC 390 16 – 17

750.38.041.100

RC 390 15

FACTORY OIL FILTER COVER



901.13.930.144

RC 390 15 – 17

REAR BRAKE RESERVOIR CAP

Includes remote reservoir.



772.30.902.144

RC 390 15 – 17

FACTORY IGNITION COVER PLUG



- “Form follows function” – our PowerParts ignition cover and clutch cover protectors not only have a high grade appearance, but they also protect the engine cover from damage.
- » CNC-machined aluminum protector with an orange anodized surface
 - » Base support made from black anodized aluminum
 - » Individually replaceable protectors
 - » Specifically adapted to the shape of the engine cover
 - » Tested in the KTM RC CUP



908.12.966.144 **NEW**

RC 390 16 – 17

908.12.966.044

RC 390 15

IGNITION COVER PROTECTION WITH ALUMINUM SLIDER



908.12.967.144 **NEW**

RC 390 16 – 17

908.12.967.044

RC 390 15

CLUTCH COVER PROTECTION WITH ALUMINUM SLIDER





938.02.984.044

RC 390

15 – 17

“RACE STYLE” BRAKE AND CLUTCH LEVER GUARDS

Derived from MotoGP and our RC CUP bikes:

- » Protects the lever in the event of unintentional ground contact
- » No unintentional lever actuation in the event of contact with another rider/vehicle
- » Simple exchange with the standard handlebar weight
- » Lever guard made from unbreakable plastic
- » Handlebar fitting made from high-grade cast aluminum
- » Plastic guard can be replaced individually



042

905.02.931.044

RC 390

15 – 17

FOLDABLE AND ADJUSTABLE CLUTCH LEVER

“Form follows function” – our PowerParts levers are a visual highlight with technical and ergonomical added value.

- » CNC-machined from high-strength aluminum
- » Tough black anodized surface finish
- » Lever can fold away upwards
- » Adjustable grip width



905.13.950.044

RC 390

15 – 16

FOLDABLE AND ADJUSTABLE BRAKE LEVER





905.07.908.000 **NEW**

RC 390

15 – 16

RACING FUEL CAP

Refuel like the professionals: keyless and extremely quick.

» Machined from high-grade aluminum with an anodized surface finish

» Not lockable

Closed course competition use only.



601.03.923.050 **NEW**

RC 390

15 – 17

SIDE STAND SHOE

With this larger stand foot, your bike always has a secure footing, even on soft ground.



390 DUKE

RC 390

690 DUKE /
ENDURO R

ADVENTURE

1290 SUPER DUKE R / GT

TOOLS

503.10.800.118 / 04

RC 390

15 – 17

520 Z-RING CHAIN

Do you know about the differences and advantages of a Z-ring or X-ring chain, compared to an O-ring chain?

- » Both the Z-ring and X-ring have 4 contact points in contrast to 2 contact points with the O-ring chain
- » This means higher flexibility and better running characteristics for the Z-ring and X-ring chains
- » The spring effect of the Z-ring and X-ring chains provide consistent and permanent lubrication
- » This means a significantly longer service life for Z-ring and X-ring chains
- » The Z-ring and X-ring chains provide a better seal against penetration by water and dirt



905.10.951.042 / 04 T42

905.10.951.043 / 04 T43

905.10.951.044 / 04 T44

905.10.951.045 / 04 T45

905.10.951.046 / 04 T46

RC 390

15 – 17

ALUMINUM REAR SPROCKET

Manufactured from high-strength 7075-T6 aluminum – the world's strongest aluminum.

The advantages of our brake discs:

- » Extremely high quality base materials for more brake power without fading
- » Improved braking in all conditions
- » Floating mounting: no distortion, no brake vibration
- » Precise pressure point throughout the entire temperature range
- » Manufactured from corrosion resistant stainless steel
- » Black anodized inner ring
- » Compatible with Radial RoadLok 902.12.932.000



933.09.960.044 **NEW**

RC 390

17

908.09.960.044

RC 390

15 – 16

WAVE BRAKE DISC 320 MM

- » 320 mm diameter / 5 mm thick
- » Includes brake caliper mounting kit for models with standard 300 mm brake disc



902.09.960.000

RC 390

15 – 16

WAVE BRAKE DISC 300 MM

300 mm diameter / 5 mm thick.

770.13.920.000 **REAR**

780.13.920.000 **FRONT**

RC 390

15 – 17

BRAKE BLEEDER SCREW

Bleeding the brakes or changing the brake fluid is completed in a matter of seconds, even on your own: First replace the original bleeder screw on the brake caliper with this new bleeder screw equipped with a check valve. When changing the brake fluid or bleeding the system, simply release the screw on the check valve by a half turn and pump the brake fluid through the system with the brake lever. The valve prevents air from forcing its way back into the system on releasing the brake lever. Supplied with an anodized dust cap.



390 DUKE

RC 390

690 DUKE /
ENDURO R

ADVENTURE

1290 SUPER DUKE R / GT

TOOLS



905.08.918.044

RC 390

15 – 17

RACE SOLO SEAT

Searching for the perfect solution for track days and for even more racing genes?

The KTM PowerParts race solo seat supplies you with the following benefits:

- » Narrower contour for greater freedom of movement, better contact with the fuel tank for more control, easier hanging off
- » A more direct feel for your KTM and the road surface
- » An absolute must for every ambitious hobby racer
- » Simple fitting to existing mounting points



905.08.915.000 

RC 390

15 – 17

LICENSE PLATE HOLDER SHORT

Shortened version of the licence plate holder. Not for use on public streets and highways.



905.08.920.144

RC 390

15

FIBERGLASS UNDER-ENGINE FAIRING

- » Replaces the original front spoiler
- » Developed for use on the race course
- » Delivered unpainted

Can only be installed if a KTM PowerParts slip-on main silencer and the adjustable footrest unit have been mounted. The side stand also needs to be removed!



908.03.937.144 

RC 390

15 – 17

ADJUSTABLE REAR SET

Racing look and feel, this is what our CNC rear set offers:

- » Fully adjustable rear set: 3 foot peg positions
- » CNC-machined from high-grade aircraft aluminum
- » Premium quality, hardwearing anodized surface finish
- » Inverted shifting scheme possible

Closed course competition use only.



905.08.965.000

RC 390 15 – 17

WINDSCREEN "RACING BUBBLE"

Moto3 racing look for the road.

- » "Bubble" shape as tried and tested over many years in the world of racing
- » Improved wind protection: Less strain on the neck muscles on longer stretches of motorway and long tours
- » Optimized aerodynamics
- » With light cut-out
- » Color: transparent



908.03.901.044

RC 390 15 – 17

HANDLEBAR STOP PROTECTION SET

A must-have for any rider with sporting ambitions!

This KTM PowerPart is a sacrificial part that protects the original handlebar stop against bending or breaking off. Thanks to the simple assembly, it can be replaced quickly following a fall. Which means your KTM is READY TO RACE at all times!

- » Race track tested (RC 390 CUP)
 - » Made from black-dyed and extremely high grade polyamide material
- Use of the part limits the lock angle; the steering lock can no longer be engaged; not recommend for use on public roads for this reason.



905.08.908.044 

RC 390 15 – 17

WINDSCREEN "RACING BUBBLE"

Without light cut-out.

Closed course competition use only.

901.09.945.000

RC 390

15–17

FRONT SLIDE PADS

Helps protect the fork from damage in the event of a slide.



901.10.945.000

RC 390

15–16

REAR SLIDE PADS

Helps protect the swingarm in the event of a slide. Cannot be used in combination with PowerParts silencer 908.05.979.044 / 908.05.999.000



048



905.13.950.033 / 33S

RC 390

15–17

BRAKE LEVER

This forged aluminum lever replaces the original part and offers a premium alternative to the standard lever thanks to the material and anodized coating. Step plate for brake lever is mountable in 3 different positions.

905.34.931.033 / 33S

RC 390

15–17

SHIFT LEVER

This forged aluminum lever replaces the original part and offers a premium alternative to the standard lever thanks to the material and anodized coating. Step plate for shift lever is mountable in 3 different positions.





TOOLS

1290 SUPER DUKE R / GT

ADVENTURE

690 DUKE /
ENDURO R

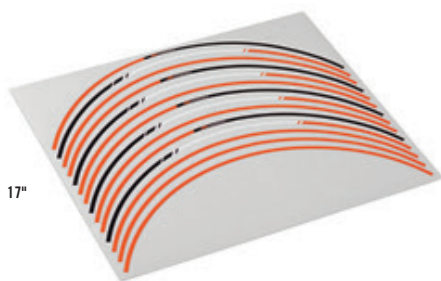
RC 390

390 DUKE

613.09.999.000

RC 390

15-17



RIM STICKER SET

Three-colored design

- » Set for front and rear wheel
- » Pre-cut stickers

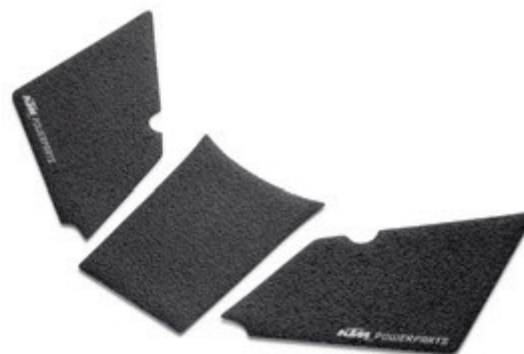
901.07.909.000

RC 390

15-17



TANK CAP STICKER



905.07.914.000 / 30

RC 390

15-17



TANK PROTECTION STICKER

Lasting protection for the paintwork at areas of the fuel tank subject to heavy wear.

- » Made from a high quality, elastic base film
- » Structured surface for better grip
- » No more unsightly scratches or matte areas on the tank



905.07.914.000 / 99

RC 390

15-17

TRANSPARENT

TANK PROTECTION STICKER

050



611.09.099.000

611.09.099.000 / 20

RC 390

15-17



17"



17"

RIM STICKER SET

Pre-cut sticker, suitable for front and rear rim.



Stock just isn't your thing?
Customize your own jaw-dropping motorcycle with one of our exclusive PowerParts graphics kits, and stand out from the rest of the competition.

902.08.999.000

RC 390 15 – 16

"RACE" GRAPHICS KIT



902.08.999.100

RC 390 15 – 16

"NEON" GRAPHICS KIT



390 DUKE

RC 390

690 DUKE /
ENDURO R

ADVENTURE

1290 SUPER DUKE R / GT

TOOLS





902.12.932.000

RC 390 15 – 17

RADIAL ROADLOK

Patented RoadLoK technology provides you with the most effective and elegant option for protecting your KTM from theft.

All the benefits at a glance:

- » Lock body machined from high-grade aluminum
- » Premium quality, with an orange anodized surface finish
- » Bolted directly to the brake caliper
- » High-strength steel pin slides directly into the holes of the brake disc
- » No vehicle movement possible when locked



601.12.035.000

RC 390 15 – 17

ALARM SYSTEM

Protect your motorcycle with the plug and play PowerParts alarm system.

The benefits at a glance:

- » Plug & play system – wiring harness ready for fitting
- » Reliable, dual-circuit immobilizer
- » Integrated microchip motion sensor
- » Storage compartment under the seat protected additionally with a reed switch
- » Two watertight, anti-scan radio transmitters with rolling code

Note:

- » Mounting kit 901.12.935.100 is required for installation

905.12.935.044

RC 390 15 – 17

ALARM SYSTEM MOUNTING KIT

Required for installing alarm system 601.12.035.000; contains all the necessary parts for fixing it securely to the vehicle.



604.12.993.000 iPhone 5/5S/5C

604.12.993.400 iBRACKET iPhone 6/7

604.12.993.500 iBRACKET iPhone 6 PLUS/7 PLUS

604.12.993.600 iBRACKET GALAXY S5/S6/S6 EDGE/S7

RC 390

15 – 17

iBRACKET

The iBracket is the perfect solution for attaching your smartphone quickly and securely to your vehicle.

- » Intelligent 3D closure with one-handed operation
- » CNC laser-cut and shaped stainless steel components
- » Tailor-made precision closure contour
- » Plastic corners with UV light-resistant silicone rings
- » Rotatable by 90°

The iBracket can be fitted on all our GPS bracket mounts and it takes only a few minutes. Also suitable for other smartphones. A current list is available from your authorized KTM dealer.



620.02.903.150

RC 390

15 – 17

GPS/PDA BAG LARGE

Keeps documents, maps, navigation and communication equipment (e. g., cellphone) dry and protected against vibration in your field of vision.

- » Suitable for all KTM GPS mounts
- » Size: 170 x 130 x 35 mm



905.12.992.044

RC 390

15 – 17

GPS/iBRACKET MOUNT

Suitable for all Garmin/TomTom GPS devices, the KTM GPS/PDA bag and the iBracket.



905.07.940.000

RC 390

15–17

ERGO SEAT

Under the premium cover consists technologically advanced components:

- » The 3D structural mesh special foam with built-in tunnel form ensures even pressure distribution and thus increases seating comfort
- » The optimized shape provides more freedom for the legs and better contact with the motorcycle
- » +20 mm seat height
- » Easy assembly



613.12.928.000

RC 390

15–17

24 - 36 L EXPANDABLE REAR BAG

The ideal solution for short trips or the daily ride to work.

- » Volume: 24–36 liters
- » Includes rain cover
- » Strap attachment to the passenger seat or the carrier plate

613.12.978.000

RC 390

15–17

10-30 L EXPANDABLE REAR BAG

Small items, such as a mobile phone, wallet, keys, etc., are taken care of perfectly. Simple fitting with straps on the passenger seat. The benefit: No difficult-to-fit carriers that spoil the slender rear profile of the bike. With the rear bag attached, the bike can only be used as a single seater. Capacity 10–30 liters.



390 DUKE

RC 390

690 DUKE /
ENDURO R

ADVENTURE

1290 SUPER DUKE R / GT

TOOLS

PERSONALIZED PERFORMANCE



TOOLS

1290 SUPER DUKE R / GT

ADVENTURE

690 DUKE/
ENDURO R

RC 390

390 DUKE

Finest carbon for an elegant appearance and maximum protection and weight reduction. The precise workmanship is eye-catching. The average weight reduction for each fairing part is between 30 % and 55 %. Thanks to precise development and manufacturing, these carbon items are a perfect fit with easy installation.

760.08.915.020 / 49

690 DUKE

12 – 17

CARBON REAR COVER



760.11.966.050 / 49

690 DUKE

12 – 17

CARBON IGNITION LOCK COVER



750.30.045.050 / 49

690 DUKE / ENDURO R

CARBON IGNITION COVER PROTECTION



750.30.026.050 / 49

690 DUKE / ENDURO R

CARBON CLUTCH COVER PROTECTION



750.30.960.100 / 49

690 DUKE 08 – 17
SUPERMOTO 07 – 09

CARBON FRONT CHAINGUARD



750.04.960.000 / 49

690 DUKE 08 – 17
SUPERMOTO 07 – 09

CARBON CHAINGUARD



760.08.960.000 / 49

690 DUKE 12 – 17

CARBON RADIATOR PROTECTION LEFT



760.08.961.000 / 49

690 DUKE 12 – 17

CARBON RADIATOR PROTECTION RIGHT

390 DUKE

RC 390

690 DUKE/
ENDURO R

ADVENTURE

1290 SUPER DUKE R / GT

TOOLS



760.05.999.200 50

690 DUKE 16 – 17

AKRAPOVIČ "SLIP-ON LINE"

- » Unique sound
- » Perfect workmanship
- » Premium material mix of titanium and carbon
- » Plug & play assembly



760.05.984.044

690 DUKE 13 – 17

SILENCER BRACKET

Uncompromising race look for your KTM, without any annoying passenger foot pegs:

- » Manufactured from high-strength, durable steel
- » Extremely light and torsion resistant
- » Suitable for standard and the following PowerParts silencers 760.05.999.200 / 760.05.999.000
- » Fitted to the passenger foot peg mounting points



760.05.990.000 / 49

690 DUKE 13 – 17

CARBON EXHAUST GUARD

Suitable for silencer 760.05.999.000 and 760.05.999.200.



765.12.945.000 

690 SMC 08 – 10

TUNING KIT EVO 1 COMPLETE

The tuning kit calibrated specifically for the bike generates more torque and a perceptible increase in performance. Including open air filter box cover, mounting kit and complete Akrapović system.

Closed course competition use only.



765.05.990.050 / 49

690 ENDURO R 08 – 17
690 SMC 08 – 10

CENTER CARBON EXHAUST GUARD

For mounting on the original exhaust, but also for use on the Akrapovic header 765.05.907.100 and silencer 765.05.099.000.



765.05.990.060 / 49

690 ENDURO R 08 – 17
690 SMC 08 – 10

CARBON EXHAUST GUARD

Suitable for silencer 760.05.999.000 and 760.05.999.200.



765.05.991.000 / 49

690 ENDURO R 08 – 17
690 SMC 08 – 10

FRONT CARBON EXHAUST GUARD

Only for use in combination with Akrapović header 765.05.907.100. Can also be fitted to original header on the 690 SMC.

390 DUKE

RC 390

690 DUKE/
ENDURO R

ADVENTURE

1290 SUPER DUKE R / GT

TOOLS





These high-quality aluminum CNC components feature a superior abrasion-resistant eloxal coating and make a bold visual statement.



SXS.08.300.040

690 DUKE	08 – 11
690 ENDURO R	08 – 17
690 SMC	08 – 10

FACTORY KNOB ADJUSTER SET



606.13.903.000

690 DUKE	12 – 17
690 ENDURO R	14 – 17

HANDBRAKE CYCLINDER COVER



604.02.933.144

690 DUKE	14 – 17
690 ENDURO R	13 – 17

HYDRAULIC CLUTCH COVER



613.13.909.000

690 DUKE	08 – 11
----------	---------

BRAKE FLUID RESERVOIR COVER



794.30.920.044

690 DUKE / ENDURO R / SMC

FACTORY OIL FILL PLUG



772.30.902.144

690 DUKE / ENDURO R / SMC

FACTORY IGNITION COVER PLUG



750.38.041.100

690 DUKE / ENDURO R / SMC

FACTORY OIL FILTER COVER



613.13.962.000

690 DUKE

12 - 17

REAR BRAKE RESERVOIR CAP

390 DUKE

RC 390

690 DUKE/
ENDURO R

ADVENTURE

1290 SUPER DUKE R / GT

TOOLS



	690 DUKE 12 – 17	690 ENDURO R 12 – 17
AIRBOX COVER	760.06.902.000/99 TRANSPARENT	
HEADLIGHT MASK	760.08.001.000/28 <input type="checkbox"/> 760.08.001.000/30 <input type="checkbox"/> 760.08.001.000/EB <input type="checkbox"/>	765.08.001.000/04 <input type="checkbox"/> 765.08.001.000/28 <input type="checkbox"/> 765.08.001.000/30 <input type="checkbox"/>
FRONT FENDER	760.08.010.044/28 <input type="checkbox"/> 760.08.010.044/30 <input type="checkbox"/>	765.08.010.100/04 <input type="checkbox"/> 765.08.010.100/28 <input type="checkbox"/>
TANK FAIRING LEFT	760.08.050.000/28 <input type="checkbox"/> 760.08.050.000/30 <input type="checkbox"/> 760.08.050.000/EB <input type="checkbox"/>	
TANK FAIRING RIGHT	760.08.051.000/28 <input type="checkbox"/> 760.08.051.000/30 <input type="checkbox"/> 760.08.051.000/EB <input type="checkbox"/>	
SPOILER LEFT		765.08.150.000/04 <input type="checkbox"/> 765.08.150.000/30 <input type="checkbox"/>
SPOILER RIGHT		765.08.151.000/04 <input type="checkbox"/> 765.08.151.000/30 <input type="checkbox"/>
SIDE FAIRING LEFT		765.08.141.000/04 <input type="checkbox"/> 765.08.141.000/30 <input type="checkbox"/>
SIDE FAIRING RIGHT		765.08.142.000/04 <input type="checkbox"/> 765.08.142.000/30 <input type="checkbox"/>
REAR FENDER		765.08.013.000/04 <input type="checkbox"/> 765.08.013.000/28 <input type="checkbox"/> 765.08.013.000/30 <input type="checkbox"/>

ORIGINAL TRIM PARTS WITHOUT SERIAL DECORATIONS AS THE OPTIMUM BASIS FOR THE GRAPHICS KIT.

Stock just isn't your thing?
Customize your own jaw-dropping motorcycle with one of our exclusive
PowerParts graphics kits, and stand out from the rest of the competition.
» Without rim sticker set

760.08.999.100

690 DUKE 12 – 15

760.08.999.300

690 DUKE 16 – 17

“STEALTH” GRAPHICS KIT



760.08.999.200

690 DUKE 12 – 17

“STRUCTURE” GRAPHICS KIT



765.09.099.000 21"/18"

690 ENDURO R 08 - 17

RIM STICKER SET

Black/white, pre-cut sticker,
suitable for front and rear rim.



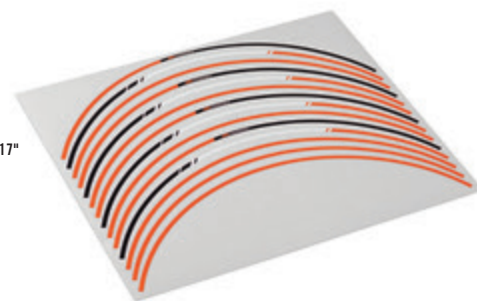
613.09.999.000 17"

690 DUKE / SMC

RIM STICKER SET

New, three-colored design

- » Set for front and rear wheel
- » Pre-cut stickers



611.09.099.000

611.09.099.000 / 20

690 DUKE / SMC

RIM STICKER SET

Pre-cut sticker, suitable for front and rear rim.



17"

20"



780.09.099.000 21"/18"

690 ENDURO R 08 - 17

RIM STICKER SET

Orange, pre-cut sticker,
suitable for front and rear rim.



760.09.999.000 17"

690 DUKE / SMC

RIM STICKER SET





760.07.911.000

690 DUKE

13 – 15

TANK PAD



760.07.911.100

690 DUKE

16 – 17

TANK PAD

760.08.998.000

690 DUKE

13 – 17

“CUP-KIT” TANK PROTECTION STICKER

Lasting protection for the paintwork at areas of the fuel tank subject to heavy wear.

- » Made from a high quality, elastic base film
- » Structured surface for better grip
- » No more unsightly scratches or matte areas on the tank



390 DUKE

RC 390

690 DUKE/
ENDURO R

ADVENTURE

1290 SUPER DUKE R / GT

TOOLS





548.02.001.300 / 04

690 ENDURO R 08 – 17
690 SMC 08 – 10

HANDLEBAR

Do you know that KTM handlebars must withstand very elaborate and specially developed test cycles before they come to market? The facts:

- » All KTM handlebars are made from EN AW 7010 T6 aluminum
- » 28.5 mm diameter in the clamping area
- » 22.15 mm diameter in the lever area
- » Position markings for simple setting



601.12.092.070

690 DUKE / ENDURO R / SMC

HANDLEBAR CROSS BRACE

Universally applicable option for mounting the GPS bracket or roadbook.



548.02.005.000

690 DUKE / ENDURO R / SMC

BAR ENDS

Protects grip ends from grazing in the event of a fall.



765.12.905.000

690 ENDURO R 08 – 17
690 SMC 08 – 10

STEERING DAMPER KIT

This fully adjustable, very lightweight KTM steering damper provides a clear improvement in stability and handling on the toughest terrain.

789.01.939.044 32 MM

789.01.939.144 37 MM

789.01.939.244 42 MM

789.01.939.344 47 MM

789.01.939.444 52 MM

690 ENDURO R 08 – 17
690 SMC 08 – 10



HANDLEBAR MOUNTING

Available in five different heights. Included in the kit are 2x handlebar support lower parts and 2x fastening bolts. The upper parts and bolts required for clamping the handlebar are taken from the original handlebar support.



SXS.07.125.200

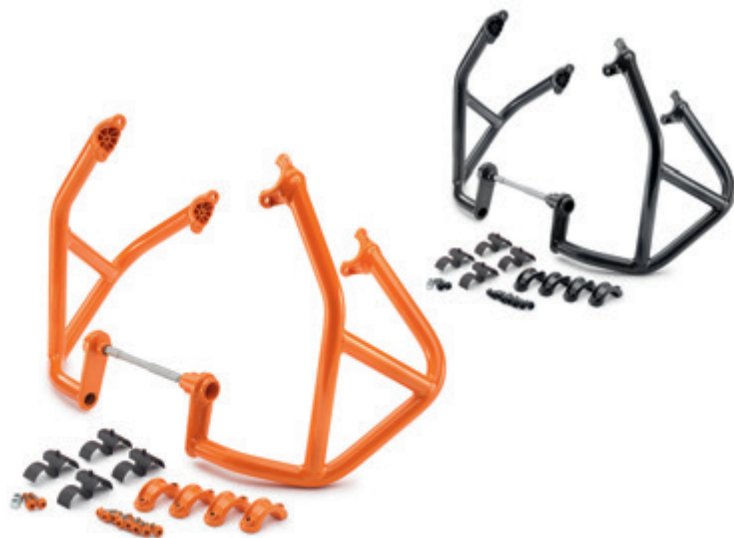
690 ENDURO R 08 – 17
690 SMC 08 – 10

PHDS PROGRESSIVE HANDLEBAR DAMPING SYSTEM

The CNC-machined handlebar mounting with cushioning rubber inserts relieves wrist and shoulder joints.

Further benefits of the PHDS:

- » Cushioning of heavy hits
- » Absorption of vibration from chassis and engine
- » Additional handlebar damping in horizontal direction
- » Optimum steering precision
- » Handlebar height adjustable to 2 positions
- » Further damping elements available in three degrees of hardness
Green (Soft) SXS.05.125.203, Yellow (Standard) SXS.05.125.204 and
Red (Hard) SXS.05.125.205. PHDS bar pad also available: SXS.07.250.800.



760.12.968.144 / 04 ■

690 DUKE 13 – 15

760.12.968.144 / 33 ■

690 DUKE 13 – 17

760.12.968.144 / EB ■

690 DUKE 16 – 17

ENGINE GUARDS

Plastic-coated tubular steel bars attached securely to the frame help protect the fuel tank in the event of minor crashes and falls.



760.09.945.100 **NEW**

690 DUKE 13 – 17

FRONT SLIDE PAD KIT

Protects the forks against damage in the event of a slide, and enables the use of the motorcycle front wheel lifting gear; small 611.29.965.000.



756.09.945.000

690 SUPERMOTO 07 – 09

690 SMC 08 – 10

690 DUKE 08 – 17

FRONT SLIDE PADS

Helps protect the fork from damage in the event of a slide.



756.10.945.000

690 SUPERMOTO 07 – 09

690 SMC 08 – 10

690 DUKE 08 – 17

REAR SLIDE PADS

Helps protect the swingarm in the event of a slide.

780.01.094.200 / 04 

780.01.094.200 / 28 

780.01.094.200 / 30 

690 ENDURO R

08 – 17

FORK PROTECTION SET



074

765.02.979.000 / 04 

765.02.979.000 / 28 

765.02.979.000 / 30 

690 DUKE

13 – 17

690 ENDURO R

08 – 17

690 SMC

08 – 10

ALUMINUM HANDGUARDS

This handguard set has been specially developed for your motorcycle and is an essential accessory for extreme offroad and Supermoto sessions. The wide, spacious design ensures excellent mobility and maximum protection against impact, roost, branches, etc.





590.03.990.250

FOR 765.03.090.100

690 ENDURO R 08-17
690 SMC 08-10

SKID PLATE FOAM

When positioned between engine and skid plate, less dirt can accumulate, hence allowing better cooling of the engine.



765.07.008.060

690 ENDURO R 08-17
690 SMC 08-10

FOAM RUBBER FOR TANK CAP

Helps prevent dust and dirt from falling into the tank when the tank cap is opened.



765.03.090.100

690 ENDURO R 08-17
690 SMC 08-10

SKID PLATE

390 DUKE

RC 390

690 DUKE/
ENDURO R

ADVENTURE

1290 SUPER DUKE R / GT

TOOLS



780.01.095.000

690 DUKE / R	08 – 11
690 ENDURO R	08 – 17
690 SUPERMOTO / R	07 – 09
690 SMC	08 – 10

NEOPRENE FORK COVER

The perfect protection for your fork; for use with the closed fork protector.



601.03.923.050

690 DUKE	13 – 17
690 ENDURO R	08 – 17
690 SMC	08 – 10

SIDE STAND SHOE

With this larger foot for your side stand, your bike always has a secure footing, even on soft ground.



765.35.940.000

690 ENDURO R	08 – 17
690 SMC	08 – 10

RADIATOR PROTECTION SET

Perfect protection for the radiator; easily fitted.



548.03.047.000

690 ENDURO / SMC

FOOT PEG SLIDERS

This glass-fiber reinforced slider takes all the damage to keep your foot pegs pristine. Suitable for the following foot pegs:

- » 590.03.041.250 / 590.03.040.250
- » 780.03.041.050 / 780.03.040.050



613.03.946.044

690 DUKE / R 08 – 17
690 SUPERMOTO / R 07 – 09

PASSENGER FOOT PEG SLIDERS

Protects the passenger foot pegs from damage.
For mounting on the passenger foot pegs.



780.03.940.244

690 DUKE / ENDURO / SMC

PIVOT PEGZ

Ingenious: Foot pegs that move with you when you shift your weight. Developed and tested by KTM professional riders. Ideal for Enduro and Supermoto.

The benefits:

- » Spring-mounted, 20° rotational movement possible towards front and rear
- » More control and grip in the corners thanks to the manoeuvrability
- » Large tread surface area of 60 mm
- » Simpler and quicker weight shifting
- » Simpler gear changing and braking
- » Permanent contact between boot and foot pegs: extends the service life of your boots!



760.07.940.144 / 28 ☐

760.07.940.044 / 30 ☐

690 DUKE

13–15

PASSENGER SEAT COVER

Race look in a matter of seconds; no tools required.



760.07.955.044 / 30

690 DUKE

16–17

PASSENGER SEAT COVER

Race look in a matter of seconds; no tools required.

078



760.08.920.044 / 33 ☐ **NEW**

690 DUKE

13–17

760.08.920.044 ☐

690 DUKE

13–17



UNDER-ENGINE FAIRING

This aluminum under-engine fairing is not only a visual highlight for the 690 DUKE, but also excellent protection for the pre-silencer. Can be fitted with the original pre-silencer.

770.13.920.000

690 SM	07-09	REAR
690 SMC	08-10	REAR
690 DUKE	08-11	REAR
690 ENDURO R	08-17	FRONT & REAR

BRAKE BLEEDER SCREW

Bleeding the brakes or changing the brake fluid is completed in a matter of seconds, even on your own: First replace the original bleeder screw on the brake caliper with this new bleeder screw equipped with a check valve. When changing the brake fluid or bleeding the system, simply release the screw on the check valve by a half turn and pump the brake fluid through the system with the brake lever. The valve prevents air from forcing its way back into the system on releasing the brake lever. Supplied with an anodized dust cap.



770.13.920.100

FRONT

690 SM	07-09
690 SMC	08-10
690 DUKE	08-17

BANJO BOLT WITH BLEEDER FUNCTION

760.08.915.144



690 DUKE 12-17

LICENSE PLATE HOLDER SHORT

Shortened version of the licence plate holder for use at the race track.

Not in combination with:

- » Carrier Plate 760.12.927.044
 - » Side Bag Carrier 760.12.912.144
 - » Side bags including carrier 760.12.930.000
- Closed course competition use only.



760.10.960.000

690 DUKE

13 – 17

WAVE BRAKE DISC 240 MM

WAVE brake disc for the rear wheel – a perfect match visually and technically for the front wave brake disc.

- » Rustless, high-performance brake steel
- » No fading, consistent braking performance at the highest level
- » Perfect application



760.09.960.000

690 DUKE

13 – 17

WAVE BRAKE DISC 320 MM

Whether it be punishing missions on the racetrack or touring with passenger and luggage, our WAVE brake discs supply the same high level of deceleration in every situation with outstanding controllability.

- » Brake disc outer ring: rustless, high-performance brake steel
- » Anodized aluminum inner ring
- » Floating mounting: no distortion, no brake vibration
- » No fading, consistent braking performance at the highest level
- » More braking power (+25 % braking power) thanks to materials from the world of racing
- » Less hand force for the same braking power





TOOLS

1290 SUPER DUKE R / GT

ADVENTURE

690 DUKE/
ENDURO R

RC 390

390 DUKE

584.10.051.038 / 04 T38
 584.10.051.040 / 04 T40
 584.10.051.042 / 04 T42
 584.10.051.044 / 04 T44
 584.10.051.046 / 04 T46
 584.10.051.048 / 04 T48
 584.10.051.049 / 04 T49
 584.10.051.050 / 04 T50
 584.10.051.051 / 04 T51
 584.10.051.052 / 04 T52

690 DUKE / ENDURO R / SMC

2K REAR SPROCKET

If you're looking for the ultimate in quality and performance, this sprocket is the one for you!

- » High-strength steel teeth
- » Aluminum inner ring
- » Joined together permanently with high-strength rivets
- » At least three times longer service life than other aluminum rear sprockets
- » Only half as heavy as conventional steel rear sprockets

Another benefit: longer service life for the entire drivetrain



583.10.051.038 T38
 583.10.151.040 T40
 583.10.051.042 T42
 583.10.151.044 T44
 583.10.151.045 T45
 583.10.151.048 T48
 583.10.151.049 T49
 583.10.151.050 T50
 583.10.151.051 T51
 583.10.151.052 T52

690 DUKE / ENDURO R / SMC

REAR SPROCKET

Manufactured from high-strength 7075-T6 aluminum – the world's strongest aluminum.



503.10.800.118 / 04

690 DUKE / ENDURO R / SMC

520 Z-RING CHAIN



582.10.951.042 T42
 582.10.951.045 T45
 582.10.951.048 T48
 582.10.951.050 T50
 582.10.951.052 T52

690 DUKE / ENDURO R / SMC

STEEL REAR SPROCKET

For longer trips, we recommend this extremely low-wear, QSTE 460 steel sprocket.



590.10.051.045 / 04 T45

590.10.051.048 / 04 T48

590.10.051.049 / 04 T49

590.10.051.050 / 04 T50

590.10.051.052 / 04 T52

690 DUKE / ENDURO R / SMC

ALUMINUM REAR SPROCKET

The orange rear sprocket is already a true classic that has established itself with great features and benefits:

- » Manufactured from high-strength 7075-T6 aluminum, the strongest aluminum in the world
- » Free from vibration – therefore the highest power transmission efficiency
- » No small stones or dirt particles can become stuck under the chain thanks to angled recesses between the teeth
- » Orange anodized with a permanent, organic and environmentally friendly pigment



690.10.965.120

690 DUKE / ENDURO R / SMC

520 CHAIN

High-strength, free-running chain that reduces resistance.

390 DUKE

RC 390

690 DUKE/
ENDURO R

ADVENTURE

1290 SUPER DUKE R / GT

TOOLS

613.13.932.244

690 DUKE	08 – 17
690 ENDURO R	08 – 17
690 SMC	08 – 10
690 SUPERMOTO / R	07 – 09

“RACE STYLE” BRAKE LEVER GUARD

Derived from MotoGP and our RC CUP bikes:

- » Protects the lever in the event of unintentional ground contact
- » Simple exchange of the standard handlebar weight
- » Lever guard made from unbreakable plastic
- » Handlebar fitting made from high-grade cast aluminum
- » Plastic guard is replaceable individually



613.13.931.244

690 DUKE	08 – 17
690 ENDURO R	08 – 17
690 SMC	08 – 10
690 SUPERMOTO / R	07 – 09

“RACE STYLE” CLUTCH LEVER GUARD



760.03.937.044 / 33

690 DUKE

13–17



REAR SET "DUKE R"

Are you seeking complete control of your bike and a sportier, more ergonomic sitting position? The DUKE R rear set provides you with this as well as racing looks.

Change compared with the standard foot peg position:

- » 60–70 mm towards the rear
- » 30–50 mm higher



760.01.999.144 / 04

690 DUKE

13–17

"RACE" TRIPLE CLAMP

Orange anodized, can only be fitted with original handlebar support.

Offset: 32 mm

750.06.115.100



690 SUPERMOTO

07–09

K&N AIR FILTER

Allows the engine to "breathe" optimally for maximum performance on a closed course. Ideal in combination with an Akrapovič silencer. Closed course competition use only.



765.06.115.000



690 SMC

08–10

FOAM AIR FILTER

Washable alternative to the original air filter. Closed course competition use only.



390 DUKE

RC 390

690 DUKE/
ENDURO R

ADVENTURE

1290 SUPER DUKE R / GT

TOOLS

+OPTIONAL **TRACK** **PACK**

RIDE MODES		ENGINE		ABS MODE
				
SPORT	RAIN	TC TRACTION CONTROL	MSR MOTOR SLIP REGULATION	SUPERMOTO

760.00.970.000 

690 DUKE 16 – 17

TRACK PACK

The following functions are available once this has been activated by your authorized KTM dealer:

- » "Sport" mode
- » "Rain" mode
- » Traction control (TC)
 - Helps prevent rear wheel spin under heavy acceleration and the front wheel from lifting
- » Motor Slip Regulation (MSR)
 - Targeted intervention by the engine management system prevents rear wheel over-braking due to engine braking
- » Supermoto ABS
 - Single channel ABS mode: The rear wheel may lock; ABS controls the front wheel only
 - Deactivation of Motor Slip Regulation (MSR)
 - The following additional part is required to have this function permanently available for competition use: 603.12.953.000 dongle

Closed course competition use only.



603.12.953.000

690 ENDURO R 14 – 17

DONGLE

The ABS dongle enables additional features in the ABS control unit.

- » ABS mode 1:
 - The ABS function is active on the front wheel only (single channel ABS). The rear wheel can lock at any time without engaging the ABS braking.
- » ABS mode 2:
 - The ABS function is switched off and remains deactivated, even after the ignition has been switched back on. The front and rear wheels can lock at any time without engaging the ABS braking.

ABS mode 1 is automatically activated when the dongle is inserted.

Your authorized KTM dealer will have the detailed functional overview for your machine ready for you.

613.11.946.044 

690 SMC 08 – 10
690 DUKE 13 – 15

SIDE STAND REMOVAL KIT

For easy side stand removal:

- » Contains all parts required for removing the side stand
- » Adapter cable for the side stand switch prevents malfunctions in the vehicle electronics

Closed course competition use only.



690.11.971.000

690 DUKE

13 – 15



TRIPMASTER SWITCH

This switch allows use of all the speedo functions without having to remove your hands from the handlebar.



601.12.035.000

690 DUKE

13 – 17

ALARM SYSTEM

Protect your motorcycle with the plug and play KTM PowerParts alarm system. The benefits at a glance:

- » Plug & play system – wiring harness ready for fitting
- » Reliable, dual-circuit immobilizer
- » Integrated microchip motion sensor
- » Storage compartment under seat protected additionally with a reed switch
- » Two watertight, anti-scan radio transmitters with rolling code

Note:

- » Mounting kit 905.12.935.044 is required for installation



760.12.935.144 **NEW**

690 DUKE

16 – 17

ALARM SYSTEM MOUNTING KIT

Required for installing alarm system 601.12.035.000; contains all the necessary parts for attaching it securely to the vehicle.



760.12.935.044

690 DUKE

13 – 15

ALARM SYSTEM MOUNTING KIT

Required for installing alarm system 601.12.035.000; contains all the necessary parts for attaching it securely to the vehicle.

760.12.955.033

690 DUKE

13 – 17

LOW CHASSIS KIT

25 mm lower seat height with unchanged ride dynamics.



765.07.940.000

690 ENDURO R

08 – 17

690 SMC

08 – 10

ERGO SEAT

The 2-component foam core ensures long-lasting comfort.
Especially on long trips, the difference is clearly noticeable.





760.07.940.000

690 DUKE 13 – 15

ERGO SEAT

Under the premium cover consists technologically advanced components:

- » The 3D structural mesh special foam with built-in tunnel form ensures even pressure distribution and thus increases seating comfort
- » The optimized shape provides more freedom for the legs and better contact with the motorcycle
- » +20 mm seat height
- » Easy assembly



760.07.947.100

690 DUKE 16 – 17

PASSENGER ERGO SEAT

Visually a perfect match for the rider's Ergo seat.



760.07.947.000

690 DUKE 13 – 15

PASSENGER ERGO SEAT

Visually a perfect match for the rider's Ergo seat.



760.07.940.200

690 DUKE 16 – 17

ERGO SEAT

Under the premium cover consists technologically advanced components:

- » The 3D structural mesh special foam with built-in tunnel form ensures even pressure distribution and thus increases seating comfort
- » The optimized shape provides more freedom for the legs and better contact with the motorcycle
- » Easy assembly

610.12.932.000

690 DUKE

08-17

690 SMC

08-10

RADIAL ROADLOK

Patented RoadLoK technology provides you with the most effective and elegant option for protecting your KTM from theft.

All the benefits at a glance:

- » Lock body machined from high-grade aluminum
- » Premium quality, orange anodized surface finish
- » Bolted directly to the brake caliper
- » High-strength steel pin slides directly into the holes of the brake disc
- » No vehicle movement possible when locked



090



756.12.978.100

690 DUKE / ENDURO R / SMC

UNIVERSAL REAR BAG / BACKPACK

The ideal solution for short trips or the daily ride to work:

- » Volume: 16 – 32 liters
- » Includes rain cover
- » Attached with straps to the carrier plate
- » Built-in high quality shoulder straps to carry on your back
- » Storage compartment for U-lock 600.12.016.000

781.12.978.100

690 DUKE / ENDURO R / SMC

5 L UNIVERSAL REAR BAG

Storage space for everything that needs to be readily to hand on tour, such as tools, drinks, mobile phone, etc.

- » Made from robust, waterproof material
- » Welded seams
- » Volume: 5 liters

Fitting with supplied straps:

- » On the vehicle rear end
- » At the lashing eyes on the case lid



750.12.919.000

690 DUKE / ENDURO R / SMC

TANK BAG

The ideal companion for every tour:

- » Manufactured from durable nylon, with abrasion-resistant edging made from reflective material
- » Extremely robust, all-round zip fasteners
- » Map pocket, individual compartments
- » Attached with sturdy soft ties
- » Max. volume 18 liters
- » Scope of supply: tank bag, waterproof inner bag, shoulder strap

601.12.924.100

690 ENDURO R 08 – 17
690 SMC 08 – 10

38 L ALUMINUM CASE

Watertight and durable single case made from 1.5 mm thick aluminum, without welded edge seams. Rounded corners and edges, with exceptionally robust plastic protectors on the corners. Can be used on the right and left side. Suitable for the 765.12.920.000 case carrier system (not included in delivery). Two lockable latch mechanisms, which provide a hinge function for opening the case, lashing eyes on the lid, as well as fittings for additional latches.

» Luggage volume: approx. 38 liters; 44 x 24 x 39 cm

Options available:

» 601.12.924.050 lock kit for 2x cases and 1x top case

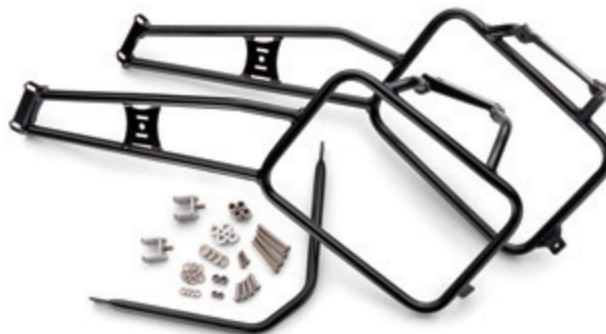


765.12.920.000

690 ENDURO R 08 – 17
690 SMC 08 – 10

CASE CARRIER

Torsionally rigid, tubular steel rack for mounting the aluminum cases. Simple fitting, without modifying the passenger foot pegs. Optimum load distribution via existing mounting points on the chassis.



760.12.930.000

690 DUKE

13 – 17

SIDE BAGS INCLUDING CARRIER

These sidebags with robust steel tube construction have been designed to follow the form and color of the bike's design. With a capacity of 13 liters on each side and water-tight inner compartments, they provide a lightweight and easy-to-install transport solution for your next tour. This set cannot be used in combination with the short license plate holder (760.08.915.144).



390 DUKE

RC 390

690 DUKE/
ENDURO R

ADVENTURE

1290 SUPER DUKE R / GT

TOOLS

760.12.927.044

690 DUKE

13 – 17

CARRIER PLATE

For top cases 620.12.927.000 / 04 / 28 / 30 / EB and rear bag 600.12.978.000.

Not in combination with:

- » 760.08.915.144 Short license plate holder



094

620.12.927.000 / 04

690 DUKE

08 – 15

620.12.927.000 / 28

690 DUKE

08 – 17

620.12.927.000 / 30

690 DUKE

08 – 17

620.12.927.000 / EB

690 DUKE

16 – 17

48 L TOP CASE

With 48 liters of storage space, this top case easily stows two full-face helmets. It makes use of a practical press-lock system and a combination lock for opening the cover and releasing the latch.

- » Dimensions 61 cm x 46 cm x 31 cm
- » Volume 48 liters

Additionally, for the assembly the carrier plate is required:

- » 760.12.927.044 = 690 DUKE

Options available:

- » 620.12.027.055 Backrest for 48 L Top Case





600.12.978.000

690 DUKE / ENDURO R / SMC

REAR BAG

Bag with Quicklock system for easy mounting. The volume of the bag can be varied between 12 and 18 liters. Carrier plate 765.12.927.000 (ENDURO, SMC) or 760.12.927.044 (DUKE 12–16) is also required for mounting.



765.12.927.000

690 ENDURO R 08–17
690 SMC 08–10

BAG CARRIER

For rear bag 600.12.978.000. Case carrier system 765.12.920.000 is required for mounting with the passenger grab handles supplied in stock version.



601.12.078.000

690 DUKE / ENDURO R / SMC

38 L WATERPROOF LUGGAGE BAG

Completely waterproof and flexible in size! The ideal solution for all those wanting to go on long or short tours from time to time.



603.12.978.044

690 DUKE 13–17

EXTENDED CARRIER PLATE

Extra-large carrier plate, e. g. for transporting luggage rolls:

- » Ideal for transporting luggage bag 601.12.078.000
- » Not suitable for mounting a top case
- » Max. load 11 lbs
- » Carrier plate 760.12.927.044 is required for mounting

390 DUKE

RC 390

690 DUKE/
ENDURO R

ADVENTURE

1290 SUPER DUKE R / GT

TOOLS

- 604.12.993.000** iPhone 5/5S/5C
604.12.993.400 iPhone 6/7
604.12.993.500 iPhone 6 PLUS/7 PLUS
604.12.993.600 GALAXY S5/S6/S6 EDGE/S7
 690 DUKE/ENDURO R/SMC

iBRACKET

The iBracket is the perfect solution for attaching your smartphone quickly and securely to your vehicle.

- » Intelligent 3D closure with one-handed operation
- » CNC laser-cut and shaped stainless steel components
- » Tailor-made precision closure contour
- » Plastic corners with UV light-resistant silicone rings
- » Rotatable by 90°

The iBracket can be fitted on all GPS bracket mounts and it takes only a few minutes.

Also suitable for other smartphones. A current list is available from your authorized KTM dealer.



- 760.12.992.244**
 690 DUKE/ENDURO R/SMC

MOUNTING FOR GPS BRACKET

Easy to mount on any original KTM handlebar clamp using cushioned sockets. Provides the option of attaching a plug and locking the GPS and holder so that they are theft-proof. Suitable for all Garmin/TomTom GPS devices, the KTM GPS/PDA bag and the iBracket.



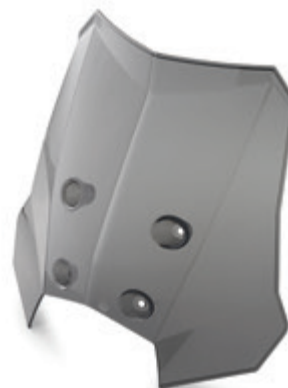


760.08.965.044

690 DUKE 13 – 17

TOURING WINDSCREEN

We recommend the touring windscreen for longer trips. Provides improved protection from the wind and relieves the upper body.



765.08.065.000

690 ENDURO R 08 – 17
690 SMC 08 – 10

TOURING WINDSCREEN

We recommend the touring windscreen for longer trips. Provides improved protection from the wind and relieves the upper body.

620.02.903.150

690 DUKE / ENDURO R / SMC

GPS / PDA BAG LARGE

Keeps documents, maps, navigation and communication equipment (e. g., cellphone) dry and protected against vibration in your field of vision.

» Suitable for all KTM GPS bracket mounts

» Size: 170 x 130 x 35 mm







BUILD UP THE ADVENTURE

TOOLS

1290 SUPER DUKE R / GT

ADVENTURE

690 DUKE/
ENDURO R

RC 390

390 DUKE

Unique sound, more style and less weight with a long service life:

- » Very light, yet robust construction made from high-grade titanium (outer skin) and stainless steel (internal parts)
- » Weight saving approx. 6.6 lbs
- » Carbon exhaust guard included
- » Plug & play fitment



607.05.979.000 NEW 50

607.05.979.000 / 33 NEW 50

1090 ADVENTURE R 17
1290 SUPER ADVENTURE R / T 17

AKRAPOVIČ "SLIP-ON LINE"



603.05.979.200 50

1190 ADVENTURE / R 13 – 16
1290 SUPER ADVENTURE 15 – 16

AKRAPOVIČ "SLIP-ON LINE"

613.30.986.044

1090 ADVENTURE R	17
1190 ADVENTURE / R	13 – 16
1290 SUPER ADVENTURE	15 – 16
1290 SUPER ADVENTURE R / T	17



CARBON CLUTCH COVER PROTECTION

Factory look with maximum protection for the clutch cover:

- » Carbon-Kevlar design
- » 5 mm thick in concentrated areas to provide maximum protection

693.30.985.044

1090 ADVENTURE R	17
1190 ADVENTURE / R	13 – 16
1290 SUPER ADVENTURE	15 – 16
1290 SUPER ADVENTURE R / T	17



CARBON IGNITION COVER PROTECTION

Factory look with maximum protection for the ignition cover:

- » Carbon-Kevlar design
- » 5 mm thick in concentrated areas to provide maximum protection

603.03.965.044

1090 ADVENTURE R	17
1190 ADVENTURE / R	13 – 16
1290 SUPER ADVENTURE	15 – 16
1290 SUPER ADVENTURE R / T	17



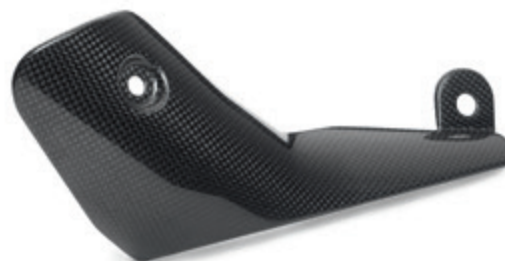
CARBON SIDE FAIRING SET

Puts your KTM perfectly in the limelight with premium quality carbon.

- » Made from the highest quality carbon fiber
- » Visual highlight that conceals the shock absorber
- » Satin surface finish

603.05.913.044

1090 ADVENTURE R	17
1190 ADVENTURE / R	13 – 16
1290 SUPER ADVENTURE	15 – 16
1290 SUPER ADVENTURE R / T	17



CARBON CATALYTIC CONVERTER HEAT PROTECTION

Puts your KTM perfectly in the limelight with premium quality carbon.

- » Made from highest quality carbon fiber
- » Helps protect you and your clothing from the heat of the catalytic converter
- » High-gloss finish, suitable for Akrapovič slip-on silencer 603.05.979.200 / 603.05.979.200/33

These high-quality aluminum CNC components feature a superior abrasion-resistant eloxal coating and makes for a bold visual statement.

603.04.937.100

1090 ADVENTURE R	17
1190 ADVENTURE / R	13-16
1290 SUPER ADVENTURE	15-16
1290 SUPER ADVENTURE R / T	17

SWINGARM BOLT COVER SET



613.13.962.000

1090 ADVENTURE R	17
1190 ADVENTURE / R	13-16
1290 SUPER ADVENTURE	15-16
1290 SUPER ADVENTURE R / T	17

REAR BRAKE RESERVOIR CAP



606.13.903.000 **NEW**

1090 ADVENTURE R	17
------------------	----

HANDBRAKE CYLINDER COVER



750.38.041.100

1090 ADVENTURE R	17
1190 ADVENTURE / R	13-16
1290 SUPER ADVENTURE	15-16
1290 SUPER ADVENTURE R / T	17

FACTORY OIL FILTER COVER



604.02.933.144

1090 ADVENTURE R	17
1190 ADVENTURE / R	13-16
1290 SUPER ADVENTURE	15-16
1290 SUPER ADVENTURE R / T	17

HYDRAULIC CLUTCH COVER



613.13.909.000

1190 ADVENTURE / R	13 – 16
1290 SUPER ADVENTURE	15 – 16
1290 SUPER ADVENTURE R / T	17

BRAKE FLUID RESERVOIR COVER



603.38.985.000 / 04

1090 ADVENTURE R	17
1190 ADVENTURE / R	13 – 16
1290 SUPER ADVENTURE	15 – 16
1290 SUPER ADVENTURE R / T	17

FACTORY OIL FILL PLUG



772.30.902.144

1090 ADVENTURE R	17
1190 ADVENTURE / R	13 – 16
1290 SUPER ADVENTURE	15 – 16
1290 SUPER ADVENTURE R / T	17

FACTORY IGNITION COVER PLUG



613.30.926.044

1090 ADVENTURE R	17
1190 ADVENTURE / R	13 – 16
1290 SUPER ADVENTURE	15 – 16
1290 SUPER ADVENTURE R / T	17

CLUTCH COVER





601.03.940.000

1090 ADVENTURE R	17
1190 ADVENTURE / R	13 – 16
1290 SUPER ADVENTURE	15 – 16
1290 SUPER ADVENTURE R / T	17

RALLY FOOT PEGS

Ride like our multiple Dakar winners – The RALLY FOOT PEGS come straight from the world of motorsports.

The benefits:

- » Enlarged tread surface area
- » Greater control
- » Fatigue-free riding standing up



762.03.940.044 FOR 601.03.940.000

1090 ADVENTURE R	17
1190 ADVENTURE / R	13 – 16
1290 SUPER ADVENTURE	15 – 16
1290 SUPER ADVENTURE R / T	17

RALLY FOOT PEG COMFORT INSERTS

The 2-piece comfort insert, made from high grade rubber, combines the benefits of the wide "RALLY FOOT PEGS" with the cushioning properties of rubber.



603.06.922.000

1090 ADVENTURE R	17
1190 ADVENTURE / R	13 – 16
1290 SUPER ADVENTURE	15 – 16
1290 SUPER ADVENTURE T	17

DUST PROTECTION KIT FOR INTAKE SYSTEM

Recommended for offroad use in regions with high sand and dust levels:

- » Helps prevent premature clogging up of the air filter
- » Simple fitting and cleaning



603.06.115.000

1090 ADVENTURE R	17
1190 ADVENTURE / R	13 – 16
1290 SUPER ADVENTURE	15 – 16
1290 SUPER ADVENTURE R / T	17

AIR FILTER

Recommended for offroad use in regions with high sand and dust levels.

390 DUKE

RC 390

690 DUKE/
ENDURO R

ADVENTURE

1290 SUPER DUKE R / GT

TOOLS

603.07.914.000

1190 ADVENTURE / R 13–16
1290 SUPER ADVENTURE R 17

TANK PROTECTION STICKER

Lasting protection for the paintwork on areas of the fuel tank subject to heavy wear.

- » Made from a high quality, elastic base film
- » Structured surface for better grip
- » No more unsightly scratches or matte areas on the tank



604.07.914.000 **TRANSPARENT**

1290 SUPER ADVENTURE 15–16
1290 SUPER ADVENTURE T 17

TANK PROTECTION STICKER

Lasting protection for the paintwork on areas of the fuel tank subject to heavy wear.

- » Made from a high quality, elastic base film
- » Structured surface for better grip
- » No more unsightly scratches or matte areas on the tank



603.02.179.000 / EB NEW

1090 ADVENTURE R	17
1290 SUPER ADVENTURE R / T	17

603.02.179.000 / 04

1190 ADVENTURE / R	13 – 16
1290 SUPER ADVENTURE	15 – 16
1290 SUPER ADVENTURE T	17

603.02.179.100 / 28

603.02.179.100 / 30

1090 ADVENTURE R	17
1190 ADVENTURE / R	13 – 16
1290 SUPER ADVENTURE	15 – 16
1290 SUPER ADVENTURE R / T	17

HANDGUARDS

The closed, two-component plastic handguards developed by KTM feature a black center section that offers maximum strength for optimum protection. The colorful upper and lower parts are highly flexible and endure even the roughest of treatment without complaint. The shape and design also provides outstanding weather protection.



760.02.979.000 / 04

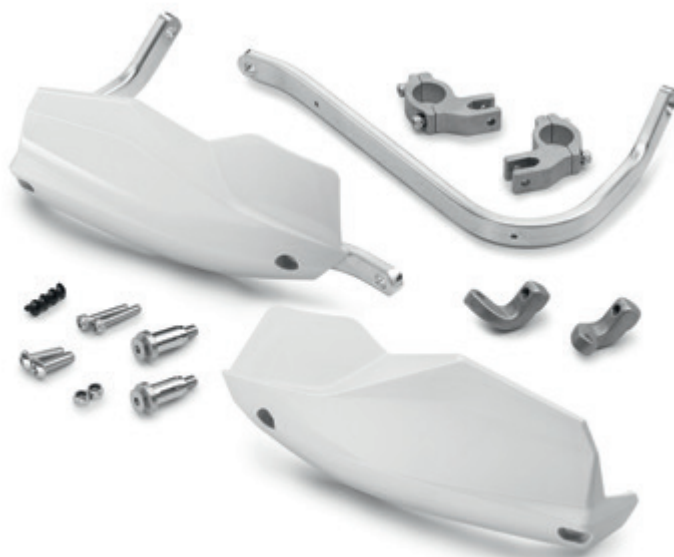
760.02.979.000 / 28

760.02.979.000 / 30

1090 ADVENTURE R	17
1190 ADVENTURE / R	13 – 16
1290 SUPER ADVENTURE	15 – 16
1290 SUPER ADVENTURE R / T	17

ALUMINUM HANDGUARDS

This handguard set has been specially developed for your motorcycle and is an essential accessory for extreme offroad sessions. The wide, spacious design ensures excellent mobility and maximum protection against impact, roost, branches, etc.





603.12.968.344 / EB NEW

1090 ADVENTURE R 17

603.12.968.344 / 04

1190 ADVENTURE 13–16

603.12.968.344 / 33

1090 ADVENTURE R 17

1190 ADVENTURE / R 13–16

1290 SUPER ADVENTURE R 17

ENGINE GUARDS

Plastic-coated tubular steel bars attached sturdily to the frame help protect the ADVENTURE tank in the event of minor crashes and falls.



604.03.990.044

1090 ADVENTURE R 17

1190 ADVENTURE / R 13–16

1290 SUPER ADVENTURE 15–16

1290 SUPER ADVENTURE R / T 17

SKID PLATE

If you're planning to take part in a rally or a trip through the most treacherous regions on Earth, or simply want to make your ADVENTURE look more like a rally bike – our skid plate makes that possible:

- » Heavy-duty design made of 6 mm thick, high-strength aluminum
- » Helps protect engine case and exhaust manifold
- » Protects against roost and other light impact damage

603.11.994.044

1090 ADVENTURE R	17
1190 ADVENTURE / R	13 – 16
1290 SUPER ADVENTURE	15 – 16
1290 SUPER ADVENTURE T	17

HEADLIGHT MASK

The headlamp protection for the ADVENTURE provides the most effective protection for the headlight glass:

- » Made from Makrolon, as used on the latest KTM factory rally bikes
- » Very sturdy, practically indestructible and the material will not splinter
- » Virtually invisible, detachable headlamp protection that further accentuates the design of the ADVENTURE



390 DUKE

RC 390

690 DUKE/
ENDURO R

ADVENTURE

1290 SUPER DUKE R / GT

TOOLS

604.35.940.044

1090 ADVENTURE R	17
1190 ADVENTURE / R	13 – 16
1290 SUPER ADVENTURE	15 – 16
1290 SUPER ADVENTURE R / T	17

RADIATOR PROTECTION GRILLE

The radiator protection grille provides excellent protection against roost impact:

- » Laser-cut, 1.5 mm thick, aluminum sheet
- » Black powder coating for corrosion protection



607.12.964.044 **NEW**

1290 SUPER ADVENTURE R	17
------------------------	----

603.12.964.044

1090 ADVENTURE R	17
1190 ADVENTURE / R	13 – 16

HEATED GRIPS

Warm hands, regardless of the weather! Controlled directly via the dashboard menu, so no additional switch is required.



601.10.051.042 / 04

T42

601.10.051.045 / 04

T45

1090 ADVENTURE R	17
1190 ADVENTURE / R	13 – 16
1290 SUPER ADVENTURE	15 – 16
1290 SUPER ADVENTURE R / T	17

2K REAR SPROCKET

If you're looking for the ultimate in quality and performance, this sprocket is the one for you!

- » High-strength steel teeth
 - » Aluminum inner ring
 - » Joined together permanently with high-strength rivets
 - » At least three times longer service life than other aluminum rear sprockets
 - » Only half as heavy as conventional steel rear sprockets
- Another benefit: longer service life for the entire drivetrain.



603.14.910.133

OFFROAD USE ONLY

1090 ADVENTURE R	17
1190 ADVENTURE / R	13 – 16
1290 SUPER ADVENTURE	15 – 16
1290 SUPER ADVENTURE T	17

AUXILIARY LED LAMP KIT

The two auxiliary lights, with their wide angle of illumination, significantly improve illumination of the roadway, thus increasing visibility when riding at night. Simple assembly.



390 DUKE

RC 390

690 DUKE/
ENDURO R

ADVENTURE

1290 SUPER DUKE R / GT

TOOLS





These software functions give you more control over how your motorcycle is set up. The functions you want on your motorcycle can be set up in just a few minutes. More information is available from your authorized KTM dealer.

604.00.950.000

1290 SUPER ADVENTURE 15–16
1290 SUPER ADVENTURE R 17

HILL HOLD CONTROL (HHC)

Increased convenience and assistance with stopping and starting on inclines.

- » HHC holds the vehicle for approx. 5 seconds when stopping on inclines (brake actuation required)
- » The brake releases automatically when starting or after approx. 5 seconds

604.00.970.000

1290 SUPER ADVENTURE 15–16
1290 SUPER ADVENTURE R 17

MOTOR SLIP REGULATION (MSR)

Greater control before and during cornering, as well as with alternating or slippery road surfaces:

- » Targeted intervention by the engine management system helps prevent the rear wheel from sliding due to engine braking

603.00.995.000

1190 ADVENTURE/R 13–16

AUTOMATIC TURN INDICATOR RESET (ATIR)

Enjoy greater convenience with the automatic indicator reset.

Make forgotten indicators after turning or passing a thing of the past.

- » Automatic reset after 10 seconds and a distance traveled of 500 feet
- » The counter is paused while the vehicle is stopped





603.12.953.000

1090 ADVENTURE R	17
1190 ADVENTURE / R	13 – 16
1290 SUPER ADVENTURE	15 – 16
1290 SUPER ADVENTURE R / T	17

DONGLE

The ABS dongle enables additional features in the ABS control unit and the ECU.

- » ABS mode "Offroad":
The ABS function is active on the front wheel only (single channel ABS). The rear wheel can lock at any time without engaging the ABS braking.
- » ABS mode "Off":
The ABS function is switched off and remains deactivated, even after the ignition has been switched back on. The rear and front wheels can lock at any time without engaging the ABS braking.
- » Function "Poor Fuel":
Reduced engine power for riding in countries with lower fuel quality (80 Octane).

+OPTIONAL
TRAVEL
PACK

607.00.900.000 **NEW**

1290 SUPER ADVENTURE R 17

TRAVEL PACK

The following functions are available once this feature has been activated by your authorized KTM dealer:

- » Hill Hold Control (HHC)
- » Motor Slip Regulation (MSR)
- » Quickshifter +
- » KTM MY RIDE



MY RIDE



616.00.930.000 **NEW**

1290 SUPER ADVENTURE R 17

KTM MY RIDE

Your smartphone can be synced to the bike via Bluetooth, giving you full control over incoming calls and audio. All the information appears on the bike's display, and you manage this optional feature with the mode switch. Allowing for you to keep your hands where they belong, on the handlebars.

616.00.940.000 **NEW**

1290 SUPER ADVENTURE R 17

QUICKSHIFTER +

Quickshifter + allows slick, clutchless up- and downshifts under any load. It reads and responds to your riding, so the shift action is fast when you are, but smooth at half-throttle.

390 DUKE

RC 390

690 DUKE/
ENDURO R

ADVENTURE

1290 SUPER DUKE R / GT

TOOLS

606.07.940.000

1090 ADVENTURE R	17
1190 ADVENTURE / R	13 – 16
1290 SUPER ADVENTURE	15 – 16
1290 SUPER ADVENTURE R / T	17

ERGO SEAT

Under the premium cover consists technologically advanced components:

- » The 3D structural mesh special foam with built-in tunnel form, ensures even pressure distribution, and thus increases seating comfort
- » The optimized shape provides more freedom for the legs and better contact with the motorcycle
- » +20 mm seat height
- » Easy assembly



606.07.947.000

1090 ADVENTURE R	17
1190 ADVENTURE / R	13 – 16
1290 SUPER ADVENTURE	15 – 16
1290 SUPER ADVENTURE R / T	17

PASSENGER ERGO SEAT

Visually a perfect match for the rider's Ergo Seat.



TOOLS

1290 SUPER DUKE R / GT

ADVENTURE

690 DUKE /
ENDURO R

RC 390

390 DUKE



603.07.940.000

1090 ADVENTURE R 17
1190 ADVENTURE/R 13-16

ERGO HEATED SEAT

Under the premium cover consists technologically advanced components:

- » The 3D structural mesh special foam with built-in tunnel form, ensures even pressure distribution, and thus increases seating comfort
- » The optimized shape provides more freedom for the legs and better contact with the motorcycle
- » +20 mm seat height
- » Easy assembly

Seat heater:

- » Adjustable to three levels
- » Rapid heating power and long lifespan, thanks to the Kevlar heating element



603.07.947.000

1090 ADVENTURE R 17
1190 ADVENTURE/R 13-16

PASSENGER ERGO HEATED SEAT

Visually and technically, this is the perfect match for the rider's Ergo Heated Seat:

- » Seat heater can be adjusted to three levels independently from the rider Ergo seat
 - » Rapid heating power and long lifespan thanks to the Kevlar heating element
- Can only be used in conjunction with the rider Ergo Heated Seat.

607.07.940.000 **NEW**

1290 SUPER ADVENTURE 15 – 16
1290 SUPER ADVENTURE R / T 17

ERGO HEATED SEAT

Under the premium cover consists technologically advanced components:

- » The 3D structural mesh special foam with built-in tunnel form, ensures even pressure distribution, and thus increases seating comfort
 - » The optimized shape provides more freedom for the legs and better contact with the motorcycle
 - » +20 mm seat height
 - » Easy assembly
- Seat heater:
- » Adjustable to three levels
 - » Rapid heating power and long lifespan, thanks to the Kevlar heating element



607.07.947.000 **NEW**

1290 SUPER ADVENTURE 15 – 16
1290 SUPER ADVENTURE T 17

607.07.947.044 **NEW**

1290 SUPER ADVENTURE R 17

PASSENGER ERGO HEATED SEAT

Visually and technically, this is the perfect match for the rider's Ergo Heated Seat:

- » Seat heater can be adjusted to three levels independently from the rider Ergo seat
- » Rapid heating power and long lifespan thanks to the Kevlar heating element

390 DUKE

RC 390

690 DUKE/
ENDURO R

ADVENTURE

1290 SUPER DUKE R / GT

TOOLS

607.07.940.044 **NEW**

1290 SUPER ADVENTURE R

17

604.07.940.000

1290 SUPER ADVENTURE

15 – 16

1290 SUPER ADVENTURE T

17

SINGLE-PIECE ERGO HEATED SEAT

Under the premium cover consists technologically advanced components:

- » The 3D structural mesh special foam with built-in tunnel form, ensures even pressure distribution, and thus increases seating comfort
- » The optimized shape provides more freedom for the legs and better contact with the motorcycle
- » +15 mm seat height
- » Easy assembly

Seat heater:

- » Adjustable to three levels
- » Rapid heating power and long lifespan, thanks to the Kevlar heating element





610.12.932.000

1090 ADVENTURE R	17
1190 ADVENTURE / R	13 – 16
1290 SUPER ADVENTURE	15 – 16
1290 SUPER ADVENTURE R / T	17

RADIAL ROADLOK

Patented RoadLoK technology provides you with the most effective and elegant option for protecting your KTM from theft.

All the benefits at a glance:

- » Lock body machined from high-grade aluminum
- » Premium quality, orange anodized surface finish
- » Bolted directly to the brake caliper
- » High-strength steel pin slides directly into the holes of the brake disc
- » No vehicle movement possible when locked



SXS.07.125.200

1090 ADVENTURE R	17
1190 ADVENTURE / R	13 – 16
1290 SUPER ADVENTURE	15 – 16
1290 SUPER ADVENTURE R / T	17

PHDS-PROGRESSIVE HANDLEBAR DAMPING SYSTEM

The CNC-machined handlebar mounting with cushioning rubber inserts relieves wrist and shoulder joints.

Further benefits of the PHDS:

- » Cushioning of heavy hits
- » Absorption of vibration from the chassis and engine
- » Additional handlebar damping in horizontal direction
- » Optimum steering precision
- » Handlebar height adjustable to 2 positions
- » Further damping elements available in three degrees of hardness
Green (Soft) SXS.05.125.203, Yellow (Standard) SXS.05.125.204 and
Red (Hard) SXS.05.125.205. PHDS Bar Pad also available: SXS.07.250.800



789.01.939.044

32 MM

789.01.939.144

37 MM

789.01.939.244

42 MM

789.01.939.344

47 MM

789.01.939.344 / 30

47 MM

NEW

789.01.939.444

52 MM

1090 ADVENTURE R	17
1190 ADVENTURE / R	13 – 16
1290 SUPER ADVENTURE	15 – 16
1290 SUPER ADVENTURE R / T	17

HANDLEBAR MOUNTING KIT

Available in five different heights. Included in the kit are 2x handlebar support lower parts and 2x fastening bolts. The upper parts and bolts required for clamping the handlebar are taken from the original handlebar support.



601.12.035.000

1090 ADVENTURE R	17
1190 ADVENTURE / R	13–16
1290 SUPER ADVENTURE	15–16
1290 SUPER ADVENTURE R / T	17

ALARM SYSTEM

Protect your motorcycle with the plug and play KTM PowerParts alarm system.

The benefits at a glance:

- » Plug & play system – wiring harness ready for fitting
- » Reliable, dual-circuit immobilizer
- » Integrated microchip motion sensor
- » Storage compartment under seat, protected additionally with a reed switch
- » Two watertight, anti-scan radio transmitters with rolling code

Note:

- » Mounting kit 607.12.935.044 or 603.12.935.044 is required for installation



607.12.935.044 **NEW**

1290 SUPER ADVENTURE R / T	17
----------------------------	----

603.12.935.044

1090 ADVENTURE R	17
1190 ADVENTURE / R	13–16
1290 SUPER ADVENTURE	15–16

ALARM SYSTEM MOUNTING KIT

Required for installing Alarm System 601.12.035.000; contains all the necessary parts for attaching it securely to the vehicle.

Robust and elegant aluminum case, perfect for daily rides and back road adventures:

- » Body made from 1.5 mm thick aluminum
- » Designed for extreme use
- » Completely waterproof and warp-resistant
- » Completely clearance-free seat, even after thousands of miles ridden
- » Quick assembly
- » Tried-and-tested, high quality lockable stainless steel fittings
- » Built-in locks (not included in delivery) can be retrofitted without the need for drills or files
- » Total width including cases: 107 cm

Also required:

- » 603.12.927.044 back plate for aluminum top case
- » 603.12.912.144 case carrier for aluminum cases

Options available:

- » 601.12.924.050 lock kit (sold individually)



603.12.927.044

1090 ADVENTURE R	17
1190 ADVENTURE / R	13 – 16
1290 SUPER ADVENTURE	15 – 16
1290 SUPER ADVENTURE R / T	17

CARRIER PLATE FOR ALUMINUM TOP CASE

Carrier plate for aluminum top case 601.12.929.100.

601.12.929.100

1090 ADVENTURE R	17
1190 ADVENTURE / R	13 – 16
1290 SUPER ADVENTURE	15 – 16
1290 SUPER ADVENTURE R / T	17

38 L ALUMINUM TOP CASE

- » Dimensions: 315 mm x 400 mm x 300 mm
- » Volume: 38 liters
- » Weight: 6.4 lbs
- » Maximum load: 11 lbs





603.12.912.144

1090 ADVENTURE R	17
1190 ADVENTURE / R	13 – 16
1290 SUPER ADVENTURE	15 – 16
1290 SUPER ADVENTURE R / T	17

CASE CARRIER FOR ALUMINUM CASES

Robust case carrier system for mounting the aluminum cases:

- » Simple fitting to available mounting points
- » No modification necessary to passenger foot pegs
- » Optimum load transfer through existing mounting points on the chassis



603.12.923.000

1090 ADVENTURE R	17
1190 ADVENTURE / R	13 – 16
1290 SUPER ADVENTURE	15 – 16
1290 SUPER ADVENTURE R / T	17

31 L ALUMINUM CASE

- » Dimensions: 443 mm x 203 mm x 393 mm
- » Volume: 31 liters
- » Weight: 9 lbs
- » Maximum load: 22 lbs



603.12.922.000

1090 ADVENTURE R	17
1190 ADVENTURE / R	13 – 16
1290 SUPER ADVENTURE	15 – 16
1290 SUPER ADVENTURE R / T	17

45 L ALUMINUM CASE

- » Dimensions: 443 mm x 283 mm x 393 mm
- » Volume: 45 liters
- » Weight: 10.6 lbs
- » Maximum load: 22 lbs

390 DUKE

RC 390

690 DUKE/
ENDURO R

ADVENTURE

1290 SUPER DUKE R / GT

TOOLS

NEW

607.12.932.000

1090 ADVENTURE R	17
1190 ADVENTURE / R	13 - 16
1290 SUPER ADVENTURE	15 - 16
1290 SUPER ADVENTURE R/T	17

TOURING CASE SET

- » 36 liters capacity, left
- » 30 liters capacity, right (recess for main silencer)
- » Dimensions on both sides: 50 cm x 39 cm x 41 cm
- » Vehicle width with both cases: 104 cm
- » Maximum load: 22 lbs per side



A case set that perfectly matches the KTM ADVENTURE Family; it was an integral part of the vehicle's development right from the beginning.

- » Materials: plastic and aluminum
- » Lockable with vehicle key
- » Can be mounted and removed in seconds
- » Optional inner bags available



607.12.929.000 **NEW**

1090 ADVENTURE R	17
1190 ADVENTURE / R	13 – 16
1290 SUPER ADVENTURE	15 – 16
1290 SUPER ADVENTURE R / T	17

TOURING TOP CASE

- » Floating plate prevents the vehicle from oscillating, side-to-side at high speeds
- » Dimensions: 50 cm x 34 cm x 38 cm
- » Volume: 36 liters
- » Maximum load: 11 lbs

One of the following carrier plates is also required for mounting:

- » 1090 ADVENTURE 606.12.910.044

607.12.929.030 **NEW**

1090 ADVENTURE R	17
1190 ADVENTURE / R	13 – 16
1290 SUPER ADVENTURE	15 – 16
1290 SUPER ADVENTURE R / T	17

BACKREST FOR TOURING TOP CASE

The optional backrest provides the passenger with greater comfort.

607.12.924.060 **NEW**

1090 ADVENTURE R	17
1190 ADVENTURE / R	13 – 16
1290 SUPER ADVENTURE	15 – 16
1290 SUPER ADVENTURE R / T	17

INNER BAG TOURING CASE LEFT AND TOP CASE

The clever option for the luggage case system. Whether you're staying in a tent or a hotel, your luggage is always close at hand.

607.12.925.060 **NEW**

1090 ADVENTURE R	17
1190 ADVENTURE / R	13 – 16
1290 SUPER ADVENTURE	15 – 16
1290 SUPER ADVENTURE R / T	17

INNER BAG TOURING CASE RIGHT

The clever option for the luggage case system. Whether you're staying in a tent or a hotel, your luggage is always close at hand.



603.12.929.000

1090 ADVENTURE R	17
1190 ADVENTURE / R	13 – 16
1290 SUPER ADVENTURE	15 – 16
1290 SUPER ADVENTURE T	17

42 L TOURING TOP CASE

- » Floating plate prevents the vehicle from oscillating, side-to-side at high speeds
- » Dimensions: 49 cm x 30 cm x 40 cm
- » Volume: 42 liters
- » Maximum load: 11 lbs

Required carrier plate for mounting:

- » KTM 1090 ADVENTURE 606.12.910.044



603.12.929.030

1090 ADVENTURE R	17
1190 ADVENTURE / R	13 – 16
1290 SUPER ADVENTURE	15 – 16
1290 SUPER ADVENTURE T	17

BACKREST FOR TOURING TOP CASE

The optional backrest provides the passenger with greater comfort.



603.12.924.060

1090 ADVENTURE R	17
1190 ADVENTURE / R	13 – 16
1290 SUPER ADVENTURE	15 – 16
1290 SUPER ADVENTURE T	17

42 L TOURING CASE INNER BAG

For use with left touring case and touring top case.



603.12.925.060

1090 ADVENTURE R	17
1190 ADVENTURE / R	13 – 16
1290 SUPER ADVENTURE	15 – 16
1290 SUPER ADVENTURE T	17

31 L RIGHT TOURING CASE INNER BAG

The clever option for the luggage case system. Whether you're staying in a tent or a hotel, your luggage is always close at hand.

A case set that perfectly matches the KTM ADVENTURE Family; it was an integral part of the vehicle's development right from the beginning.

- » Materials: plastic and aluminum
- » Lockable with vehicle key
- » Can be mounted and removed in seconds
- » Optional inner bags available



603.12.932.100

1090 ADVENTURE R	17
1190 ADVENTURE / R	13 – 16
1290 SUPER ADVENTURE	15 – 16
1290 SUPER ADVENTURE T	17

TOURING CASE SET

- » 42 liters capacity, left
- » 31 liters capacity, right (recess for main silencer)
- » Dimensions on both sides: 49 cm x 30 cm x 40 cm
- » Vehicle width with both cases: 96 cm
- » Maximum load: 22.5 lbs per side

781.12.978.100

1090 ADVENTURE R	17
1190 ADVENTURE / R	13 – 16
1290 SUPER ADVENTURE	15 – 16
1290 SUPER ADVENTURE R / T	17

5 L UNIVERSAL REAR BAG

Storage space for everything that needs to be readily at hand on tour, such as tools, drinks, mobile phone, etc.

- » Made from robust, waterproof material
- » Welded seams
- » Volume: 5 liters

Fitting with supplied straps:

- » On the vehicle rear end
- » At the lashing eyes on the case lid



601.12.078.000

1090 ADVENTURE R	17
1190 ADVENTURE / R	13 – 16
1290 SUPER ADVENTURE	15 – 16
1290 SUPER ADVENTURE R / T	17

38 L LUGGAGE BAG

Completely waterproof and flexible in size! The ideal solution for both long and short tours from time to time.



603.12.978.044

1190 ADVENTURE / R	13 – 16
1290 SUPER ADVENTURE	15 – 16
1290 SUPER ADVENTURE R / T	17

EXTENDED CARRIER PLATE

Extra-large carrier plate, perfect for carrying miscellaneous luggage:

- » Ideal for transporting luggage bag 601.12.078.000
- » Not suitable for mounting a top case
- » Maximum load: 11 lbs

One of the following carrier plates is also required for mounting:

- » 1090 ADVENTURE 606.12.910.044



606.12.910.044

1090 ADVENTURE / R	17
--------------------	----

CARRIER PLATE

This back plate for the 1050 / 1090 ADVENTURE is required as the base for the following parts:

- » BACK PLATE 603.12.927.044 FOR ALUMINUM TOP CASE
- » 42 L TOURING TOP CASE 603.12.929.000
- » EXTENDED BACK PLATE 603.12.978.044



620.12.927.000 / EB NEW

1090 ADVENTURE R	17
1290 SUPER ADVENTURE R / T	17

620.12.927.000 / 04

1190 ADVENTURE / R	13–16
1290 SUPER ADVENTURE	15–16
1290 SUPER ADVENTURE T	17

620.12.927.000 / BH NEW

620.12.927.000 / 28

620.12.927.000 / 30

1090 ADVENTURE R	17
1190 ADVENTURE / R	13–16
1290 SUPER ADVENTURE	15–16
1290 SUPER ADVENTURE R / T	17



48 L TOP CASE

With 48 liters of storage space, this top case easily stows two full-face helmets. It makes use of a practical press-lock system and a combination lock for opening the cover and releasing the latch.

- » Dimensions 61 cm x 46 cm x 31 cm
- » Volume 48 liters

One of the following carrier plates is also required for mounting:

- » 603.12.927.000 + 606.12.910.044 = 1090 ADVENTURE
- » 603.12.927.000 = 1190 ADVENTURE / R
- » 603.12.927.000 = 1290 SUPER ADVENTURE

Options available:

- » 620.12.027.055 Backrest for Top Case 48 L



603.12.927.000

1190 ADVENTURE / R	13–16
1290 SUPER ADVENTURE	15–16
1290 SUPER ADVENTURE R / T	17

CARRIER PLATE FOR TOP CASE

For top cases 620.12.927.000 / 04 / 28 / 30 / EB / BH

One of the following carrier plates is also required for mounting:

- » KTM 1090 ADVENTURE 606.12.910.044



604.12.919.000

1090 ADVENTURE R	17
1190 ADVENTURE / R	13 – 16
1290 SUPER ADVENTURE	15 – 16
1290 SUPER ADVENTURE R / T	17

QUICK RELEASE TANK BAG

Our most advanced tank bag:

- » Attachment using QUICK-LOCK EVO System
- » Tank bag mounted and removed in seconds
- » Made from durable 600D MBD polyester with sturdy EVA base
- » Map pocket and individual compartments
- » Extremely robust fasteners, with large zip pullers
- » All-round expandable volume increases capacity from 13 to 16 liters
- » Scope of supply: Tank bag, QUICK-LOCK EVO system, rain hood and carrying strap



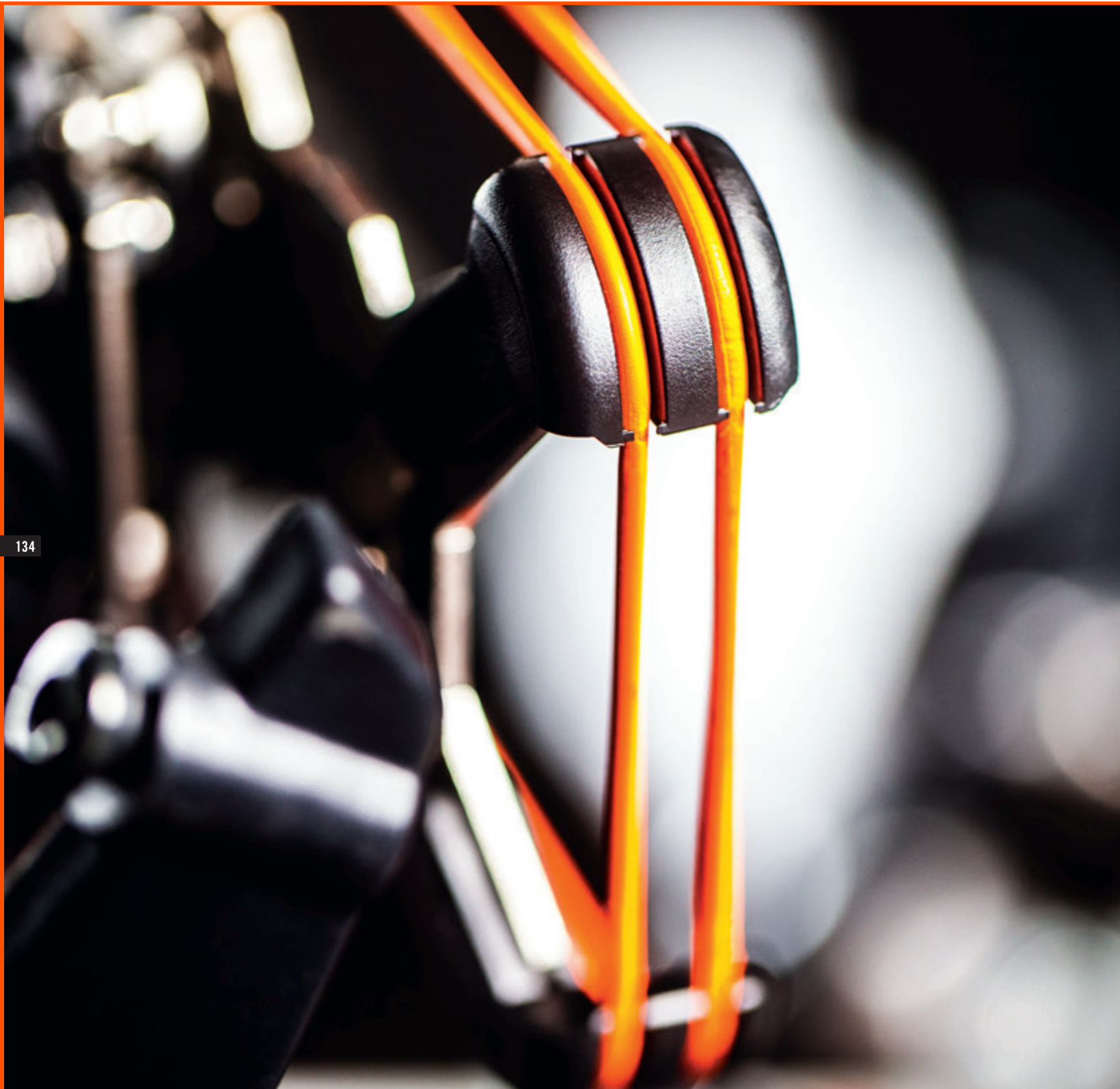
750.12.919.000

1090 ADVENTURE R	17
1190 ADVENTURE / R	13 – 16
1290 SUPER ADVENTURE	15 – 16
1290 SUPER ADVENTURE R / T	17

TANK BAG

The ideal companion for every tour:

- » Manufactured from durable nylon, with abrasion-resistant edging made from reflective material
- » Extremely robust, all-round zip fasteners
- » Map pocket, individual compartments
- » Attached with sturdy soft ties
- » Max. volume 18 liters
- » Scope of supply: tank bag, waterproof inner bag and shoulder strap





603.12.992.044

1090 ADVENTURE R 17
1190 ADVENTURE / R 13–16

GPS/iBRACKET MOUNT

Fits perfectly into the ADVENTURE cockpit! Protects the GPS against vibrations, adjustable inclination (light incidence). Suitable for all Garmin / TomTom GPS devices, the KTM GPS / PDA bag and the iBracket.



607.12.992.044 **NEW**

1290 SUPER ADVENTURE R 17

604.12.992.044

1290 SUPER ADVENTURE 15–16
1290 SUPER ADVENTURE T 17

GPS/iBRACKET MOUNT



604.12.993.000 iBRACKET iPHONE 5/5S/5C

604.12.993.400 iBRACKET iPHONE 6/7

604.12.993.500 iBRACKET iPHONE 6 PLUS/7 PLUS

604.12.993.600 iBRACKET GALAXY S5/S6/S6 EDGE/S7

1090 ADVENTURE R 17
1190 ADVENTURE / R 13–16
1290 SUPER ADVENTURE 15–16
1290 SUPER ADVENTURE R / T 17

iBRACKET

The iBracket is the perfect solution for attaching your smartphone quickly and securely to your vehicle.

- » Intelligent 3D closure with one-handed operation
- » CNC laser-cut and shaped stainless steel components
- » Tailor-made precision closure contour
- » Plastic corners with UV light-resistant silicone rings
- » Rotatable by 90°

The iBracket can be fitted on all our GPS bracket mounts and it takes only a few minutes. Also suitable for other smartphones. A current list is available from your authorized KTM dealer.



620.02.903.150

1090 ADVENTURE R	17
1190 ADVENTURE / R	13 – 16
1290 SUPER ADVENTURE	15 – 16
1290 SUPER ADVENTURE R/T	17

GPS/PDA BAG LARGE

Keeps documents, maps, navigation and communication equipment (e. g., cellphone) dry and protected against vibration in your field of vision.

- » Suitable for all KTM GPS bracket mounts
- » Size: 170 x 130 x 35 mm



930.02.903.100

1090 ADVENTURE R	17
1190 ADVENTURE / R	13 – 16
1290 SUPER ADVENTURE	15 – 16
1290 SUPER ADVENTURE R/T	17

GPS/BRACKET/PDA BAG MOUNT

Only for use on original handlebar mounting.

603.08.965.500

1090 ADVENTURE R 17
1190 ADVENTURE / R 13–16

TOURING WINDSCREEN

Greater wind protection for larger riders, for relaxed, fatigue-free travelling:

- » Greater wind protection on long trips
- » Less turbulence around the helmet and in the neck area
- » Height: 385 mm
- » Tinted design







INTENSIFY YOUR RIDE

TOOLS

1290 SUPER DUKE R / GT

ADVENTURE

690 DUKE/
ENDURO R

RC 390

390 DUKE

Puts your KTM perfectly in the limelight with premium quality carbon.

- » Made from highest quality carbon fiber
- » Many times stiffer and lighter than the standard plastic components



613.08.910.000 / 49

1290 SUPER DUKE R 14 – 17
1290 SUPER DUKE GT 16 – 17

CARBON FRONT FENDER (FRONT SECTION)



613.04.950.100 / 49 **NEW**

1290 SUPER DUKE GT 16 – 17

613.04.950.000 / 49

1290 SUPER DUKE R 14 – 17

CARBON SPLASH PROTECTION AND CHAINGUARD



693.08.010.000 / 49

1290 SUPER DUKE R 14 – 17
1290 SUPER DUKE GT 16 – 17

CARBON FRONT FENDER (COMPLETE)



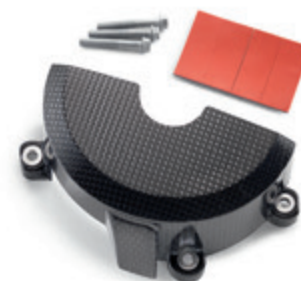
613.30.986.044

1290 SUPER DUKE R 14 – 17
1290 SUPER DUKE GT 16 – 17

CARBON CLUTCH COVER PROTECTION

Factory look with maximum protection for the clutch cover:

- » Carbon-Kevlar design
- » 5 mm thick in concentrated areas to provide maximum protection



693.30.985.044

1290 SUPER DUKE R 14 – 17
1290 SUPER DUKE GT 16 – 17

CARBON IGNITION COVER PROTECTION

Factory look with maximum protection for the ignition cover:

- » Carbon-Kevlar design
- » 5 mm thick in concentrated areas to provide maximum protection

614.07.958.044 **NEW**

1290 SUPER DUKE GT 16–17

616.07.958.000 **NEW**

1290 SUPER DUKE R 17

CARBON TANK IGNITION LOCK COVER



613.07.908.000 

1290 SUPER DUKE R 14–17

RACING FUEL CAP

Refueling like the professionals: keyless and extremely quick.

- » Machined from high-grade aluminum with an anodized surface finish
- » Not lockable

Closed course competition use only.

613.07.958.000 / 49

1290 SUPER DUKE R

14–16

CARBON TANK IGNITION LOCK COVER



390 DUKE

RC 390

690 DUKE/
ENDURO R

ADVENTURE

1290 SUPER DUKE R / GT

TOOLS



614.05.911.000 / 49 **NEW**

1290 SUPER DUKE R 17
1290 SUPER DUKE GT 16–17

CARBON EXHAUST COVER KIT



613.05.984.044

1290 SUPER DUKE R 14–16

CARBON SILENCER BRACKET

Uncompromising race look for your KTM 1290 SUPER DUKE R, without any annoying passenger foot pegs:

- » Made from highest grade carbon
- » Extremely light and stiff
- » Installs at the mounting points of the passenger foot pegs
- » Suitable for standard silencer and Akrapovič Slip-on silencer
- » Not in combination with Akrapovič Evolution complete system



613.05.911.000 / 49

1290 SUPER DUKE R 14–16

CARBON EXHAUST COVER KIT

Puts your KTM perfectly in the limelight with premium quality carbon.

- » Made from highest quality carbon fiber
 - » High-gloss finish, suitable for Akrapovič slip-on silencer
- 613.05.979.100/614.05.979.000/33



TOOLS

1290 SUPER DUKE R / GT

ADVENTURE

690 DUKE/
ENDURO R

RC 390

390 DUKE

Your requirements: weight reduction, racing look, unique sound

Our response: Akrapovič Slip-on silencer:

- » Made from high-grade titanium
- » Weight saving: approx. 3.3 lbs
- » Laser engraved 1290 SUPER DUKE / Akrapovič logo
- » Plug & play fitting

613.05.979.100 **50**

1290 SUPER DUKE R 14 – 17

AKRAPOVIČ SLIP-ON SILENCER



614.05.979.000 / 33 **50**

1290 SUPER DUKE R 14 – 17
1290 SUPER DUKE GT 16 – 17

AKRAPOVIČ SLIP-ON SILENCER



616.05.999.000 **NEW** **MAP** 

1290 SUPER DUKE R 17

613.05.999.000 **MAP** 

1290 SUPER DUKE R 14 – 16

AKRAPOVIČ EVOLUTION COMPLETE SYSTEM

Your desire - our goal: more power & torque, uncompromising race look and substantial weight savings.

- » Made completely from high-grade titanium
 - » Weight savings: approx. 13.2 lbs.
 - » Laser engraved 1290 Super Duke R / Akrapovic logo
 - » Includes engine mapping tuned to the EVO system
 - » Header 613.05.907.000 / silencer 613.05.989.000 can only be fitted together
 - » Kit also includes: 1 x 613.05.922.044 SAS removal kit and 1 x 603.06.915.000 racing air filter
 - » Cannot be used in combination with 613.12.925.000 SIDE BAG SET
- Closed course competition use only.



390 DUKE

RC 390

690 DUKE/
ENDURO R

ADVENTURE

1290 SUPER DUKE R / GT

TOOLS



These high-quality aluminum CNC components feature a superior abrasion-resistant eloxal coating and make a bold visual statement.

613.30.926.044

1290 SUPER DUKE R 14–17
1290 SUPER DUKE GT 16–17

CLUTCH COVER



613.13.962.000

1290 SUPER DUKE R 14–17
1290 SUPER DUKE GT 16–17

REAR BRAKE RESERVOIR CAP



146

580.30.985.000 / 04

1290 SUPER DUKE R 14–17
1290 SUPER DUKE GT 16–17

FACTORY OIL FILL PLUG



613.13.909.000

1290 SUPER DUKE R 14–17
1290 SUPER DUKE GT 16–17

BRAKE FLUID RESERVOIR COVER



603.04.937.100

1290 SUPER DUKE R 14–17
1290 SUPER DUKE GT 16–17

SWINGARM BOLT COVER SET

CNC-machined cover for the swingarm pivot.



613.02.933.000

1290 SUPER DUKE R 14–15

613.02.933.100

1290 SUPER DUKE R 16–17
1290 SUPER DUKE GT 16–17

CLUTCH RESERVOIR CAP





772.30.902.144 **NEW**

1290 SUPER DUKE R 14-17
1290 SUPER DUKE GT 16-17

FACTORY IGNITION COVER PLUG



614.10.937.000

1290 SUPER DUKE R 14-17
1290 SUPER DUKE GT 16-17

REAR AXLE COVER



613.13.932.244

1290 SUPER DUKE R 14-17
1290 SUPER DUKE GT 16-17

"RACE STYLE" BRAKE LEVER GUARD

613.13.931.244

1290 SUPER DUKE R 14-17
1290 SUPER DUKE GT 16-17

CLUTCH LEVER GUARD "RACE STYLE"

Derived from MotoGP and our RC CUP bikes:

- » Protects the lever in the event of unintentional ground contact
- » Simple exchange of the standard handlebar weight
- » Lever guard made from unbreakable plastic
- » Handlebar fitting made from high-grade cast aluminum
- » Plastic guard is replaceable individually



613.07.940.000

1290 SUPER DUKE R 14 – 17

ERGO SEAT

Under the premium cover consists technologically advanced components:

- » The 3D structural mesh special foam with built-in tunnel form ensures even pressure distribution and thus increases seating comfort
- » The optimized shape provides more freedom for the legs and better contact with the motorcycle
- » +20 mm seat height
- » Easy assembly



616.07.947.000 **NEW**

1290 SUPER DUKE R 17

613.07.947.000

1290 SUPER DUKE R 14 – 16

PASSENGER ERGO SEAT

Visually a perfect match for the rider's Ergo seat.



614.07.940.000

1290 SUPER DUKE GT 16 – 17

ERGO SEAT HEATED

Under the premium cover consists technologically advanced components:

- » The 3D structural mesh special foam with built-in tunnel form ensures even pressure distribution and thus increases seating comfort
- » The optimized shape provides more freedom for the legs and better contact with the motorcycle
- » +13 mm seat height
- » Easy assembly

Seat heater:

- » Adjustable to three levels
- » Rapid heating power and long lifespan thanks to the Kevlar heating element



614.07.947.000

1290 SUPER DUKE GT 16 – 17

PASSENGER ERGO SEAT HEATED

Visually and technically, this is the perfect match for the rider's heated Ergo seat:

- » Seat heater can be adjusted to three levels independently from the rider Ergo seat
- » Rapid heating power and long lifespan thanks to the Kevlar heating element

607.12.964.044 **NEW**

1290 SUPER DUKE R 17

603.12.964.044

1290 SUPER DUKE R 14 – 16

HEATED GRIPS

Warm hands, regardless of the weather! Controlled directly via the dashboard, so no additional switch is required.



614.08.908.000

1290 SUPER DUKE GT 16 – 17

WINDSCREEN

This tinted windscreen corresponds to the dimensions of the series windscreen, but has also been fitted with a special anti-scratch coating.





601.12.035.000

1290 SUPER DUKE R 14 – 17
1290 SUPER DUKE GT 16 – 17

ALARM SYSTEM

Protect your motorcycle with the plug and play KTM PowerParts alarm system.

The benefits at a glance:

- » Plug & play system – wiring harness ready for fitting
- » Reliable, dual-circuit immobilizer
- » Integrated microchip motion sensor
- » Storage compartment under seat protected additionally with a reed switch
- » Two watertight, anti-scan radio transmitters with rolling code

Note:

- » Mounting kit 613.12.935.044 is required for installation



614.12.935.044

1290 SUPER DUKE R 14 – 17
1290 SUPER DUKE GT 16 – 17

ALARM SYSTEM MOUNTING KIT

Required for installing alarm system 601.12.035.000; contains all the necessary parts for fixing it securely to the vehicle.



610.12.932.000

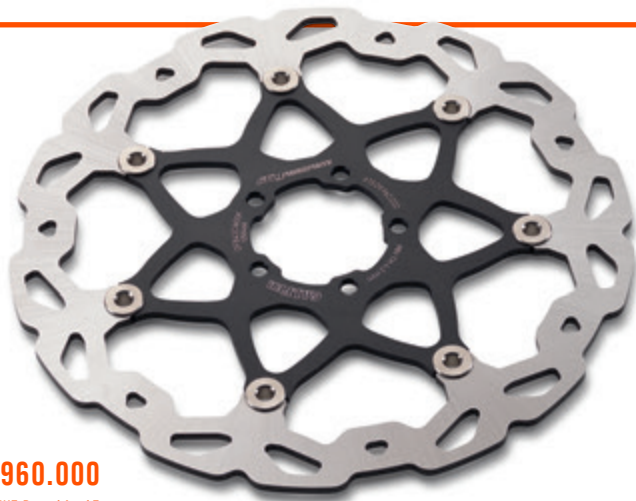
1290 SUPER DUKE R 14 – 17
1290 SUPER DUKE GT 16 – 17

RADIAL ROADLOK

Patented RoadLoK technology provides you with the most effective and elegant option for protecting your KTM from theft.

All the benefits at a glance:

- » Lock body machined from high-grade aluminum
- » Premium quality, orange anodized surface finish
- » Bolted directly to the brake caliper
- » High-strength steel pin slides directly into the holes of the brake disc
- » No vehicle movement possible when locked



613.09.960.000

1290 SUPER DUKE R 14 – 17
1290 SUPER DUKE GT 16 – 17

WAVE BRAKE DISC 320 MM

Whether it be punishing missions on the racetrack or touring with a passenger and luggage, our WAVE brake discs supply the same high level of deceleration in every situation with outstanding controllability.

- » Brake disc outer ring: rustless, high-performance brake steel
- » Black anodized aluminum inner ring
- » Floating mounting: no distortion, no brake vibration
- » No fading, consistent braking performance at the highest level
- » More braking power (+25 % braking power) thanks to materials from the world of racing
- » Less hand force for the same braking power



613.10.960.000

1290 SUPER DUKE R 14 – 17
1290 SUPER DUKE GT 16 – 17

WAVE BRAKE DISC 240 MM

WAVE brake disc for the rear wheel – a perfect match visually and technically for the 320mm front wave brake disc.

- » Rustless, high-performance brake steel
- » No fading, consistent braking performance at the highest level
- » Perfect application



613.09.945.000

1290 SUPER DUKE R 14 – 17
1290 SUPER DUKE GT 16 – 17

FRONT SLIDE PADS

Helps protect the fork from damage in the event of a slide.



613.08.915.100 

1290 SUPER DUKE R 14 – 17

LICENSE PLATE HOLDER SHORT

Substantially shortened version of the licence plate holder for use at the racetrack. Closed course competition use only.



613.08.914.000

1290 SUPER DUKE R 14 – 17

PASSENGER SEAT COVER "RACE"

READY TO RACE in a matter of minutes. Simply replace the passenger seat with the passenger seat cover. Includes rear light cover. Closed course competition use only.



613.07.940.044

1290 SUPER DUKE R 14 – 17

PASSENGER SEAT COVER

Race look in a matter of seconds; no tools required.



614.08.915.044

1290 SUPER DUKE GT 16 – 17

LICENSE PLATE HOLDER SHORT

Shortened version of the licence plate holder that perfectly draws attention to the slender rear end.



613.08.901.000

1290 SUPER DUKE R 14 – 16

NUMBER PLATE KIT

Closed course competition use only.



693.08.910.000

1290 SUPER DUKE R 14 – 17

FIBERGLASS FRONT FENDER



613.08.947.000

1290 SUPER DUKE R 14 – 17

RACE SEAT

Searching for the perfect solution for track days?

The PowerParts race seat supplies you with the following benefits:

- » Fiberglass race seat with approx. 2 cm more seat height
- » Narrower contour for greater freedom of movement, better contact with the fuel tank for more control, easier hanging off
- » A more direct feel for your bike and the road surface
- » An absolute must for every ambitious hobby racer
- » Simple fitting to existing mounting points
- » Replacement foam pad: 613.08.947.010

390 DUKE

RC 390

690 DUKE/
ENDURO R

ADVENTURE

1290 SUPER DUKE R / GT

TOOLS



613.08.999.000

1290 SUPER DUKE R 14 – 16

"RACE" GRAPHICS KIT

Stand out from the competition with our "RACE" edition graphics.



613.09.999.000

1290 SUPER DUKE R 14 – 17

RIM STICKER SET

New, three-colored design

- » Set for front and rear wheel
- » Pre-cut stickers

000.10.000.153



000.10.000.154



1290 SUPER DUKE R 14 – 16

FAIRING KIT

Fairing kit in original KTM colors without decals.



613.08.999.100

1290 SUPER DUKE R 14 – 16

"STYLE" GRAPHICS KIT

Give your bike a unique look and stand out from the crowd with these jaw dropping "Style" graphics.





616.08.999.000 **NEW**

1290 SUPER DUKE R 17

"STYLE" GRAPHICS KIT

Give your bike a unique look and stand out from the crowd with these jaw dropping "Style" graphics.



613.09.999.100 / 04



613.09.999.100 / 28

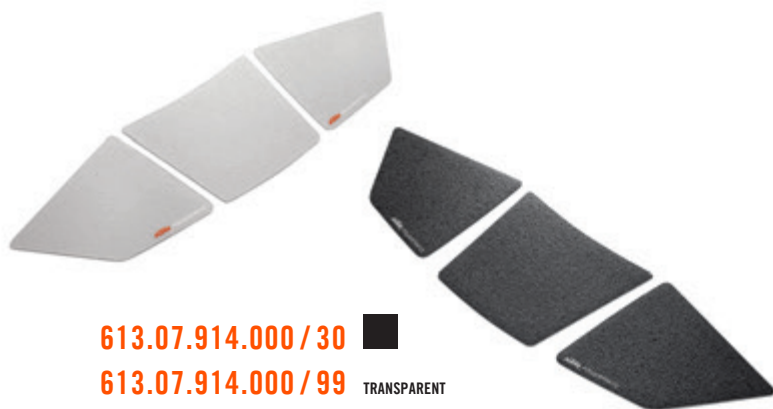


1290 SUPER DUKE R

14 – 17

RIM STICKER SET

- » Pre-cut "Racing" lettering
- » Complete set for front and rear wheel



613.07.914.000 / 30



613.07.914.000 / 99

TRANSPARENT

1290 SUPER DUKE R

14 – 17

TANK PROTECTION STICKER

Lasting protection for the paintwork at areas of the fuel tank subject to heavy wear.

- » Made from a high quality, elastic base film
- » Structured surface for better grip
- » No more unsightly scratches or matte areas on the tank



614.07.914.000 / 30

1290 SUPER DUKE GT

16 – 17

TANK PROTECTION STICKER

Lasting protection for the paintwork at areas of the fuel tank subject to heavy wear.

- » Made from a high quality, elastic base film
- » Structured surface for better grip
- » No more unsightly scratches or matte areas on the tank

390 DUKE

RC 390

690 DUKE/
ENDURO R

ADVENTURE

1290 SUPER DUKE R / GT

TOOLS





These software functions give you more control over how your motorcycle is set up. The functions you want on your motorcycle can be set up in just a few minutes. More information is available from your authorized KTM dealer.

616.00.910.000

NEW

1290 SUPER DUKE R17

+OPTIONAL

TRACK
PACK

TRACK PACK

The following functions are available once this has been activated by your authorized KTM dealer:

- » "Track" mode
- » Anti-wheelie mode off
- » Launch control
- » Traction control slip adjust

More information is available from your authorized KTM dealer!

616.00.920.000

NEW

1290 SUPER DUKE R17

+OPTIONAL

PERFORMANCE
PACK

PERFORMANCE PACK

The following functions are available once this has been activated by your authorized KTM dealer:

- » Quickshifter +
- » KTM MY RIDE
- » Motor Slip Regulation (MSR)

616.00.930.000

NEW

1290 SUPER DUKE R17

« ■ »

MY RIDE

KTM

KTM MY RIDE

Your smartphone can be synced to the bike via Bluetooth, giving you full control over incoming calls and audio. All the information appears on the bike's display, and you manage this optional feature with the mode switch. Allowing for you to keep your hands where they belong, on the handlebars.

616.00.940.000

NEW

1290 SUPER DUKE R17

QUICKSHIFTER +

Quickshifter + allows slick, clutchless up- and downshifts under any load. It reads and responds to your riding, so the shift action is fast when you are, but smooth at half-throttle.

604.00.970.000

1290 SUPER DUKE R 17
1290 SUPER DUKE GT 16 – 17

MOTOR SLIP REGULATION (MSR)

Greater before and during cornering, as well as with alternating or slippery road surfaces:

- » Targeted intervention by the engine management system helps prevent the rear wheel from sliding due to engine braking

604.00.950.000

1290 SUPER DUKE GT 16 – 17

HILL HOLD CONTROL (HHC)

The optional Hill Hold Control (HHC) prevents the motorcycle from accidentally rolling backwards. It identifies if the bike is on a slope and at a standstill. After the rider has released the brake, the function automatically keeps the brakes applied until you are moving forward. In short: a smooth take-off, time and time again.

603.00.995.000

1290 SUPER DUKE R 14 – 16

AUTOMATIC TURN INDICATOR RESET (ATIR)

Enjoy greater convenience with the automatic indicator reset.

Make forgotten indicators after turning or passing a thing of the past.

- » Automatic reset after 10 seconds and a distance traveled of 500 feet
- » The counter is paused while the vehicle is stopped

613.00.910.000 

1290 SUPER DUKE R 14 – 17

LIGHT DIAGNOSIS DEACTIVATION (LDD)

READY TO RACE! without annoying warning lamps on the dashboard if the vehicle lighting needs to be removed or disabled for race course use. This software function can only be used in combination with the additionally required dongle.

- » 613.12.953.044 Dongle
- Closed course competition use only.

390 DUKE

RC 390

690 DUKE/
ENDURO R

ADVENTURE

1290 SUPER DUKE R / GT

TOOLS

613.12.953.044

1290 SUPER DUKE R 14 – 17
1290 SUPER DUKE GT 16 – 17



DONGLE

The ABS dongle enables additional features in the ABS control unit.

» ABS mode "Supermoto":

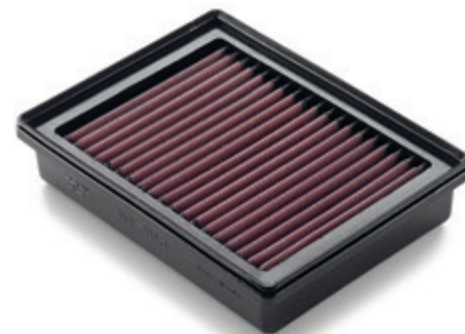
The ABS function is active on the front wheel only (single channel ABS).

The rear wheel can lock at any time without engaging the ABS braking.

» ABS mode "Off":

The ABS function is switched off and remains deactivated, even after the ignition has been switched back on. The front and rear wheels can lock at any time without engaging the ABS braking.

Your authorized KTM dealer will have the detailed functional overview for your machine ready for you.



603.06.915.000

1290 SUPER DUKE R 14 – 17

RACING AIR FILTER

Can only be used in conjunction with Akrapovič Evolution complete system 613.05.999.000.

Closed course competition use only.



613.05.922.044

1290 SUPER DUKE R 14 – 17

SAS REMOVAL KIT

Contains all parts required for removing the SAS system.

Fitting only in combination with special mapping and

Akrapovič complete system 613.05.999.000.

Closed course competition use only.



613.12.905.033

1290 SUPER DUKE R 14 – 17

STEERING DAMPER KIT

You need the option to adapt your steering damper to your personal riding style, the part that keeps the front wheel on course, even when accelerating hard.

We have the suitable solution:

- » High-end WP Suspension steering damper
- » Damping adjustable in 30 clicks

Kit consists of:

- » Mounting kit 613.12.905.044
- » Steering damper 161.81.L01.S01

**CAN ONLY BE USED IN CONJUNCTION WITH THE "RACE" TRIPLE CLAMP
613.01.999.144/04 OR 616.01.999.044/04!**



613.03.901.044

1290 SUPER DUKE R 14–17
1290 SUPER DUKE GT 16–17

HANDLEBAR STOP PROTECTION SET

A must for every rider with sporting ambition! This PowerPart protects the original handlebar stop from bending. Thanks to the simple assembly, it can be replaced quickly following a fall. Which means your KTM is READY TO RACE at all times!

- » Race track tested (KTM RC CUP)
- » Made from extremely high grade polyamide material



613.03.937.044

1290 SUPER DUKE R 14–17
1290 SUPER DUKE GT 16–17

ADJUSTABLE REAR SET

Are you seeking complete control of your bike and perfect ergonomics for your legs? Coupled with racing looks, this is what our CNC rear set offers:

- » Fully adjustable rear set
 - » 5 foot peg positions => 20 mm lower and higher / 25 mm forwards and backwards from the standard foot peg position
 - » CNC-machined from high-grade aircraft aluminum
 - » Premium quality, hardwearing anodized surface finish
 - » Inverted shifting scheme possible with 613.34.930.044
- Closed course competition use only.



613.34.930.044

1290 SUPER DUKE R 14–17
1290 SUPER DUKE GT 16–17

REVERSE GEAR CHANGE KIT

Can only be used in conjunction with rear set 613.03.937.044.
Closed course competition use only.

613.11.946.044

1290 SUPER DUKE R 14 – 16

SIDE STAND REMOVAL KIT

For easy side stand removal:

- » Contains all parts required for removing the side stand
- » Adapter cable for the side stand switch prevents malfunctions in the vehicle electronics

Closed course competition use only.



616.01.999.044 / 04

1290 SUPER DUKE R

17

613.01.999.144 / 04

1290 SUPER DUKE R

14 – 16

"RACE" TRIPLE CLAMP

CNC-machined aluminum triple clamp for a pure race feeling.

- » Manufactured from high-strength aluminum
- » High quality, orange anodized surface finish
- » Stiffer than the standard triple clamp
- » More precise handling in hard braking maneuvers
- » Less fork wear in the clamp area, thanks to better pressure distribution





TOOLS

1290 SUPER DUKE R / GT

ADVENTURE

690 DUKE/
ENDURO R

RC 390

390 DUKE



613.12.928.000

1290 SUPER DUKE R 14–17
1290 SUPER DUKE GT 16–17

24-36 L EXPANDABLE REAR BAG

The ideal solution for short trips or the daily ride to work.

- » Volume: 24–36 liters
- » Includes rain cover
- » Strap attachment to the passenger seat or the carrier plate



613.12.978.000

1290 SUPER DUKE R 14–17
1290 SUPER DUKE GT 16–17

10-30 L EXPANDABLE REAR BAG

Small items, such as a mobile phone, wallet, keys, etc., are taken care of perfectly. Simple fitting with straps on the passenger seat. The benefit: No difficult-to-fit carriers that spoil the slender rear profile of the bike. With the rear bag attached, the bike can only be used as a single seater. Capacity 10–30 liters.

616.12.925.044 **NEW**

1290 SUPER DUKE R 17

613.12.925.044

1290 SUPER DUKE R 14–16

SIDE BAG CARRIER

Innovative side bag carrier: virtually invisible when side bags are removed.



616.12.925.000 **NEW**

1290 SUPER DUKE R 17

613.12.925.000

1290 SUPER DUKE R 14–16

SIDE BAG SET

Our newly developed and styled side bags provide sufficient storage space for both short weekend tours and extended trips.

- » Integrate perfectly into the vehicle design
- » No restrictions for the passenger; sufficient space for their legs
- » Volume per side: 18 liters
- » Includes waterproof inner bags
- » Side bag carrier 613.12.925.044 not included in scope of supply
- » Cannot be used in combination with Akrapovič Evolution complete system 613.05.999.000



614.12.927.033 **NEW**

1290 SUPER DUKE GT 16 – 17

CARRIER PLATE

This carrier plate is the base for mounting our 38 L luggage bag 601.12.078.000 or our 48 L 620.12.927.000/EB/BH/28/30 top cases.



601.12.078.000 **NEW**

1290 SUPER DUKE GT 16 – 17

38 L LUGGAGE BAG

Completely waterproof and flexible in size! The ideal solution for both long and short tours from time to time.



620.12.927.000 / EB **NEW**

620.12.927.000 / BH **NEW**

620.12.927.000 / 28 **NEW**

620.12.927.000 / 30 **NEW**

1290 SUPER DUKE GT

16 – 17

48 L TOP CASE

With 48 liters of storage space, this top case easily stows two full-face helmets. It makes use of a practical press-lock system and a combination lock for opening the cover and releasing the latch.

- » Dimensions 61 cm x 46 cm x 31 cm
- » Volume 48 liters

Additionally, for the assembly the carrier plate is required:

- » 614.12.927.033 = 1290 SUPER DUKE GT
- Options available:
- » 620.12.027.055 Backrest for 48 L Top Case

390 DUKE

RC 390

690 DUKE/
ENDURO R

ADVENTURE

1290 SUPER DUKE R / GT

TOOLS



614.12.925.000 / EB 

614.12.925.000 / BH 

1290 SUPER DUKE GT

16 – 17

GT CASE SET

Our recently developed side cases fit perfectly with the GT vehicle design and provide more than enough storage space for your next tour!

- » 30 liter volume on both sides provides enough space for helmets
 - » Weighing in at only 7.5 lbs, each case can take a maximum load of 15 lbs
 - » Can be mounted and removed in seconds
 - » Lockable with vehicle key
 - » The ergonomic handle disappears completely into the case
 - » Protectors painted to match vehicle color
 - » Includes luggage net
- Optional inner bags available:
- » Set for left and right-hand sides 614.12.928.044



614.12.928.044 **NEW**

1290 SUPER DUKE GT 16 – 17

INNER BAG SET FOR "GT" CASE SET

Whether you are camping or staying in a hotel: Your luggage is always at hand. The smart option for your luggage system 614.12.925.000 / EB / BH.

390 DUKE

RC 390

690 DUKE/
ENDURO R

ADVENTURE

1290 SUPER DUKE R / GT

TOOLS



750.12.919.000

1290 SUPER DUKE R 14 – 17
1290 SUPER DUKE GT 16 – 17

TANK BAG

The ideal companion for every tour:

- » Manufactured from durable nylon, with abrasion-resistant edging made from reflective material
- » Extremely robust, all-round zip fasteners
- » Map pocket, individual compartments
- » Attached with sturdy soft ties
- » Max. volume 18 liters
- » Scope of supply: tank bag, waterproof inner bag, shoulder strap



781.12.978.100

1290 SUPER DUKE R 14 – 17
1290 SUPER DUKE GT 16 – 17

5 L UNIVERSAL REAR BAG

Storage space for everything that needs to be readily at hand on tour, such as tools, drinks, mobile phone, etc.

- » Made from robust, waterproof material
- » Welded seams
- » Volume: 5 liters

Fitting with supplied straps:

- » On the vehicle rear end
- » At the lashing eyes on the case lid

616.12.919.000 **NEW**

1290 SUPER DUKE R 14 – 17

614.12.919.000 **NEW**

1290 SUPER DUKE GT 16 – 17

TANK BAG

Catering for all needs:

- » Attachment using QUICK-LOCK EVO System
- » Tank bag mounted and removed in seconds
- » Made from durable 1680D Ballistic Nylon with sturdy EVA base
- » Extremely robust fasteners, with large zip pullers
- » All-round expandable volume increases capacity from 5 to 9 liters
- » Specifications supplied: Tank bag, QUICK-LOCK EVO system, rain hood, carrying





604.12.993.000 iPhone 5/5S/5C

604.12.993.400 iPhone 6/7

604.12.993.500 iPhone 6 PLUS/7 PLUS

604.12.993.600 GALAXY S5/S6/S6 EDGE/S7

1290 SUPER DUKE R 14 – 16

1290 SUPER DUKE GT 16 – 17

iBRACKET

The iBracket is the perfect solution for attaching your smartphone quickly and securely to your vehicle.

- » Intelligent 3D closure with one-handed operation
- » CNC laser-cut and shaped stainless steel components
- » Tailor-made precision closure contour
- » Plastic corners with UV light-resistant silicone rings
- » Rotatable by 90°

The iBracket can be fitted on all our GPS bracket mounts and it takes only a few minutes. Also suitable for other smartphones. A current list is available from your authorized KTM dealer.



614.12.992.044

1290 SUPER DUKE GT 16 – 17

GPS BRACKET MOUNT

Fits perfectly into the cockpit of the GT! Protects the GPS against vibrations, with adjustable inclination. Suitable for most Garmin/TomTom GPS devices, the KTM GPS/PDA bag and the iBracket.



613.12.992.044

1290 SUPER DUKE R 14 – 16

GPS / iBRACKET MOUNT

Suitable for mount Garmin/TomTom GPS devices, the KTM GPS/PDA bag and the iBracket.





THE RIGHT TOOLS FOR AN ENHANCED RIDE

TOOLS

1290 SUPER DUKE R / GT

ADVENTURE

690 DUKE/
ENDURO R

RC 390

390 DUKE



U690.9801

BATTERY CHARGER

Battery charger with test function.

Plus:

- » Constant current charging
- » Constant voltage charging
- » Trickle charging

Includes cable for fixed installation on the battery and plug for connecting the battery quickly to the charger.



760.11.953.000 ALL LC4 MODELS

LITHIUM ION BATTERY 10S

Our lithium ion batteries offer the following advantages:

- » Only approx. 1/3 of the weight of the comparable lead-acid battery
- » Unbeatable cost/weight-saving ratio
- » Installable in any position as they contain no acid
- » Contains no heavy metals
- » Quick charging possible with high charging current (up to 90 % in 6 min)
- » Very low self-discharge (max. 5 % per month)
- » Reliable technology and long service life



781.29.984.000

TIRE LEVER SET

Made from high-strength, orange-anodized aluminum; not suitable for fitting tires with mousse. With integrated ring spanners 32 mm, 27 mm, 13 mm and 10 mm.



510.12.093.000 (A)

510.12.092.000 (B)

TIRE LEVER

There's racing experience here as well! Practical tire iron – short version ideal for the portable tool bag. Long version for minimum effort.



777.10.976.150 / 04

VALVE CAP SET



777.10.976.050 / 04

VALVE CAP SET

Orange anodized valve caps with valve opening function.



773.12.030.000

FOOT PUMP

Small and light, so very portable – saves the day in the event of a puncture on the road! Mini-footpump with pressure gauge on the swiveling valve head that fits all prevalent valves. Integrated double-cylinder with pressure switch-over to high pressure. Maximum 174 PSI. Height: approx. 7" folded together.



000.29.901.000

BEAD BUDDY

The Bead Buddy acts as your third hand when fitting tires. Holds the tire in the tire bed, thereby making tire fitting much easier. Simply hook it into the spokes and away you go.



U695.1099

TIRE GAUGE

Easy to use! Measuring range 0-60 PSI. Clamping head rotatable through 90° on a flexible stainless steel feed line. The valve shaft is therefore accessed easily and quickly. Very accurate measurements by way of a durable internal membrane. Internal pressure is reduced after use by a relief valve (push button).



773.29.068.000

DIGITAL TIRE GAUGE

Comfortable and easy to use. Fits all standard valves. Pressure display in bar or psi. Integrated pressure release valve for accurate pressure adjustment. Disengageable display and work area lighting. Energy-saving function with automatic cut-off. Maximum measuring pressure: 160 PSI.









693.29.955.000

REAR WHEEL STAND

One of the following adapter versions (not included in scope of supply) is required for use: Workshop (693.29.955.010), Universal (693.29.955.030) or Universal V-adapter (610.29.955.244 / 610.29.955.144).



611.29.965.000

FRONT WHEEL STAND

Includes mounting adapter. May only be used if the rear wheel stand is already fitted.



693.29.965.000

FRONT WHEEL LIFTING DEVICE

In combination with the rear wheel lifting gear, this front wheel lifting gear ensures optimum support for winter storage and for maintenance.

Please order the vehicle-specific support mandrel separately:

- » 693.29.965.040 23.5 mm (1290 SUPER DUKE GT / R)
- » 693.29.965.030 19.0 mm (1290 SUPER DUKE R, 390 DUKE / RC)
- » 693.29.965.020 23.5 mm (RC8 / R)
- » 693.29.965.010 14.0 mm (LC4, 990 LC8)



613.29.955.000

1290 SUPER DUKE R 14 – 17
1290 SUPER DUKE GT 16 – 17

REAR WHEEL STAND FOR SINGLE-SIDED SWINGARM

Rear wheel stand specially designed for the axle of the KTM 1290 SUPER DUKE's single-sided swingarm.

610.29.055.244

690 SUPERMOTO / DUKE / ENDURO / SMC
950 / 990 ADVENTURE
990 SUPER DUKE
950 / 990 SM
1190 ADVENTURE
1290 SUPER ADVENTURE

BOBBINS FOR REAR WHEEL STAND



693.29.955.030

UNIVERSAL RUBBER ADAPTER



610.29.955.244

390 DUKE
RC 390

610.29.955.144

690 SUPERMOTO / DUKE / ENDURO / SMC
950 / 990 ADVENTURE
990 SUPER DUKE
950 / 990 SM
1190 ADVENTURE
1290 SUPER ADVENTURE

UNIVERSAL V-ADAPTER WITH SLEEVES



693.29.955.010

690 SM / DUKE / ENDURO / SMC
950 / 990 ADVENTURE
990 SUPER DUKE
950 / 990 SM
1190 ADVENTURE
1290 SUPER ADVENTURE

WORKSHOP ADAPTERS



780.12.006.000

PIT MAT

This mat is already mandatory at many races. The special material mix prevents fuel spills from seeping into the ground. The mat helps in tracking tools, bolts and other small loose parts when servicing outdoors. The special KTM design brings the total factory look to your service zone. Size: 40" x 63".

U695.1277

FOLDING BIKE RAMP

High quality, folding aluminum ramp with straps for secure attachment on loading. Weighing in at 12.1 lbs, it withstands a load of 397 lbs. The total length is approx. 78", folded approx. 40".



TOOLS

1290 SUPER DUKE R / GT

ADVENTURE

690 DUKE/
ENDURO R

RC 390

390 DUKE



610.12.016.000

BRAKE LOCK

Practical help when loading the bike or lifting it up with the rear wheel lifting device.



601.12.002.000

TRANSPORT HARNESS STREET

This new transport harness is quickly attached to your street bike's handlebar. Together with the KTM soft ties, your bike is perfectly secured. The plastic handlebar mountings are extremely robust and equipped with a special plastic insert to prevent damage to the handlebar.

Our KTM tie-downs feature built-in soft tie loops that allow you to secure your KTM without scratching your handlebars. 1.5 inch wide webbing units feature high-quality friction lock fasteners. KTM orange / black with distinctive KTM PowerParts markings.

U691.0046

SOFT TIE-DOWNS WITH HOOKS

Soft strap tie-downs with standard hook.



U691.0047

SOFT TIE-DOWNS WITH CLIPS

Soft strap tie-downs with clips.



U691.0048

SOFT TIE-DOWNS WITH RATCHET

Soft strap tie-downs with ratchets. Great for hauling heavier motorcycles.



U691.0049

SOFT TIES

The tough KTM soft ties allow the bike to be secured without scratching the handlebar or the fuel tank. Made from durable ballistic nylon, they have a load-bearing capacity of 600 lbs. Dimensions: 1.5 in x 24 in.



KTM Motorex co-branded products are the direct result of a decade-long racing and development partnership between KTM and Motorex. The research and development over the years results in the absolute best lubricants available for your KTM motorcycle.

KTM Motorex oils are formulated from the highest-quality synthetic PAO and Ester base stocks and are JASO MA certified. JASO MA oils are required for use in 4-stroke KTM motorcycles that use a wet clutch and a single oiling system for the engine, transmission and wet clutch system. KTM Motorex guarantees MA performance in its JASO MA-rated lubricants.



U691.3032

1L/12

U691.3033

4L/4

MOTOREX POWER SYNT 4T 10W/50

1290 ADVENTURE
1190 ADVENTURE
950/990 ADVENTURE
1290 SUPER DUKE R / GT
690 DUKE
690 ENDURO
1190 RC 8 R



U691.3025

1L/12

MOTOREX CROSS POWER 4T 10W/60

690 DUKE
690 ENDURO

U691.3034

1L/12

MOTOREX FORMULA 4T 15W/50
390 DUKE
RC 390



U691.3036

1L/6

MOTOREX MOTO CLEAN



U691.3035

1L/12

MOTOREX COOLANT M3.0 RTU



U691.3028

500ML/12

MOTOREX CHAINLUBE



U691.3030

250ML/12

MOTOREX BRAKE FLUID 5.1

390 DUKE

RC 390

690 DUKE/
ENDURO R

ADVENTURE

1290 SUPER DUKE R / GT

TOOLS

U695.1130

CABLE TIES ORANGE
100 x, length: 20 cm.



772.31.997.000 / 04

VENT HOSE

Should only be used for venting purposes and not as a replacement for a stock fuel hose. Fuel-proof for tank venting. approx. 3 m.

590.29.050.000

FUNNEL

Funnel specially developed for KTM motorcycles. Diameter (small and large) optimized to suit the filler neck; special groove for optimum ventilation.



180

613.29.985.000

1290 SUPER DUKE R 14-17
1290 SUPER DUKE GT 16-17

REAR WHEEL HOOK WRENCH



781.12.973.000 / 99

SQUARE PLASTIC DRUM - CLEAR

5 gal, KTM plastic drum for use on the racetrack. Includes a flexible hose and screw cap. Not to be used for storage and transportation of gasoline. Replacement parts available: Hose U690.8899, Cap U691.0033, Vent cap U691.0034, Orange can decal 781.12.973.001



781.12.973.000

SQUARE PLASTIC DRUM - ORANGE

5 gal, KTM orange plastic drum. Complete with flexible hose and screw cap. Not to be used for storage and transportation of gasoline. Replacement parts available: Hose U690.8899, Cap U691.0033, Vent cap U691.0034, Decal U695.1563



750.29.964.000 / 04

690 LC4
990 SUPER DUKE R
RC8 / R
1190 ADVENTURE / R
1290 SUPER ADVENTURE
1290 SUPER DUKE R / GT

INJECTOR BOX

Offers secure and clean storage of a spare injector to have with you in case an injector gets contaminated during your adventure. Provides space for one injector, as well as the associated seals.



(A)

790.12.030.100 / 04 (A)

15 MM – 38 MM

790.12.030.000 / 04 (B)

37 MM – 62 MM

EXHAUST PLUG

Keeps water out of the silencer during cleaning.



(B)

780.29.063.000

MEASURING CUP 1,000 ML

1 liter Volume. With scaling for both the fluid level and different mixture ratios. Perfect for changing the oil. Simple handling thanks to the ergonomic design.



790.29.930.000

PIT BOARD

To display the most important information to your rider during racing and practice. Marker included.



812.12.016.100

FUEL HOSE WASH CAP SET

Highly recommended when washing the bike thoroughly; in other words, when the fuel tank is removed. Prevents water from entering the fuel line.

390 DUKE

RC 390

690 DUKE/
ENDURO R

ADVENTURE

1290 SUPER DUKE R / GT

TOOLS



000.29.098.300

TOOLBOX

38-piece, 1/4" toolbox in orange with high-quality, chrome-vanadium tools. Complete your everyday maintenance tasks quickly and easily.

Contents:

- » Ratchet (with locking device), lever, two extensions and socket wrench
- » Hexagon sockets from 4 to 15 mm
- » Allen keys from 3 to 8 mm
- » Phillips, slotted and Torx bits



000.29.098.400

TOOLBOX

60-piece, 3/8" toolbox in orange with high-quality, chrome-vanadium tools. Complete your everyday maintenance tasks quickly and easily.

Contents:

- » Ratchet (with locking device), lever, two extensions and socket wrench
- » Hexagon sockets from 6 to 24 mm
- » Allen keys from 3 to 10 mm
- » Phillips and slotted bits
- » Torx bits from 15 to 55 mm





000.29.996.000

TORQUE WRENCHES

High-quality, adjustable torque wrench 2–25 NM, includes the following accessories:

- » Push-on spoke wrenches in sizes 5.65 and 6.95 mm
- » Push-on ratchet ¼"
- » Ratchet attachments: 8, 10, 13 mm socket wrench, 15 Torx



000.29.997.000 **NEW**

MULTI TOOL

The perfect alternative tool for on the go. Conveniently packaged in a small bag you can use the tool with the following fittings: 14, 12, 10, 8 mm hexagon sockets; 6, 8, 13 mm socket wrench; inserts for slotted and Phillips screw heads; 5 mm/6 mm Allen keys; 25/30 and 40/45 Torx; bottle opener and an option for attaching 3/8" and 1/4" socket wrenches.



583.12.078.000

TOOL BAG

The optimum solution for always having the most important tools at hand.



000.29.098.200

SCREWDRIVER SET

High quality, 5-piece screwdriver set in the KTM design.

600.12.016.000

HIGH SECURITY U-LOCK

High-quality U-lock made from hardened steel with a double locking mechanism. Locking cylinder with optimum protection against any attempts at manipulation. 250,000 key versions. Two keys supplied as standard. Includes rotating PVC cover that protects the cylinder lock from dirt. High quality corrosion protection.



503.05.017.000 / 04

SPRING HOOK

Simple spring removal.



583.10.025.000

WHEEL ALIGNMENT GAUGE

The ideal tool for checking perfect wheel position when tensioning the chain.



579.29.020.000

5/8" X 1/4"

CHAIN BREAKER



590.29.041.000

0,10; 0,12; 0,15; 0,20; 0,25.

590.29.041.100

0,05; 0,10; 0,15; 0,20; 0,25; 0,30; 0,35.

FEELER GAUGES

390 DUKE

RC 390

690 DUKE/
ENDURO R

ADVENTURE

1290 SUPER DUKE R / GT

TOOLS



000.62.030.059

TURBO WIPES CLEANING TOWELETTE

Always at hand, practical and highly effective! The Turbo cleaning towelettes remove most unhardened sealant, oil and lubricants from hands, tools and surfaces.



548.12.016.000

SAFETY WIRE

200 m wire with 0.61 mm in diameter.



000.62.030.050

SCREW LOCKING

Degrease and clean parts with KTM power cleaner before use; contents: 50 ml.



000.29.015.000

WIRE PLIERS

Recommended, very practical, high quality tool to help you twist safety wire 548.12.016.000 like a professional.

689.9785

LOCTITE 243 BLUE
6 ccm.



000.62.030.056

POWER GLUE

25 ml. The power glue is extremely resistant to impact, peel, tensile stress and weather. It can withstand temperatures from -104 to +104 °F, it is resistant to grease, oils, fuels, water and much more. Quickly fix plastic and metal parts without extensive surface preparation.

000.62.030.051

GRIP GLUE
20 g. A firm hold for your grips.



000.62.030.057

CARBON GLUE

25 ml. The mixture ratio is automatically regulated in the carbon glue. For repairing plastic and carbon parts, ready for further rework after only approx. 10–30 minutes. Extremely high strength, temperature resistant from -104 to +284 °F, resistant to greases, oils, fuels, water and many more.



000.62.030.058

REPAIR KIT

56 g. The repair kit is a two-component, epoxy resin adhesive. Hardens at room temperature, accelerated hardening possible by raising temperature. Use: Particularly suitable for steel, but also for other metals, wood, concrete, ceramics, glass and most plastics. The steel bond is resistant to oil, petrol, diesel and battery acid. Processing: Best results with clean and rough surfaces. The repaired part can be used again after as little as 60 minutes. The surface to be glued must be dry and free from dust and grease.

390 DUKE

RC 390

690 DUKE/
ENDURO R

ADVENTURE

1290 SUPER DUKE R / GT

TOOLS



590.12.007.000

OUTDOOR PROTECTIVE COVER

625.12.007.000

INDOOR PROTECTIVE COVER

No hope for dust, scratches, etc. The indoor bike cover turns every KTM into a real eye-catcher in the garage. The fabric consists of a special material with a distinctive structure that is impermeable to dust and dirt. The inner side has a soft lining.



613.12.007.000

"BEAST" OUTDOOR PROTECTIVE COVER

The KTM outdoor bike cover. The cover is made from an exclusive, pigmented fabric.

607.12.007.000

1090 ADVENTURE R	17
1190 ADVENTURE / R	13 – 16
1290 SUPER ADVENTURE	15 – 16
1290 SUPER ADVENTURE R / T	17

ADVENTURE OUTDOOR MOTORCYCLE COVER

This motorcycle cover for outside use has been specifically adapted for the ADVENTURE models and ensures perfect protection in all seasons.

- » Adapted to fit all ADVENTURE models
- » Cases can remain on the vehicle and be covered together with the motorcycle
- » Eyelets for firmly strapping the cover in place
- » Heat protector around the exhaust area
- » Transparent recess for the license plate allowing you to also park and cover the motorcycle on public roads

The cover is made from an exclusive fabric:

- » Tear-resistant
- » Cold-resistant
- » UV-resistant
- » Breathable

NEW



390 DUKE

RC 390

690 DUKE/
ENDURO R

ADVENTURE

1290 SUPER DUKE R / GT

TOOLS

Always consult your local authorized KTM dealer for the range of conversion parts, replacement parts necessary mounting parts, as well as any and all part options for your particular KTM model.

KTM IS NOT LIABLE FOR IMPROPER INSTALLATION OR USE OF ANY OF ITS PRODUCTS.

Please follow all instructions provided. Professional advice and proper installation of the KTM_PowerParts by an authorized KTM dealer are essential to provide maximum function.

KTM North America reserves the right to alter or discontinue without replacement, equipment, technical details, colors, pricing, materials, services, service work, etc. without notice and without reason, as well as cease production of certain models without prior notice. For this reason we recommend you ask your local authorized KTM dealer for further information before ordering or purchasing a specific model. KTM North America accepts no liability for printing errors.

LEGAL DISCLAIMER

The riders illustrated are professional motorcycle riders and should not be emulated. The photos were taken on a closed racing circuit or closed roads. KTM draws to the attention of all motorcycle riders that they should abide by all traffic laws and regulations, that they should wear the recommended protective clothing and always ride in a responsible way. Some photos feature European Spec motorcycles.



KTM NORTH AMERICA INC.
1119 Milan Ave, Amherst, OH 44001
38429 Innovation Court, Murrieta, CA 92563
8701 Rue Samuel-Hatt, Chambly, QC J3L-6V4
www.ktm.com



KTM POWERPARTS **KTM POWERWEAR** **KTM RIDE ORANGE**

KTM ORIGINAL SPARE PARTS



* 3 2 1 2 7 2 6 N A *

© 2017, KTM NORTH AMERICA, INC.