

READY TO RACE
» www.ktm.com

KTM POWERPARTS OFFROAD 2018



KTM



KTM POWERPARTS


| | | | | | |
|----|----------------------------------|-----|--|-------------------------------------|---------|
| | INTRO | 004 | | 11 CHAINS + SPROCKETS | 094 |
| 1 | ENGINE | 006 | | SPROCKETS | 094 |
| 2 | EXHAUST | 014 | | CHAINS | 095 |
| | TWO-STROKE | 014 | | SPECIAL PARTS | 096 |
| | FOUR-STROKE | 024 | | 12 BRAKES | 098 |
| 3 | HANDLEBAR + INSTRUMENTS/ELECTRIC | 032 | | BRAKE CYLINDER | 098 |
| | GRIPS | 032 | | BRAKE CALIPER | 099 |
| | LEVER | 036 | | BRAKE DISCS | 100 |
| | HANDGUARDS | 040 | | BRAKE PADS | 104 |
| | HANDLEBAR | 044 | | SERVICE | 106 |
| | HANDLEBAR SUPPORT | 046 | | SPECIAL PARTS | 107 |
| | STEERING DAMPER | 047 | | 13 COOLING | 108 |
| | INSTRUMENTS/ELECTRIC | 050 | | FANS | 108 |
| | SPECIAL PARTS | 052 | | PROTECTION | 112 |
| 4 | CNC PARTS ANODIZED | 054 | | 14 PROTECTION | 114 |
| | ENGINE | 054 | | ENGINE PROTECTION TWO-STROKE | 114 |
| | CHASSIS | 060 | | ENGINE PROTECTION TWO + FOUR-STROKE | 117 |
| 5 | PLASTIC PARTS + DECALS | 062 | | ENGINE PROTECTION FOUR-STROKE | 118 |
| | PLASTIC PARTS | 062 | | CHASSIS | 124 |
| | DECALS | 064 | | 15 AIR FILTER | 132 |
| 6 | SEATS | 070 | | 16 NAVIGATION + LUGGAGE | 134 |
| 7 | FOOTPEGS | 076 | | 17 FREERIDE | 136 |
| 8 | TANKS | 078 | | 18 50/65/85 SX | 154 |
| 9 | SUSPENSION | 080 | | 19 TOOLS + TRANSPORTATION | 186 |
| 10 | WHEELS | 090 | | TOOLS | 186 |
| | OFFROAD | 090 | | STANDS | 198 |
| | SUPERMOTO | 091 | | TRANSPORTATION | 201 |
| | SPECIAL PARTS | 092 | | WP // RIDE HARDER | 086–089 |
| | | | | | 170–173 |



When you see this symbol, you can rest assured that you've made the best choice, because our Factory Team relies on this KTM PowerParts product.

50-STATE 
50-State Legal

CCCUO 
Closed course competition use only

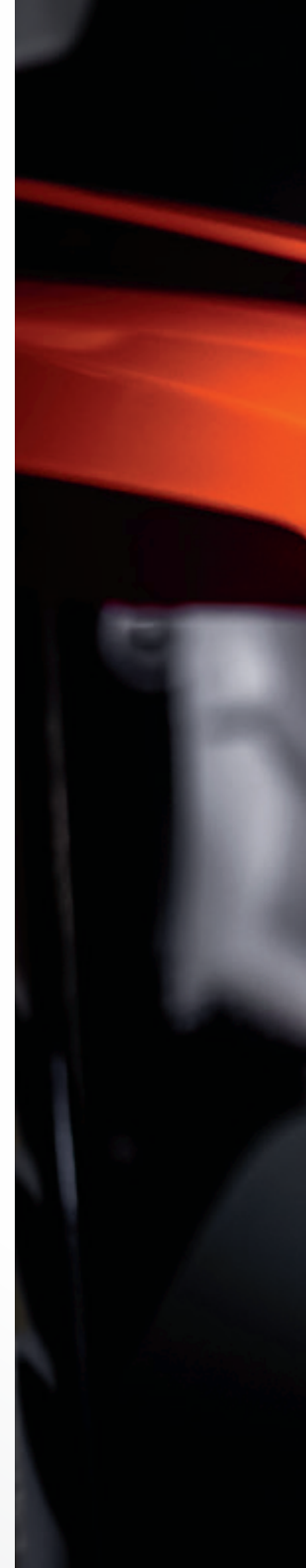
MAP 
There is specially developed engine software (mapping) for products marked with the MAP symbol. This closed course competition use only mapping has been designed by our engine development department for optimum performance as well as durability of the components and can only be uploaded by an authorized KTM dealer.

DISCLAIMER

All of the items in this catalog have been designed/developed especially for the needs and demands of offroad motorsport. The items in this catalog have been developed and are intended for closed course competition use and racing applications only. Any other usage violates U.S. Federal and/or state law and could be subject to fines. Only items explicitly designated to be "50 State Legal" have been developed and are approved to meet U.S. Federal and California emission requirements for highway/on-road use.

INTENSIFY YOUR RIDE

For those with the need for extra performance, a desire for comfort or who simply want a bike personalized to suit their needs, KTM PowerParts are the perfect solution for enhancing the ride. With a wide array of KTM PowerParts to choose from, boosting your bike's performance, aesthetics or ergonomics couldn't possibly be any simpler – leaving you feeling confidently **READY TO RACE** every time the gate drops.





THE FACTORY CYLINDER HEADS WITH VARIABLE COMBUSTION CHAMBER ARE A MUST-HAVE FOR ANY RACER AND OFFER THE FOLLOWING PROPERTIES:

- Cylinder head is separate from combustion chamber
- Easy modification of the engine characteristics by changing the combustion chamber insert (e.g., from motocross to an offroad setting)
- No need to replace the entire cylinder head in case of wear; only the insert needs to be replaced
- The aluminum alloys used provide improved heat dissipation and thus improve performance gains

TO BOOST YOUR MOTORCYCLE'S PERFORMANCE EVEN FURTHER, WE RECOMMEND A COMBINATION OF THE FACTORY CYLINDER HEADS WITH THE FOLLOWING PARTS:

- Factory spark plug
- Factory CDI unit
- Factory exhaust system

IMPORTANT:

The carburetor jetting must be adjusted to the selected combustion chamber insert and your vehicle model year (e.g. selected combustion chamber insert = Motocross type; vehicle = 250 XC-W model year 16; carburetor jetting to be selected = 250 SX model year 16). The carburetor jettings for models 250 and 300 are identical. When using the "EXTREME" combustion chamber insert, always select the SX carburetor jetting for your vehicle's model year. More information on carburetor jetting can be obtained from your authorized KTM dealer.

SXS.13.125.044

125/144/150 SX/XC 07–15

SXS.13.250.044

250 SX/XC/XC-W 07–16

SXS.13.300.044

300 XC/XC-W 08–16



FACTORY CYLINDER HEAD WITH VARIABLE COMBUSTION CHAMBER

Without combustion chamber insert.

SXS.13.125.081

125 SX 07–15

SXS.13.144.081

144/150 SX/XC 07–15

SXS.13.250.081

250 SX/XC/XC-W 07–16

SXS.13.300.081

300 XC/XC-W 08–16



FACTORY CYLINDER HEAD COMBUSTION CHAMBER INSERT EXTREME

This combustion chamber insert is made from a specially developed alloy. The excellent conductivity of this alloy increases the performance of your engine in extreme operations, especially if your engine has to deliver full performance (e.g. with high ambient temperatures, sandy track conditions or other extreme situations).

SXS.13.125.061

125 SX 07–15

SXS.13.144.061

144/150 SX/XC 07–15

SXS.13.250.061

250 SX/XC/XC-W 07–16

SXS.13.300.061

300 XC/XC-W 08–16

**FACTORY CYLINDER HEAD COMBUSTION CHAMBER INSERT MX**

Combustion chamber insert manufactured from the highest grade of aluminum, with a standard combustion chamber shape.

SXS.13.250.071

250 SX/XC/XC-W 07–16

SXS.13.300.071

300 XC/XC-W 08–16

FACTORY CYLINDER HEAD COMBUSTION CHAMBER INSERT ENDURO

Combustion chamber insert manufactured from the highest grade of aluminum, with an enduro tailored combustion chamber shape.

SXS.13.250.091

250 SX/XC/XC-W 07–16

FACTORY CYLINDER HEAD COMBUSTION CHAMBER INSERT XC

Combustion chamber insert manufactured from the highest grade of aluminum for more torque.

SXS.16.125.081

125 SX 16–18

SXS.16.150.081

150 SX 16–18

150 XC-W 17–18

**FACTORY CYLINDER HEAD COMBUSTION CHAMBER INSERT EXTREME**

This combustion chamber insert is made from a specially developed alloy. The excellent conductivity of this alloy increases the performance of your engine in extreme operations, especially if your engine has to deliver full performance (e.g. with high ambient temperatures, sandy track conditions or other extreme situations).



SXS.16.125.007

125 SX 16–18

FACTORY CYLINDER KIT

This complete cylinder kit consists of individual components specially machined to minimum tolerances. This provides more power throughout the entire rev range. Piston included.



SXS.16.150.000

125 SX 16–18

150 FACTORY KIT

All the parts needed for the conversion of your 125 SX to a 150 SX; so that you're one step ahead of your competitors.



SXS.16.125.907 I

125 SX 16–18
(GROUP 1 CYLINDER ONLY)

SXS.16.150.907 I

150 SX 16–18
150 XC-W 17–18
(GROUP 1 CYLINDER ONLY)

FACTORY PISTON

Specially developed, high-performance piston with the following properties:

- Higher performance across the entire power band
- Higher peak power
- Optimized friction
- Only one piston ring
- Special surface coating

Due to the higher load on the engine, the new service intervals specified in your KTM Owner's Manual must be complied with.



SXS.17.300.000

250 SX 18

SXS.14.300.000

250 SX 14-16

SXS.12.300.000

250 SX 07-13

300 FACTORY KIT

All the parts required for converting your 250 SX to a 300 SX for the open class. More information on the carburetor jetting can be obtained from your authorized KTM dealer.

SXS.17.300.500

250 XC/XC-W 17-18

SXS.12.300.100

250 XC/XC-W 07-16

300 FACTORY KIT

All the parts required for converting your 250 XC/XC-W to a 300 XC/XC-W for the open class. More information on the carburetor jetting can be obtained from your authorized KTM dealer (please check with your authorized dealer for fitments on TPI models).



SXS.15.125.390

125 SX 07-15

FACTORY CDI UNIT

The ignition curve of the Factory digital box is specially adapted to the series cylinder head (in conjunction with the use of at least 98 octane fuel).

The advantages:

- Higher peak power and speed
- More torque in the medium speed range
- Improved response
- The best possible performance

We recommend use in combination with the FMF factory exhaust system and Factory spark plug for maximum performance.

SXS.02.125.071

125 SX 00-18

144/150 SX 07-18

FACTORY SPARK PLUG

This spark plug is designed for improved performance and reliability with the following additional benefits:

- Iridium center electrode tip
- Reinforced earth electrode (against vibration and breakage)
- Special design with improved anti-rusting properties

We recommend use of the Factory spark plug when fitting power-boosting parts, such as Factory cylinder heads, factory exhaust systems or the SXS CDI unit.



| | |
|-----------------|-------|
| 250 SX | 17-18 |
| 250/300 XC/XC-W | 17-18 |

250/350 EXC-F 17-18

| | |
|---------------|-------|
| 450 SX-F | 16-18 |
| 450/500 EXC-F | 17-18 |

250/300 XC-W 13-16

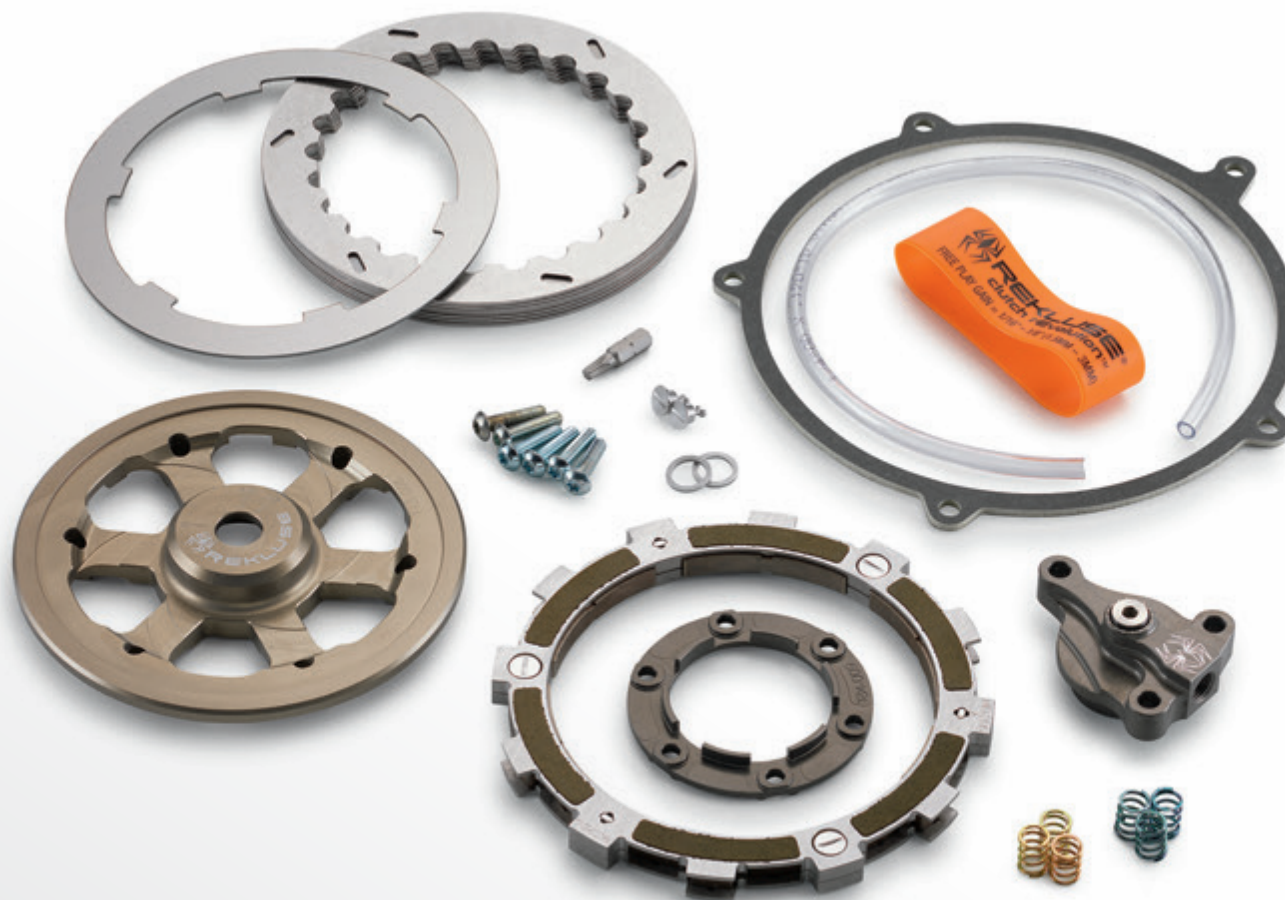
| | |
|---------------|-------|
| 250 XCF-W | 14-16 |
| 350 XCF-W/EXC | 13-16 |

450/500 XC-W/EXC 12-15

450/500 XC-W/EXC 16

The latest generation of the Rekluse automatic clutch featuring EXP technology.
This automatic clutch utilizes the stock basket and hub for a simple and quick installation.

- Easy external adjustments made with the included slave cylinder
- No stalling in critical situations such as braking, descents and low-speed riding
- Improved traction on slippery/rocky surfaces
- More relaxed, fatigue-free riding
- Not required to use clutch lever, although it is still possible
- Special left hand brake lever kit (781.13.900.100) available for even more control
- Tested and approved by our Factory Offroad Team riders





781.13.900.100

| | |
|-----------------|-------|
| 250 SX | 04-18 |
| 250/300 XC/XC-W | 04-18 |
| 250 XCF-W | 07-18 |
| 350 XCF-W | 13-18 |
| 450 SX-F | 16-18 |
| 450 XCF-W | 08-18 |

LEFT HAND BRAKE KIT

For use with the auto-clutch. Allows braking of the rear wheel with the left hand, hence providing additional control in critical situations (e.g. steep downhill and right hand turns).



792.12.945.044

350 EXC-F 17-18

794.12.945.044

450/500 EXC-F 17-18

KICKSTART KIT

All the parts required for adding a kickstarter to your motorcycle. The kickstart kit serves as an indispensable back up when your battery becomes drained on the trail.

790.11.955.044

SX-F 16–18
EXC-F/XC-F 18

BATTERY COMPARTMENT

This battery compartment allows you to install extra powerful 5S lithium-ion batteries in your bike.



773.11.953.000

LITHIUM ION BATTERY 5S

The following benefits are the mark of our lithium-ion batteries:

- 2.2 lbs. lighter than the standard battery (773.11.053.000)
 - 3.5 lbs. lighter than the standard battery (585.11.053.00)
 - Unbeatable cost/weight saving ratio
 - Mountable in any position, as it does not contain acid
- Technical data:
- 12 V maintenance-free lithium-ion battery
 - Capacity 1.2 Ah
 - Recommended charging current – 2.5 amps
 - Maximum charge current for fast charging – 12 amps
 - Fast charge with high charging current (up to 90% in 6 min)
 - Very low self-discharge (max. 5% per month)
 - Balanced discharge/charge of all cells through balancer
 - Contains no heavy metals

When mounting on SX-F models from 2016 and later, the battery compartment (790.11.955.044) is also required.



EXHAUST

TWO-STROKE





556.05.981.000 

250 SX 17–18
250/300 XC/XC-W 17–18

AKRAPOVIČ "SLIP-ON LINE"

This Akrapovič slip-on silencer offers an uncompromising race look with substantial weight savings.

The benefits include:

- More power and torque
- Identical look to our Factory Team
- Manufactured from high-grade titanium
- Permanently welded attachment points

CLOSED COURSE / COMPETITION USE ONLY!



516.05.979.000 

125/150 SX 16–18
150 XC-W 17–18

AKRAPOVIČ "SLIP-ON LINE"

This Akrapovič slip-on silencer offers more power and torque, uncompromising race look and a substantial savings in weight.

The benefits:

- More power and torque
- Identical look to our Factory Team
- Manufactured from high-grade titanium, with carbon fiber silencer cap
- Nano coated to prevent oxidation and baked on dirt
- Fixed welded attachment

CLOSED COURSE / COMPETITION USE ONLY!

551.05.981.000 

250 SX 11–16
200/250/300 XC/XC-W 11–16

AKRAPOVIČ "SLIP-ON LINE"

Akrapovič silencer – that means years of racing experience, perfect material selection and a sporty design.

The benefits:

- Minimum weight
- Maximum performance
- Perfectly distributed torque curve
- Long service life

CLOSED COURSE / COMPETITION USE ONLY!



503.05.981.000 

125 SX 04–15
150 SX 09–15

AKRAPOVIČ "SLIP-ON LINE"

CLOSED COURSE / COMPETITION USE ONLY!





504.05.907.000 

| | |
|------------|-------|
| 125/150 SX | 16–18 |
| 150 XC-W | 17–18 |

SXS.11.144.500 

| | |
|--------|-------|
| 125 SX | 04–15 |
| 150 SX | 09–15 |

FMF FACTORY PIPE

- Made from high quality, extra strong and durable sheet steel
- Nickel-plated, stainless, polished surface
- Complete with O-rings
- Recommended in combination with an FMF silencer for a perfectly tuned and performance optimized system

CLOSED COURSE / COMPETITION USE ONLY!



554.05.907.000 

| | |
|-----------------|-------|
| 250 SX | 17–18 |
| 250/300 XC/XC-W | 17–18 |

SXS.11.300.500 

| | |
|--------------|-------|
| 250 SX | 11–16 |
| 250/300 XC | 11–16 |
| 250/300 XC-W | 11–16 |

SXS.11.200.500 

| | |
|----------|-------|
| 200 XC-W | 11–16 |
|----------|-------|

FMF FACTORY PIPE

- Made from high quality, extra strong and durable sheet steel
- Nickel-plated, stainless, polished surface
- Complete with O-rings
- Recommended in combination with an FMF silencer for a perfectly tuned and performance optimized system

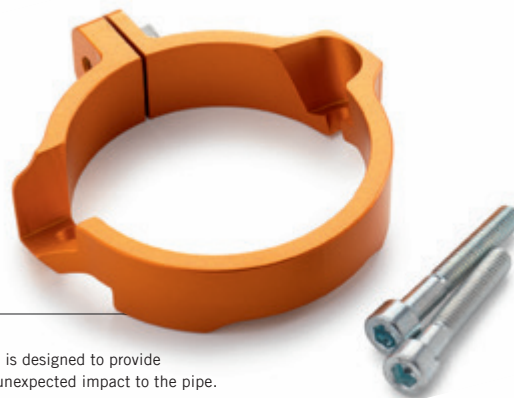
CLOSED COURSE / COMPETITION USE ONLY!

554.37.994.044

250/300 SX/XC/XC-W 17-18

EXHAUST FLANGE GUARD

For extreme riding and racing! This exhaust flange guard is designed to provide added strength to the cylinder flange in the event of an unexpected impact to the pipe.



516.05.907.500 

125/150 SX 16-18
150 XC-W 17-18

FACTORY PIPE

- Improved torque curve for optimal rideability
- Minimum weight and maximum performance
- Made from robust steel
- Untreated surface for an original factory look
- Rich, unmistakable sound
- Recommended in combination with an FMF silencer for a perfectly tuned and performance-optimized system

CLOSED COURSE / COMPETITION USE ONLY!



554.05.907.500 

250 SX 17-18
250/300 XC/XC-W 17-18

FACTORY PIPE

- Improved torque curve for optimal rideability
- Minimum weight and maximum performance
- Made from robust steel
- Untreated surface for an original factory look
- Rich, unmistakable sound
- Recommended in combination with an FMF silencer for a perfectly tuned and performance-optimized system

CLOSED COURSE / COMPETITION USE ONLY!





554.05.907.001  **NEW**

250 SX 17-18
250/300 XC/XC-W 17-18

FMF FACTORY FATTY PIPE

- Made from high quality, extra strong and durable steel
- Untreated surface for an unadulterated factory look
- Broader, smoother powerband
- Complete with O-rings
- Recommended in combination with an FMF silencer for a perfectly tuned and performance optimized system

CLOSED COURSE / COMPETITION USE ONLY!







554.05.979.000 

250 SX 17-18
250/300 XC/XC-W 17-18

UPP.16.05.070 

125/150 SX/XC/XC-W 16-18

UPP.15.05.060 

200/250/300 SX/XC/XC-W 11-16

FMF POWERCORE 2.1 SILENCER

- Manufactured from special high-grade titanium, with a blue anodized outer sleeve
- Titanium silencer cap
- Lightweight
- Simple fitting
- Easy to install
- Recommended in combination with a Factory pipe for a perfectly tuned and performance optimized system

CLOSED COURSE / COMPETITION USE ONLY!



554.05.979.001

250 SX 17-18
250/300 XC/XC-W 17-18

FMF POWERCORE 2.1 SILENCER

- Outer sleeve made from the finest aluminum
- Full sound despite low noise level
- Lightweight
- Simple fitting
- Easy to install
- Recommended in combination with a Factory pipe for a perfectly tuned and performance optimized system

CLOSED COURSE / COMPETITION USE ONLY!



554.05.981.001

250 SX 17-18
250/300 XC/XC-W 17-18

UPP.15.05.061

200/250/300 SX/XC/XC-W 11-16

FMF TURBINECORE 2.1 SILENCER

- The FMF Turbinecore 2.1 silencer utilizes a new shape inspired from the 4.1 system, along with an exclusive FMF "Turbine Dampening System."
- U.S. Forest Service compliant spark arrestor
 - The straight through design of the spark arrestor canister and the performance flow stainless steel end cap ensures strength, durability and most importantly, track and trail proven unrestricted power
 - The FMF Turbinecore 2.1 is the #1 spark arrestor in the world

CLOSED COURSE / COMPETITION USE ONLY!





504.05.979.000 

125/150 SX 16–18
150 XC-W 17–18

SXS.11.250.550 

250 SX 11–16

FMF POWERCORE 2 SILENCER

- Outer sleeve manufactured from high-grade aluminum
- Lightweight
- Simple fitting
- Easy to install
- Recommended in combination with a Factory pipe for a perfectly tuned and performance optimized system

CLOSED COURSE / COMPETITION USE ONLY!



SXS.11.150.550 

125 SX 04–15
150 SX 09–15

FMF POWERCORE 2 SILENCER

- Outer sleeve manufactured from high-grade aluminum
- Lightweight
- Simple fitting
- Easy to install
- Recommended in combination with a Factory pipe for a perfectly tuned and performance optimized system

CLOSED COURSE / COMPETITION USE ONLY!



U691.0029 

125 SX 04–15
150 SX/XC 09–15

U691.0030 

200/250/300 SX/XC/XC-W 11–16

FMF TURBINECORE 2 SILENCER

U.S. Forest Service compliant spark arrestor.
Replacement decal available (U691.0070).

CLOSED COURSE / COMPETITION USE ONLY!



504.05.979.500 

| | |
|------------|-------|
| 125/150 SX | 16-18 |
| 150 XC-W | 17-18 |

FACTORY SILENCER

- Performance boost over the entire rpm range
- Made from high-grade aluminum
- Lightweight
- Simple fitting, easy to install
- Recommended in combination with a Factory pipe for a perfectly tuned and performance optimized system

CLOSED COURSE / COMPETITION USE ONLY!



YOUR DESIRE IS OUR OBJECTIVE: More power and torque, uncompromising race looks and a substantial savings in weight.

THE ANSWER: Akrapovič "EVOLUTION LINE"

- More power and torque
- Identical look to our Factory Team
- Manufactured entirely of high-grade titanium

For the 250 SX-F emphasis in power delivery was placed on an increase in power and torque in the upper speed range. Due to the increase in output in the upper speed range a modified power and torque results in the lower speed range. This means a slightly later, but as a result more spontaneous onset of full engine power from an engine speed of 6000 rev/min. For the 450 SX-F, including specially tuned mapping (available from your KTM authorized dealer).

CLOSED COURSE / COMPETITION USE ONLY!

790.05.900.044 

250 SX-F/XC-F 16–18

792.05.900.144 

350 SX-F/XC-F 16–18

261.05.900.044  **MAP**

450 SX-F/XC-F 16–18

AKRAPOVIČ "EVOLUTION LINE"

CLOSED COURSE / COMPETITION USE ONLY!



790.05.979.100 

250 SX-F/XC-F 16–18

794.05.979.100 

350/450 SX-F/XC-F 16–18

AKRAPOVIČ "SLIP-ON LINE"

This Akrapovič slip-on main silencer offers more power and torque, an uncompromising race look, and a substantial savings in weight.

Benefits include:

- Improved torque curve, combined with easily rideable peak power
- Made from high-grade titanium
- Weight savings: approx. 1 lb.
- Nano coated against oxidation and baked on dirt
- Fixed welded attachments
- Tuned to comply with current AMA Amateur noise regulations

CLOSED COURSE / COMPETITION USE ONLY!







790.05.079.500 

250/350/450 SX-F/XC-F 16–18

UPP.15.05.030 

250/350/450/500 SX-F/XC-F 07–15

250/350/450/500/530 XCF-W 08–16

FMF FACTORY 4.1 RCT MUFFLER

- Manufactured from special high-grade titanium, with a blue anodized outer sleeve
- Titanium silencer cap
- More power and torque
- Significant savings in weight
- Can also be fitted in combination with the original manifold
- We recommend use in conjunction with an FMF Megabomb header for a perfectly tuned and performance optimized system

CLOSED COURSE / COMPETITION USE ONLY!



796.05.981.000 

250/350/450 SX-F/XC-F 16–18

FMF POWERCORE 4 MUFFLER

This FMF slip-on main silencer is made from the highest quality of materials, and not only stands out from the standard silencer with its appearance, but has also been optimally adapted in terms of torque and power to the power characteristics of the series engine. Installation is only possible in combination with the original header.

CLOSED COURSE / COMPETITION USE ONLY!



UPP.15.05.040

250/350/450/500 SX-F/XC-F 07–15
250/350/450/500/530 XCF-W 08–16

FMF FACTORY 4.1 RCT MUFFLER

Exclusive muffler for KTM PowerParts used by our Factory Offroad Team.

The Factory 4.1 RCT muffler incorporates the latest in FMF Resonance Chamber Technology™ both internally and externally. In addition, we achieve a shorter overall length that is less susceptible to crash damage and complementary to our Factory Forward Engineering - moving the muffler closer to the motor to centralize mass. The Factory 4.1 RCT is constructed from only aerospace grade materials that meet our exacting specifications and is manufactured 100% at FMF's Southern California factory.

- Natural titanium muffler with titanium end cap
- New RTS (Rapid Tuning System)
- Significant savings in weight
- FMF uses the highest quality proprietary blend of alloy grade titanium made especially to our standards.

Can be used with FMF or stock OEM header.

CLOSED COURSE/COMPETITION USE ONLY!



SXS.13.450.513

250/350/450/505 SX-F/XC-F 07–15
250/350/400/450/
500/530 XC-W 08–16

FMF POWERCORE 4 MUFFLER

A perfect introduction to the world of performance enhancement! The FMF slip-on silencer has been developed in collaboration with FMF and adapted precisely to the engine characteristics of your KTM – the only way to ensure maximum power with ultimate rideability.

The benefits:

- Increased performance
 - Manufactured from the highest grade of materials
- Can only be fitted in combination with the original header.
CLOSED COURSE / COMPETITION USE ONLY!

790.05.907.500

250/350 SX-F/XC-F 16–18

TITANIUM 

UPP.15.050.22

450 SX-F/XC-F 13–15

STAINLESS 

UPP.15.050.14

450 SX-F/XC-F 16–18

TITANIUM 

UPP.15.050.21

350 SX-F/XC-F 13–15

STAINLESS 

UPP.15.050.12

450 SX-F/XC-F 13–15

TITANIUM 

UPP.15.050.20

250 SX-F/XC-F 13–15

STAINLESS 

UPP.15.050.11

350 SX-F/XC-F 13–15

TITANIUM 

UPP.15.050.10

250 SX-F/XC-F 13–15

TITANIUM 

FMF MEGABOMB HEADER

- Increased performance
- Made of titanium
- Premium machining

Can only be fitted in combination with an FMF Factory 4.1 RCT muffler.

CLOSED COURSE / COMPETITION USE ONLY!



DEVELOPED BY AKRAPOVIČ IN COLLABORATION WITH THE KTM FACTORY TEAM:

The highest quality factory header you can buy for your motorcycle. Top titanium quality and maximum weight reduction are the secrets behind the outstanding successes of the KTM Factory Team.

THE BENEFITS:

- Increase in performance throughout the rev range
- Made from high quality titanium
- Highest quality workmanship
- Optimum header routing

An expansion chamber is also used on selected factory headers, contributing to optimum torque distribution and noise reduction.



774.05.907.000 TITANIUM 

250 XCF-W 14–16
350 XCF-W 12–16

AKRAPOVIČ “EVOLUTION LINE” HEADER

Can only be fitted in combination with an Akrapovič “Slip-on Line”.
CLOSED COURSE / COMPETITION USE ONLY!



781.05.909.000 TITANIUM 

450/500 XCF-W 12–16

AKRAPOVIČ “EVOLUTION LINE” HEADER

Can only be fitted in combination with an Akrapovič “Slip-on Line”.
CLOSED COURSE / COMPETITION USE ONLY!



796.05.979.000 TITANIUM 

250/350/450/500 EXC-F 17–18

AKRAPOVIČ “SLIP-ON LINE”

775.05.981.000 TITANIUM 

250/350 XCF-W 14–16

787.05.981.000 TITANIUM 

450/500 XC-W 14–16

AKRAPOVIČ “SLIP-ON LINE”

This Akrapovič slip-on main silencer offers more power and torque, uncompromising race looks and a substantial savings in weight. The benefits:

- Improved torque curve combined with easily rideable peak power
- Made from high-grade titanium
- Unbeatably low weight
- Nano coated against oxidation and baked on dirt
- Fixed welded attachments
- Tuned to comply with the currently valid AMA Amateur noise regulations

With removable noise reduction insert. Can also be fitted in combination with the original header. We recommend use in combination with an Akrapovič “Evolution Line” header for a further increase in rideability and power development.
CLOSED COURSE / COMPETITION USE ONLY!



781.05.981.100 TITANIUM

250/350/450/505 SX-F 07–12

250/350/400/450/500/530 XCF-W 08–16

781.05.982.000 TITANIUM

350/500 EXC 12–16

AKRAPOVIČ "SLIP-ON LINE"

This Akrapovič slip-on main silencer has been conceived especially for offroad riders who are looking for the best available aftermarket exhaust system, and who know how optimum power development can best be achieved on the offroad course or in offroad use. The hexagonal silencer is a perfect match for the sharp lines of the KTM. Installation only possible with the original header. Can also be fitted in combination with the Akrapovič "Evolution Line" headers on 350/400/450/500/530 XCF-W models.

SXS.10.450.512 TITANIUM

250/350/450/505/525 SX-F/XC-F 07–15

250/350/400/450/

500/530 XCF-W 08–16

AKRAPOVIČ "SLIP-ON LINE"

This Akrapovič slip-on main silencer has been developed in collaboration with Akrapovič for the very specific requirements of offroad and motocross use.

The benefits:

- Improved torque curve combined with very rideable peak performance
- More sensitive throttle response and resulting improved traction
- Durability suitable for extreme offroad use
- Made from high grade titanium
- Fixed welded brackets
- Reinforced titanium end cap (Factory Team standard)
- Tuned for compliance with the latest applicable noise regulations

With removable noise reduction insert. Can only be fitted in combination with original header.

CLOSED COURSE / COMPETITION USE ONLY!





DO YOU KNOW ABOUT THE SPECIAL PROPERTIES OF CARBON?

- Extremely light: about 80 % lighter than steel with the same load-bearing capacity
- Very stable: 4 times more resilient than aluminum
- Ultimate stiffness and strength
- Free from corrosion
- High continuous temperature resistance
- Low thermal expansion
- Provides a factory look

Personalize your KTM with carbon components from KTM PowerParts – they save weight and look great!



SXS.07.250.535

| | |
|-----------------------|-------|
| 250 SX-F/XC-F | 07–12 |
| 250 XCF-W | 07–13 |
| 450/500/530 XCF-W/EXC | 08–16 |
| 350 EXC-F | 17–18 |

SXS.10.450.535

FOR FACTORY HEADER SXS.10.450.550

| | |
|---------------|-------|
| 350 SX-F/XC-F | 11–12 |
| 350 XCF-W/EXC | 12–16 |
| 250 XCF-W/EXC | 14–16 |

HEAT PROTECTION

Suitable for fitting onto factory or original headers.
Can only be fitted to headers without an expansion chamber.

U691.2023

| | |
|-----------------------|-------|
| 250/350/450 SX-F/XC-F | 11–15 |
| 250/350/450/500 XCF-W | 12–16 |

HEAT PROTECTION

Give your pants and boots some extra protection from the hot exhaust pipe. This durable aluminum exhaust guard bolts right on with only a quick modification to the stock plastic guard. Great additional protection for those riders that squeeze the bike tightly with their knees.



554.05.994.000

FOR EXHAUST PIPE 554.05.007.000

504.05.994.000

FOR 125 EXHAUST PIPE 504.05.007.100

503.05.994.000

FOR 125 EXHAUST PIPE 503.05.107.000

551.05.994.100

FOR EXHAUST PIPE
548.05.107.000 AND SXS.11.300.500

U690.7832

FOR 250/300 EXHAUST PIPE 548.05.009.200,
548.05.007.100, 548.05.007.300

U690.9867

FOR 200 EXHAUST PIPE 523.05.008.600

PIPE GUARD

The featherlight carbon pipe guard provides maximum service life to your exhaust. Ideal protection against roost, branches, etc.







790.02.924.100

| | |
|------------|-------|
| SX/XC | 17-18 |
| SX-F/XC-F | 16-18 |
| XC-W/EXC-F | 17-18 |

LOCK-ON GRIP SET

- Grip replacement made easy
- Left grip with aluminum clamping ring for fixing onto the handlebar
- Laborious process of gluing and securing grips with safety wire no longer necessary

790.02.923.000

NEW

| | |
|------------|-------|
| SX/XC | 17-18 |
| SX-F/XC-F | 16-18 |
| XC-W/EXC-F | 17-18 |

LOCK-ON OPEN END GRIP SET

- Grip replacement made easy
- Grips are locked onto the handlebar by a clamp
- Left grip with aluminum clamping ring for fixing onto the handlebar
- Laborious process of gluing and securing grips with safety wire no longer necessary
- With an open grip end for mounting closed hand guards

781.02.924.000

| | |
|------------------------|-------|
| 125/150/250 SX/XC/XC-W | 04-16 |
| SX-F/XC-F | 06-15 |
| XC-F-W/EXC | 06-16 |

LOCK-ON GRIP SET

- Grip replacement made easy
- Left grip with aluminum clamping ring for fixing onto the handlebar
- Laborious process of gluing and securing grips with safety wire no longer necessary





790.02.013.100

| | |
|------------|-------|
| SX/XC | 17-18 |
| SX-F/XC-F | 16-18 |
| XC-W/EXC-F | 17-18 |

THROTTLE TUBE

This gives you the option of using traditional grips on models that come standard with Lock-On grips.

548.02.021.100

HALF-WAFFLE MEDIUM GRIP SET

548.02.021.000

HALF-WAFFLE SOFT GRIP SET

The special half-waffle grip has been developed to meet the demands and preferences of our Factory riders, with the clear objectives: comfort AND safety - because no calluses on the palms and secure grip mean less stress when riding.

The benefits:

- Ergonomic; contour matched to the shape of the hand for maximum comfort
- Small "half-waffle" ribs on the rear for a secure grip
- Made from two materials with different grades of hardness
- Available in two versions (soft and medium)
- Three areas for securing safety wire



630.02.021.100

DUAL COMPOUND GRIP SET

The KTM 2K (2K = 2 different materials) grip combines the durability of KTM standard grips and the comfort of the soft KTM grips.

- Harder orange material on the inside and at the grip ends for a long service life
- Softer black material on the outside, where the hand lies on the grip, for increased comfort



630.02.021.200

DUAL COMPOUND OPEN END GRIP SET

Same as the dual compound grip set (630.02.021.100), but with open grip ends for closed handguards or bar ends.



781.12.964.000

SX-F/XC-F/XC-W/EXC-F

GRIP HEATERS

Ensures warm hands, even in bad weather. Can only be fitted by an authorized KTM dealer. We recommend the use of an auxiliary wiring harness (777.11.979.000) for installation.

U695.1716

GRIP DONUT SET

Optimum protection against thumb blisters with these coated neoprene rings. Simply slide onto the grips.



781.02.922.000

MUD GRIPS

The mud grips are simply pulled over the existing grips and provide a secure hold on the grip in extremely muddy conditions, thanks to their special material mix.

551.02.925.000

TWO-STROKE 04–16

THROTTLE CAM SYSTEM

The throttle cam system includes three differently profiled cams, each with a different gear ratio. This allows the throttle response characteristics to be varied in accordance with personal requirements.



787.12.916.000

SX/XC 13–18
XC-W/EXC 14–18

FRONT STRAP

- High-strength nylon strap
- Indispensable for use on extreme terrain
- Attaches to fork tubes



790.12.917.000

125/150 SX/XC 16–18
250 SX 17–18
SX-F/XC-F 16–18
XC-W/EXC 17–18

781.12.917.000

SX/XC 11–15
XC-W/EXC 12–16

GRIP HANDLE

- High-strength aluminum grip
- Indispensable for use on extreme terrain
- Makes it easy to get your bike upright
- Attaches to silencer bracket on the subframe



796.12.917.000

125/150 SX 16–18
250 SX/XC 17–18
SX-F/XC-F 16–18
XC-W/EXC-F 17–18

787.12.917.000

125/150 SX 04–15
250 SX/XC 04–16
SX-F/XC-F 04–15
XC-W/EXC 06–16

REAR STRAP

- High-strength nylon strap
- Indispensable for use on extreme terrain
- Makes it easy to get your bike upright
- Attaches to subframe

**EVER HAD TO GIVE UP DURING THE RACE BECAUSE OF
A BROKEN CLUTCH OR BRAKE LEVER?**

Minimize the possibility of that happening with these levers
that are designed to fold away upon contact with the ground.



787.13.902.044/04 BREMBO®
SX/XC/SX-F/XC-F/XC-W/EXC 14–18

FLEX BRAKE LEVER

Suitable for all hydraulic Brembo® brake systems.



787.02.931.044/04 BREMBO®
SX/XC/SX-F/XC-F/XC-W/EXC 06–18

FLEX CLUTCH LEVER

Suitable for all hydraulic Brembo® clutch fittings.





HANDLEBAR + INSTRUMENTS / ELECTRIC

LEVER



DO YOU KNOW ABOUT THE BENEFITS OF FORGED BRAKE AND CLUTCH LEVERS FROM KTM POWERPARTS?

- Manufactured from high-strength aluminum, forged and then CNC-machined
- This extensive production process provides a long service life, and a precise fit
- Ergonomically perfected shape, the result of years of racing experience
- Predefined breaking point
- Orange anodized



787.13.992.044/04 BREMBO®
SX/XC/SX-F/XC-F/XC-W/EXC 14–18

BRAKE LEVER

Suitable for all hydraulic Brembo® brake systems.



780.13.902.000/04 BREMBO®
SX/XC/SX-F/XC-F/XC-W/EXC –13

BRAKE LEVER

Suitable for hydraulic Brembo® brake systems.



780.02.931.100/04 MAGURA
SX/XC/SX-F/XC-F/XC-W/EXC

CLUTCH LEVER

Suitable for all hydraulic Magura clutch fittings where the Flex lever is fitted as standard.



780.02.931.200/04 BREMBO®
SX/XC/SX-F/XC-F/XC-W/EXC

CLUTCH LEVER

Suitable for all hydraulic Brembo® clutch mountings.



780.02.931.000/04 MAGURA
SX/XC/SX-F/XC-F/XC-W/EXC –13

CLUTCH LEVER

Suitable for all hydraulic Magura clutch mountings up to model year 2013.

HIGH VERSION

603.02.179.000/EB 603.02.179.100/28 603.02.179.100/30 

SX/XC/XC-W/EXC

HANDGUARD KIT

The closed, two-component plastic handguards developed by KTM feature a black center section that offers maximum strength for optimum protection. The colorful upper and lower parts are highly flexible and endure even the roughest of treatment without complaint. Available in two different heights.



LOW VERSION

780.02.079.100/04 780.02.079.200/28 780.02.079.200/30 

SX/XC/XC-W/EXC

HANDGUARD KIT

765.02.979.000/04 765.02.979.000/28 765.02.979.000/30 

SX/XC/XC-W/EXC

HANDGUARD KIT

These handguards developed especially for KTM bikes are an indispensable companion for serious offroad and supermoto use. The wide, spacious design ensures excellent mobility and maximum protection against impact, roost, branches, etc. Cannot be fitted with Renthal Twinwall handlebar.



THANKS TO SPLITTING THE SURFACES, THESE OPEN, VERY LIGHT KTM (MX) HANDGUARDS ENSURE AN UNCOMPROMISING RACE LOOK AND MAXIMUM PROTECTION.

Featuring two-component injection moulding technology:

- Black center section = maximum strength for optimum protection
- Colored upper and lower parts = highly flexible for enduring the roughest of treatment

The choice is yours: attach directly to the handlebar with a plastic bracket or directly to the lever mounting with a special adaptor. Cannot be fitted with Renthal Twinwall handlebar.



777.02.979.000/04 ■

777.02.979.000/28 ■

SX/XC/XC-W/EXC

HANDGUARD KIT

Mounted directly on the handlebar with a plastic bracket.



770.02.079.000/04 ■

SX/XC/XC-W/EXC 00–08
250/300 SX/XC/XC-W/EXC 09–16
250 XCF-W 09–12
400/450/500/530 XC-W/EXC 09–15

HANDGUARD KIT

Thanks to splitting the surfaces, these open, very light KTM handguards ensure an uncompromising race look in the angular KTM design. Featuring two-component injection moulding technology:

- Black mid-section = maximum strength for optimum protection
- Orange top and bottom parts = highly flexible, enduring even the roughest of treatment



796.02.979.044 **NEW**

XC/XC-F/XC-W/EXC-F 18

WRAP-AROUND HANDGUARD KIT

- Made of sturdy plastic
- Converts the originally open handguards into a closed version
- Also compatible with handguards (796.02.979.000.EB / 28 / 30 and 721.02.979.000.EB / 28 / 30)



796.02.979.000/EB ■

796.02.979.000/28 ■

796.02.979.000/30 ■

SX/XC/XC-W/EXC 14–18

HANDGUARD KIT

Attached directly at the levers with a special mounting.

781.02.979.100/04 ■

781.02.979.100/28 ■

781.02.979.100/30 ■

125/150 SX/XC 09–13
250/300 SX/XC/XC-W 06–13
250/350 SX-F/XC-F 11–13
450 SX-F/XC-F 13
200 XC-W 09–13
250/350/400/450/500/530 XCF-W/EXC 08–13

HANDGUARD KIT

Attached directly at the levers with a special mounting.



U695.1375

RENTHAL/NEKEN

U695.1406

MAGURA

PROBEND HANDGUARD KIT

The KTM Pro Bend handguards feature rugged aluminum bars that are shaped to give your hands and levers plenty of space. In addition, they have C shaped mounting brackets for easy routing of cables and hoses. The high impact plastic hand shields have a sleek profile that offers the perfect balance of protection and style. Note: Some KTM models now come stock with tapered Neken handlebar (780.02.001.000 / 17), in this case use the (U691.1023) handguard set for a proper fit.

U691.0026 ■**REPLACEMENT SHIELD FOR PROBEND****UPP.15.02.010****CENTER REACH MOUNT PROBEND HANDGUARDS**

By mounting our handguards to the lower portion of the handlebar, we have increased clamping pressure, eliminated application variables and provided unparalleled clearance for cable routing. By doing so, we have made it much easier to buy handguards. Replacement shields: (UPP.15.02.011) not compatible with EXC models.





USED BY OUR
FACTORY TEAM

UPP.15.02.044

X-FORCE HANDGUARDS

Exclusive Team Edition color only available through KTM PowerParts! The X-Force is the newest addition to Acerbis' offroad handguard line-up. The X-Force, tested by KTM Factory Rider Ryan Dungey, is particularly versatile and provides maximum protection against roost, hits and inclement weather conditions. The X-Force features a universal mounting kit allowing the handguards to be mounted above or below the levers. The included spoilers allow the handguards to be mounted with or without ventilation.



USED BY OUR
FACTORY TEAM

UPP.15.02.040

X-FACTOR HANDGUARDS

Exclusive Team Edition color only available through KTM PowerParts! The X-Factor is an all-new handguard made for those looking for the ultimate in style and protection. Built for extreme riding conditions, the X-Factor features an oversized, 35mm, black anodized bar, with a "C" shape design, which offers a higher level of impact resistance than standard aluminum bars. Comes complete with universal X-Factor mounting hardware. The dual-injected polypropylene shield features a carbon fiber like texture, three-bolt removal system for easy access to the bar, and a larger 150 mm outer diameter that offers more coverage from roost, debris and extreme conditions. Replacement parts available: shields (UPP15.02.041), bars (UPP15.02.042) and mount kit (UPP15.05.043)



U690.7896 ■

U690.7897 ■

DEFLECTOR SET

Durable plastic shields to mount with (U690.7893 or U691.1027) aluminum handguards.

U690.7894

MAGURA

U690.7895

RENTHAL/NEKEN

U691.1028

RENTHAL TWINWALL



CLAMPS EASY ROUTE

Designed to match aluminum handguards (U690.7893). The curved shape of the clamp allows for plenty of room to route cables and hoses. Three different tapers available for the perfect fit. Note: Some KTM models now come stock with tapered Neken handlebar (780.02.001.000 / 17), in this case use clamp set (U691.0015).

U690.7893

WRAP-AROUND HANDGUARD BRACKET

Used by the top offroad riders around the country, these handguards are made from high-quality aluminum and finished with tough black anodizing. Mounting clamps are sold separately to ensure the optimized fit for your particular handlebar.

U691.1027

RENTHAL TWINWALL

WRAP-AROUND HANDGUARD BRACKET

Special length and shape to work perfectly with Renthal Twinwall handlebars.

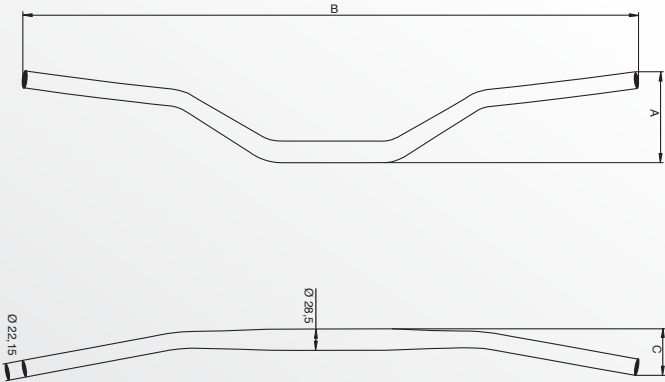


DO YOU KNOW THAT KTM HANDLEBARS MUST WITHSTAND VERY EXTENSIVE AND SPECIALLY DEVELOPED TEST CYCLES BEFORE THEY GO TO MARKET?

THE FACTS:

- All KTM handlebars are made from EN AW 7010 T6 aluminum
- 28.5 mm diameter in the clamping area
- 22.15 mm diameter in the lever area
- Position markings for simple setting
- Large variety of sizes and shapes

You'll definitely find the perfect handlebar for your preferred riding position with the sizing table for KTM handlebars.



U690.9866

RENTHAL FATBAR HANDLEBAR ORANGE

Renthal 604, orange, 99 mm, 802 mm, 54 mm

U691.2020

RENTHAL FATBAR HANDLEBAR ORANGE

Renthal 827, orange, 117 mm, 811 mm, 66 mm

| KTM Item Number | Model | Color | A | B | C |
|-------------------|----------------|--------|-----|-----|----|
| 548.02.001.100/17 | SX/XC/XC-W/EXC | grey | 120 | 805 | 63 |
| 548.02.101.200/17 | SX/XC/XC-W/EXC | grey | 130 | 808 | 65 |
| 548.02.001.300/17 | SX/XC/XC-W/EXC | grey | 120 | 803 | 64 |
| 548.02.001.400/17 | SX/XC/XC-W/EXC | grey | 120 | 808 | 64 |
| 548.02.001.300/04 | SX/XC/XC-W/EXC | orange | 115 | 806 | 62 |
| 590.02.101.200/17 | SX/XC/XC-W/EXC | silver | 120 | 808 | 63 |
| 773.02.001.100/17 | SX/XC/XC-W/EXC | grey | 110 | 806 | 81 |
| 777.02.001.100/30 | SX/XC/XC-W/EXC | black | 117 | 811 | 77 |
| 780.02.001.000/17 | SX/XC/XC-W/EXC | grey | 114 | 808 | 66 |

U695.1393

RENTHAL TWINWALL HANDLEBAR

The Twinwall, in a KTM orange design, combines two handlebars into one. The exterior provides maximum strength against external damage (e.g. falling over) and is also anodized against corrosion. The interior, made of a special alloy, is also hard anodized to protect it from damage by the handlebar controls. Nylon inserts in the inner tube allow thinner walls, resulting in weight savings and a positive effect on the flexing properties. Rubber seals at the crossing points of the two tubes prevent the ingress of water, dirt, cleaning agents, and other contaminants. Comes with handlebar padding.





HANDLEBAR SUPPORT

| | |
|----------------|--------|
| 790.01.939.031 | 31 MM |
| 790.01.139.036 | 36 MM* |
| 790.01.939.041 | 41 MM |
| 790.01.939.046 | 46 MM |
| 790.01.939.051 | 51 MM |
| SX/XC | 16-18 |

**HANDLEBAR MOUNT**

* Stock Height

| | |
|----------------|-------|
| 789.01.939.044 | 32 MM |
| 789.01.939.144 | 37 MM |
| 789.01.939.244 | 42 MM |
| 789.01.939.344 | 47 MM |
| 789.01.939.444 | 52 MM |
| SX/XC | -15 |
| XC-W/EXC | -16 |

**HANDLEBAR MOUNT KIT**

Available in five different heights. Kit includes 2 x handlebar support lower parts and 2 x fastening bolts. Please note, upper parts and bolts required for clamping the handlebar are taken from the original handlebar support.

| | |
|----------------|-------|
| 548.01.043.012 | 12 MM |
| 548.01.043.020 | 20 MM |
| SX/XC | -15 |
| XC-W/EXC | -17 |

**HANDLEBAR RISER**

Can only be fitted in combination with handlebar support (590.01.039.100), comes standard on EXC models up to MY 2011.

| | |
|----------------|-------|
| 777.01.939.010 | 10 MM |
| 777.01.939.020 | 20 MM |
| 777.01.939.030 | 30 MM |
| SX/XC | -15 |
| XC-W/EXC | -17 |

**HANDLEBAR RISER**

These CNC-machined, high-strength aluminum handlebar risers are extremely robust thanks to their special screw fastening (from below) on the triple clamp. Twisting and bending are therefore practically impossible. Use of these handlebar risers is only possible on CNC-machined triple clamps. Available in three different heights.



SXS.07.125.200

SX/XC -15
XC-W/EXC -18

PHDS - PROGRESSIVE HANDLEBAR DAMPING SYSTEM

The CNC-machined handlebar mounting with cushioning rubber inserts relieves wrist and shoulder joints.

Further benefits of the PHDS:

- Cushioning of heavy hits
- Absorption of vibration from chassis and engine
- Additional handlebar damping in horizontal direction
- Optimum steering precision
- Handlebar height adjustable to 2 positions
- Additional damping elements available in three degrees of hardness (soft, medium, hard) for individual customization

PHDS bar pad (SXS.07.250.800) Replacement elastomers available: Green (SXS.05.125.203) Soft, Yellow (SXS.05.125.204) Standard, Red (SXS.05.125.205) Hard



790.01.940.144

SX/XC-F 16-18

BUSHING KIT FOR HANDLEBAR MOUNT

With this bushing kit you can convert the standard damped handlebar support on your bike to a rigid handlebar support.



790.01.939.500

SX/XC 16-18

PHDS - PROGRESSIVE HANDLEBAR DAMPING SYSTEM

This CNC-machined handlebar bracket with shock-absorbing rubber inserts protects your wrist and shoulder joints.

Further benefits of the PHDS:

- Helps absorb hard shocks
- Absorbs chassis and engine vibrations
- Additional handlebar damping on the horizontal axis
- Optimal steering precision
- Handlebar position can be set at 2 different heights
- Additional absorbing elements available in three different hardnesses (soft, medium, hard) for individual customization
- Replaces the factory-installed rubber damping inserts in the handlebar bracket

PHDS handlebar pad (SXS.07.250.800) Replacement elastomers available: Green (SXS.05.125.203) Soft, Yellow (SXS.05.125.204) Standard, Red (SXS.05.125.205) Hard

USED BY OUR
FACTORY TEAM

UPP.15.02.035

22 MM CLAMPS (NON-RUBBER MOUNTED)

UPP.15.02.036

20 MM CLAMPS

UPP.15.02.037

SX/XC 16-17

GPR V4 STABILIZER KIT

Constructed from high-quality billet aluminum and used by our KTM Factory Offroad Race Team. Raises the bar height by 13 mm. Post mount included.



STEERING DAMPER



770.12.005.000

FACTORY STEERING DAMPER
Greater safety and stability at the front forks under speed. This extremely light and fully adjustable KTM steering damper offers top performance for the price. The sophisticated damper mounting allows for individual steering adjustments even after installation. Very low design profile.

790.12.970.000

SX/XC 16–18

BRACKET FOR FACTORY STEERING DAMPER



772.12.905.444

SX/XC –15
XC-W/EXC 12–18

BRACKET FOR FACTORY STEERING DAMPER



770.12.005.144

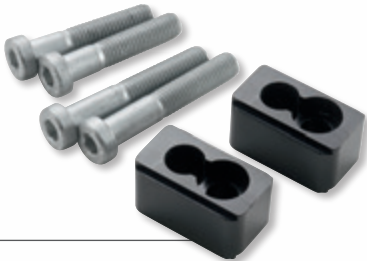
SX/XC –15
XC-W/EXC 12–18

CLAMP FOR FACTORY STEERING DAMPER



770.12.005.544 **FACTORY TRIPLE CLAMP**

CLAMP FOR FACTORY STEERING DAMPER
Counter bearing (772.12.905.444) must be installed for use with SX/XC models starting with MY 16.



770.12.005.644

PHDS CLAMP FOR FACTORY STEERING DAMPER
This bracket is required for fitting PHDS handlebar support (SXS.07.125.200) in conjunction with Factory steering damper (770.12.005.000) or steering damper (585.12.050.100), whereby the latter is only permissible if steering damper clamp (585.12.050.144 or 585.12.050.544) is used.

790.12.950.000

SX/XC 16–18

CLAMP FOR FACTORY STEERING DAMPER





585.12.050.100

STEERING DAMPER

Have you ever had the handlebars ripped out of your hands? This high-end steering damper provides maximum control on fast tracks and a significant increase in safety! Further advantages:

- Extremely lightweight
- Sensitive feedback behavior
- High speed settings
- Optimum 25 click setting range

Proven success with the KTM Rally Team. Steering head bolts (548.01.036.000) must be installed when mounted onto XC-W/EXC 15-16, 125/150 SX 15, 250 SX/XC 15-16, or SX-F/XC-F 15 models.



585.12.050.144

SX/XC –15
XC-W/EXC 12–17

CLAMP FOR STEERING DAMPER

585.12.050.544 FACTORY TRIPLE CLAMP

CLAMP FOR STEERING DAMPER

Counter bearing (772.12.905.444) must be installed for use with SX models starting with MY 16.

790.12.970.000

SX/XC 16–18

BRACKET FOR STEERING DAMPER



772.12.905.444

SX/XC –15
XC-W/EXC 12–18

BRACKET FOR STEERING DAMPER



790.12.960.000

SX/XC 16–18

CLAMP FOR STEERING DAMPER



772.39.974.200 

250/350 SX-F/XC-F 11-15

450 SX-F/XC-F 13-15

515.39.974.200 

TWO-STROKE

**MAP SWITCH**

Ignition curve adjustments made easy! With this switch, you can change the ignition curve conveniently from the handlebar on models featuring a digital box with pre-programmed ignition curves. (Whether or not your KTM has pre-programmed ignition curves can be found in the motorcycle owner's manual).

*Launch control function enabled when used with model year 16 XC-F

CLOSED COURSE / COMPETITION USE ONLY!



551.31.003.044

XC-W (TWO-STROKE) 06-18

CARBURETOR HEATING

Prevents the carburetor from freezing in winter riding conditions.

781.12.920.000

HOUR METER

Know exactly when the next service is due.



781.12.920.044

HOUR METER BRACKET

To mount hour meter (781.12.920.000) onto the triple clamp.

777.11.979.000

AUXILIARY WIRING HARNESS

We recommend use of this auxiliary wiring harness with all powered accessories. With this wiring harness, you also have the option of fitting such powered accessories as grip heaters or fans to your XC / XC-W / EXC. Please note: The power consumer is now connected directly to the battery. Y-distributor switch (777.11.979.044) is also recommended to control power to added accessories.



777.11.979.010

Y-DISTRIBUTOR

The Y-distributor allows you to connect two power consumers to auxiliary wiring harness (777.11.979.000).



551.39.904.100

| | |
|---------------|---------|
| 200 XC-W | 13 – 16 |
| 250 XC / XC-W | 08 – 16 |
| 300 XC / XC-W | 07 – 16 |

STATOR KIT

Ensures significantly higher power output and is required for use of the X2 light on all EXC models. We also recommend extra power when using other additional electrical components, e.g. fan, heated grips, etc. Only for use on two-stroke bikes with an electric starter, since a battery is required!



777.11.979.044

Y-DISTRIBUTOR

The Y-distributor allows you to connect two power consumers to auxiliary wiring harness (777.11.979.000). The connected power consumer can be switched off with the integrated switch. This prevents the battery from being drained unnecessarily.



777.11.969.044

XC-W / EXC 12 – 16

PULL SWITCH BRACKET

With this bracket the pull switch has an accessible, defined location. Recommended in combination with the Y-distributor switch (777.11.979.044).





781.02.994.100

SX-F / XC-F -15
XCF-W / EXC -16

THROTTLE CABLE PROTECTION

- Reinforces the throttle cable at its weakest point
- Simple to fit
- Made of aluminum



SXS.07.250.800

PHDS BAR PAD

Provides optimum protection in traditional KTM Racing fashion.



790.02.901.050

BAR PAD

Provides optimum protection with an added time card slot. A small extra pocket allows you to stow small items. Can also be fitted in combination with the PHDS - progressive handlebar damping system.



548.02.005.000

BAR ENDS

Protects grip ends from grazing in the event of a fall.



502.12.040.000/30 

RACING MIRROR

Left-hand version, light and robust.
CLOSED COURSE / COMPETITION USE ONLY!



777.02.944.000

CLAMP WITH SLIDE INSERT

The CNC-machined clamp and its plastic insert are designed in such a way that the brake and clutch controls twist in the event of a minor fall, thereby reducing the risk of a lever breaking. Fits all Brembo® brake and clutch controls.



CNC PARTS ANODIZED

ENGINE





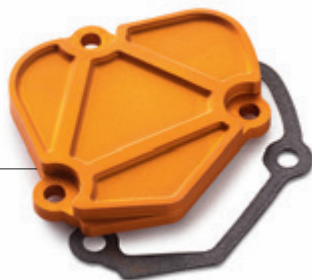
DID YOU KNOW THAT ALL KTM CNC PARTS ARE MANUFACTURED FROM THE HIGHEST GRADE OF ALUMINUM AND THEREFORE NOT ONLY LOOK GOOD, BUT ALSO WITHSTAND THE TOUGHEST TREATMENT?

With the anodized aluminum components in the original factory look from the KTM PowerParts range, you can turn your KTM into something very special.

504.37.905.044

125/150 SX 16-18
150 XC-W 17-18

FACTORY CONTROL COVER



773.38.941.044

250 SX-F/XC-F 13-18
350 SX-F/XC-F 11-18
450 SX-F/XC-F 16-18
450/505 SX-F/XC-F 07-12
250 XCF-W/EXC-F 14-18
350 XCF-W/EXC-F 12-18
400/450/530 XCF-W/EXC 08-11
450/500 EXC-F 17-18

750.38.041.100

450 SX-F/XC-F 13-15
450/500 XCF-W/EXC 12-16

FACTORY OIL FILTER COVER



U695.1157

250 SX-F/XC-F 06-12
450/525 SX 00-06
250 XCF-W 07-13
250/400/450/525 EXC 99-07

FACTORY OIL FILTER COVER



794.30.920.044

SX/XC/XC-W/EXC

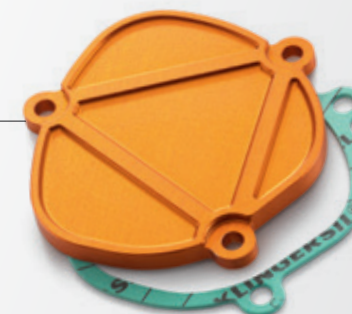
FACTORY OIL PLUG



548.37.905.044

250 SX/XC/XC-W 07-18
300 SX/XC/XC-W 08-17

FACTORY CONTROL COVER



792.38.904.044

250/350 SX-F/XC-F 16-18
250/350 EXC-F 17-18

794.38.904.044

450 SX-F/XC-F 16-18
450/500 EXC-F 17-18

FACTORY OIL PUMP COVER



SXS.07.450.265

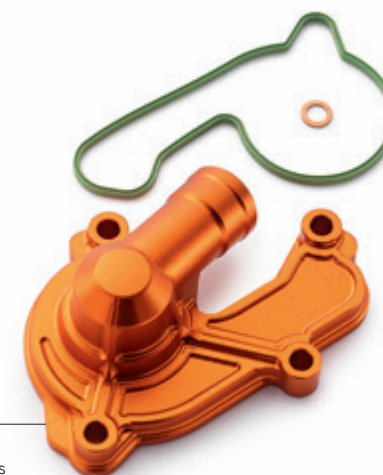
250 SX-F 13-15
350 SX-F 11-15
450 SX-F 13-15
250 XCF-W 14-16
350/400/450/500 XCF-W/EXC-F 08-16

FACTORY OIL PUMP COVER



504.35.952.044125/150 SX 16-18
150 XC-W 17-18**FACTORY WATER PUMP COVER**

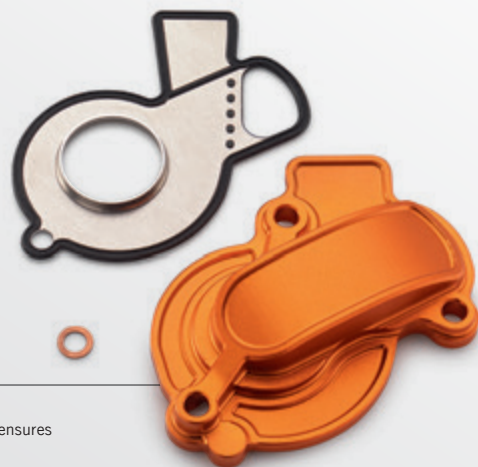
The weight optimized water pump cover ensures maximum water flow.

**792.35.952.044**250/350 SX-F/XC-F 16-18
250/350 EXC-F 17-18**FACTORY WATER PUMP COVER**

The weight optimized water pump cover ensures maximum water flow.

794.35.952.044450 SX-F/XC-F 16-18
450/500 EXC-F 17-18**FACTORY WATER PUMP COVER**

The weight optimized water pump cover ensures maximum water flow.





SXS.11.350.235

| | |
|-----------------|-------|
| 250 SX-F/XC-F | 13-15 |
| 350 SX-F/XC-F | 11-15 |
| 250 XCF-W/EXC-F | 16 |
| 350 XCF-W/EXC-F | 12-16 |

FACTORY CLUTCH COVER OUTSIDE



772.30.902.144

| | |
|---------------------|-------|
| 250/350 SX-F/XC-F | 11-18 |
| 450/505 SX-F/XC-F | 07-12 |
| 250/350 XCF-W/EXC-F | 12-18 |

FACTORY IGNITION COVER PLUG





USED BY OUR **KTM**
FACTORY TEAM

504.30.926.044

125/150 SX 16-18
150 XC-W 17-18

554.30.926.044

250/300 SX/XC/XC-W 17-18

792.30.926.044

250/350 SX-F/XC-F 16-18
250/350 EXC-F 17-18

794.30.926.044

450 SX-F/XC-F 16-18
450/500 EXC-F 17-18

FACTORY CLUTCH COVER OUTSIDE





794.13.951.000

| | |
|---------------|-------|
| 125/150 SX/XC | 16-18 |
| 250 SX/XC | 17-18 |
| SX-F/XC-F | 16-18 |
| XC-W/EXC-F | 17-18 |

STEP PLATE FOR BRAKE LEVER

Wider contact surface than standard:

- +8 mm on 125/150 SX/XC-W, SX-F, 450/500 EXC-F
- +16 mm on 250 / 300 SX / EXC, 250 / 350 SX-F/EXC-F



794.34.931.044

| | |
|---------------|-------|
| 125/150 SX/XC | 16-18 |
| 250 SX/XC | 17-18 |
| SX-F/XC-F | 16-18 |
| XC-W/EXC-F | 17-18 |

STEP PLATE FOR SHIFTING LEVER

7 mm wider contact surface than standard.



548.13.951.100

| | |
|---------------|-----|
| 125/150 SX/XC | -15 |
| 250 SX/XC | -16 |
| SX-F/XC-F | -15 |
| XC-W/EXC-F | -16 |

STEP PLATE FOR BRAKE LEVER

7 mm wider contact surface than standard.



777.07.908.244

| | |
|----|-------|
| SX | 13-18 |
|----|-------|

FACTORY FUEL TANK CAP

781.07.908.144

3/4" VERSION

FACTORY FUEL TANK CAP

777.34.931.144

| | |
|---------------|-----|
| 125/150 SX/XC | -15 |
| 250 SX/XC | -16 |
| SX-F/XC-F | -15 |
| XC-W/EXC-F | -16 |

STEP PLATE FOR SHIFTING LEVER

5 mm wider contact surface than standard.



604.02.933.144

125/150 SX/XC 09-15
450 SX-F/XC-F 09-12
125/200 XC-W 09-16

HYDRAULIC CLUTCH COVER



SXS.05.450.210 BREMBO®

SX/XC/XC-W/EXC

HAND BRAKE CYLINDER AND HYDRAULIC CLUTCH COVER



U695.1010

FACTORY FUEL TANK CAP VENT



SXS.08.300.040

FOR 48 MM FORKS

FACTORY KNOB ADJUSTER SET

Not suitable for air forks.



U695.1981

SX/XC/XC-W/EXC 04-18

REAR BRAKE RESERVOIR CAP



548.13.960.050

SX/XC/XC-W/EXC 04-18

REAR BRAKE RESERVOIR EXTENDER

- Increases the volume of the foot brake cylinder
- The additional cooling ribs minimize the heat-up of brake fluid
- Eliminates dangerous "fading" almost completely
- Space requirements: Total height including cover approximately 40.5 mm



796.08.001.000/EB ■

796.08.001.000/28 □

XC-W/EXC-F

17-18

HEADLIGHT MASK

796.08.013.000/EB ■

796.08.013.000/28 □

XC-W/EXC-F

17-18

REAR FENDER

790.08.013.000/EB ■

790.08.013.000/28 □

125/150 SX/XC

16-18

250/300 SX/XC

17-18

SX-F/XC-F

16-18

REAR FENDER

790.08.007.000/EB ■

790.08.007.000/28 □

125/150 SX/XC

16-18

250/300 SX/XC

17-18

SX-F/XC-F

16-18

XC-W/EXC-F

17-18

FRONT NUMBER PLATE

790.06.007.000/EB ■

790.06.007.000/28 □

125/150 SX/XC

16-18

250/300 SX/XC

17-18

SX-F/XC-F

16-18

XC-W/EXC-F

17-18

SIDE PANEL LEFT

790.06.004.000/EB ■

790.06.004.000/28 □

125/150 SX/XC

16-18

250/300 SX/XC

17-18

SX-F/XC-F

16-18

XC-W/EXC-F

17-18

SIDE PANEL RIGHT

790.08.054.000/EB ■

790.08.054.000/28 □

125/150 SX/XC

16-18

250/300 SX/XC

17-18

SX-F/XC-F

16-18

XC-W/EXC-F

17-18

SHROUD SET

790.08.010.000/EB ■

790.08.010.000/28 □

125/150 SX/XC

16-18

250/300 SX/XC

17-18

SX-F/XC-F

16-18

XC-W/EXC-F

17-18

FRONT FENDER

777.01.094.100/EB ■

777.01.094.100/28 □

125/150 SX/XC

16-18

250/300 SX/XC

17-18

SX-F/XC-F

16-18

XC-W/EXC-F

17-18

FORK PROTECTION SET

790.06.001.000/EB ■

790.06.001.000/28 □

| | |
|---------------|-------|
| 125/150 SX/XC | 16-18 |
| 250/300 SX/XC | 17-18 |
| SX-F/XC-F | 16-18 |
| XC-W/EXC-F | 17-18 |

AIR BOX LOWER

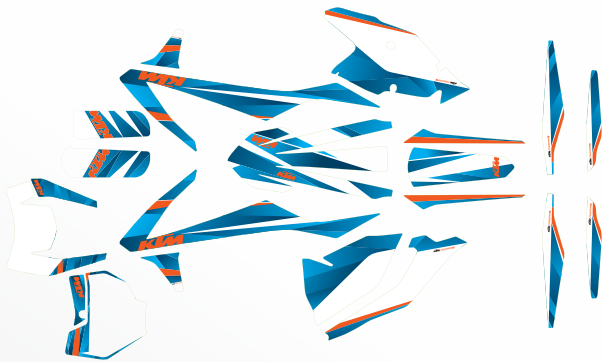
790.06.003.000/EB ■

790.06.003.000/28 □

| | |
|---------------|-------|
| 125/150 SX/XC | 16-18 |
| 250/300 SX/XC | 17-18 |
| SX-F/XC-F | 16-18 |
| XC-W/EXC-F | 17-18 |

AIR BOX SIDE COVER





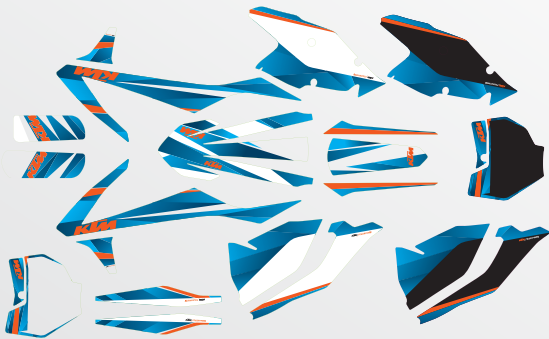
790.08.990.100
XC-W / EXC-F 17-18

“STYLE” GRAPHICS KIT



777.08.990.300
125/150 SX 15
250/300 SX/XC 15-16
SX-F/XC-F 15

FACTORY GRAPHICS KIT



790.08.990.000
125/150 SX/XC 16-18
250/300 SX/XC 17-18
SX-F/XC-F 16-18

“STYLE” GRAPHICS KIT



792.08.990.000
125/150 SX/XC 16-18
250/300 SX/XC 17-18
SX-F/XC-F 16-18

FACTORY GRAPHICS KIT



794.08.990.000

| | |
|---------------|-------|
| 125/150 SX/XC | 16-18 |
| 250/300 SX/XC | 17-18 |
| SX-F/XC-F | 16-18 |
| XC-W/EXC | 17-18 |

FACTORY ENDURO GRAPHICS KIT



796.08.990.000

| | |
|---------------|-------|
| 125/150 SX/XC | 16-18 |
| 250/300 SX/XC | 17-18 |
| SX-F/XC-F | 16-18 |
| EXC/XC-W | 17-18 |

SIX DAYS GRAPHICS KIT "SPAIN"



787.08.990.600

| | |
|----------|----|
| XC-W/EXC | 16 |
|----------|----|

FACTORY ENDURO GRAPHICS KIT



796.08.990.500

NEW

| | |
|---------------|-------|
| 125/150 SX/XC | 16-18 |
| 250/300 SX/XC | 17-18 |
| SX-F/XC-F | 16-18 |
| XC-W/EXC | 17-18 |

SIX DAYS GRAPHICS KIT "FRANCE"



787.08.990.500

XC-W/EXC

16

SIX DAYS GRAPHICS KIT "SLOVAKIA"



787.08.990.300

XC-W/EXC

14-15

SIX DAYS GRAPHICS KIT "ITALY"



787.08.990.000

XC-W/EXC

12-13

SIX DAYS GRAPHICS KIT "GERMANY"

UPP.16.08.020

125/150 SX 16-18
SX-F/XC-F 16-18
250/300 SX/XC 16-18

UPP.15.08.020

SX-F/XC-F 13-15
SX/XC 2 STROKE 13-16
125/150 SX 13-15



KURT CASELLI FOUNDATION GRAPHICS

Ride like Caselli with these special edition Kurt Caselli Foundation graphics.
A portion of all proceeds will be donated to the Kurt Caselli Foundation.

775.08.190.400

XC-W/EXC 12-13

FACTORY ENDURO GRAPHICS KIT



777.08.990.200

SX/XC 13-15

FACTORY GRAPHICS KIT





773.01.994.050

FORK PROTECTION STICKER SET

For use on the closed fork protector.



777.02.990.000

HANDGUARD STICKER SET

For use with handguards (777.02.079.000 / 04 / 28 / 30,
777.02.179.000 / 04 / EB / 28 / 30, 765.02.979.000 / 04 / 28 / 30
and 796.02.979.000 / 04 / EB / 28 / 30)



790.01.994.050

SX/XC 15-18
XC-W/EXC-F 16-18

FORK PROTECTION STICKER SET

Can be used on the open fork protector.



781.08.999.000

125/150 SX/XC -15
250/300 SX/XC -16
SX-F/XC-F -15
XC-W/EXC-F -16

RADIATOR LOUVER STICKERS



796.08.988.000/28 ☐

796.08.988.000/30 ☐

796.08.988.000/38 ☐

796.08.988.000/67 ☐

796.08.988.000/80 ☐

125/150 SX/XC 16-18

250/300 SX/XC 17-18

SX-F/XC-F 16-18

XC-W/EXC-F 17-18

NUMBER PLATE BACKGROUNDS

Consists of 4 pieces.



796.08.978.000

STICKER SHEET KIT

KTM stickers, made from robust material to stick on your bike, car, trailer, etc. Contains 5 sheets.

322.100 NR. 0

322.101 NR. 1

322.102 NR. 2

322.103 NR. 3

322.104 NR. 4

322.105 NR. 5

322.106 NR. 6

322.107 NR. 7

322.108 NR. 8

322.109 NR. 9

WHITE NUMBERS

5" tall, 3 pieces each.

322.200 NR. 0

322.201 NR. 1

322.202 NR. 2

322.203 NR. 3

322.204 NR. 4

322.205 NR. 5

322.206 NR. 6

322.207 NR. 7

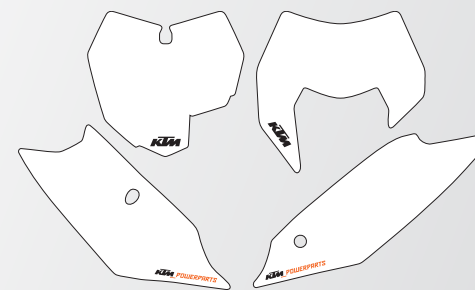
322.208 NR. 8

322.209 NR. 9

BLACK NUMBERS

5" tall, 3 pieces each.

1 2 3 4 5
6 7 8 9 0



787.08.988.000/28 ☐

787.08.988.000/30 ☐

787.08.988.000/38 ☐

787.08.988.000/67 ☐

787.08.988.000/80 ☐

125/150 SX/XC 13-15

250/300 SX/XC 13-16

SX-F/XC-F 13-15

XC-W/EXC-F 14-16

NUMBER PLATE BACKGROUNDS

Consists of 4 pieces.



794.07.940.300

| | |
|---------------|-------|
| 125/150 SX/XC | 16–18 |
| 250/300 SX/XC | 17–18 |
| SX-F/XC-F | 16–18 |
| XC-W/EXC-F | 17–18 |

FACTORY SEAT "WAVE"

This seat provides great freedom of movement, but still offers a perfect hold. The "wave" surface acts as a step even though it isn't one. Standard height. Ridges slightly higher than the standard seat.



KTM POWERPARTS



794.07.978.000

SEAT POCKET

Recommended for storing your timecard during races. Stick it directly to the seat with grip glue.

UPP.16.07.020

| | |
|---------------|-------|
| 125/150 SX/XC | 16-18 |
| 250/300 SX/XC | 17-18 |
| SX-F/XC-F | 16-18 |
| XC-W/EXC-F | 17-18 |

GRIPPER SEAT COVER WITH RIBS



USED BY OUR **KTM**
FACTORY TEAM

792.07.940.050

| | |
|---------------|-------|
| 125/150 SX/XC | 16-18 |
| 250/300 SX/XC | 17-18 |
| SX-F/XC-F | 16-18 |
| XC-W/EXC-F | 17-18 |

FACTORY SEAT COVER

This seat cover with transversely stitched ribs ensures maximum support with unrestricted freedom of movement thanks to its special design. For standard height seats.





794.07.940.000

| | |
|---------------|-------|
| 125/150 SX/XC | 16-18 |
| 250/300 SX/XC | 17-18 |
| SX-F/XC-F | 16-18 |
| XC-W/EXC-F | 17-18 |

HIGH SEAT

Specially designed for riders over 5'10" tall. Approx. 20 mm higher than the standard seat.

794.07.940.100

| | |
|---------------|-------|
| 125/150 SX/XC | 16-18 |
| 250/300 SX/XC | 17-18 |
| SX-F/XC-F | 16-18 |
| XC-W/EXC-F | 17-18 |

EXTRA HIGH SEAT

Specially designed for riders over 6'2" tall. Approx. 35 mm higher than the standard seat.

794.07.940.200

| | |
|---------------|-------|
| 125/150 SX/XC | 16-18 |
| 250/300 SX/XC | 17-18 |
| SX-F/XC-F | 16-18 |
| XC-W/EXC-F | 17-18 |

LOW SEAT

Provides shorter riders with optimum control of the motorcycle in difficult terrain. Approx. 15 mm lower than the standard seat.



794.07.940.400

| | |
|---------------|-------|
| 125/150 SX/XC | 16-18 |
| 250/300 SX/XC | 17-18 |
| SX-F/XC-F | 16-18 |
| XC-W/EXC-F | 17-18 |

STEP SEAT

The factory rider seat, thanks to the special step, there's no slipping backwards when you open up the throttle. Standard height.



794.07.940.500

| | |
|---------------|-------|
| 125/150 SX/XC | 16-18 |
| 250/300 SX/XC | 17-18 |
| SX-F/XC-F | 16-18 |
| XC-W/EXC-F | 17-18 |

SOFT SEAT

Particularly elastic foam for extra comfort. Standard height.

772.07.940.800

| | |
|---------------|-------|
| 125/150 SX/XC | 11-15 |
| 250/300 SX/XC | 11-16 |
| SX-F/XC-F | 11-15 |
| XC-W/EXC | 12-16 |

STEP SEAT

The factory rider seat, thanks to the special step, there's no slipping backwards when you open up the throttle. Standard height.

**773.07.040.100**

| | |
|----|-------|
| SX | 13-15 |
|----|-------|

772.07.940.400

| | |
|---------------|-------|
| 125/150 SX/XC | 11-15 |
| 250/300 SX/XC | 11-16 |
| SX-F/XC-F | 11-15 |
| XC-W/EXC | 12-16 |

HIGH SEAT

Specially designed for riders over 5'10" tall. Approx. 20 mm higher than the standard seat.

**781.07.940.000**

| | |
|---------------|-------|
| 125/150 SX/XC | 11-15 |
| 250/300 SX/XC | 11-16 |
| SX-F/XC-F | 11-15 |
| XC-W/EXC | 12-16 |

EXTRA HIGH SEAT

Specially designed for riders over 6'2" tall. Approx. 35 mm higher than the standard seat.

773.07.040.200

| | |
|-----|-------|
| SX | 07-10 |
| EXC | 08-11 |

772.07.940.600

| | |
|---------------|-------|
| 125/150 SX/XC | 11-15 |
| 250/300 SX/XC | 11-16 |
| SX-F/XC-F | 11-15 |
| XC-W/EXC | 12-16 |

LOW SEAT

Provides shorter riders with optimum control of the motorcycle in difficult terrain. Approx. 15 mm lower than the standard seat.

772.07.940.700

| | |
|---------------|-------|
| 125/150 SX/XC | 11-15 |
| 250/300 SX/XC | 11-16 |
| SX-F/XC-F | 11-15 |
| XC-W/EXC | 12-16 |

SOFT SEAT

Particularly elastic foam for extra comfort. Standard height.



777.07.940.050

| | |
|---------------|-------|
| 125/150 SX/XC | 11-15 |
| 250/300 SX/XC | 11-16 |
| SX-F/XC-F | 11-15 |
| XC-W/EXC | 12-16 |



FACTORY SEAT COVER

This is the seat cover of choice for many of our Factory riders. Perfect for all types of riding. For standard height seats.

772.07.940.900

| | |
|---------------|-------|
| 125/150 SX/XC | 11-15 |
| 250/300 SX/XC | 11-16 |
| SX-F/XC-F | 11-15 |
| XC-W/EXC | 12-16 |



FACTORY SEAT "WAVE"

This seat provides great freedom of movement, but still offers a perfect hold. The "wave" surface acts as a step, even though it isn't one. Standard height.

777.07.040.100

| | |
|---------------|-------|
| 125/150 SX/XC | 11-15 |
| 250/300 SX/XC | 11-16 |
| SX-F/XC-F | 11-15 |
| XC-W/EXC | 12-16 |



FACTORY SEAT

With its blue cover, this seat suits the current factory-style graphics kits. Standard height.

UPP.15.07.010

| | |
|---------------|-------|
| 125/150 SX/XC | 11-15 |
| 250/300 SX/XC | 11-16 |
| SX-F/XC-F | 11-15 |
| XC-W/EXC | 12-16 |



COMFORT SEAT BY SEAT CONCEPTS

New, wider seat and improved foam density helps keep riders comfortable when spending extended time in the saddle.

789.07.940.050

| | |
|---------------|-------|
| 125/150 SX/XC | 11-15 |
| 250/300 SX/XC | 11-16 |
| SX-F/XC-F | 11-15 |
| XC-W/EXC | 12-16 |

FACTORY SEAT COVER

This seat cover with transversely stitched ribs ensures maximum support with unrestricted freedom of movement thanks to its special design. For standard height seats.







790.03.940.044

| | |
|---------------|-------|
| 125/150 SX/XC | 16–18 |
| 250/300 SX/XC | 17–18 |
| SX-F/XC-F | 16–18 |
| XC-W/EXC | 17–18 |

FOOTPEG SET

41 % lighter with the same step area as the standard footpegs. These titanium footpegs were developed to the specifications of our KTM Factory riders. Use of the special titanium alloy also allows wear to be reduced to a minimum. When installed on XC-W/EXC-F models, the titanium footpegs sit 6 mm lower than the production footpegs.



780.03.940.244

| | |
|---------------|-----|
| 125/150 SX/XC | –15 |
| 250/300 SX/XC | –16 |
| SX-F/XC-F | –15 |
| XC-W/EXC | –16 |

PIVOT PEGZ

Ingenious: Footpegs that move with you when you shift your weight. Developed and tested by KTM professional riders. Ideal for all types of riding and racing. The benefits:

- Spring-mounted, 20° rotational movement possible towards front and rear
 - More control and grip in the corners thanks to the maneuverability
 - Large tread surface area of 60 mm
 - Simpler and quicker weight shifting
 - Gear changing and braking made easier
 - Permanent contact between boot and footpeg: extends the service life of your boots!
- Replacement parts available: Spring kit (780.03.940.020) and overhaul kit (780.03.940.030)



551.07.913.444/99

| | |
|-------------------|-------|
| 125/150 SX/XC | 11–15 |
| 250/300 SX/XC | 11–16 |
| XC-W (TWO-STROKE) | 12–16 |
| 450 SX-F | 11–12 |

11 L TANK

- Volume 11 liters
- Supplied with fuel tank cap, but fuel pump not included
- CLOSED COURSE / COMPETITION USE ONLY!



781.07.913.444/99

| | |
|-------------------|-------|
| 250/350 SX-F/XC-F | 11–15 |
| 450 SX-F/XC-F | 13–15 |
| XCF-W/EXC | 12–16 |

11 L TANK

- Volume 11 liters
- Supplied with fuel tank cap, but fuel pump not included
- Fuel pump (781.07.088.100) is also required
- CLOSED COURSE / COMPETITION USE ONLY!

792.07.913.044/99

SX-F 16–18

8.5 L TANK

- Volume 8.5 liters
- Supplied with fuel tank cap, but fuel pump not included
- CLOSED COURSE / COMPETITION USE ONLY!



556.07.013.033/99

| | |
|------------------------------|-------|
| SX 125 | 16–18 |
| SX 250 | 17–18 |
| XC-W (TWO-STROKE CARBURATOR) | 17–18 |

10 L TANK

- Volume 10 liters
- Fuel hose (556.07.016.000) is also required for installation on SX models
- CLOSED COURSE / COMPETITION USE ONLY!



781.07.913.544/99

| | |
|-------------------------|-------|
| SX-F/XC-F (FOUR-STROKE) | 13–15 |
| XCF-W/EXC (FOUR-STROKE) | 12–16 |

19 L TANK

- Volume 19 liters
- When fitting to SX-F models as of MY 2013 and EXC models as of MY 2014, airbox part right (772.06.004.000/04/28/30 or 772.06.004.100/04/28/30) and airbox cover (772.06.003.000/04/28/30) are also required
- Supplied with fuel tank cap, but fuel pump not included
- CLOSED COURSE / COMPETITION USE ONLY!



551.07.913.144/04 

EXC (TWO-STROKE) 14–16

781.07.913.344/04 

EXC (FOUR-STROKE) 14–16

781.07.913.044/04 

EXC (FOUR-STROKE) 12–13

13 L TANK

- Volume 13 liters
 - Fuel tank cap and fuel pump not included
- CLOSED COURSE / COMPETITION USE ONLY!



781.07.988.017 

350/450/500 XCF-W/EXC 12–16

777.07.988.017 

SX-F (FOUR-STROKE) 13–16

FACTORY FUEL PUMP CONNECTION

The factory fuel pump connection – also used by KTM Factory riders – allows the fuel hose to be routed closer along the engine, thereby preventing the fuel hose from being pulled off unintentionally during offroad use.



781.07.990.100

3/4" VERSION

FUEL FILTER

Easy and safe: Filter fits directly in the tank opening. This means that no dirt enters the fuel tank or the injection system during refueling. Fits on all 3/4" fuel tank caps.



790.07.913.044

250/300 SX/XC 18

SX-F/XC-F 13–18

EXC (FOUR-STROKE) 12–18

FUEL CONNECTION

The fuel connection machined from plastic and aluminum is very safe due to its clever design. After joining with the fuel coupler, the coupler is secured by simply twisting the connector so that undesired opening is eliminated.



772.31.997.000/04

VENT HOSE

Fuel-proof for tank and carburetor venting, approx. 3 m. Should only be used for venting purposes and not as a connection between tank and carburetor.



U690.8817

SX/XC/XC-W/EXC 11–15

SELF ADHESIVE TANK SHIELD

Used by the KTM Factory teams, this self adhesive tank shield reflects engine heat away from the fuel tank. This reduces the chance for vapor lock and restores power.





791.01.996.000 **NEW**

| | |
|----------|-------|
| SX/XC | 15–18 |
| XC-W/EXC | 16–18 |

FACTORY START

- CNC-machined from high-strength aluminum
- Two different selectable preloads, without any additional effort in mounting
- Lifting of the front wheel when starting is largely prevented
- Ensures more traction at the rear wheel
- Simple mounting of the fork ring due to a two part design
- No longer necessary to remove the fork



790.01.996.000

| | |
|----------|-------|
| SX/XC | 15–18 |
| XC-W/EXC | 16–18 |

FACTORY START

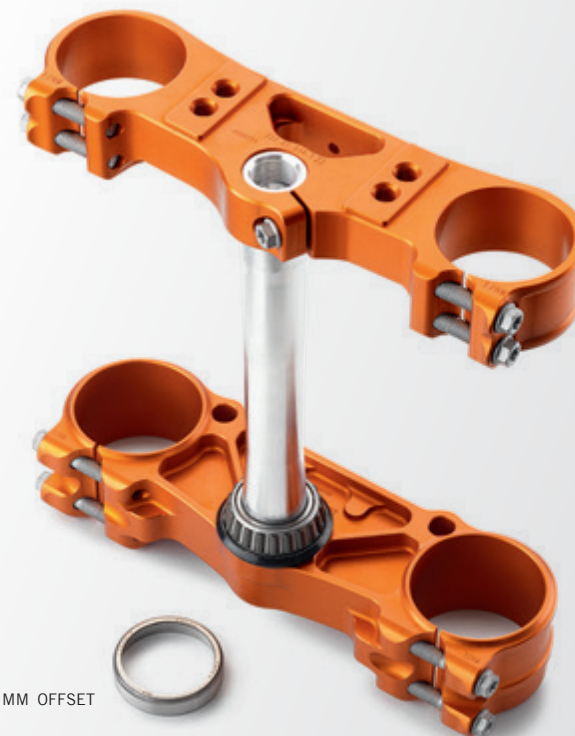
- CNC-machined from high-strength aluminum
- Lifting of the front wheel when starting is largely prevented
- Ensures more traction at the rear wheel



SXS.16.450.460 22 MM OFFSET
SX/XC 13–18

SFS TRIPLE CLAMP

The integrated SFS “Smooth Feeling System” on the handlebar support for the triple clamp is an additional damping system that dampens shocks and vibrations. As a result of the SFS system, you also get a very direct feel for the front wheel and a much more precise steering response. The stiffness of the damper can be adjusted by means of a standard pump for Schrader valves. The triple clamp is made of high quality CNC-machined aluminum and anodized orange.



781.01.999.022/04 22 MM OFFSET

781.01.999.020/04 20 MM OFFSET

SX/XC 13–18
XC-W/EXC 14–18

FACTORY TRIPLE CLAMP

- Manufactured from the highest grade of aluminum
 - Optimally tuned steering stem stiffness
 - 100% alignment of the fork tubes
 - Perfect flexibility – adapted precisely to the KTM WP fork
 - Supplied with steering stem and with the steering head bearing already pressed on
- Required items for installation on SX models from model year 2016:
Handlebar support (789.01.939.044 / 144 / 244 / 344 / 444) or PHDS (SXS.07.125.200)

SXS.13.450.460

SX/XC 13-18
XC-W/EXC 14-18

FACTORY TRIPLE CLAMP

- Made from high-grade aluminum
- Optimally tuned steering stem stiffness
- 100% alignment of the fork tubes
- Ideal flexibility - precisely customized to the KTM WP Suspension fork
- Fork clamping spindled after anodizing, in order to largely prevent twisting of the fork tube in the triple clamp
- Very easy offset adjustment of 20 or 22 mm
- Shorter offset: Stability on fast straights
- Longer offset: faster and tighter - steering into corners
- Includes steering stem with steering head bearing already pressed on

Required items for installation on SX models from model year 2016:

Handlebar support (789.01.939.044 / 144 / 244 / 344 / 444) or PHDS (SXS.07.125.200)





503.12.955.044 –50 MM
200 XC-W 08–16

551.12.955.044 –50 MM
250/300 XC-W 08
250/300 XC-W 10–15
250 XCF-W 08
250 XCF-W 10–15
350 XCF-W/EXC 12–16

780.12.955.044 –50 MM
400/450/530 XC-W/EXC 08–10
450/500 XC-W/EXC 12–16

LOW SUSPENSION KIT

The low suspension kits specially developed by KTM in collaboration with WP Suspension are the perfect compromise between maximum chassis performance and minimum possible seat height. Just like the standard parts, the components used here are manufactured from the highest quality of materials and have been specially tuned for offroad use in intensive endurance tests. To ensure the best possible function of these suspension kits, we only recommend use with a rider weight of up to 155 lbs.



796.12.955.044 –20 MM
XC-W/EXC-F 17–18

796.12.955.544 –50 MM
XC-W/EXC-F 17–18

LOW SUSPENSION KIT

The low suspension kits specially developed by KTM in collaboration with WP Suspension are the perfect compromise between maximum chassis performance and minimum possible seat height. Just like the standard parts, the components used here are manufactured from the highest quality of materials and have been specially tuned for offroad use in intensive endurance tests. To ensure the best possible function of these suspension kits, we only recommend use with a rider weight of up to 175 lbs.

796.01.905.000 **NEW**

XC-W / EXC-F 18

794.01.905.000

XC-W / EXC-F 17

PRE-LOAD ADJUSTER SET

- Tool-free installation of the pre-load adjuster from outside
- The pre-load adjuster can be offset by +3 mm and +6 mm



796.04.905.000

XC-W / EXC-F 17–18

PRE-LOAD ADJUSTER REAR SHOCK

Quick, precise chassis adjustments and improved appearance with the pre-load adjuster for the shock absorber.

The main benefits:

- Quick pre-load adjustment
- Use of the entire thread length on the shock absorber
- Very simple to use
- Lightweight
- Dust-resistant
- Mechanical drive mechanism

*Shock must be disassembled for installation



781.01.900.100

CLOSED CARTRIDGE FORKS / OPEN CHAMBER / 4CS

BLEEDER VALVE SET

Bleeder valves designed especially for WP Suspension forks. A quick press of the finger and the fork is bled.

*Not compatible with fork pre-load adjusters (794.01.905.000)



790.04.905.000

125/150 SX/XC 16–18

250/300 SX/XC 17–18

SX-F/XC-F 16–18

772.04.905.000

125/150 SX/XC 11–15

250/300 SX/XC 11–16

SX-F/XC-F 11–15

XCF-W/EXC 12–16

PRE-LOAD ADJUSTER REAR SHOCK

Quick, precise chassis adjustments and improved appearance with the pre-load adjuster for the shock absorber.

The main benefits:

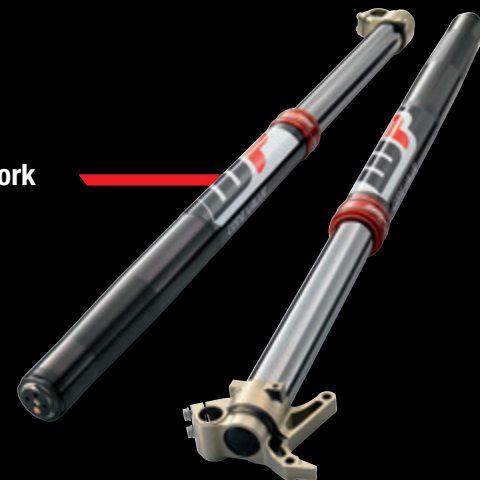
- Quick pre-load adjustment
- Use of the entire thread length on the shock absorber
- Very simple to use
- Lightweight
- Dust-resistant
- Mechanical drive mechanism

*Shock must be disassembled for installation





WP Cone Valve Fork



// CONQUER THE TOUGHEST TERRAIN!

WP Suspension offers a Cone Valve Fork for all KTM SX, XC, XC-W AND EXC models. While the setting for all current offroad forks are a compromise between comfort, damping and durability, the WP Cone Valve Fork combines some of these characteristics, while offering the following benefits:

- WP Cone Valve can always open further, which reduces harshness
- More comfort when using harder set-ups
- The Cone Valve prevents any loss of damping from bent shims
- No sealing surface, so minimum drop of pressure after valve opens
- The WP Authorized Center can adjust the fork according to your needs



WP AER 48 Cone Valve Fork

The WP AER 48 Cone Valve Fork combines two of WP's greatest technologies: The Cone Valve damping system and the AER spring system. The Cone Valve damping leg is an evolution of the traditional Cone Valve Fork with damping optimized for use in combination with an AER spring leg.

- Optimal options for AER Spring setup for initial response due to two separate chambers
- Improved riding balance with higher bottoming resistance
- Allows for customized setup and improved comfort throughout the stroke
- AER technology saves up to 2.2 lbs compared to conventional competition forks



HOW TO ORDER

These parts are available exclusively via the WP Authorized Center network. To find the right article number for your bike or to locate an Authorized Center near you visit www.WPNorthAmerica.com.



**// RIDE
HARDER**



WP TRAX Shock

WP TRAX is a very compact, mechanical system that is integrated into the bottom section of the shock absorber. WP has developed the inventive WP TRAX system in close cooperation with offroad world champions. It is available as a PDS shock for EXC and XC-W as well as for the linkage system for SX and XC models.

The benefits of the WP TRAX system are:

- You feel more grip and traction of the rear wheel, you accelerate faster
- Your bike runs higher in the stroke over multiple bumps (no "packing down")
- You feel safer and you get more comfort
- The WP Authorized Center can adjust the shock according to your needs



WP Bladder Kit

The WP Bladder Kit for the standard WP SX and XC Link Shock, for model year 2016 and newer, converts the piston-style reservoir into a bladder and improves the performance by:

- Resisting fading
- Decreasing moving parts and friction
- Improving and smoothening the ride

This Bladder Kit is also available in different versions for WP TRAX shocks.

HOW TO ORDER

These parts are available exclusively via the WP Authorized Center network. To find the right article number for your bike or to locate an Authorized Center near you visit www.WPNorthAmerica.com.



777.09.901.044/30 

FACTORY FRONT WHEEL

- Wheel size 1.6 x 21"
- For axle diameter of 26 mm (22 mm)
- 36 spoke design with silver anodized aluminum nipples
- Black anodized Excel rim
- Orange anodized KITE hub, machined from solid aluminum

When mounting on models with 22 mm axle diameter, the spacers from your original wheel must be used.

CLOSED COURSE / COMPETITION USE ONLY!

777.10.901.044/30 

FACTORY REAR WHEEL

- Wheel size 2.15 x 19"
- For axle diameter of 20 mm (25 mm)
- 36 spoke design with silver anodized aluminum nipples
- Black anodized Excel rim
- Orange anodized KITE hub, machined from solid aluminum

When mounting on SX models from 2013 onwards, the spacers from your original wheel must be used due to the larger axle diameter.

CLOSED COURSE / COMPETITION USE ONLY!





261.09.001.044/30 

FRONT WHEEL

– Wheel size 3.5 x 16.5"

– For axle diameter of 26 mm

CLOSED COURSE / COMPETITION USE ONLY!



261.10.001.044/30 

REAR WHEEL

– Wheel size 5 x 17"

– For axle diameter of 20 mm

CLOSED COURSE / COMPETITION USE ONLY!

790.14.950.044

EXC

10–18

BRACKET SENSOR MAGNET

To ensure the sensor magnet is in the correct location even after a change from enduro to supermoto wheels. Sensor magnet (582.14.050.052) is also required.





780.09.099.000

RIM STICKER SET

- For wheel size 18/21"; 19/21"
- Orange, pre-cut sticker
- Suitable for front and rear rim



781.09.999.000

RIM STICKER SET

- For wheel size 18/21"; 19/21"
- Pre-cut sticker
- Suitable for front and rear rim



611.09.099.000



611.09.099.000/20



RIM STICKER SET

- For wheel size 17"
- Pre-cut sticker
- Suitable for front and rear rim

SXS.03.540.400

20 > 26 MM

AXLE REDUCTION KIT

Together with wheel spindle (503.09.081.200) and nut (503.09.082.100), this kit allows forks with a diameter of 26 mm to be fitted to wheels with an axle diameter of 20 mm.



790.09.981.060/04

SX/XC

15-18

XC-W/EXC-F

17-18

FRONT AXLE PULLER

Simplifies removal of the front wheel. For all front axles with a diameter of 22 mm.



777.10.976.050/04

VALVE CAP SET

Orange anodized valve caps with built in valve stem puller.



U695.1087

HUB DECAL KIT

Consists of 4 pieces 37 x 31 mm and 4 pieces 48 x 40 mm.

777.10.976.150/04

VALVE CAP SET



**NEW**

| | |
|-------------------|-----|
| 777.10.951.045/04 | T45 |
| 777.10.951.047/04 | T47 |
| 777.10.951.048/04 | T48 |
| 777.10.951.049/04 | T49 |
| 777.10.951.050/04 | T50 |
| 777.10.951.052/04 | T52 |

ORANGE REAR SPROCKET

- Manufactured from high-strength 7075-T6 aluminum, the strongest aluminum in the world
- Originally developed for the aerospace industry and then adopted by the best rear sprocket manufacturers
- Chain runs accuracy of 0.002 mm
- Free from vibration – therefore the highest power transmission efficiency
- Orange anodized with a permanent, organic and environmentally friendly pigment

| | |
|----------------|-----|
| 582.10.951.042 | T42 |
| 582.10.951.045 | T45 |
| 582.10.951.048 | T48 |
| 582.10.951.050 | T50 |
| 582.10.951.052 | T52 |

REAR SPROCKET

For longer trips, we recommend this extremely low-wear, QStE 460 steel sprocket.



| | |
|-------------------|-----|
| 584.10.051.038/04 | T38 |
| 584.10.051.040/04 | T40 |
| 584.10.051.042/04 | T42 |
| 584.10.051.044/04 | T44 |
| 584.10.051.046/04 | T46 |
| 584.10.051.048/04 | T48 |
| 584.10.051.049/04 | T49 |
| 584.10.051.050/04 | T50 |
| 584.10.051.051/04 | T51 |
| 584.10.051.052/04 | T52 |

**ORANGE 2K REAR SPROCKET**

If you're looking for the ultimate in quality and performance, this sprocket is the one for you!

- High-strength steel teeth, give a long service life
- Aluminum inner ring, to reduce unsprung weight
- Joined together permanently with high-strength rivets
- At least three times longer service life than other aluminum rear sprockets
- 50% lighter than a conventional steel rear sprocket

2K sprockets are exclusively produced for KTM by Supersprox. This product is protected under the following patents in Europe and USA. EU patent # EP1573234. US Patent # 7.481.729. Patent owner Supersprox, a.s.

| | |
|-----------|-----|
| U695.1068 | T44 |
| U695.1069 | T48 |
| U690.6815 | T49 |
| U695.1070 | T50 |
| U690.6816 | T51 |
| U695.1071 | T52 |



USED BY OUR
KTM
FACTORY TEAM

RENTHAL SPROCKET

Made exclusively for KTM by Renthal, these orange anodized rear sprockets are used by the KTM Factory Race teams. Lightweight, durable and provide great performance.

DO YOU KNOW ABOUT THE DIFFERENCES AND BENEFITS OF A Z-RING OR X-RING CHAIN COMPARED TO AN O-RING CHAIN?

- The Z-ring or X-ring has 4 contact points in contrast to 2 contact points with the O-ring version
- This means higher flexibility and better running characteristics for the Z-ring or X-ring chain
- The spring effect of the Z-ring or X-ring provides consistent and permanent lubrication
- This means a significantly longer service life for the Z-ring or X-ring chain
- The Z-ring or X-ring provides a better seal against penetration by water and dirt

503.10.800.118/04 ■

5/8 x 1/4

520 Z-RING CHAIN

780.10.167.118 ■

5/8 x 1/4

520 X-RING CHAIN

503.10.165.118 ■

503.10.165.118/04 ■

5/8 x 1/4

520 MX CHAIN





781.04.070.100/04

| | |
|----------|-------|
| SX/XC | 07-18 |
| XC-W/EXC | 08-18 |

CHAIN GUIDE

USED BY OUR
FACTORY TEAM

781.04.970.000/04

| | |
|----------|-------|
| SX/XC | 07-18 |
| XC-W/EXC | 08-18 |

CHAIN GUIDE

The T.M. Designworks chain guide, as used by the KTM Factory Team:

- CNC-machined from Teflon
 - Extremely durable, due to replaceable chain running surface
 - Specially designed for the challenges of offroad use
- Pay attention to clearance when used in combination with a 2K rear sprocket.
The chain guide may need to be adapted accordingly.
Replacement wear pad available (781.04.970.010)

773.04.066.000/04

| | |
|----------|-------|
| SX | 07-10 |
| XC | 08-10 |
| XC-W/EXC | 08-11 |

772.04.066.100/04

| | |
|-----------|-------|
| SX-F/XC-F | 11-18 |
| SX/XC | 12-18 |

CHAIN SLIDING PROTECTION

Offered in an orange factory look.



515.04.066.000/04

| | |
|-----------------|-------|
| SX (TWO-STROKE) | 11 |
| XC-W/EXC | 12-18 |

CHAIN SLIDING PROTECTION PDS

Offered in an orange factory look.

773.03.053.000/04

| | |
|----------|-------|
| SX | 07-10 |
| XC | 08-10 |
| XC-W/EXC | 08-11 |

772.03.053.000/04

| | |
|---------------|-------|
| 125/150 SX | 11-15 |
| 250/300 SX/XC | 11-16 |
| SX-F/XC-F | 11-15 |
| XC-W/EXC | 12-16 |

790.03.053.000/04

| | |
|---------------|-------|
| 125/150 SX/XC | 16-18 |
| 250/300 SX/XC | 17-18 |
| SX-F/XC-F | 16-18 |
| XC-W/EXC-F | 17-18 |

CHAIN SLIDING PIECE BELOW

Offered in an orange factory look.





573.13.001.000

SUPERMOTO

RADIAL HAND BRAKE CYLINDER

The radial hand brake cylinder with 16 mm piston enables better leverage than conventional brake cylinders. Significantly less hand strength required for the same amount of braking force. Parts required for mounting: Brake fluid reservoir (545.13.030.044) and the associated retaining bracket (573.13.001.050)



594.13.001.000/04

SUPERMOTO

MACHINED HAND BRAKE CYLINDER

The radial hand brake cylinder with 12 mm piston enables better leverage than conventional brake cylinders and is designed for offroad and supermoto use. CNC-machined from solid material and weighing in at only 305 g, it is extremely compact and lightweight. The short lever can be easily adjusted and delivers an extraordinarily precise feeling when applying the brakes. Ideal for use in combination with the 4-piston brake caliper (584.13.015.644 / 04) or the 6-piston brake caliper (594.13.015.044 / 04).

584.13.015.644/04

SX/XC/XC-W

4 PISTON BRAKE CALIPER

KTM brake calipers are distinguished by the following features:

- CNC-machined from high-strength solid aluminum
- Chrome-plated pad guide pins on the brake caliper

The benefits:

- Reduced brake pad canting, hence no uneven wear
- Constant braking feel, irrespective of brake pad wear or temperature
- No vibration from the brake

Fitting possible on SX/EXC models without adapter, with the original hand pump and brake hose.

Can only be fitted with a 17" or 16.5" front wheel; 310 mm brake disc (586.09.060.000) or (250.09.260.000) is also required



594.13.015.044/04

SX/XC/XC-W

6 PISTON BRAKE CALIPER

KTM brake calipers are distinguished by the following features:

- CNC-machined from high-strength solid aluminum
- Chrome-plated pad guide pins on the brake caliper

The benefits:

- Reduced brake pad canting, hence no uneven wear
- Constant braking feel, irrespective of brake pad wear or temperature
- No vibration from the brake

We recommend the use of hand pump (587.13.001.100) and brake hose (594.13.011.000 (SX)) or (800.13.011.000 (EXC)). Can only be fitted with a 17" or 16.5" front wheel; 310 mm brake disc (586.09.060.000) or (250.09.260.000) is also required.



SXS.09.125.512

SUPERMOTO 09–18

FACTORY FRONT BRAKE CALIPER

The Factory front brake caliper is manufactured from high-strength aluminum, providing more braking power without adding any additional weight. The increased stiffness of the brake caliper results in a more precise pressure point and improved brake power.



SXS.07.125.712

SX/XC/XC-W 04–18

FACTORY REAR BRAKE CALIPER

The Factory rear brake caliper is manufactured from high-strength aluminum, providing more braking power without adding any additional weight. The increased stiffness of the brake caliper results in a more precise pressure point and improved brake power. When fitting to SX models as of MY 2013, the CNC brake caliper support (777.13.975.110.30) must be used instead of the supplied brake caliper support due to the larger axle diameter.





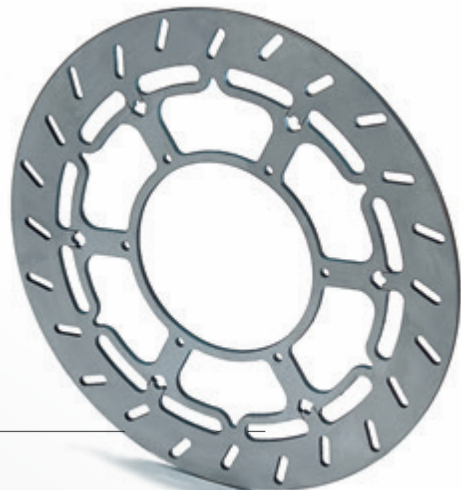
789.09.960.000

| | |
|-------|-------|
| SX/XC | 09-18 |
| XC-W | 10-18 |

FLAME BRAKE DISC

- Diameter 270 mm
- Floating brake disc manufactured from special high-grade stainless steel
- Internal ring made from high-grade aluminum
- Flame design for added braking performance
- Minimum brake pad wear
- Brake caliper support (789.13.914.100) is also required for installation



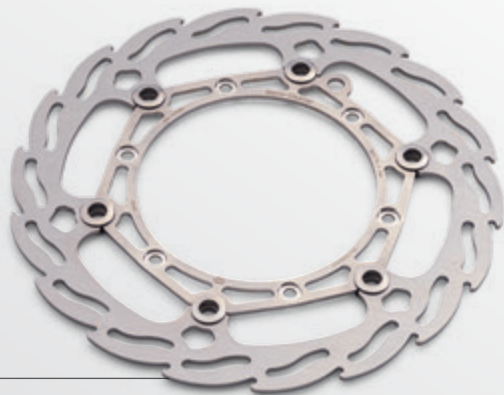


583.09.060.000

SX/XC/XC-W

BRAKE DISC

- Diameter 320 mm
- Extra large for extra-high brake power
- Manufactured from special high-grade stainless steel
- Can only be used in conjunction with standard installed brake caliper, and brake caliper support (584.13.014.000) or (770.13.914.000) is also required for fitting with the standard 2-piston Brembo® brake caliper



USED BY OUR
FACTORY TEAM

781.09.960.000

SX/XC/XC-W

FLAME BRAKE DISC

- Diameter 260 mm
- Floating brake disc manufactured from special high-grade stainless steel
- Flame design for added braking performance
- Minimum brake pad wear



250.09.260.000

WAVE BRAKE DISC

- Diameter 310 mm
- Floating brake disc manufactured from special high-grade stainless steel
- Internal ring made from high-grade aluminum
- Wave design for added braking performance
- Minimum brake pad wear
- Can only be used in conjunction with 4 piston brake caliper (584.13.015.644 / 04) or 6 piston brake caliper (594.13.015.044 / 04)



789.10.960.000

SX/XC 07-18
XC-W 08-18

FLAME BRAKE DISC

- Diameter 220 mm
- Manufactured from special high-grade stainless steel
- Extra thick - i.e. 4.3 mm
- Flame design for added braking performance
- Minimum brake pad wear



781.10.960.000

SX/XC/XC-W

FLAME BRAKE DISC

- Diameter 220 mm
- Manufactured from special high-grade stainless steel
- Flame design for added braking performance
- Minimum brake pad wear



250.10.960.000

SX/XC/XC-W

WAVE BRAKE DISC

- Diameter 220 mm
- Manufactured from special high-grade stainless steel
- Full version for muddy track conditions
- Minimum brake pad wear



590.13.930.100

SX/XC/XC-W/EXC

FRONT BRAKE PADS

- Made from a special material mix with a high proportion of organic substances, creating a softer brake pad
- With ceramic under layer for optimum thermal insulation
- Lower friction coefficient than sintered brake pads, resulting in a less aggressive braking feel
- Beneficial when particularly refined responsiveness is desired for ideal brake application



548.13.990.100

SX/XC/XC-W/EXC 04–18

REAR BRAKE PADS

- Made from a special material mix with a high proportion of organic substances, creating a softer brake pad
- With ceramic under layer for optimum thermal insulation
- Lower friction coefficient than sintered brake pads, resulting in a less aggressive braking feeling
- Beneficial when particularly refined responsiveness is desired for ideal brake application



590.13.930.200

SX/XC/XC-W/EXC

FRONT BRAKE PADS

- 100 % sintered metals
- Very high coefficient of friction for maximum and enduring braking power
- Low “fading” tendency when hot
- Strongly effective braking in the wet as well
- Very hard and therefore extremely long-lasting
- Particularly beneficial in extreme conditions (e.g. sand, gravel, etc.)



548.13.990.200

SX/XC/XC-W/EXC 04–18

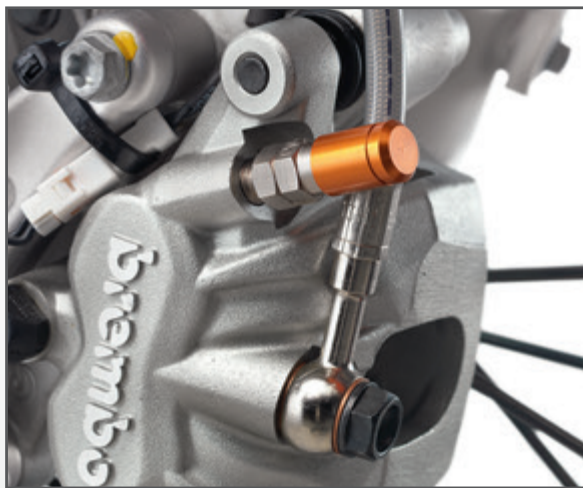
REAR BRAKE PADS

- 100 % sintered metals
- Very high coefficient of friction for maximum and enduring braking power
- Low “fading” tendency when hot
- Strongly effective braking in the wet as well
- Very hard and therefore extremely long-lasting
- Particularly beneficial in extreme conditions (e.g. sand, gravel, etc.)



780.13.920.000

SX/XC 09-18
XC-W/EXC 10-18



BRAKE BLEEDER SCREW

Bleeding the brakes or changing the brake fluid is completed in a matter of seconds, even on your own! First, replace the original bleeder screw on the brake caliper with this new bleeder screw equipped with a check valve. When changing the brake fluid or bleeding the system, simply release the screw on the check valve by a half turn and pump the brake fluid through the system with the brake lever. The valve prevents air from forcing its way back into the system on releasing the brake lever. Supplied with an anodized dust cap.



770.13.920.100

SX/XC/XC-W/EXC

BANJO BOLT WITH BLEEDER FUNCTION

Same as (780.13.920.000), but for the rear brake caliper.



777.13.975.110/30

SX/XC

13-18

BRAKE CALIPER SUPPORT

Lighter and stiffer than the standard brake caliper support. The stiffness has a positive effect on braking power. CNC-machined from the highest grade of aluminum and anodized black. Options available: Carbon brake caliper protection (777.13.975.120) and carbon brake disc protection (777.13.975.030).

781.13.900.100 

250/300 SX/XC/XC-W 04-18

250 SX-F/XC-F 06-12

250 XCF-W 07-18

350 XCF-W 13-18

400/450/500 XCF-W 08-18

LEFT HAND BRAKE KIT

For use with the auto-clutch. Allows braking of the rear wheel with the left hand, hence providing additional control in critical situations (e.g. steep downhill and right hand turns). CLOSED COURSE / COMPETITION USE ONLY!

503.13.082.200

SX/XC/XC-W/EXC 04-18

BRAKE PAD RETAINING PIN

Lost pins are a thing of the past. This retaining pin enables you to quickly change the brake pads.



770.13.914.000

SX/XC 09-18

XC-W/EXC 10-18

BRAKE CALIPER SUPPORT

Required when using the 320 mm brake disc (583.09.060.000) and 2-piston Brembo® brake caliper.



548.12.063.044

SX/XC/XC-W/EXC

REAR BRAKE PEDAL SAFETY WIRE

556.35.941.044

| | |
|-----------------|-------|
| SX-F/XC-F | 16–18 |
| 250/300 XC/XC-W | 17–18 |
| EXC-F | 17–18 |

DIGITAL FAN KIT

Ideal for extreme conditions, this fan ensures more air, better cooling and maximum performance. The digital control allows you to adjust the activation temperature anywhere between 149°F and 203°F, while also continuously displaying the current temperature. The fan automatically shuts off 1°F below the activation temperature. For installation on all models, you will need auxiliary wiring harness (777.11.979.000); Y-distributor (777.11.979.044) can also be installed to add an additional electronic device.



796.35.941.044

| | |
|-------|-------|
| EXC-F | 17–18 |
|-------|-------|

FAN

Replacement fan kit for your EXC-F. Easy plug-and-play installation.





781.35.941.244

| | |
|-----------------|-------|
| 200 XC-W | 13-16 |
| 250/300 XC/XC-W | 08-16 |
| XC-W/EXC | 08-16 |
| XC-F | 08-15 |



DIGITAL FAN KIT

Indispensable in extreme conditions, this fan provides more air, ensuring better cooling and maximum power. With the digital control unit, you can adjust the activation temperature to suit your needs and read the current temperature at any time. The freely selectable activation temperature lies between 149 °F and 203 °F. The deactivation temperature is adjusted automatically and always lies 1 °F below the selected activation temperature. For installation on XC-W/EXC models up to MY 11 auxiliary wiring harness (777.11.979.000) is needed. For MY 14 and later XC-W/EXC, Y-distributor (777.11.979.010) is required for installation. All XC models require auxiliary wiring harness (777.11.979.000) for installation.

812.35.941.144

XCF-W/EXC (FOUR-STROKE) 08–16

FAN

Specifically suited for extreme conditions: for more air, better cooling and maximum power.

551.35.041.044

200 EXC 13–16
250/300 EXC 08–16

FAN

Can only be fitted on 250 EXC MY 08–11 in combination with the e-start kit.

**504.35.924.044/04**

125/150 SX 16–18

554.35.924.044/04

250 SX 17–18

790.35.924.044/04

250/350 SX-F 16–18

794.35.924.044/04

450 SX-F 16–18

ORANGE RADIATOR HOSES

For a higher level of performance and appearance! These reinforced silicon-rubber cooling hoses have been specially developed to withstand extreme pressures and temperatures. The special surface of their rubber compound also improves the flow behavior.

**590.35.041.044**

EXC (FOUR-STROKE) 01–07

FAN

Specially suited for extreme conditions: for more air, better cooling and maximum power.



773.35.034.000/04 ■

773.35.034.000/28 □

773.35.034.000/30 ■

| | |
|---------------|-------|
| 125/150 SX/XC | 07-15 |
| 250/300 SX/XC | 07-16 |
| SX-F/XC-F | 07-15 |
| XC-W/EXC | 08-16 |

RADIATOR LOUVER

Suitable for left and right side.



790.35.134.000/28 □

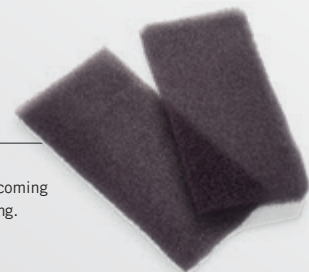
| | |
|-----------------|-------|
| 125/150 SX/XC-W | 16-18 |
| 250/300 SX/XC | 17-18 |
| SX-F/XC-F | 16-18 |
| XC-W/EXC-F | 17-18 |

RADIATOR LOUVER

548.35.980.000

FOAM FOR COOLER

For extremely muddy conditions. Prevents the radiator from becoming clogged with mud and helps prevent the engine from overheating.



790.35.994.000/EB

| | |
|-------------------|-------|
| 250/350 SX-F/XC-F | 16-18 |
| 250/350 EXC-F | 17-18 |

WATER PUMP COVER PROTECTION

The plastic protector prevents damage to the water pump cover and radiator hose in the area of the hose connection.



720.35.994.000/04

| | |
|---------------|-------|
| 250 SX-F/XC-F | 13-15 |
| 350 SX-F/XC-F | 11-15 |
| 250 XCF-W/EXC | 14-16 |
| 350 XCF-W/EXC | 12-16 |

WATER PUMP COVER PROTECTION

The plastic protector prevents damage to the water pump cover and radiator hose in the area of the hose connection.

794.35.935.000 **NEW**

| | |
|---------------|-------|
| 125/150 SX/XC | 16-18 |
| 250/300 SX/XC | 17-18 |
| SX-F/XC-F | 16-18 |
| XC-W/EXC | 17-18 |

RADIATOR PROTECTION SLEEVE

The radiator protection sleeve prevents the radiator guard from becoming clogged with dirt, mud or sand. This helps prevent rapid overheating of the engine.





781.35.936.100

| | |
|--------------------|-------|
| 125/150 SX | 07-15 |
| 250/300 SX/XC/XC-W | 07-16 |
| SX-F/XC-F | 07-15 |
| XCF-W/EXC | 08-16 |

RADIATOR PROTECTION

Reinforcement bar for radiators. Simple fitting. Installation not possible with larger tanks that take the place of the radiator shrouds.



777.35.936.244

| | |
|--------------------|-------|
| 125/150 SX | 11-15 |
| 250/300 SX/XC/XC-W | 11-16 |
| SX-F/XC-F | 11-15 |
| XCF-W/EXC | 12-16 |

ALUMINUM RADIATOR PROTECTION

Made from high-strength aluminum, these provide the maximum amount of protection at the lightest weight possible. Installation not available with larger tanks that take the place of the radiator shrouds.



796.35.936.044 **NEW**

| | |
|---------------|-------|
| 125/150 SX/XC | 16-18 |
| 250/300 SX/XC | 17-18 |
| SX-F/XC-F | 16-18 |
| XC-W/EXC | 17-18 |

RADIATOR PROTECTION

- Made of plastic
- Provides the highest level of protection, at the lowest weight
- Includes specially fitted radiator protection grills

THIS GENERATION OF KTM ALUMINUM SKID PLATES PROVIDE THE MOST EFFECTIVE PROTECTION FOR BOTH FRAME AND ENGINE:

- Spaced from the frame with rubber padding (125/150 SX from MY 16, 250/300 SX/XC from MY 17 and XC-W/EXC-F from MY 17)
- Extremely robust rear fastening clamp
- Made of 4 mm-thick, high-strength, robust aluminum
- Side parts welded from inside and out (as of MY 12)
- Extremely durable and endurance-tested for the toughest offroad use
- Custom design – specifically developed for KTM models
- Highest grade of quality workmanship
- Simple and quick installation

**504.03.990.000**

| | |
|------------|-------|
| 125/150 SX | 16–18 |
| 150 XC-W | 17–18 |

554.03.990.000

| | |
|--------------------|-------|
| 250/300 SX/XC/XC-W | 17–18 |
|--------------------|-------|

SKID PLATE**548.03.990.300**

| | |
|--------------|-------|
| 250 SX | 11–16 |
| 250/300 XC-W | 12–16 |

SKID PLATE

504.03.990.544

125 SX 16-18
150 XC-W 17-18

554.03.990.544

250/300 SX/XC/XC-W 17-18

SKID PLATE



503.03.990.200

125/150 SX 11-15
200 XC-W 12-16

SKID PLATE



551.03.990.200

250 SX/XC 11-16
250/300 XC-W 12-16

SKID PLATE



590.03.990.250

FOAM

When positioned between engine and skid plate, less dirt can accumulate, allowing for better cooling of the engine.

DO YOU KNOW THE BENEFITS OF THE KTM CASE GUARD?

- Prevents damage to the engine case in the event of the chain breaking
- Helps prevent dirt and mud from packing in between the chain and engine case
- CNC-machined from high-strength aluminum
- Best effective protection for the clutch slave cylinder

504.32.975.044

125/150 SX 16–18
150 XC-W 17–18

554.32.975.044

250/300 SX/XC/XC-W 17–18

CASE GUARD



554.37.994.044

250/300 SX/XC/XC-W 17–18

EXHAUST FLANGE GUARD

A must during extreme riding and racing! This exhaust flange guard is designed to provide added strength to the cylinder flange in the event of an unexpected impact to the pipe.

548.32.075.344

250 SX 07–10
250/300 XC/XC-W 08–16

CASE GUARD



503.03.190.100

125/150 SX 11–15

548.03.190.100

250 SX 11–16

250/300 EXC 12–16


SKID PLATE WITH QUICK-FASTENER

504.03.090.044

150 XC-W 17–18

554.03.090.044

250/300 XC-W 17–18

792.03.090.044

250/350 EXC-F 17–18

796.03.090.044

450/500 EXC-F 17–18


SKID PLATE

Composite skid plates combine a number of special features:

- Manufactured with ultra-modern two-component injection molding technology
- Made from special high-strength composites
- Rubber inserts around the contact surfaces between the skid plate and frame for improved protection
- Incredibly easy installation by mounting directly to the frame with no brackets
- Developed for use on the most rugged offroad terrain
- Maximum protection with the lightest weight possible

NEVER RIDE WITHOUT ONE! KTM PLASTIC SKID PLATES COMBINE MANY SPECIAL FEATURES:

- Manufactured using state-of-the-art plastic injection moulding technology
- Made from special high-strength plastic
- Revised, extremely tough fastening system
- Developed for use in the toughest offroad terrain
- Maximum protection with the lightest weight possible
- Custom – specially developed for KTM models
- Simple installation is made possible with the use of a special quick-release mechanism

775.03.190.000

250 SX-F/XC-F 13–15

350 SX-F 11–15

250 XCF-W/EXC-F 14–16

350 XCF-W/EXC-F 12–16

781.03.190.100

450 SX-F/XC-F 13–15

450/500 XCF-W/EXC 12–16


SKID PLATE WITH QUICK-FASTNER

DO YOU KNOW THE BENEFITS OF THE KTM CASE GUARD?

- Prevents damage to the engine case in the event of the chain breaking
- Helps prevent dirt and mud from packing in between the chain and the engine case
- CNC-machined from high strength aluminum
- Best effective protection for the clutch slave cylinder

790.32.975.044

250/350 SX-F/XC-F 16–18
250/350 EXC-F 17–18

794.32.975.044

450 SX-F/XC-F 16–18
450/500 EXC-F 17–18

CASE GUARD



775.32.975.044

250 XCF-W 14–16
350 XCF-W/EXC 12–16

781.32.975.044

450 SX-F 13–15
450/500 XCF-W/EXC 12–16

CASE GUARD



THIS GENERATION OF KTM ALUMINUM SKID PLATES PROVIDE THE MOST EFFECTIVE PROTECTION FOR BOTH FRAME AND ENGINE:

- Spaced from the frame with rubber padding (SX-F/XC-F as of model year 16, EXC-F as of model year 17)
- Extremely robust rear fastening clamp
- Made of 4 mm-thick, high-strength, robust aluminum
- Side parts welded from the inside and outside (as of model year 12)
- Extremely durable and endurance tested for the toughest offroad use
- Custom design - specifically developed for KTM models
- Highest grade of quality workmanship
- Simple and quick installation

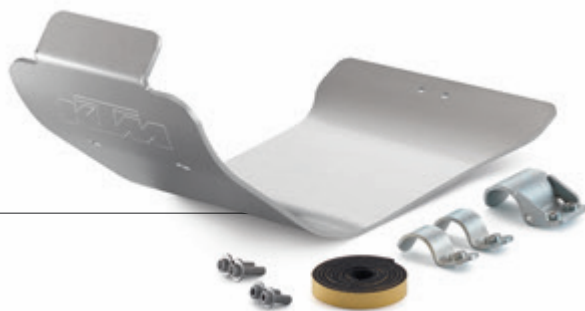
772.03.990.200

250/350 SX-F/XC-F 11-15
250/350 XCF-W/EXC 12-16

789.03.990.000

450 SX-F/XC-F 13-15
450/500 XCF-W/EXC 12-16

SKID PLATE



774.03.990.100

250/350 SX-F/XC-F 11-15
250/350 XCF-W/EXC 12-16

781.03.990.100

450 SX-F/XC-F 13-15
450/500 XCF-W/EXC 12-16

SKID PLATE



790.03.990.000

250/350 SX-F/XC-F 16-18
250/350 EXC-F 17-18

794.03.990.000

450 SX-F/XC-F 16-18
450/500 EXC-F 17-18

SKID PLATE



UPP.15.03.020 ■

250/350 SX-F/XC-F 16-18
250/350 EXC-F 17-18

UPP.15.03.020.EB ■

250/350 SX-F/XC-F 16-18
250/350 EXC-F 17-18

UPP.15.03.040 ■

450 SX-F/XC-F 16-18
450 EXC-F 17-18

UPP.15.03.040.EB ■

450 SX-F/XC-F 16-18
450 EXC-F 17-18



FACTORY SKID PLATE

Developed by KTM for a precise fit and finish.

- Form fitted to the frame and cases for minimal weight and maximum protection
- Ultra secure "stay-in-place" dual bracket system for easy installation and removal
- Protects frame and vital engine components
- High impact, durable and shock resistant
- Quick and easy installation
- Proudly made in the USA

590.03.990.250

FOAM

When positioned between engine and skid plate, less dirt can accumulate, allowing for better cooling of the engine.



THIS GENERATION OF KTM ALUMINUM SKID PLATES PROVIDE THE MOST EFFECTIVE PROTECTION FOR BOTH FRAME AND ENGINE:

- Spaced from the frame with rubber padding (SX-F/XC-F as of model year 16, EXC-F as of model year 17)
- Extremely robust rear fastening clamp
- Made of 4 mm-thick, high-strength, robust aluminum
- Extremely durable and endurance-tested for the toughest offroad use
- Custom design - specifically developed for KTM models
- Highest grade of quality workmanship
- Simple and quick installation

790.03.990.544

250/350 SX-F/XC-F 16–18
250/350 EXC-F 17–18

794.03.990.544

450 SX-F/XC-F 16–18
450/500 EXC-F 17–18

SKID PLATE





CLUTCH COVER PROTECTION

- Made from plastic
- Optimum protection against roost
- Protects against the cover from being dented by the brake lever in the event of a minor fall
- For the original outer clutch cover

792.30.994.000/EB

250/350 SX-F/XC-F 16–18
250/350 SX-F/XC-F 17–19

CLUTCH COVER PROTECTION



775.30.994.000/04

250 SX-F/XC-F 13–15
350 SX-F/XC-F 11–15
350 XCF-W/EXC-F 12–16

CLUTCH COVER PROTECTION



794.30.994.000/EB ■

794.30.994.000/30 ■

450 SX-F/XC-F 16–18
450/500 EXC-F 17–18

CLUTCH COVER PROTECTION





(A)



(B)



5200.0092

ALL USD FORKS Ø 48 MM (A)

5200.0093

ALL USD FORKS Ø 48 MM (B)

FORK PROTECTION STICKER SET

Extra thick film; protects the outer fork tubes against roost.

781.11.994.000

XC-W/EXC

14 – 16

HEADLAMP GRID

Effective and simple-to-fit headlamp grill made from transparent plastic.



595.04.090.050

SX/XC/XC-W/EXC

NEOPRENE PDS PROTECTION

Special protection means less dirt and lengthens the service life of the lower PDS bearing.



780.01.095.000

NEOPRENE FORK COVER

The perfect protection for your fork; for use with the closed fork protector.



796.01.994.000 **NEW**

SX/XC 15-18
XC-W/EXC 16-18

FORK SHOE PROTECTION KIT

- Protects fork shoes from damage
- Made from plastic



595.01.095.000 48 MM

595.01.095.100 43 MM

NEOPRENE FORK COVER

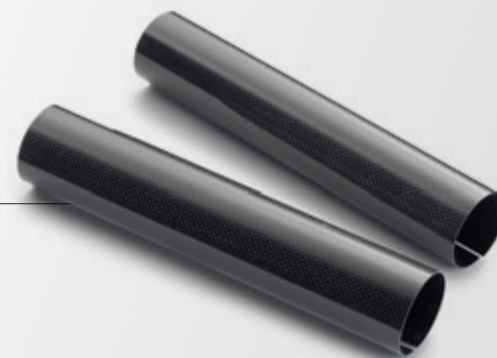
- Made from neoprene
- Ideal protection for sealing the fork
- For use with the open fork protector



790.01.994.000/49

FORK PROTECTION SET

- Manufactured from carbon
- Optimum protection against roost
- Made to fit all 48 mm forks



PROTECTION

CHASSIS



781.04.974.100

SX/XC 07-18
X-CW/EXC 08-18

CHAIN GUIDE BRACKET PROTECTION

Manufactured from high-strength aluminum. Protects the chain guide bracket from major damage. Cannot be used in combination with the T.M. Designworks chain guide.



777.09.945.000

SX 15-18
XC-W/EXC 16-18

781.09.945.000

SX/XC -14
XC-W/EXC -15

22 MM

26 MM



FRONT SLIDE PADS

Protects the fork from damage in the event of a slide.

772.04.994.100/30

SX/XC (TWO-STROKE) 12-18
SX-F/XC-F (FOUR-STROKE) 11-18

781.04.994.100/30

SX/XC (TWO-STROKE) 11
XC-W/EXC 12-18

SWINGARM PROTECTION

Made from plastic, the swingarm protector protects the swingarm from damage. The benefit: An undamaged and visually appealing swingarm, resulting in a positive effect on the resale value of your motorcycle. When fitting to 125/150 SX 16-18 and SX-F/XC-F 16-18 models, brake line guide (765.04.042.000) is also required.



781.10.945.100

SX/XC/XC-W/EXC 12-18

REAR SLIDE PADS

Protects the swingarm in the event of a slide.



794.03.994.100 ■

794.03.994.100/30 ■

794.03.994.100/EB ■

| | |
|--------------------|-------|
| 125/150 SX/XC | 16-18 |
| 250/300 SX/XC/XC-W | 17-18 |
| SX-F/XC-F | 16-18 |
| EXC | 17-18 |

772.03.994.000/30 ■

| | |
|--------------------|-------|
| 125/150 SX | 11-15 |
| 250/300 SX/XC/XC-W | 11-16 |
| SX-F/XC-F | 11-15 |
| XC-W/EXC | 12-16 |

FRAME DECALS

For protecting your frame without altering the slender profile of your bike.



790.03.094.000/EB ■

790.03.094.000/33 ■

| | |
|------------|----|
| 125/150 SX | 16 |
| SX-F/XC-F | 16 |

772.03.094.000/04 ■

772.03.094.000 ■

| | |
|---------------|-------|
| 125/150 SX | 11-15 |
| 250/300 SX/XC | 11-16 |
| SX-F/XC-F | 11-15 |
| XC-W/EXC | 12-16 |

FRAME PROTECTION SET

Prevents damage to the powder coating by dirt, crashes and the rider's boots. Also protects pants and boots from burns on the exhaust side.



777.13.975.120

**BRAKE CALIPER PROTECTION**

- Manufactured from carbon
- Optimum protection against roost
- Can be fitted on CNC brake caliper supports (777.13.975.010.30, 777.13.975.110.30, 781.13.975.044, 781.13.975.144, 781.13.975.244, 789.13.975.044 or 789.13.975.144)

777.13.975.030

**BRAKE DISC PROTECTOR**

Protects the rear brake disc from roost and other solid objects while maintaining minimal weight. Designed to fit on CNC brake caliper support (777.13.975.010 / 30 or 777.13.975.110 / 30)

548.10.961.200/04 ■

548.10.961.200/30 ■

SX/XC/XC-W/EXC 04-18



REAR BRAKE DISC GUARD

Protects the rear brake disc from roost and other solid objects.
Made of high-strength aluminum.

U690.7872

SX/XC 04-12

XC-W/EXC 04-18

U691.3130

SX/XC 13-18



REAR BRAKE DISC GUARD

High-quality billet aluminum disc guard with replaceable fin. Helps protect rear brake disc from rocks and debris. Replaces stock brake caliper carrier. Replacement fin (U690.9881) is also available.

781.13.975.244

SX/XC 04-12

XC-W/EXC 04-18

789.13.975.144

SX/XC 13-18



BRAKE CALIPER SUPPORT WITH BRAKE DISC GUARD

The integrated brake disc guard protects the rear brake disc from roost and other solid objects. The brake caliper support is lighter and stiffer than the standard version. The stiffness has a positive effect on such braking properties as braking power and application. CNC-machined from the highest grade of aluminum and anodized black and orange. Carbon brake caliper protection (777.13.975.120) is also available, as an option.



790.09.961.000/30

SX/XC 15-18

XC-W/EXC 16-18

UP TO 260 MM BRAKE DISC

780.09.061.100/30

SX/XC 04-14

XC-W/EXC 04-15

UP TO 260 MM BRAKE DISC

FRONT BRAKE DISC GUARD

Very practical: The intelligent fitting system with a central adapter replaces the spacer sleeve on the wheel axle and allows the tire to be changed, brake to be serviced, etc., without removing the brake cover.



548.03.047.000

| | |
|---------------|-----|
| 125/150 SX | -15 |
| 250/300 SX/XC | -16 |
| SX-F/XC-F | -15 |
| XC-W/EXC | -16 |

FOOTPEG SLIDERS

Fiberglass reinforced plastic. Protects the footpegs from damage during a slide. Mountable on all motorcycles with footpegs (590.03.041.250 / 780.03.041.050) right, and (590.03.040.250 / 780.03.040.050) left.



781.08.999.020

TRIPLE CLAMP PROTECTIVE STICKER KIT

Extra thick film protects the triple clamp from stone impacts. For use with Factory triple clamps (SXS.13.450.460 and SXS.13.450.470), as well as triple clamp (781.01.999.020 / 04 and 781.01.999.022 / 04)



790.03.944.044

| | |
|---------------|-------|
| 125/150 SX | 16-18 |
| 250/300 SX/XC | 17-18 |
| SX-F/XC-F | 16-18 |

FOOTPEG SLIDERS

Fiberglass reinforced plastic. Protects the footpegs from damage in the event of a slide. Can be fitted to all motorcycles with footpegs (790.03.041.000) on the right, and (790.03.040.000) on the left.

U690.8818

EXC

LICENSE PLATE HOLDER

Recommended bracket for mounting the license plate onto your street legal EXC. Features multiple bolt patterns to accommodate license plates from any state.







772.06.917.050/04

| | |
|--------------------|-----|
| 125/150 SX | -15 |
| 250/300 SX/XC/XC-W | -16 |
| SX-F/XC-F | -15 |
| XCF-W/EXC | -16 |



AIR FILTER RETAINING BUSHING

Small part with a big impact. This threaded air filter retaining bushing ensures your filter stays in place during the most extreme conditions.

790.06.922.000

| | |
|--------------------|-------|
| 125/150 SX/XC-W | 16-18 |
| 250/300 SX/XC/XC-W | 17-18 |
| SX-F/XC-F | 16-18 |
| EXC-F | 17-18 |

590.06.922.000

| | |
|---------------|-------|
| 125/150 SX | 98-15 |
| 250/300 SX/XC | 98-16 |
| SX-F/XC-F | 98-15 |
| XC-W/EXC | 98-16 |



SAND COVER FOR AIR FILTER

Recommended for use on sandy tracks. Suggested installation together with oiled air filter and dry dust guard (590.06.019.000, 772.06.920.100, 790.06.920.000 or 472.06.920.000).

790.06.921.000

| | |
|--------------------|-------|
| 125/150 SX/XC-W | 16-18 |
| 250/300 SX/XC/XC-W | 17-18 |
| SX-F/XC-F | 16-18 |
| EXC-F | 17-18 |

772.06.921.100

| | |
|----------------|-------|
| 125/150 SX/XC | 11-15 |
| 250 SX/XC/XC-W | 11-16 |
| XCF-W/EXC | 12-16 |



RAIN COVER FOR AIR FILTER

Recommended in extremely wet conditions.

790.06.920.000

| | |
|--------------------|-------|
| 125/150 SX/XC | 16-18 |
| 250/300 SX/XC/XC-W | 17-18 |
| SX-F/XC-F | 16-18 |
| EXC-F | 17-18 |

772.06.920.100

| | |
|--------------------|-------|
| 125/150 SX | 11-15 |
| 250/300 SX/XC/XC-W | 11-16 |
| XCF-W/EXC | 12-16 |



DUST COVER FOR AIR FILTER

This large-pored air filter cover acts as an additional protective layer, hence extending the time between filter service intervals. Recommended in extremely dusty conditions.

781.12.978.100

XC-W / EXC-F 04 – 18

UNIVERSAL BAG

The robust, waterproof bag can be fitted easily and without additional installation materials. The volume of the bag is approx. 5 liters, thereby providing enough space for the most important things on your offroad tour. For use on FREERIDE models, rear rack (720.12.927.044) is also required.



620.02.903.150

GPS/PDA BAG LARGE

Keeps documents, maps, navigation and communication equipment (e.g., cellphone) dry and protected against vibration in your field of vision.

– Suitable for all KTM GPS holders

– Size: 170 x 130 x 35 mm

Bracket (620.02.903.100) is required for mounting.



620.12.092.044

SX / XC / XC-W / EXC

MOUNTING FOR GPS/PDA BAGS

Universal mount for GPS brackets.



930.02.903.100

SX / XC / XC-W / EXC

BRACKET FOR GPS/PDA BAGS

Only for use on original handlebar mounting.



601.12.092.070

HANDLEBAR CROSS BRACE

Universally applicable option for mounting the GPS bracket.





548.02.021.100

HALF-WAFFLE MEDIUM GRIP SET

548.02.021.000

HALF-WAFFLE SOFT GRIP SET

The special half-waffle grip has been developed to meet the demands and preferences of our Factory riders, with the clear objectives: comfort AND safety – because no calluses on the palms and secure grip mean less stress when riding.

The benefits:

- Ergonomic; contour matched to the shape of the hand for maximum comfort
- Small “half-waffle” ribs on the rear for a secure grip
- Made from two materials with different grades of hardness
- Available in two versions (soft and medium)
- Three areas for securing safety wire



U695.1716

GRIP DONUT SET

Optimum protection against thumb blisters with these coated neoprene rings. Simply slide onto the grips.

630.02.021.100

DUAL COMPOUND GRIP SET

The KTM 2K (2K = 2 different materials) grip combines the durability of KTM standard grips and the comfort of the soft KTM grips.

- Harder orange material on the inside and at the grip ends for a long service life
- Softer black material on the outside, where the hand lies on the grip, for increased comfort

630.02.021.200

DUAL COMPOUND OPEN GRIP SET

Same as the dual compound grip set (603.02.021.100), but with open grip ends for closed handguards or bar ends.



781.02.922.000

MUD GRIPS

The mud grips are simply pulled over the existing grips and provide a secure hold on the grip in extremely muddy conditions, thanks to their special material mix.



781.02.924.000

LOCK-ON GRIP SET

- Grip replacement made easy
- Left grip with aluminum clamping ring for fixing onto the handlebar
- Laborious process of gluing and securing grips with safety wire no longer necessary

773.11.953.000

LITHIUM ION BATTERY 5S

The following benefits are the mark of our lithium-ion batteries:

- 2.2 lbs. lighter than the standard battery (773.11.053.000)
- 3.5 lbs. lighter than the standard battery (585.11.053.000)
- Unbeatable cost / weight saving ratio
- Mountable in any position, as it does not contain acid

Technical data:

- 12 V maintenance-free lithium-ion battery
- Capacity 1.2 Ah
- Recommended charging current - 2.5 amps
- Maximum charge current for fast charging - 12 amps
- Fast charge with high charging current (up to 90 % in 6 min)
- Very low self-discharge (max. 5 % per month)
- Balanced discharge / charge of all cells through balancer
- Contains no heavy metals

When mounting on SX-F models from 2016 on later, the battery compartment (790.11.955.044) is also required.







720.02.931.144/04

FLEX CLUTCH LEVER

Minimize the possibility of a broken lever with these levers that are designed to fold away upon contact with the ground.

720.13.902.144/04

FLEX BRAKE LEVER

Minimize the possibility of a broken lever with these levers that are designed to fold away upon contact with the ground.

781.12.916.000

FRONT STRAP

- High-strength nylon strap
- Indispensable for use on extreme terrain
- Attaches to fork tubes



777.02.944.000

CLAMP WITH SLIDE INSERT

The CNC-machined clamp and its plastic insert are designed in such a way that the brake and clutch controls twist in the event of a minor fall, thereby reducing the risk of a lever breaking. Fits all Brembo® brake and clutch controls.



HIGH VERSION603.02.179.000/EB 603.02.179.100/28 603.02.179.100/30 **HANDGUARD KIT**

The closed, two-component plastic handguards developed by KTM feature a black center section that offers maximum strength for optimum protection. The colorful upper and lower parts are highly flexible to endure even the roughest of treatment without complaint. Available in two different heights.

LOW VERSION780.02.079.100/04 780.02.079.200/28 780.02.079.200/30 **HANDGUARD KIT**796.02.979.044 **NEW****WRAP-AROUND HANGUARD KIT**

- Made of sturdy plastic
- Converts the originally open handguards into a closed version
- Also compatible with handguards (796.02.979.000.EB / 28 / 30 and 721.02.979.000.EB / 28 / 30)





765.02.979.000/04 ■

765.02.979.000/28 □

765.02.979.000/30 ■

HANDGUARD KIT

These handguards developed especially for KTM bikes are an indispensable companion for serious offroad and supermoto use. The wide, spacious design ensures excellent mobility and maximum protection against impact, roost, branches, etc. Cannot be fitted with Renthal Twinwall handlebar.



721.02.979.000/EB ■ **NEW**

721.02.979.000/28 ▣ **NEW**

721.02.979.000/30 ■ **NEW**

HANDGUARD KIT

- Open version
- Manufactured with two-component injection molding technology
- Black mid-section = maximum strength for optimum protection
- Colored top and bottom parts = highly flexible, enduring even the roughest of treatment
- Attached directly at the levers with a special mounting



515.39.974.200 

MAP SWITCH

Ignition curve adjustments made easy! With this switch, you can change the ignition curve conveniently from the handlebar on models featuring a digital box with pre-programmed ignition curves. (Whether or not your KTM has pre-programmed ignition curves can be found in the motorcycle owner's manual).

CLOSED COURSE / COMPETITION USE ONLY!



SXS.07.125.200

PHDS - PROGRESSIVE HANDLEBAR DAMPING SYSTEM

The CNC-machined handlebar mounting with cushioning rubber inserts relieves wrist and shoulder joints.

Further benefits of the PHDS:

- Cushioning of heavy hits
- Absorption of vibration from chassis and engine
- Additional handlebar damping in horizontal direction
- Optimum steering precision
- Handlebar height adjustable to 2 positions
- Additional damping elements available in three degrees of hardness (soft, medium, hard) for individual customization

PHDS bar pad (SXS.07.250.800)

Replacement elastomers available: Green (SXS.05.125.203) Soft, Yellow (SXS.05.125.204) Standard, Red (SXS.05.125.205) Hard



789.01.939.044 32 MM
 789.01.939.144 37 MM
 789.01.939.244 42 MM
 789.01.939.344 47 MM
 789.01.939.444 52 MM

HANDLEBAR MOUNT

Available in five different heights. Kit includes 2 x handlebar support lower parts and 2 x fastening bolts. Please note, upper parts and bolts required for clamping the handlebar are taken from the original handlebar support.



772.02.002.144

BAR PAD

Provides optimum protection.
 Required at most events.



777.01.939.010 10 MM
 777.01.939.020 20 MM
 777.01.939.030 30 MM

HANDLEBAR RISER

These CNC-machined, high-strength aluminum handlebar risers are extremely robust thanks to their special screw fastening (from below) on the triple clamp. Twisting and bending are therefore practically impossible. Use of these handlebar risers is only possible on CNC-machined triple clamps. Available in three different heights.



548.02.005.000

BAR ENDS

Protects grip ends from grazing
 in the event of a fall.



502.12.040.000/30 

RACING MIRROR

Left-hand version, light and robust.
 CLOSED COURSE/COMPETITION USE ONLY!

DID YOU KNOW THAT ALL KTM CNC PARTS ARE MANUFACTURED FROM THE HIGHEST GRADE OF ALUMINUM AND THEREFORE NOT ONLY LOOK GOOD, BUT ALSO WITHSTAND THE TOUGHEST TREATMENT?

With the anodized aluminum components in the original factory look from the KTM PowerParts range, you can turn your KTM into something very special.

700.13.903.000

HAND BRAKE CYLINDER COVER



720.02.903.000

HYDRAULIC CLUTCH COVER



548.13.951.100

STEP PLATE FOR BRAKE LEVER

7 mm wider contact surface than standard.



777.34.931.144

STEP PLATE FOR SHIFTING LEVER

5 mm wider contact surface than standard.



794.30.920.044

FACTORY OIL PLUG



700.07.025.050/28 ☐
 700.07.025.050/30 ☒ **NEW**

BATTERY COVER LEFT

700.07.025.051/28 ☐
 700.07.025.051/30 ☒ **NEW**

BATTERY COVER RIGHT

471.08.010.000/28 ☐

FRONT FENDER

700.08.041.000/28 ☐

SIDE PANEL LEFT

700.08.042.000/28 ☐

SIDE PANEL RIGHT

700.08.002.000/28 ☐

HEADLIGHT MASK

700.08.054.000/28 ☐

SHROUD SET

471.01.094.000/04 ☒

471.01.094.000/28 ☐

FORK PROTECTION SET

700.08.113.100/28 ☐

REAR FENDER



725.08.190.000
 FREERIDE 250 R -17

RACE LINE GRAPHICS KIT



725.08.190.100
 FREERIDE E -17

FACTORY GRAPHICS KIT

700.07.040.000

FREERIDE 250 R -17
FREERIDE E -17

LOW SEAT

Provides shorter riders with optimum control of the motorcycle in difficult terrain.
Approx. 7 mm lower than the standard seat.

700.07.940.000

FREERIDE 250 R -17
FREERIDE-E -17

SOFT SEAT

Particularly elastic foam for extra comfort. Approx. 7 mm higher than the standard seat.



725.12.955.044 -25 MM

FREERIDE 250 R -17
FREERIDE E -17

LOW SUSPENSION KIT

The low suspension kits specially developed by KTM in collaboration with WP Suspension are the perfect compromise between maximum chassis performance and minimum possible seat height. Just like the standard parts, the components used here are manufactured from the highest quality of materials and have been specially tuned for offroad use in intensive endurance tests. To ensure the best possible function of these suspension kits, we only recommend use with a rider weight of up to 150 lbs.



720.12.927.044

FREERIDE 250 R -17

REAR RACK

Reinforcement for the rear end of your FREERIDE. Rear rack required when using universal rear bag 5 L (781.12.978.100).





780.03.940.244

PIVOT PEGZ

Ingenious: Footpegs that move with you when you shift your weight. Developed and tested by KTM professional riders. Ideal for all types of riding and racing.

The benefits:

- Spring-mounted, 20° rotational movement possible towards front and rear
- More control and grip in the corners thanks to the maneuverability
- Large tread surface area of 60 mm
- Simpler and quicker weight shifting
- Gear changing and braking made easier
- Permanent contact between boot and footpeg: extends the service life of your boots!

Replacement parts available: Spring kit (780.03.940.020) and overhaul kit (780.03.940.030)



777.10.976.050/04

VALVE CAP SET

Orange anodized valve caps with built in valve stem puller.



777.10.976.150/04

VALVE CAP SET



780.09.099.000



RIM STICKER SET

- For wheel size 18/21"; 19/21"
- Orange, pre-cut sticker
- Suitable for front and rear rim

781.09.999.000



RIM STICKER SET

- For wheel size 18/21"; 19/21"
- Pre-cut sticker
- Suitable for front and rear rim



U695.1087

HUB DECAL KIT

Consists of 4 pieces 37 x 31 mm and 4 pieces 48 x 40 mm.

781.01.900.100



BLEEDER VALVE SET

Bleeder valves designed especially for WP Suspension forks.
A quick press of the finger and the fork is bled.



472.09.960.000 **NEW**

FREERIDE 250 R -17

WAVE BRAKE DISC

- Diameter 260 mm
- Floating brake disc manufactured from special high-grade stainless steel
- Wave design for added braking performance
- Minimum brake pad wear
- Front brake caliper mounting kit (720.09.960.044) is also required for mounting



700.10.160.000

FREERIDE 250 R -17

WAVE BRAKE DISC

- Diameter 230 mm
- Manufactured from special high-grade stainless steel
- Minimum brake pad wear
- Rear brake caliper mounting kit (720.10.960.044) is also required for mounting



725.13.975.000/30

BRAKE CALIPER SUPPORT

Lighter and stiffer than the standard brake caliper support. The stiffness has a positive effect on braking power. CNC-machined from the highest grade of aluminum and anodized black. Options available: Carbon brake disc protection (777.13.975.030).



777.13.975.030

BRAKE DISC PROTECTOR

Protects the rear brake disc from roost and other solid objects while maintaining minimal weight. Designed to fit on CNC brake caliper support (777.13.975.010/30 or 725.13.975.000/30).



781.04.070.100/04

CHAIN GUIDE



FREERIDE



720.10.951.046/04 T46

720.10.951.048/04 T48

REAR SPROCKET ORANGE

This rear sprocket not only looks cool, it also provides the following benefits:

- Manufactured from high-strength 7075-T6 aluminum, the strongest aluminum in the world
- Chain runs to an accuracy of 0.002 mm
- No small stones or dirt particles can become stuck under the chain thanks to angled recesses between the teeth
- All these properties mean lower wear and extreme durability
- Orange anodized with a permanent, organic and environmentally friendly pigment



720.35.936.000

FREERIDE 250 R –17

RADIATOR PROTECTION

Perfect protection for radiators. Simple fitting.

THE KTM ALUMINUM SKID PLATES PROVIDE THE MOST EFFECTIVE PROTECTION FOR BOTH FRAME AND ENGINE:

- Made from 4 mm-thick, high-strength, robust aluminum
- Side parts welded from inside and out
- Extremely durable and endurance-tested for the toughest offroad use
- Custom design - specifically developed for KTM FREERIDE models
- Highest grade of quality workmanship
- Quick and simple installation



725.03.990.000

FREERIDE 250 R –17

SKID PLATE

DO YOU KNOW THE BENEFITS OF THE KTM CASE GUARD?

- Prevents damage to the engine case in the event of the chain breaking
- Helps prevent dirt and mud from packing in between the chain and engine case
- CNC-machined from high-strength aluminum
- Best effective protection for the clutch slave cylinder

725.32.975.044

FREERIDE 250 R –17

CASE GUARD



720.10.961.000

FREERIDE 250 R –17

REAR BRAKE DISC GUARD

Protects the rear brake disc from roost and other solid objects.
Made of high-strength aluminum.

725.06.920.003

FREERIDE 250 R –17

PRE-OILED

DUST COVER FOR AIR FILTER

This large-pored air filter cover acts as an additional protective layer, hence extending time between filter service intervals.
Recommended in extremely dusty conditions.



720.03.994.000

FRAME DECALS

For protecting your frame without altering the slender profile of your bike.



720.09.961.000

FREERIDE 250 R 17

FRONT BRAKE DISC GUARD

Very practical: The intelligent fitting system with a central adapter replaces the spacer sleeve on the wheel axle and allows the tire to be changed, brake to be serviced, etc., without removing the brake cover.



470.01.099.020/04 20 MM OFFSET
85/105 SX 03-17

FACTORY TRIPLE CLAMP

- Manufactured from the highest grade of aluminum
- Optimally tuned steering stem stiffness
- 100% alignment to the fork tubes
- Perfect flexibility - adapted precisely to the KTM WP Suspension forks
- With longer offset (20 mm): faster and tighter - steering onto corners
- Includes steering stem with steering head bearing already pressed on

460.01.999.022/04 22 MM OFFSET
65 SX 12-18

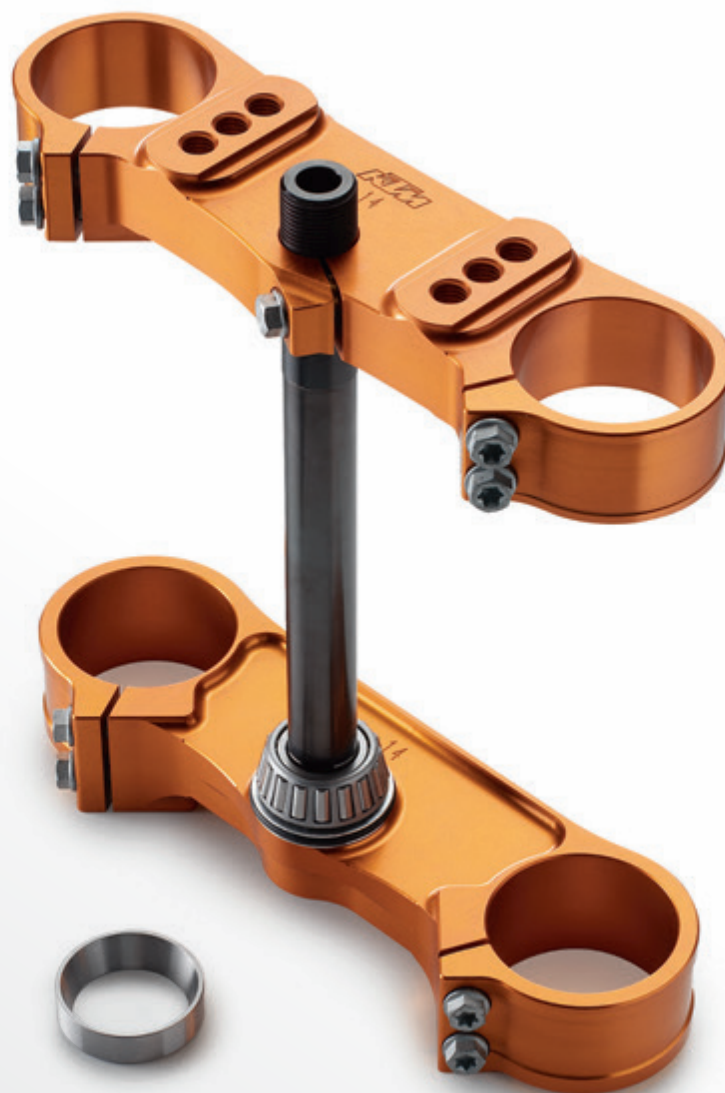
471.01.999.114/04 14 MM OFFSET
85 SX 18

NEW

471.01.999.014/04 14 MM OFFSET
85/105 SX 03-17

FACTORY TRIPLE CLAMP

- Manufactured from the highest grade of aluminum
- Optimally tuned steering stem stiffness
- 100% alignment to the fork tubes
- Perfect flexibility - adapted precisely to the KTM WP Suspension forks
- Includes steering stem with steering head bearing already pressed on



463.01.996.000

65 SX 02-18

470.01.996.000

85/105 SX

FACTORY START

The factory start is mounted directly onto the fork. Before the start, the fork is compressed and secured into the desired position to shift the center of gravity forward. This helps prevent the front wheel from lifting at the start, thus providing greater traction and perhaps securing you the holeshot. The first time the fork dips, it releases automatically and you're READY TO RACE!



471.04.905.000

85 SX 14-17

PRE-LOAD ADJUSTER REAR SHOCK

Quick, precise chassis adjustments and improved appearance with the pre-load adjuster for the rear shock.

The main benefits:

- Quick pre-load adjustment
- Use of the entire thread length on the shock absorber
- Very simple to use
- Lightweight
- Dust-resistant
- Mechanical drive mechanism

* Shock must be disassembled for installation.



SXS.15.085.044

85 SX 13–17

FACTORY CYLINDER HEAD WITH VARIABLE COMBUSTION CHAMBER

The Factory cylinder heads with variable combustion chamber are a must-have for every racer. The aluminum alloys and optimized combustion chamber shapes employed ensure the best possible heat dissipation. This has a positive effect on power delivery and reduces material wear in the combustion chamber and on the piston. Replacement of the whole head is now no longer necessary – simply put in a new combustion chamber insert and off you go again. To increase the performance of your bike even further, we recommend a combination of the Factory cylinder heads with the following parts:

- Factory CDI unit
- Factory exhaust system

Supplied without combustion chamber insert.

IMPORTANT:

When it comes to carburetor jetting, we recommend use of your vehicle's standard jets. Detailed information about carburetor jets is available from your authorized KTM dealer.



SXS.13.085.081

85 SX 13–17

FACTORY CYLINDER HEAD COMBUSTION CHAMBER INSERT EXTREME

This combustion chamber insert is made from a specially developed alloy. The excellent conductivity of this alloy increases the performance of your engine in extreme operations, especially if your engine has to deliver full performance (e.g. with high ambient temperatures, sandy track conditions or other extreme situations).



461.31.917.000

65 SX 04–18

IDLING AIR ADJUSTMENT SCREW

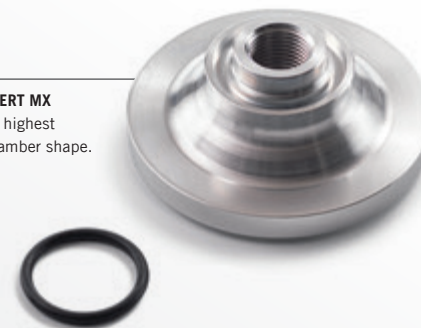
The larger outer diameter of the screw head counteracts the effect of soiling in the adjustment screw channel. Furthermore, the screw is longer and easier to access for setting the idle mixture on the carburetor.

SXS.13.085.061

85 SX 13–17

FACTORY CYLINDER HEAD COMBUSTION CHAMBER INSERT MX

Combustion chamber insert manufactured from the highest grade of aluminum, with a standard combustion chamber shape.





SXS.16.105.000

85 SX 13-17

105 FACTORY KIT

Big Bore kit with more capacity (105 instead of 85). Includes both the factory cylinder head with variable combustion chamber and the MX combustion chamber insert, this kit combines the advantages of serious torque and top performance with the advantages of the Factory cylinder head with variable combustion chamber.



SXS.13.065.007

65 SX 09-18

FACTORY CYLINDER KIT

This complete cylinder kit consists of individual components specially machined to minimum tolerances. This provides more power throughout the entire rev range.



452.12.948.244

50 SX MINI 14-18

POWER REDUCTION KIT

With this, racers of the future can ride their first laps safely. Reduces the power by approx. 70 %.



452.12.948.344

50 SX 14-18

POWER REDUCTION KIT

With this, racers of the future can ride their first laps safely. Reduces the power by approx. 70 %.



SXS.09.050.500 

50 SX 09–18

FACTORY PIPE

- Made from high quality, extra strong and durable sheet steel
- Nickel-plated, stainless, polished surface
- More traction and better control when accelerating
- Includes O-rings
- Recommended in combination with an FMF silencer for a perfectly tuned and performance optimized system

CLOSED COURSE / COMPETITION USE ONLY!



SXS.11.150.505 

50 SX 09–16

SXS.11.065.505 

65 SX 09–15

SXS.13.085.505 

85/105 SX 13–17

FACTORY PIPE

Unplated SXS Works Version.

CLOSED COURSE / COMPETITION USE ONLY!



463.05.907.100 

65 SX 16–18

FACTORY PIPE

KTM in-house designed exhaust, perfectly matched to your motorcycle.

Benefits:

- Fat torque curve for optimal rideability
- Made of robust steel
- Nickel-plated, stainless, polished surface
- Recommended in combination with a factory silencer for a perfectly tuned and performance optimized system

CLOSED COURSE / COMPETITION USE ONLY!



SXS.13.085.500 

85/105 SX 13–17

FACTORY PIPE

- Made from high quality, extra strong and durable sheet steel
- Nickel-plated, stainless, polished surface
- More traction and better control when accelerating
- Includes O-rings
- Recommended in combination with an FMF silencer for a perfectly tuned and performance optimized system

CLOSED COURSE / COMPETITION USE ONLY!



SXS.05.085.390

85 SX 03–17

FACTORY CDI UNIT

Straight from the world of motorsports: High-performance CDI unit for the 85 SX – for use with the factory pipe. The ignition point has been optimized precisely for the factory exhaust system in extensive runs on the test bench and numerous test rides.



SXS.08.085.550 

85/105 SX 03-17

FACTORY SILENCER

- Outer sleeve manufactured from high-grade aluminum
 - Lightweight
 - Simple fitting
 - Easy to install
 - Recommended in combination with an FMF factory pipe for a perfectly tuned and performance optimized system
 - Specially developed for use in motocross
- CLOSED COURSE / COMPETITION USE ONLY!



453.05.979.000 

50 SX 16-18

FACTORY SILENCER

- Outer sleeve manufactured from high-grade aluminum
 - Lightweight
 - Simple fitting
 - Easy to install
 - Recommended in combination with an FMF factory pipe for a perfectly tuned and performance optimized system
 - Specially developed for use in motocross
- CLOSED COURSE / COMPETITION USE ONLY!



SXS.09.050.550 

50 SX 09–15

SXS.08.085.550 

85/105 SX 03–17

FACTORY SILENCER

Replacement decal (U691.0070) also available.
CLOSED COURSE / COMPETITION USE ONLY!

U690.6855 

85/105 SX 03–17

FACTORY SPARK ARRESTOR

U.S. Forest Service compliant spark arrestor.
CLOSED COURSE / COMPETITION USE ONLY!



463.05.979.000 

65 SX 16–18

FACTORY SILENCER

- Provides a performance boost over the entire rpm range
 - Made from high-grade aluminum
 - Lightweight
 - Simple fitting, easy to install
 - Recommended in combination with a factory pipe for a perfectly tuned and performance optimized system
 - Specially developed for use in motocross
- CLOSED COURSE / COMPETITION USE ONLY!



472.05.979.000  **NEW**

85 SX

18

AKRAPOVIČ "SLIP-ON LINE"

- More power and torque
- Manufactured from high-grade titanium, with carbon fiber silencer cap
- Permanently welded attachment points
- Akrapovič logo sticker on silencer
- Specially developed for use in motocross

CLOSED COURSE / COMPETITION USE ONLY!





U691.2010

50 SX 01-18

U695.0997

65 SX 02-18

85 SX 03-12

RENTHAL BAR ORANGE

471.02.901.100/04

85 SX 13-18

ORANGE ANODIZED BAR

The special aluminum alloy used for this handlebar makes it possible to eliminate the cross brace, without any negative impact on the required rigidity and flexibility of the handlebar (86 mm x 779 mm x 48 mm).



777.01.939.010 10 MM
 777.01.939.020 20 MM
 777.01.939.030 30 MM
 85 SX 13-18

HANDLEBAR RISER

These CNC-machined, high-strength aluminum handlebar risers are extremely robust thanks to their special screw fastening (from below) on the triple clamp. Twisting and bending are therefore practically impossible. Use of these handlebar risers is only possible on CNC-machined triple clamps. Available in three different heights.



777.02.944.000
 65 SX 14-18
 85 SX 13-18

CLAMP WITH SLIDE INSERT

The CNC-machined clamp and its plastic insert are designed in such a way that the brake and clutch controls twist in the event of a minor fall, thereby reducing the risk of a lever breaking.



789.01.939.044 32 MM
 789.01.939.144 37 MM
 789.01.939.244 42 MM
 789.01.939.344 47 MM
 789.01.939.444 52 MM
 85 SX 13-18

HANDLEBAR MOUNT

Available in five different heights. Kit includes 2 x handlebar support lower parts and 2 x fastening bolts. Please note, the upper parts and bolts required for clamping the handlebar are taken from the original handlebar support.



SXS.07.125.200
 85 SX 13-18

PHDS - PROGRESSIVE HANDLEBAR DAMPING SYSTEM

The CNC-machined handlebar mounting with cushioning rubber inserts relieves wrist and shoulder joints.

Further benefits of the PHDS:

- Cushioning of heavy hits
- Absorption of vibration from chassis and engine
- Additional handlebar damping in horizontal direction
- Optimum steering precision
- Handlebar height adjustable to 2 positions
- Additional damping elements available in three degrees of hardness (soft, medium, hard) for individual customization

PHDS bar pad (SXS.07.250.800)

Replacement elastomers available: Green (SXS.05.125.203) Soft, Yellow (SXS.05.125.204) Standard, Red (SXS.05.125.205) Hard



DID YOU KNOW THAT ALL KTM CNC PARTS ARE MANUFACTURED FROM THE HIGHEST GRADE OF ALUMINUM AND THEREFORE NOT ONLY LOOK GOOD, BUT ALSO WITHSTAND THE TOUGHEST TREATMENT?

With the anodized aluminum components in the original factory look from the KTM PowerParts range, you can turn your KTM into something very special.

SXS.13.050.034

50 SX MINI 09–18
50 SX 09–18

FACTORY CLUTCH COVER

Replacement plug (SXS.13.050.010)



SXS.14.050.132

50 SX 09–18

FACTORY IGNITION COVER

Replacement Gasket (SXS.14.050.036)



472.30.926.000

NEW

85 SX 18

FACTORY CLUTCH COVER OUTSIDE



SXS.14.085.032

85 SX 03–17

FACTORY IGNITION COVER

Replacement Gasket (SXS.14.085.036)



SXS.13.085.033

85 SX 13–17

CASE GUARD

CNC-machined from high-strength aluminum, the best possible and effective protection for the clutch slave cylinder.



SXS.12.065.044

65 SX 09–18

CASE GUARD

CNC-machined from high-strength aluminum, the best possible and effective protection for the clutch slave cylinder.

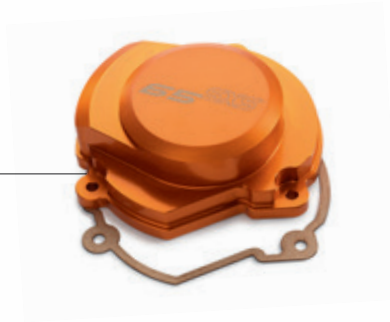


SXS.14.065.032

65 SX 09-18

FACTORY IGNITION COVER

Replacement Gasket (SXS.14.065.036)



794.30.920.044

50/65 SX 09-18

85 SX 08-18

FACTORY OIL PLUG



SXS.16.050.044

50 SX 16-18

CHAIN ADJUSTMENT KIT



720.02.903.000

65 SX 14-18

85 SX 13-18

HYDRAULIC CLUTCH COVER



472.32.975.044

85 SX 18

NEW

CASE GUARD

- Prevents damage to the engine case in the event of the chain breaking
- Helps prevent dirt and mud from packing in between the chain and engine case
- CNC-machined from high-strength aluminum
- Best effective protection for the clutch slave cylinder



700.13.903.000

65 SX 14-18

85 SX 13-18

HAND BRAKE CYLINDER COVER





790.02.924.100

85 SX 18

LOCK-ON GRIP SET

- Grip replacement made easy
- Grips are locked onto the handlebar by a clamp
- Left grip with aluminum clamping ring for fixing onto the handlebar
- Laborious process of gluing and securing grips with safety wire no longer necessary



781.02.924.000

50 SX MINI 12–18
 50 SX 12–18
 65 SX 09–18
 85 SX 03–17

LOCK-ON GRIP SET

- Grip replacement made easy
- Left grip with aluminum clamping ring for fixing onto the handlebar
- Laborious process of gluing and securing grips with safety wire no longer necessary



721.02.979.000/EB

721.02.979.000/28

721.02.979.000/30

65 SX 14–18

85 SX 13–18

HANDGUARD KIT

- Open version
- Manufactured with two-component injection molding technology
- Black mid-section = maximum strength for optimum protection
- Colored top and bottom parts = highly flexible, enduring even the roughest of treatment
- Attached directly at the levers with a special mounting



720.13.902.144/04

| | |
|-------|---------|
| 65 SX | 14 – 18 |
| 85 SX | 14 – 18 |

FLEX BRAKE LEVER

Minimize the possibility of a broken lever with these levers that are designed to fold away upon contact with the ground.

720.02.931.144/04

| | |
|-------|---------|
| 65 SX | 14 – 18 |
| 85 SX | 14 – 18 |

FLEX CLUTCH LEVER

Minimize the possibility of a broken lever with these levers that are designed to fold away upon contact with the ground.



U695.1716

GRIP DONUT SET

Optimum protection against thumb blisters with these coated neoprene rings. Simply slide onto the grips.



781.02.922.000

MUD GRIPS

The mud grips are simply pulled over the existing grips and provide a secure hold on the grip rubber in extremely muddy conditions, thanks to their special material mix.

// MASTER THE RIDE



**WP 65 SX Competition
Shock Absorber**



WP 50 SX Competition Shock Absorber



The high-quality and fully adjustable WP competition shock absorbers for the KTM MINI SX product line up offer the highest performance in these classes. Due to modern, friction optimized components, the shock absorber significantly gains performance and reduces the physical efforts of the young rider.

- Adjustable rebound
- Adjustable high & low-speed compression
- Stepless adjustable spring preload
- All adjustments externally performable with standard tools



WP 65 SX Offroad Competition Front Fork

The WP 65 SX Offroad Competition Fork offers individual adjustability along with well-spaced maintenance intervals.

- Adjustable rebound damping
- Adjustable compression damping
- Stepless adjustable spring preload
- All adjustments externally performable with standard tools

HOW TO ORDER

These parts are available exclusively via the WP Authorized Center network. To find the right article number for your bike or to locate an Authorized Center near you visit www.WPNorthAmerica.com.



WP 85 AER 43 Cone Valve Fork

The AER 43 Cone Valve Fork combines two of WP's greatest technologies: The Cone Valve damping system and the AER spring system:

- Allows for customized setup and improved comfort throughout the stroke
- Unlimited opening up of WP Cone Valve, system means reduced harshness
- Cone Valve system reduces the amount of shims, which limits the possibility of bent shims over time
- AER technology saves up to 2.2 lbs compared to conventional competition forks





WP 85 SX Offroad Competition Front Fork

The WP 85 SX Offroad Competition Front Fork can be individually adjusted for each rider and riding style:

- 43 mm closed cartridge technology
- Improved response due to the use of friction-optimized parts
- Adjustable rebound damping
- Adjustable compression damping
- Individually adjustable spring preload



WP 85 SX TRAX Shock

The high-grade and fully adjustable WP TRAX shock absorber for the KTM 85 SX has been developed on the basis of extensive experience and test results gained in international racing series. They provide complete setting options for simple optimization of the bike to the requirements of junior riders.

- More traction and grip from the rear wheel allows for better acceleration
- The motorcycle rides higher over a series of bumps (no "packing down")
- Greater safety and more comfort when riding
- Adjustable rebound damping
- Adjustable high and low speed compression damping
- Continuously adjustable spring preload

HOW TO ORDER

These parts are available exclusively via the WP Authorized Center network. To find the right article number for your bike or to locate an Authorized Center near you visit www.WPNorthAmerica.com.



472.03.094.000/33 **NEW**

85 SX 18

FRAME PROTECTION SET



781.07.908.144

65 SX 10-18

FACTORY FUEL TANK CAP



777.07.908.244

85 SX 13-18

FACTORY FUEL TANK CAP



472.03.994.000/EB **NEW**

85 SX 18

453.03.994.000/EB

50 SX 16-18

463.03.994.000/EB

65 SX 16-18

471.03.994.000/04

85 SX 13-17

FRAME DECALS

For protecting your frame without altering the slender profile of your bike.

U695.1010

FACTORY FUEL TANK CAP VENT



471.35.924.044/04

85 SX 13-17

ORANGE RADIATOR HOSE

472.07.940.000 **NEW**

85 SX 18

471.07.940.000

85 SX 13-17

HIGH SEAT

Grow a little with the bike. For the somewhat taller racers of the future. Approx. 20 mm higher than the standard seat.

472.07.940.200 **NEW**

85 SX 18

471.07.940.100

85 SX 13-17

LOW SEAT

Just made the switch and not big enough for the bike yet? The low seat provides shorter riders with optimum control of the motorcycle. Approx. 15 mm lower than the standard seat.

472.07.940.400 **NEW**

85 SX 18

471.07.940.200

85 SX 13-17

STEP SEAT

The factory rider seat, thanks to the special step, there's no slipping backwards when you open up the throttle. Standard height.



472.06.004.000/28 ☐ **NEW**

85 SX 18

SIDE PANEL RIGHT

472.08.007.000/28 ☐ **NEW**

85 SX 18

FRONT NUMBER PLATE

472.06.003.000/28 ☐ **NEW**

85 SX 18

AIR BOX COVER

472.06.005.000/28 ☐ **NEW**

85 SX 18

SIDE PANEL LEFT

472.08.010.000/EB ☐ **NEW**

85 SX 18

472.08.010.000/28 ☐ **NEW**

85 SX 18

FRONT FENDER

472.08.013.000/EB ☐ **NEW**

85 SX 18

REAR FENDER

472.08.054.000/EB ☐ **NEW**

85 SX 18

SHROUD SET

472.01.094.000/28 ☐ **NEW**

85 SX 18

FORK PROTECTION SET





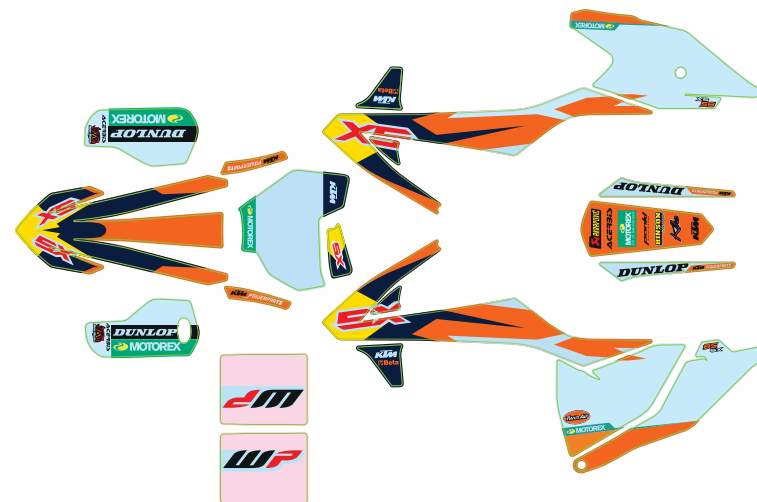


463.08.990.000

65 SX

16-18

FACTORY GRAPHICS KIT

472.08.990.000 **NEW**

85 SX

18

FACTORY GRAPHICS KIT



453.08.990.000

50 SX

16-18

FACTORY GRAPHICS KIT



UPP.15.08.021

50 SX

09-15

UPP.15.08.022

65 SX

09-15

UPP.15.08.023

85 SX

13-17

KURT CASELLI FOUNDATION GRAPHICS

Ride like Caselli with these special edition Kurt Caselli Foundation graphics.

A portion of all proceeds will be donated to the Kurt Caselli Foundation.





470.09.060.200

85 SX 13-18

WAVE BRAKE DISC

- Diameter 260 mm
- Floating brake disc manufactured from special high-grade stainless steel
- Wave design for added braking performance
- Minimal brake pad wear
- The front brake caliper mounting kit (720.09.960.044) is also required for mounting



700.10.160.000

85 SX 13-18

OVERSIZED REAR WAVE BRAKE DISC

- Diameter 230 mm
- Manufactured from special high-grade stainless steel
- Wave design for added braking performance
- Minimal brake pad wear
- The rear brake caliper mounting kit (720.10.960.044) is also required for mounting



725.13.975.000/30

85 SX 13-18

BRAKE CALIPER SUPPORT

Lighter and stiffer than the standard brake caliper support. The stiffness has a positive effect on braking power. CNC-machined from the highest grade of aluminum and anodized black. Options available: Carbon brake disc protection (777.13.975.030).



720.10.961.000

85 SX 13-18

REAR BRAKE DISC GUARD

Protects the rear brake disc from roost and other solid objects. Made of high-strength aluminum.

452.13.930.000

50 SX

02-17

BRAKE PADS

Fully sintered pads for maximum braking performance.



472.09.961.000

85 SX

18

NEW

720.09.961.000

85 SX

13-17



FRONT BRAKE DISC GUARD

Very practical: The intelligent fitting system with a central adapter replaces the spacer sleeve on the wheel axle and allows the tire to be changed, brake to be serviced, etc., without removing the brake cover.

777.13.975.030

BRAKE DISC PROTECTOR

Protects the rear brake disc from roost and other solid objects while maintaining minimal weight. Designed to fit on CNC brake caliper support (725.13.975.000 / 30).



U691.3125 T38
50 SX 04-13

RENTHAL SPROCKET

U691.3128 T38
50 SX 14-18

RENTHAL SPROCKET

U695.1251 T46

U691.1024 T47

U695.1252 T48

U695.1253 T49
65 SX

RENTHAL SPROCKET

U695.1254 T44

U695.1255 T45

U695.1256 T46

U695.1257 T47

U695.1258 T48
85 SX

RENTHAL SPROCKET

Made exclusively for KTM by Renthal, these orange anodized rear sprockets are used by the KTM Factory Race teams. Lightweight, durable and provide great performance.



472.10.951.048/04 T48 **NEW**
85 SX -18

472.10.951.049/04 T49 **NEW**
85 SX -18

472.10.951.050/04 T50 **NEW**
85 SX -18



ORANGE REAR SPROCKET

- Manufactured from high-strength 7075-T6 aluminum, the strongest aluminum in the world
- Chain runs accuracy of 0.002 mm
- Orange anodized with a permanent, organic and environmentally friendly pigment

461.10.051.150/04 T50
65 SX

470.10.051.148/04 T48
85 SX -18

470.10.051.149/04 T49
85 SX -18

470.10.051.150/04 T50
85 SX -18



ORANGE 2K REAR SPROCKET

If you're looking for the ultimate in quality and performance, this sprocket is the one for you!

- High-strength steel teeth, give a long service life
- Aluminum inner ring, to reduce unsprung weight
- Joined together permanently with high-strength rivets
- At least three times longer service life than other aluminum rear sprockets
- 50% lighter than a conventional steel rear sprocket

2K sprockets are exclusively produced for KTM by Supersprox. This product is protected under the following patents in Europe and USA. EU patent # EP1573234. US Patent # 7.481.729. Patent owner Supersprox, a.s.

THIS GENERATION OF KTM ALUMINUM SKID PLATES PROVIDE THE MOST EFFECTIVE PROTECTION FOR BOTH FRAME AND ENGINE:

- Made from 4 mm-thick, high-strength, robust aluminum
- Extremely durable and endurance tested for the toughest offroad use
- Custom design – specially developed for KTM models
- Highest quality of workmanship
- Quick and simple installation

462.03.990.000

65 SX 09–18

SKID PLATE



471.03.990.000

85 SX 13–17

SKID PLATE



472.03.990.000

85 SX 18

SKID PLATE

NEW



790.06.922.000

85 SX

18

SAND COVER FOR AIR FILTER

Recommended for use on sandy tracks. Suggested installation together with oiled air filter and dry dust guard (590.06.019.000, 772.06.920.100, 790.06.920.000 or 472.06.920.000).



472.06.920.000 **NEW**

85 SX

18

DUST COVER FOR AIR FILTER

This large-pored air filter cover acts as an additional protective layer, hence extending the time between filter service intervals. Recommended in extremely dusty conditions.



510.12.093.000

TIRE IRON LONG

Practical tire iron – long version for minimum effort.



510.12.092.000

TIRE IRON SMALL

Practical tire iron – short version ideal for portable tool bags.



781.29.984.000

TIRE IRON SET

Made from high-strength, orange-anodized aluminum; not suitable for fitting tires with mousse tubes. With integrated ring spanners 32, 27, 17, 13 and 10 mm.



000.29.901.000

BEAD BUDDY

The Bead Buddy acts as your third hand when fitting tires. Holds the tire in the tire bead, thereby making tire fitting much easier. Device simply hooks over the spoke and pushes the tire bead down on the opposite side of the tire from the tire irons. Highly recommended for tire fitting with mousse tubes.



780.29.962.000/30

MAGNETIC BOLT PAN

Never loose a bolt again! Perfect for use in combination with SX stand (780.29.155.000).



000.29.098.200

SCREW DRIVER SET

High quality, 5-piece screwdriver set in the traditional KTM design.





U695.1126

SPOKE TORQUE WRENCH

On this spoke wrench, the torque is preset to 5.4 NM. This prevents over-tightening of the spoke nipples. Too much torque when tightening spoke nipples is the most frequent cause of broken spokes. Wrench size 6.8 mm.



000.29.015.000

WIRE PLIERS

Recommended, very practical, high quality tool to help you twist safety wire (548.12.016.000) like a professional.



548.12.016.000

SAFETY WIRE

200 m of wire with a 0.61 mm diameter.

772.12.991.100

SPOKE WRENCH

6 mm and 7 mm.



000.29.020.000

50/65 SX

SPOKE WRENCH

5 mm and 5.6 mm.



579.29.020.000

SX/EXC

CHAIN BREAKER

5/8" x 1/4".



UPP15.29.020

520 CHAIN

KTM MASTERLINK TOOL

Conveniently remove/install chain masterlink, without damaging the clip.

U695.1130

ORANGE CABLE TIES

100 pieces, length: 20 cm.





000.29.098.300

TOOLBOX

38-piece, 1/4" tool box in orange with high-quality, chrome-vanadium tools. Ratchet (with locking device), lever, two extensions and socket wrench. Hexagon sockets from 4 to 14 mm; Allen keys from 3 to 8 mm; Phillips, slotted and Torx bits. With this toolbox, small jobs on your KTM motorcycle can be completed quickly and reliably. Whether you're removing plastics or changing the oil, you'll definitely find the right tool here.



000.29.999.100

| | |
|--------------------|-------|
| 125/150 SX | 07-18 |
| 250/300 SX/XC/XC-W | 07-18 |
| SX-F/XC-F | 07-18 |
| XCF-W/EXC-F | 08-18 |

BOLT KIT

Contains all the most-used bolts and small parts for a wide range of KTM motorcycle models. A 30% savings compared to purchasing these parts individually.



000.29.098.400

TOOLBOX

60-piece, 3/8" tool box in orange with high-quality, chrome-vanadium tools. Ratchet (with locking device), lever, two extensions and socket wrench. Hexagon sockets from 6 to 24 mm; Allen keys from 3 to 10 mm; Phillips, slotted and Torx bits from 15 to 55 mm. With this toolbox, small jobs on your KTM motorcycle can be completed quickly and reliably. Whether you're removing plastics or changing the oil, you'll definitely find the right tool here.



000.29.996.000

TORQUE WRENCH SET

High-quality, adjustable torque wrench 2-25 NM, includes the following accessories:

- Push-on spoke wrenches in sizes 5.65 and 6.95 mm
- Push-on 1/4" ratchet
- Ratchet attachments: 8, 10, 13 mm socket wrench and 15 mm Torx bit





000.29.090.100

SAG SCALE

Makes setting the sag significantly easier.
Folding version for stowing away in tool box.



000.29.990.010

SX 13-18

SAG SCALE PIN

Extra pin for using the sag scale with larger axle diameters.



590.29.041.000

0.10; 0.12; 0.15; 0.20; 0.25

590.29.041.100

0.05; 0.10; 0.15; 0.20; 0.25; 0.30; 0.35

FEELER GAUGES

U691.0021

SX/XC/XC-W 04-16

POWER VALVE ADJUSTMENT TOOL

The perfect tool to easily adjust your power valve properly.



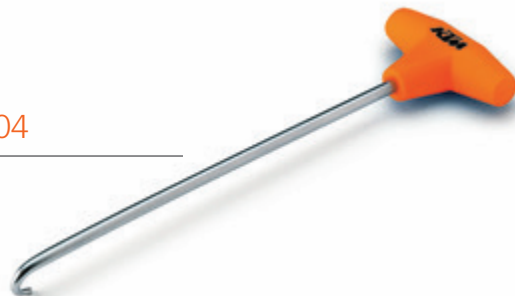
583.12.078.000

TOOL BAG

503.05.017.000/04

SPRING HOOK

Simple spring removal.



583.10.025.000

AXLE GAUGE

The ideal tool for checking perfect wheel position when adjusting the chain.



SXS.08.250.035

ALL FOUR-STROKE KEIHIN CARBURETORS

JET NEEDLE REMOVAL TOOL

Allows for simple replacement of the carburetor needle.



000.29.997.000

MULTI TOOL

The perfect tool for when on the go! Conveniently packaged in a small bag you can use the multi tool with the following fittings: 14, 12, 10, 8 mm hexagon sockets; 6, 8, 13 mm socket wrench; inserts for slotted and Phillips screw heads, 5 mm / 6 mm Allen keys, 25 / 30 and 40 / 45 Torx; bottle opener; and 3 / 8" and 1 / 4" socket drives.



794.12.966.000

DIGITAL PUMP FOR AIR FORK

The perfect tool for tuning your air fork. With this high quality pump, extensively tested by KTM, you can set your air fork effectively and perfectly to your needs and the current track conditions, in a matter of seconds. The one tool that ensures you are READY TO RACE.





773.29.068.000

DIGITAL TIRE GAUGE

Comfortable and easy to use. Fits all standard valves. Pressure display in bar or psi. Integrated pressure release valve for accurate pressure adjustments. Switchable display and work area lighting. Energy-saving function with automatic cut-off. Maximum measuring pressure: 60 psi.



U695.1099

TIRE GAUGE

Easy to use! Measuring range 0 – 60 psi. Clamping head rotatable 360° on a flexible stainless steel feed line. The valve shaft is therefore accessed easily and quickly. Very accurate measurements by way of a durable internal membrane. Internal pressure is reduced after use by a relief valve (push button).



773.12.030.000

FOOT AIR PUMP

Small, lightweight and very portable – saves the day in the event of a puncture on the move! Mini-foot pump with pressure gauge on the swiveling valve head that fits all prevalent valves. Integrated double-cylinder with pressure switch-over to high pressure. Maximum 12 bar/160 psi. Height: approx. 170 mm when folded together.



584.29.074.100

BATTERY CHARGING AND TESTING UNIT

A must for every workshop/garage. Testing, charging and keeping batteries charged made easy. Fully automatic and economical battery charging by means of programmed charge characteristic. Clear LC display shows charging level. Reverse polarity protection, short-circuit protection and overload protection.

CAUTION: The battery charging and testing unit must not be connected to lithium-ion batteries for longer than 24 hours, lithium-ion batteries are also not suitable for trickle charging.

000.29.016.000 CLOSED CARTRIDGE
SX 07-18

MULTI-PURPOSE TOOL

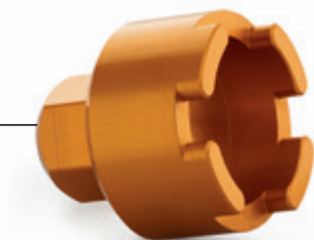
Recommended tool for removing the screw caps.
Fits all closed cartridge forks.



U690.9807 CLOSED CARTRIDGE
SX/XC 07-16

SCREW CAP REMOVAL TOOL

Recommended tool for removing the fork caps.
Fits all closed cartridge forks.



U691.0066
125/150 SX 11-15
250 SX 11-16
SX-F 11-15
SUPERMOTO 12-14
EXC 12-16

SHOCK SPRING PRELOAD ADJUSTER

Practical tool for setting preload on the shock absorber
without having to remove it.



796.19.910.000 **NEW**

125/150 SX 16-18
250/300 SX/XC/XC-W 17-18
SX-F/XC-F 16-18
EXC 17-18

SPANNER WRENCH

Practical tool for setting preload on the shock absorber
without having to remove it.



U695.1017 ALL OPEN CARTRIDGE 48 MM FORKS

FORK REMOVAL TOOL





772.11.942.144

SX/XC 15–18
XC-W/EXC 16–18

POWER SOCKET

The simplest way to always keep a battery freshly charged. Once the plug is fitted to the bike, nothing stands in the way of a rapid connection to the battery charger (584.29.074.000). Includes charging cable (601.29.074.050).

790.12.030.100/04

EXHAUST PLUG

Keeps water out of the silencer during cleaning.
For internal diameters 15 mm–38 mm.



452.06.998.000/04

50 SX MINI 09–18
50 SX 09–18

463.06.998.000/04

65 SX 98–18

790.06.998.100/04

125/150 SX/XC-W 16–18
250/300 SX/XC/XC-W 17–18
SX-F/XC-F 16–18
EXC-F 17–18

AIR FILTER BOX COVER

Highly recommended! Protects the intake tract from water and dirt when cleaning the air filter box.



590.06.098.000

SX 85/105 03–12
SX 98–06
EXC 98–07

590.06.098.100

SX 07–10
EXC 08–11

772.06.998.000/04

85 SX 13–17
125/150 SX 11–15
250/300 SX/XC/XC-W 11–16
SX-F/XC-F 11–15



AIR FILTER BOX COVER

Highly recommended! Protects the intake tract from water and dirt when cleaning the air filter box.

790.12.030.000/04

EXHAUST PLUG

Keeps water out of the silencer during cleaning.
For internal diameters 37 mm–62 mm.



595.12.030.200

EXHAUST PLUG

Keeps water out of the silencer during cleaning.
For internal diameters 37–62 mm.



KTM Motorex co-branded products are the direct result of a decade-long racing and development partnership between KTM and Motorex. The research and development over the years results in the absolute best oil available for your KTM motorcycle.

KTM Motorex oils are formulated from the highest-quality synthetic PAO and Ester base stocks and are JASO MA certified. JASO MA oils are required for use in four-stroke KTM motorcycles that use a single oiling system for the engine, transmission and wet clutch system. KTM Motorex guarantees MA performance in its JASO MA-rated lubricants

U691.3020

1 L/12

U691.3021

4 L/4

MOTOREX AIR FILTER CLEANER



U691.3022

1 L/12

U691.3023

4 L/4

U691.3024

DRUM

MOTOREX CROSS POWER 4T 10W/50



U691.3025

1 L/12

MOTOREX CROSS POWER 4T 10W/60

U691.3031

250 ML

MOTOREX BRAKE FLUID 5.1



U691.3026

1 L/12

MOTOREX CROSS POWER 2T PREMIX



U691.3030

1 L/12

MOTOREX AIR FILTER OIL



U691.3028

MOTOREX OFFROAD CHAIN LUBE 500 ML



U691.3036

1 L/6

MOTOREX MOTO CLEAN



U691.3035

1 L/12

MOTOREX COOLANT 3.0



U691.3032

1 L/12

U691.3033

4 L/4

MOTOREX POWER SYNT 4T 10W/50



U691.3027

1 L/12

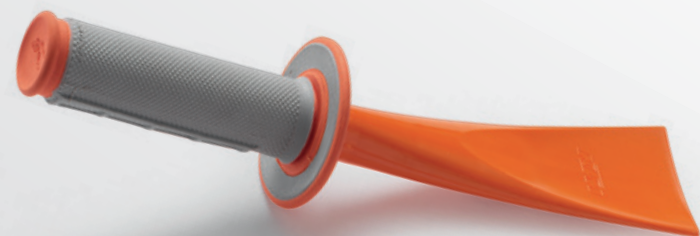
MOTOREX TOP SPEED 15W/50



781.29.994.000

FORK SEAL DOCTOR

This clever tool is a must for every motorcycle toolbox. With it, you can remove dirt from your fork seals effortlessly. No matter whether it's in the garage or at the track. This tool extends the life of your seals many times over. For all 48 mm forks.



548.29.035.000

MUD REMOVAL TOOL

Use this to remove the dirt from your last mud battle with ease! A motorcycle grip rubber (not included) can be fitted to the grip.

780.29.065.000/04

OIL FLASK

Perfect for all two-stroke riders on the go. The small bottle fits right in your tool bag or jacket. Capacity 250 ml, with scaling for different mixture ratios (1:40/2.5%; 1:50/2%; 1:60/1.7%; 1:80/1.25%).



780.29.063.000

MEASURING CUP 1,000 ML

1 liter volume with scaling for both the fluid level and different mixture ratios. Perfect for changing the oil and for preparing larger quantities of two-stroke fuel. Simple handling thanks to the ergonomic design.





750.29.964.000/04

INJECTOR BOX

Offers secure and clean storage for a spare injector to have with you in case an injector gets contaminated during your ride. Provides space for one injector, as well as the associated seals.

812.12.016.100

| | |
|-----------------------|---------|
| 250/350 SX-F/XC-F | 11 – 18 |
| 450 SX-F/XC-F | 13 – 18 |
| 250/350/450/500 EXC-F | 12 – 18 |



WASH CAP FOR FUEL HOSE

A must when washing the motorcycle with the fuel tank removed. Prevents water from entering the fuel line.



780.29.064.000/04

SPARK PLUG HOLDER

With space for storing fuses.



781.29.955.100

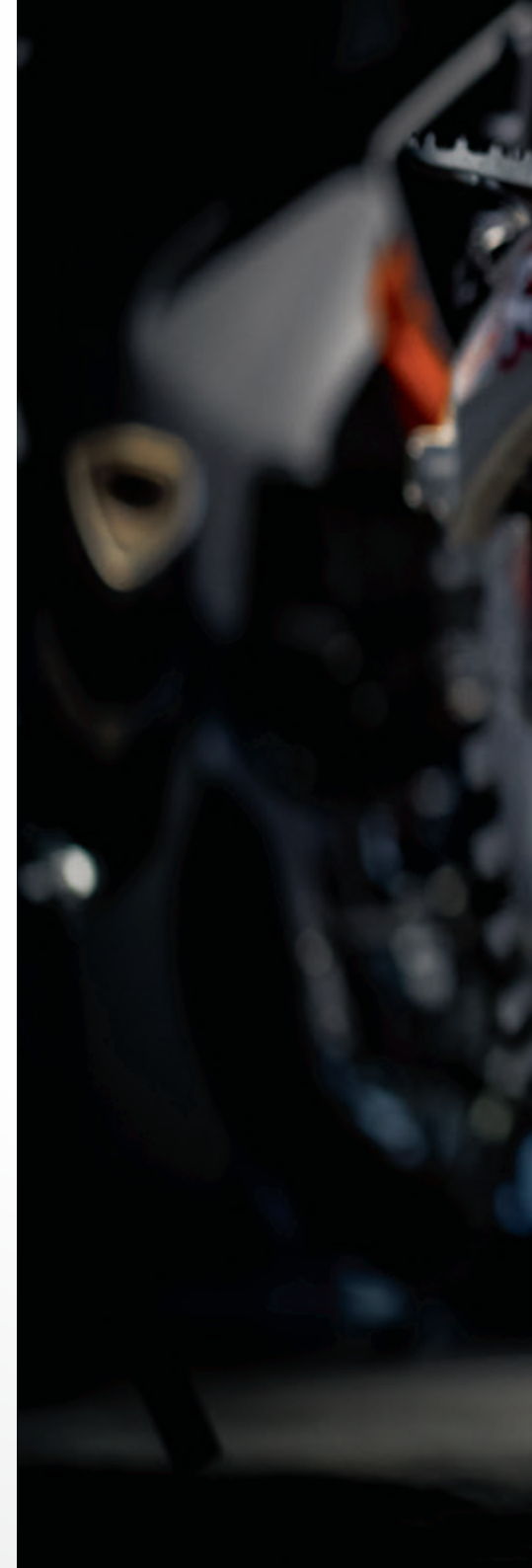
SX/XC/XC-W/EXC/FREERIDE

789.29.955.100

SUPERMOTO

LIFT STAND

Available in two different heights
SX/EXC: 315 mm/425 mm
Supermoto: 260 mm/370 mm
Maximum weight capacity: 330 lbs





451.03.023.300

50 SX

470.03.020.000

65 SX 03-18

85 SX 03-18

105 SX 04-11

777.03.020.000

SX/XC/XC-W/EXC 03-18

PLUG-IN STAND



780.29.155.000

BIKE STAND

High quality plastic stand designed especially for KTM offroad bikes.

Special features:

- Two different heights possible
- Can be used as a stand for the quickfill system
- Storage space for the front and rear axle when removing the wheels
- Attachments included for the following parts: mud removal tool, exhaust plug, magnetic bolt pan and other various tools



780.29.155.100

BIKE STAND KIT

High quality plastic stand designed especially for KTM offroad bikes. Complete with mud removal tool, exhaust plug, screw driver set and magnetic bolt pan.

780.03.923.050

XC/XC-W/EXC/FREERIDE 07-18

KICK STAND PLATE LARGE

Specifically for soft ground, such as sand.
Size: 75 x 50 mm.



UPP.15.29.010

MATRIX A2 STAND

UPP.15.29.011

50/65/85

MATRIX A2 MINI STAND

Mini stand made especially for 50 / 65 / 85 SX models! Aluminum construction with a non-slip pad. The top is wedge shaped and solid so the bike doesn't slide around while washing. Powder-coated orange.



U695.1277

FOLDING BIKE RAMP

High quality, folding aluminum ramp with straps for secure attachment on loading. Weighing only 12 lbs, it withstands a load of 400 lbs. The total length is approx. 6'6", folded approx. 3'3".



781.12.973.000



781.12.973.000/99



PLASTIC DRUM

5 gallon, KTM plastic drum for use on the racetrack. Complete with flexible hose and screw cap. Not to be used for storage and transportation of gasoline.

Replacement parts available:

Hose (U690.8899)

Cap (U691.0033)

Vent cap (U691.0034)

Decal (781.12.973.001)

590.29.050.000

FUNNEL

Funnel specially developed for KTM motorcycles.

Diameter (small and large) optimized to suit the filler neck; special groove for optimum ventilation.



TOOLS + TRANSPORTATION

TRANSPORTATION



780.12.006.000

PIT MAT

Now required at many racing events. The special material mix prevents spilt fuel from seeping into the ground. The mat also helps in finding fallen tools, bolts and other small loose parts when servicing outdoors. The special KTM design brings the total factory look to your pit. Size: 5' X 3'3"

790.29.930.000

PIT BOARD

To display the most important information to your rider during racing and practice. Marker included.





790.12.906.100

PIT MAT

Features:

- Made from polyester, with special rubberized backing
- Gas and oil resistant
- READY TO RACE design
- Size: 3'3" x 5'6"



U691.0046

SOFT TIE DOWNS WITH HOOKS

Our KTM tie-downs feature built-in soft tie loops that allow these tie-down straps to have soft ties built in, so you don't scratch your bars. KTM orange/black with distinctive KTM PowerParts logos.



U691.0047

SOFT TIE DOWNS WITH CLIPS

Our KTM tie-downs feature built-in soft tie loops that allow you to secure your KTM without scratching your handlebars. These extra wide webbing units feature a clip hook on one end, plus high-quality friction lock fasteners. KTM orange/black with distinctive KTM PowerParts logos.



U691.0048

SOFT TIE DOWNS WITH RATCHET

These tie downs offer the convenience of a soft tie with the additional benefit of a ratchet. Extra wide hooks allow you to secure your bike easily. Great for hauling heavier motorcycles. KTM orange/black with distinctive KTM PowerParts logos.



U691.0049

SOFT TIES

These tough KTM soft ties allow you to strap down your bike without scratching your handlebars or tank. Built from a durable ballistic nylon, they have a 615 lbs. weight capacity. Black with distinctive KTM PowerParts logos. Dimensions: 1.5" x 24".



548.12.004.000

FACTORY TRANSPORT COVER

For rear sprockets up to 50T and 220-260 mm brake discs.



610.12.016.000

BRAKE LOCK

Prevent front wheel movement when bike is parked, or use to aid in lifting a bike onto the stand.



548.29.094.100

FORK SUPPORT



SXS.05.125.600

CLEAN GRIP SET

Keeps your grips clean between motos to ensure you are always READY TO RACE!

613.12.007.000

PROTECTIVE OUTDOOR COVER "BEAST"

The KTM outdoor bike cover provides year round protection for your motorcycle. Cover is made from an exclusive, pigmented fabric. Carrier bag included.



600.12.016.000

HIGH SECURITY U-LOCK

High quality U-lock made from hardened steel with a double locking mechanism. Locking cylinder with optimum protection against any attempts at manipulation. 250,000 key versions. 2 keys supplied as standard. Includes rotating PVC cover that protects the cylinder lock from dirt. High quality corrosion protection.



625.12.007.000

PROTECTIVE COVER INDOOR

No chance for dust, scratches, etc. The indoor bike cover turns every KTM into a real eye-catcher in the garage. The fabric consists of a special material with a distinctive structure that is completely impermeable to dust and dirt. The inner side has a soft lining.

590.12.007.000

PROTECTIVE COVER OUTDOOR

The KTM outdoor bike cover provides year round protection for your motorcycle. The cover is made from an exclusive, pigmented fabric. Carrier bag included.

Every authorized KTM dealer will be pleased to advise you on the exact scope of supply of the KTM PowerParts, any necessary mounting parts, as well as appropriate part variants for your particular KTM motorcycle. Professional advice and proper installation of the KTM PowerParts by an authorized KTM dealer using KTM special tools are essential to provide maximum safety and functionality.

LEGAL DISCLAIMER

KTM Sportmotorcycle GmbH reserves the right, without prior notice and without specifying reasons, to amend technical specifications, fittings, scope of supply, colors, materials, services offered and provided, etc., or to discontinue them without replacement, or to stop manufacturing a particular product.

All information concerning the scope of supply, appearance, services, dimensions, and weights is non-binding and specified with the condition that mistakes, printing, setting, and typing errors may occur; such information is subject to change without notice.

All of the items in this catalog have been designed/developed especially for the needs and demands of offroad motorsport. The items in this catalog have been developed and are intended for closed course competition use and racing applications only. Any other usage violates U.S. Federal and/or state law and could be subject to fines. Only items explicitly designated to be "50 State Legal" have been developed and are approved to meet U.S. Federal and California emission requirements for highway/on-road use.

DO NOT attempt to imitate the illustrated riding scene. The riders illustrated are professional motorcycle riders. The photos were taken on closed racing circuits or closed roads. KTM wishes to make all motorcyclists aware that they need to wear the prescribed protective clothing and always ride in a responsible manner in accordance with the relevant and applicable provisions of the road traffic regulations. Only homologated versions of motorcycles promoted in this catalog are suitable for on road use. Some products in the KTM PowerParts range are not approved for use on public roads in certain circumstances (varies from country to country). Please note that model specifications may vary from country to country. The statutory warranty of the respective country applies.



Art.Nr.: 20180040NA



* 2 0 1 8 0 0 4 0 N A *

© KTM NORTH AMERICA, INC. 2017



KTM NORTH AMERICA INC.

1119 Milan Ave, Amherst, OH 44001
38429 Innovation Court, Murrieta, CA 92563
8701 Rue Samuel-Hatt, Chambly, QC J3L-6V4
www.ktm.com



KTM POWERPARTS **KTM ORIGINAL SPARE PARTS**
KTM POWERWEAR **KTM RIDE ORANGE**

