

KTM POWERPARTS

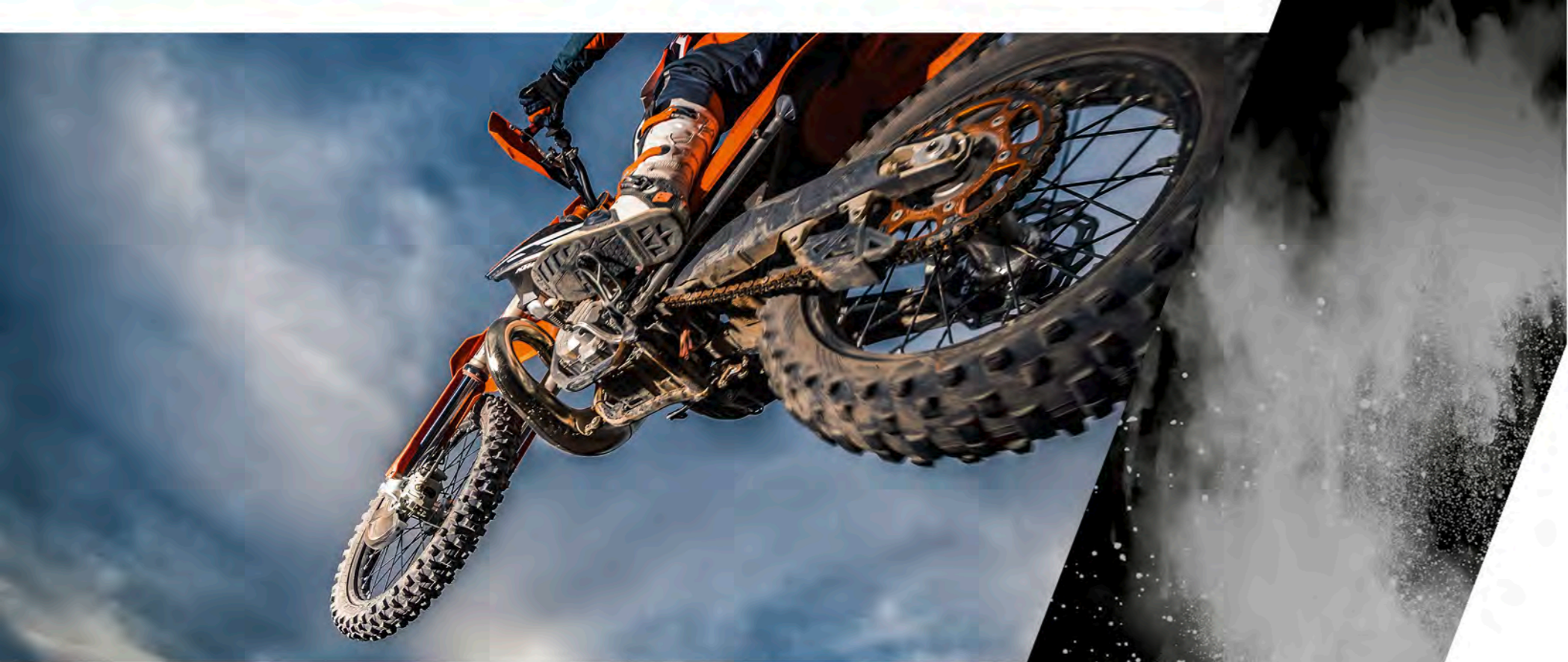
OFFROAD 2017

KTM POWERPARTS

READY TO RACE
www.ktm.com

KTM





KTM POWERPARTS

1	SXS PARTS	004	12	CHAINS + SPROCKETS	092
	TRIPLE CLAMPS	006		SPROCKETS	092
	SUSPENSION	009		CHAINS	093
	ENGINE TWO-STROKE	010		SPECIAL PARTS	094
	SPECIAL PARTS	016	13	BRAKES	096
2	ENGINE	018		BRAKE CYLINDER	096
3	EXHAUST	020		BRAKE CALIPER	097
	TWO-STROKE	020		BRAKE DISCS	098
	FOUR-STROKE	026		BRAKE PADS	100
	HEAT PROTECTION	032		SERVICE	102
4	HANDLEBAR + INSTRUMENTS/ELECTRIC	034		SPECIAL PARTS	103
	GRIPS	034	14	COOLING	104
	LEVER	038		FANS	104
	HANDGUARDS	042		FANS + HOSES	106
	HANDLEBAR	046		PROTECTION	108
	HANDLEBAR SUPPORT	048	15	PROTECTION	110
	STEERING DAMPER	050		ENGINE PROTECTION TWO-STROKE	110
	INSTRUMENTS/ELECTRIC	052		ENGINE PROTECTION TWO + FOUR-STROKE	114
	SPECIAL PARTS	054		ENGINE PROTECTION FOUR-STROKE	116
5	CNC PARTS ANODIZED	058		CHASSIS	123
	ENGINE	058	16	AIRFILTER	127
	CHASSIS	060	17	NAVIGATION + LUGGAGE	128
6	PLASTIC PARTS + DECALS	062	18	FREERIDE	130
	PLASTIC PARTS	062	19	50 / 65 / 85 SX	148
	DECALS	064	20	TOOLS + TRANSPORTATION	176
7	SEATS	072		TOOLS	176
8	FOOTPEGS	078		STANDS	186
9	TANKS	080		TRANSPORTATION	188
10	SUSPENSION	082		WP / RIDE HARDER	84 – 85
11	WHEELS	086			164 – 166
	OFFROAD	086			
	SUPERMOTO	088			
	SPECIAL PARTS	090			

50 **50**
50-State Legal

MAP **MAP**

There is a specially developed engine software (mapping) for products marked with the MAP symbol. This mapping has been designed by our engine development department for optimum performance as well as durability of the components, and can only be uploaded by your authorized KTM dealer.

DISCLAIMER

THE ITEMS IN THIS CATALOG HAVE BEEN DEVELOPED AND ARE INTENDED FOR CLOSED COURSE COMPETITION USE AND RACING APPLICATIONS ONLY. ANY OTHER USAGE VIOLATES U.S. FEDERAL AND OR STATE LAW AND COULD BE SUBJECT TO FINES. ONLY ITEMS EXPLICITLY DESIGNATED TO BE "50 STATE LEGAL" HAVE BEEN DEVELOPED AND ARE APPROVED TO MEET U.S. FEDERAL AND CALIFORNIA EMISSION REQUIREMENTS FOR HIGHWAY/ON-ROAD USE.

USED BY OUR **KTM**
FACTORY TEAM

When you see this symbol, you can be rest assured knowing that you've made the best choice, because our Factory Team relies on this KTM PowerParts product.

KTM SXS

If the performance of our offroad world champions is what you want, then there's only one choice for you and your race machine: KTM SXS parts. The ultimate, premium quality KTM PowerParts. Top-performance parts not off the peg, but developed by specialists in collaboration with the KTM Motorsport department – the makers of world champions. Tried and tested by KTM Factory riders in countless world championship races. With the KTM SXS parts, your bike at equipped technically for the highest level of racing, and capable of Factory performance on any racetrack.





SXS.16.450.460 22 MM OFFSET
SX/XC 13-17

SFS TRIPLE CLAMP

The integrated SFS "Smooth feeling system" on the handlebar support for the triple clamp is an additional damping system that dampens shocks and vibrations. As a result of the SFS system, you also get a very direct feel for the front wheel and a much more precise steering response. The stiffness of the damper can be adjusted by means of a standard pump for Schrader valves. The triple clamp is made of high quality, CNC machined aluminum and anodized orange.





DO YOU KNOW ABOUT THE BENEFITS OF A CNC-MACHINED TRIPLE CLAMP?

All **KTM CNC-machined triple clamps** have the following properties:

- Manufactured from highest grade aluminum
- Optimally tuned steering stem stiffness
- 100% alignment of the fork tubes
- Perfect flexibility – adapted precisely to the KTM WP fork

The **factory triple clamp** has the additional benefits of:

- Fork clamping spindled after anodizing: With the same tightening torque, this operation increases the friction between triple clamp and fork tubes, thus nearly eliminating the fork tubes from twisting in the triple clamp
- The special steering stem bracket provides additional support for this feature
- Ultra-easy offset adjustment: dismantling of front wheel and fork is not necessary!

The triple clamp offset is the distance between the horizontal center line of both fork tubes and the center of the steering axis, by which the fork tubes are offset from the steering axis (referred to as dimension "X"). The selected offset can be seen at a glance thanks to the marking on the triple clamp.

Offset setting options:

- Shorter offset: stability on fast straights
- Longer offset: faster and tighter- steering into corners

All KTM triple clamps are supplied with steering stem and with the steering head bearing already pressed on.



SXS.10.450.460

SX/XC 03-12
XC-W/EXC 03-13

FACTORY TRIPLE CLAMP

With adjustable offset 19 or 22 mm.

ATTENTION: Only the 22 mm offset may be used on the 450 SX-F 2010 model, otherwise there is a risk of the front wheel hitting the exhaust manifold when the fork is compressed.

772.01.999.122/04

SX/XC 03-12
XC-W/EXC 03-13

22 MM OFFSET

777.01.999.022/30

SX/XC 13-17
XC-W/EXC 14-17

22 MM OFFSET

781.01.999.022/04

SX/XC 13-17
XC-W/EXC 14-17

22 MM OFFSET

NEW!

781.01.999.020/04

SX/XC 13-17
XC-W/EXC 14-17

20 MM OFFSET

TRIPLE CLAMP

During installation on 2016 SX/XC models, handlebar support 789.01.939.044/144/244/344/444 or the PHDS SXS.07.125.200 is also required.



SXS.13.450.460

SX/XC 13-17
XC-W/EXC 14-17

FACTORY TRIPLE CLAMP

With adjustable offset of 20 or 22 mm. During installation on SX/XC/SX-F/XC-F models from 2016 the handlebar support 789.01.939.044/144/244/344/444 or the PHDS SXS.07.125.200 is additionally required.



780.01.993.000

SX/XC/XC-W 08-14
W/ FORK REINFORCEMENT

790.01.996.000

SX/XC/XC-W 15-17

FACTORY START

The factory start is mounted directly on the fork. Before the start, the fork is compressed and secured in the desired position to shift the center of gravity forward. This helps prevent the front wheel from lifting at the start, thus providing greater traction and perhaps securing you the holeshot. The first time the fork dips, it releases automatically.

SXS.14.450.300

125/150 SX 12-15
250 SX 12-16
SX-F/XC-F 11-15

SXS SHOCK ABSORBER LINKAGE

The SXS shock absorber linkage is the result of very successful teamwork between KTM factory riders and the specialists in the development department at KTM PowerParts.

The benefits:

- CNC-machined from high-strength aluminum
- Orange anodized
- Firmer feel throughout the entire suspension travel
- Unchanged suspension travel (measured at shock absorber)
- Unchanged course of the progression curve
- More aggressive setting when compared to standard linkage



THE SXS CYLINDER HEADS WITH VARIABLE COMBUSTION CHAMBER ARE A MUST-HAVE FOR ANY RACER AND OFFER THE FOLLOWING PROPERTIES:

- Cylinder head separate from combustion chamber
- Easy modification of the engine characteristic by changing the combustion chamber insert (e.g., from Motocross to Enduro setting)
- No need to replace the entire cylinder head in case of wear; only the insert needs to be replaced
- The aluminum alloys used provide improved heat dissipation and thus improve performance gains

TO BOOST YOUR MOTORCYCLE'S PERFORMANCE EVEN FURTHER, WE RECOMMEND A COMBINATION OF THE FACTORY CYLINDER HEADS WITH THE FOLLOWING PARTS:

- SXS spark plug
- SXS digital box
- Factory exhaust system

IMPORTANT:

The carburetor jetting must be adjusted to the selected combustion chamber insert and your vehicle model year (e.g. selected combustion chamber insert = Motocross type; vehicle = 250 XC-W model year 16; carburetor jetting to be selected = 250 SX model year 16). The carburetor jettings for models 250 and 300 are identical. When using the "EXTREME" combustion chamber insert, always select the SX carburetor jetting for your vehicle's model year. More information on the carburetor jetting can be obtained from your authorized KTM dealer.

SXS.13.125.044
125/144/150 SX/XC 07-15

SXS.13.250.044
250 SX/XC/XCW 07-16

SXS.13.300.044
300 XC/XCW 08-16



SXS.13.125.081
125 SX 07-15

SXS.13.144.081
144/150 SX/XC 07-15

SXS.13.250.081
250 SX/XC/XCW 07-16

SXS.13.300.081
300 XC/XCW 08-16



SXS CYLINDER HEAD COMBUSTION CHAMBER INSERT EXTREME

This combustion chamber insert is made of a specially developed alloy. The excellent conductivity of this alloy increases the performance of your engine in extreme operations, especially if your engine has to deliver full performance (e.g. with high ambient temperatures, sandy track conditions or other extreme situations).

SXS.13.125.061
125 SX 07-15

SXS.13.144.061
144/150 SX/XC 07-15

SXS.13.250.061
250 SX/XC/XC-W 07-16

SXS.13.300.061
300 XC/XC-W 08-16



SXS CYLINDER HEAD COMBUSTION CHAMBER INSERT MX

Combustion chamber insert manufactured from highest grade aluminum, with standard combustion chamber shape.

SXS.13.250.071
250 SX/XC/XC-W 07-16

SXS.13.300.071
300 XC/XC-W 08-16

SXS CYLINDER HEAD COMBUSTION CHAMBER INSERT ENDURO

Combustion chamber insert manufactured from highest grade aluminum, with enduro tailored combustion chamber shape.

SXS.13.250.091
250 SX/XC/XC-W 07-16

SXS CYLINDER HEAD COMBUSTION CHAMBER INSERT XC

Combustion chamber insert manufactured from highest grade aluminum for more torque.

SXS.16.125.081
125 SX 16-17

SXS.16.150.081
150 SX 16-17
150 XC-W 17

CYLINDER HEAD COMBUSTION CHAMBER INSERT EXTREME

This combustion chamber insert is made of a specially developed alloy. The excellent conductivity of this alloy increases the performance of your engine in extreme operations, especially if your engine has to deliver full performance (e.g. with high ambient temperatures, sandy track conditions or other extreme situations).





SXS.02.125.071

125 SX 00-17
144/150 SX 07-17

SXS SPARK PLUG

This spark plug is designed for improved performance and reliability with the following additional benefits:

- Iridium center electrode tip
- Reinforced earth electrode (against vibration and breakage)
- Special design with improved anti-rusting properties

We recommend use of the SXS spark plug when fitting power-boosting parts, such as SXS cylinder heads, factory exhaust systems or the SXS CDI unit.



SXS.15.125.390

125 SX 07-15

SXS CDI UNIT

The ignition curve of the SXS digital box is specially adapted to the series cylinder head and the use of at least 98 octane fuel.

The advantages:

- Higher peak power and speed
- More torque in the medium speed range
- Improved response
- The best possible performance

We recommend use in combination, with the FMF factory exhaust system and the SXS spark plug for maximum performance.



SXS.14.125.007

125 SX 07-15

SXS.16.125.007 **NEW!**

125 SX 16-17

SXS CYLINDER KIT

This complete cylinder consists of individual components specially machined to minimum tolerances. This guarantees more power throughout the entire rev range. The SXS.16.125.007 kit is delivered with piston included.



SXS.10.150.051

144/150 SX 07-15

SXS CYLINDER HEAD

Specially designed for use on sandy tracks (high thermal loads!).
Volume 14.8 ml = less compression (standard: 13.8 ml).



SXS.16.150.000

125 SX 16-17

150 SX KIT

All the parts for the conversion of your 125 SX to a 150 SX; so that you are one step ahead of your competitors.

SXS.16.125.907 I

125 SX 16-17

(GROUP I CYLINDER ONLY)

SXS.16.150.907 I

150 SX 16-17

150 XC-W 17

(GROUP I CYLINDER ONLY)

SXS PISTON

Specially developed high-performance piston with the following properties:

- Higher performance across the entire power band
- Higher peak power
- Optimized friction
- Only one piston ring
- Special surface coating

Due to the higher load on the engine, the new service intervals specified in the Owner's Manual supplied must be complied with.



SXS.14.300.000

250 SX 14-16

SXS.12.300.000

250 SX 07-13

300 SX KIT

All the parts required for converting your 250 SX to a 300 SX for the open class. More information on the carburetor jetting can be obtained from your authorized KTM dealer.

SXS.17.300.500 **NEW!**

250 XC/XC-W 17

SXS.12.300.100

250 XC/XC-W 07-16

300 OFFROAD KIT

All the parts required for converting your 250 XC/XC-W to a 300 XC/XC-W for the open class. More information on the carburetor jetting can be obtained from your authorized KTM dealer.





016

773.11.953.000

LITHIUM ION BATTERY 5S

The following benefits are the mark of our lithium-ion batteries:

- 2.2 lbs. lighter than the standard battery 773.11.053.000
- 3.5 lbs. lighter than the standard battery 585.11.053.000
- Unbeatable cost/weight saving ratio
- Mountable in any position, as it does not contain acid
- Safe technology and long life

Technical data:

- 12 V maintenance-free lithium-ion battery
- Capacity 1.2 Ah
- Recommended charging current - 2.5 amps
- Maximum charge current for fast charging - 12 amps
- Fast charge with high charging current (up to 90% in 6 min)
- Very low self-discharge (max. 5% per month)
- Balanced discharge/charge of all cells through balancer
- Contains no heavy metals

When mounting on SX-F models from 2016 on later, the battery compartment 790.11.955.044 is also required.



790.11.955.044

SX-F/XC-F 16-17

BATTERY COMPARTMENT

This battery compartment allows you to install extra powerful 5S lithium-ion batteries in your bike.



590.31.017.300

ALL KEIHIN CARBURETORS, FOUR-STROKE

FACTORY MIXTURE CONTROL SCREW

Practical tool for regulating the mixture on the carburetor without the need for any other tools.

017

554.32.900.000 **NEW!**
250/300 SX/XC/XC-W 17

792.32.900.000 **NEW!**
250/350 EXC-F 17

794.32.900.000 **NEW!**
450/500 EXC-F 17

548.32.900.300
250/300 XC-W 13-16

774.32.900.300
250 XCF-W 14-16
350 XCF-W/EXC 13-16

781.32.900.300
450/500 XC-W/EXC 12-15

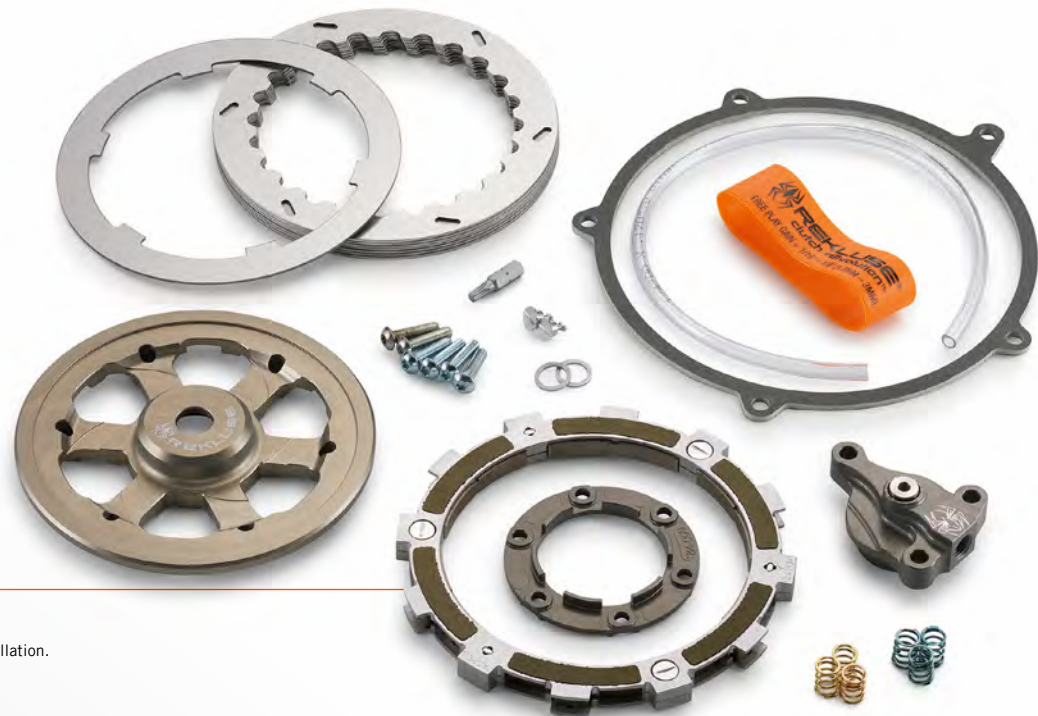
781.32.900.400
450/500 XC-W/EXC 16

REKLUSE EXP 3.0 AUTO-CLUTCH KIT

The latest generation of the Rekluse automatic clutch featuring EXP technology. This automatic clutch utilizes the stock basket and hub for a simple and quick installation.

The benefits:

- Easy external adjustments made via the included slave cylinder
- No stalling in critical situations such as braking, descents and low-speed riding
- Improved traction on slippery/rocky surfaces
- More relaxed, fatigue-free riding
- Not required to use clutch lever, although it is still possible
- Special left hand brake lever kit (781.13.900.000) available for even more control
- Tested and approved by our Factory Offroad riders



792.12.945.044 **NEW!**
350 EXC-F 17

794.12.945.044 **NEW!**
450/500 EXC-F 17

771.12.946.044
250 SX-F 12

772.12.945.044 **KICKSTARTER + E-STARTER**
350 SX-F 11-12

KICKSTART KIT SPORT

All the parts required for adding a kickstarter to your motorcycle. The kickstart kit serves as an indispensable back up when your battery becomes drained on the trail.



781.13.900.000

250/300 SX/XC/XC-W	04-17
250 SX-F/XC-F	06-12
250 XCF-W/EXC	07-17
350 XCF-W/EXC	13-17
400/450/500/530 XCF-W/EXC	08-17

LEFT HAND BRAKE KIT

For use with the auto-clutch. Allows braking of the rear wheel with the left hand, hence providing additional control in critical situations (e.g. steep downhills and right hand turns).



SXS.08.250.030

KEIHIN CARBURETORS 04-12

SXS ACCELERATION PUMP SPRING

Increases the output of the accelerator pump. Benefit: better responsiveness.



516.05.979.000

125/150 SX 16-17
150 XC-W 17

AKRAPOVIC "SLIP-ON LINE"

This Akrapovic slip-on main silencer offers more power and torque, uncompromising race look and a substantial saving in weight.

The advantages:

- More power and torque
- Identical look to our Factory Team
- Manufactured from high-grade titanium, with carbon fiber silencer cap
- Nano coated to prevent oxidation and baked on dirt
- Fixed welded attachment



551.05.981.000

200/250/300 SX/XC/XC-W 11-16

AKRAPOVIC "SLIP-ON LINE"

Akrapovic Silencer – that means years of racing experience, perfect material selection and premium design.

The benefits:

- Minimum weight
- Maximum performance
- Perfectly distributed torque curve
- Long service life



503.05.981.000

125 SX 04-15
150 SX 09-15

AKRAPOVIC "SLIP-ON LINE"



NEW!

556.05.981.000

250/300 SX/XC/XC-W 17

AKRAPOVIC "SLIP-ON LINE"

This Akrapovic slip-on silencer offers an uncompromising race bike with substantial weight savings.

Benefits include:

- More power and torque
- Identical look to our Factory Team
- Manufactured from high-grade titanium
- Permanently welded attachment point

35 YEARS OF RACING EXPERIENCE:

The FMF factory exhausts are specifically designed for the hard life off-road. That is why they are made of high quality, extra strong and durable steel. The nickel-plated, stainless and polished surface ensures the classic look; for years.

Other characteristics include:

- Broader, smoother powerband
- More traction, better throttle control
- Complete with o-rings

For a system with optimized performance and perfect balance we recommend the combination with a FMF Factory silencer.



SXS.11.300.500

250 SX 11-16
250/300 XC 11-16
250/300 XC-W 12-16

SXS.11.200.500

200 XC-W 11-16

FACTORY PIPE

Developed in-house, these pipes have a minimalist look that reflects the high standards set by our factory riders.

Benefits:

- Improved torque curve for optimal rideability
- Minimal weight and maximal performance
- Made from rugged steel
- Untreated surface for a factory look
- Rich, unmistakable sound

We recommend combining them with a Factory silencer for a perfectly tuned and performance-optimized system.



516.05.907.500

125/150 SX 16-17
150 XC-W 17

FACTORY PIPE



NEW!

554.37.994.044

250/300 SX/XC/XC-W 17

EXHAUST FLANGE GUARD

For extreme riding and racing! This exhaust flange protector is designed to provide added strength to the cylinder flange in the event of an unexpected impact to the pipe.



SXS.11.144.500

125 SX 04-15
150 SX 09-15

504.05.907.000

125/150 SX 16-17
125/150 XC-W 17

FACTORY PIPE



554.05.907.500

250/300 SX/XC/XC-W 17

NEW!

FACTORY PIPE

THE FMF FACTORY SILENCERS (MADE IN USA) ARE TOP-PERFORMANCE SILENCERS.

THE BENEFITS:

- Housing made from high-grade, pressed, anodized aluminum
- Factory performance characteristics
- Hi-Flo exhaust technology
- Long service life
- Integrated bracket
- Dynamically formed stainless steel end caps
- Simple fitting

For a perfectly tuned and performance-optimized overall system, we recommend combination with the factory pipe.

UPP.16.05.070

125/150 SX/XC/XC-W 16-17

UPP.15.05.060

200/250/300 SX/XC/XC-W 11-16

FMF POWERCORE 2.1 SILENCER

KTM POWERPARTS is proud to release the newest generation two-stroke performance silencers from FMF. The new POWERCORE 2.1 utilizes a new shape inspired from the 4.1 system.

TITANIUM POWERCORE 2.1:

- Improved throttle response
- 1.5 lbs lighter than stock silencer



UPP.15.05.061

200/250/300 SX/XC/XC-W 11-16

FMF TURBINECORE 2.1 SILENCER

KTM POWERPARTS is proud to release the newest generation two-stroke performance silencers from FMF. The new 2.1 utilizes a new shape inspired from the 4.1 system. Utilizes exclusive FMF "Turbine Dampening System".

- U.S. Forest Service compliant spark arrestor
- The straight through design of the spark arrestor canister and the performance flow stainless steel end cap ensures strenght, durability and most importantly, track and trail proven unrestricted power
- The Turbinecore 2.1 is the #1 spark arrestor in the world



SXS.11.250.550

250 SX 11-16

FMF POWERCORE 2 SILENCER



SXS.11.150.550

125 SX 04-15
150 SX 09-15

504.05.979.000

125/150 SX 16-17
150 XC-W 17

FMF POWERCORE 2 SILENCER



U691.0029

125 SX 04-15
150 SX/XC 09-15

U691.0030

200/250/300 SX/XC/XC-W 11-16

FMF TURBINECORE 2 SILENCER

USFS Spark Arrestor version.
Replacement decal available. U6910070



504.05.979.500

125/150 SX 16-17
150 XC-W 17

FACTORY SILENCER

HIGHLIGHT

USED BY OUR **FACTORY TEAM**

790.05.900.044
250 SX-F/XC-F 16-17

792.05.900.044
350 SX-F/XC-F 17

794.05.900.044 **MAP**
450 SX-F/XC-F 16-17

AKRAPOVIC "EVOLUTION LINE"

- Full titanium system designed for more power and torque with significant weight savings.
 - 250 SX-F system designed with an emphasis in power delivery at high RPM's (6000+ RPM)
 - 450 SX-F includes recommended mapping spec. (available from authorized KTM Dealer)
 - More power and torque
 - Header routing designed for optimum performance with production engine
 - Tuned to comply with current FIM and AMA Amateur noise regulations
- CLOSED COURSE/COMPETITION USE ONLY!





790.05.979.000
250 SX-F/XC-F 16-17

794.05.979.000
350/450 SX-F/XC-F 16-17

AKRAPOVIC "SLIP-ON LINE"

This Akrapovic slip-on main silencer offers more power and torque, uncompromising race look and a substantial savings in weight.

The advantages:

- Improved torque curve combined with easily rideable peak power
- Made from high-grade titanium
- Weight savings: approx. 1 lb.
- Nano coated against oxidation and baked on dirt
- Fixed welded attachment
- Tuned to comply with the currently valid AMA Amateur noise regulations

CLOSED COURSE/COMPETITION USE ONLY!

SXS.13.450.513

250/350/450/505 SX-F/XC-F 07-15
250/350/400/450/
500/530 XCF-W 08-16

796.05.981.000

SX-F/XC-F 16-17

FMF POWERCORE 4 MUFFLER

This FMF slip-on main silencer is made from the highest quality materials, and not only stands out from the standard silencer with its appearance, but has been optimally adapted in terms of torque and power to the power characteristic of the series engine. Installation only possible in combination with original header.

CLOSED COURSE/COMPETITION USE ONLY!

790.05.079.500

250/350/450 SX-F/XC-F 16-17

UPP.15.05.030

250/350/450/500 SX-F/XC-F 07-15
250/350/450/500/530 XCF-W 08-16

FMF FACTORY 4.1 RCT MUFFLER

Exclusive muffler for KTM PowerParts.

The Factory 4.1 RCT incorporates the latest in FMF Resonance Chamber Technology™ both internally and externally. In addition, we achieve a shorter overall length that is less susceptible to crash damage and complementary to our Factory Forward Engineering - moving the muffler closer to the motor to centralize mass. The Factory 4.1 RCT is constructed from only aerospace grade materials that meet our exacting specifications and manufactured 100% at FMF's Southern California factory.

- Blue Anodized Titanium Muffler with Carbon End Cap
- New RTS (Rapid Tuning System)
- FMF uses the highest quality proprietary blend of alloy grade titanium made especially to our standards.
- WHEN PAIRED WITH TITANIUM HEAD AND MID PIPE WEIGHT SAVINGS = 2.5lbs LIGHTER ON 16'-17' 250 SX-F AND 2.6lbs LIGHTER ON 450 SX-F

Can be used with FMF or Stock OEM Header. Recommended mapping spec available for 450 SX-F. (available from authorized KTM Dealer)
CLOSED COURSE/COMPETITION USE ONLY!



UPP.15.050.14
450 SX-F/XC-F 16-17

TITANIUM

790.05.907.500
250/350 SX-F/XC-F 16-17

TITANIUM

UPP.15.050.12
450 SX-F/XC-F 13-15

TITANIUM

UPP.15.050.11
350 SX-F/XC-F 13-15

TITANIUM

UPP.15.050.10
250 SX-F/XC-F 13-15

TITANIUM

FMF MEGABOMB HEADER

Can only be fitted in combination with factory silencer. Recommended mapping spec available for 16-17 450 SX-F/XC-F. (available from authorized KTM Dealer)
CLOSED COURSE/COMPETITION USE ONLY!



UPP.15.05.040

250/350/450/500 SX-F/XC-F 07-15
250/350/450/500/530 XCF-W 08-16

FMF FACTORY 4.1 RCT MUFFLER

Exclusive muffler for KTM PowerParts used by our Factory offroad team.

The Factory 4.1 RCT incorporates the latest in FMF Resonance Chamber Technology™ both internally and externally. In addition, we achieve a shorter overall length that is less susceptible to crash damage and complementary to our Factory Forward Engineering - moving the muffler closer to the motor to centralize mass. The Factory 4.1 RCT is constructed from only aerospace grade materials that meet our exacting specifications and is manufactured 100% at FMF's Southern California factory.

- Natural Titanium Muffler with Titanium End cap
- New RTS (Rapid Tuning System)
- Significant weight savings
- FMF uses the highest quality proprietary blend of alloy grade titanium made especially to our standards. Can be used with FMF or Stock OEM Header.

CLOSED COURSE/COMPETITION USE ONLY!



DEVELOPED BY AKRAPOVIC IN COLLABORATION WITH THE KTM FACTORY TEAM:

The highest quality factory header you can buy for your motorcycle. Top titanium quality and maximum weight reduction are the secrets behind the outstanding successes of the KTM factory team.

THE BENEFITS:

- Increase in performance throughout the rev range
- Made from high quality titanium
- Highest quality workmanship
- Optimum header routing

An expansion chamber is also used on selected factory headers, contributing to optimum torque distribution and noise reduction.



SXS.08.250.500 TITANIUM
250 SX-F 06-12
250 XC-F 07-12
250 XCF-W 07-13

774.05.907.000 TITANIUM
250 XCF-W 14-16
350 XCF-W 12-16

AKRAPOVIC "EVOLUTION LINE" HEADER

Can only be fitted in combination with factory silencer.
CLOSED COURSE/COMPETITION USE ONLY!



SXS.07.450.500 TITANIUM
450/500 SX-F 07-12

781.05.909.000 TITANIUM
450/500 XCF-W 12-16

AKRAPOVIC "EVOLUTION LINE" HEADER

Can only be fitted in combination with factory silencer.
CLOSED COURSE/COMPETITION USE ONLY!

SXS.11.350.500 TITANIUM
350 SX-F/XC-F 11-12

SXS.10.450.500 TITANIUM
450/505 SX-F 07-12

777.05.907.100 TITANIUM
250 SX-F/XC-F 13-15

778.05.907.100 TITANIUM
350 SX-F/XC-F 13-15

789.05.907.100 TITANIUM
450 SX-F/XC-F 13-15

FACTORY HEADER

Can only be fitted in combination with factory silencer.
CLOSED COURSE/COMPETITION USE ONLY!



777.05.979.200 TITANIUM
250/350 SX-F/XC-F 13-15

789.05.979.100 TITANIUM
450 SX-F/XC-F 13-15

775.05.981.000 TITANIUM
250/350 XCF-W 14-16

787.05.981.000 TITANIUM
450/500 XC-W 14-16

AKRAPOVIC "SLIP-ON LINE"

This Akrapovic slip-on main silencer offers more power and torque, uncompromising race look and a substantial savings in weight.

The advantages:

- Improved torque curve combined with easily rideable peak power
 - Made from high-grade titanium
 - Unbeatably low weight
 - Nano coated against oxidation and baked on dirt
 - Fixed welded attachment
 - Tuned to comply with the currently valid AMA Amateur noise regulations
- With removable noise reduction insert. Can also be fitted in combination with original header. We recommend use in combination with a factory header for a further increase in rideability and power development.
CLOSED COURSE/COMPETITION USE ONLY!



781.05.981.100 TITANIUM
250/350/450/505 SX-F 07-12
250/350/400/
450/500/530 XCF-W 08-16

781.05.982.000 TITANIUM (50 STATE LEGAL)
350/500 EXC 12-16

AKRAPOVIC "SLIP-ON LINE"

This Akrapovic silencer has been conceived especially for enduro riders who are looking for the best exhaust system available on the aftermarket and who know how optimum power development can best be achieved on the enduro course or in offroad use. The hexagonal silencer is a perfect match for the sharp lines of the KTM. With removable noise reduction insert. Installation only possible with original header. Can also be fitted in combination with factory headers on 350/400/450/500/530 XCF-W.

SXS.10.450.512 TITANIUM
250/350/450/505 SX-F/XC-F 07-15
250/350/450/500/530 XCF-W 08-16

AKRAPOVIC "SLIP-ON LINE"

This slip-on factory silencer has been developed in collaboration with Akrapovic for the very specific requirements of offroad and motocross use.

The benefits:

- Improved torque curve combined with very rideable peak performance
 - More sensitive throttle response and resulting improved traction
 - Durability suitable for extreme enduro use
 - Made from high grade titanium
 - Welded on brackets
 - Reinforced titanium end cap (factory team standard)
 - Pleasant deep sound
 - Tuned for compliance with the latest applicable noise regulations
- With removable noise reduction insert. Can only be fitted in combination with original header.
CLOSED COURSE/COMPETITION USE ONLY!



DO YOU KNOW ABOUT THE SPECIAL PROPERTIES OF CARBON?

- Extremely light: about 80% lighter than steel with the same load-bearing capacity
- Very stable: 4 times more resilient than aluminum
- Ultimate stiffness and strength
- Free from corrosion
- High continuous temperature resistance
- Low thermal expansion
- And, last but not least, provide a factory look

Personalize your KTM with carbon components from KTM PowerParts – they save weight and look great!



SXS.07.250.535

250 SX-F/XC-F 07-12
250 XCF-W 07-13
450/500/530 XCF-W/EXC 08-16
350 EXC-F 17

SXS.10.450.535

FOR FACTORY HEADER SXS.10.450.550
350 SX-F/XC-F 11-12
350 XCF-W/EXC 12-16
250 XCF-W/EXC 14-16

CARBON EXHAUST GUARD

Suitable for fitting to factory and original headers.
Can only be fitted to headers without an expansion chamber.

U691.2023

250/350/450 SX-F/XC-F 11-15
250/350/450/500 XCF-W 12-16

ALUMINUM EXHAUST GUARD

Give your pants and boots some extra protection from the hot exhaust pipe. This durable aluminum guard bolts right on with only a quick modification to the stock plastic guard. Great additional protection for those riders that squeeze the bike tightly with their knees.



554.05.994.000 **NEW!**

FOR EXHAUST PIPE 554.05.007.000

504.05.994.000

FOR 125 EXHAUST PIPE 504.05.007.100

503.05.009.510

FOR 125 EXHAUST PIPE
503.05.009.500 AND 503.05.007.200

503.05.994.600

FOR 125 EXHAUST PIPE 503.05.007.300

503.05.994.000

FOR 125 EXHAUST PIPE 503.05.107.000

U690.7832

FOR 250/300 EXHAUST PIPE 548.05.009.200,
548.05.007.100, 548.05.007.300

551.05.994.100

FOR EXHAUST PIPE
548.05.107.000 AND SXS.11.300.500

U690.9867

200 XC/XC-W 06-16

CARBON PIPE GUARD

The featherweight carbon protector provides maximum service life of your exhaust. Ideal protection against roost, branches, etc.



781.02.924.000

TWO-STROKE 04-16
 SX-F/XC-F 06-15
 XCF-W/EXC 06-16

LOCK-ON GRIP SET

Grip replacement made easy! With the KTM PowerParts lock-on grip set, the grips are locked onto the handlebar by a clamp. The laborious process of gluing the grips and securing them with wire is no longer necessary. Includes three different cams to work with two and four stroke models!

**NEW!**

790.02.924.100

SX/XC-W/EXC-F 17

LOCK-ON GRIP SET

Grip replacement made easy! With the KTM PowerParts lock-on grip set, the grips are locked onto the handlebar by a clamp. The laborious process of gluing the grips and securing them with wire is no longer necessary. Includes three different cams to work with two and four stroke models!



790.02.924.000

SX-F/XC-F 16

LOCK-ON GRIP SET

Grip replacement made easy! With the KTM PowerParts lock-on grip set, the grips are locked onto the handlebar by a clamp. The laborious process of gluing the grips and securing them with wire is no longer necessary.



630.02.021.100

DUAL COMPOUND GRIP SET

The KTM 2K (2K = 2 different materials) grip combines the durability of KTM standard grips and the comfort of the soft KTM grips.

- Harder orange material on the inside and at the grip ends for a long service life
- Softer black material on the outside, where the hand lies on the grip, for increased comfort

630.02.021.200

OPEN DUAL COMPOUND GRIP SET

Same as 630.02.021.100, but with open grip ends for closed handguards or bar ends.



548.02.021.000

HALF-WAFFLE SOFT GRIP SET

The special half-waffle grip has been developed to meet the demands and preferences of our factory riders, with the clear objectives: comfort AND safety – because no calluses on the palms and secure grip mean less stress when riding.

The benefits:

- Ergonomic; contour matched to the shape of the hand for maximum comfort
- Small "half-waffle" ribs on the rear for secure grip
- Made from two materials with different grades of hardness
- Available in two versions (soft and medium)
- Three areas for the metal safety wire

548.02.021.100

HALF-WAFFLE MEDIUM GRIP SET

000.62.030.051

GRIP GLUE 20 G

A firm hold for your grips.



U695.1716

GRIP DOUGHNUT SET

Optimum protection against blisters on the thumbs with these coated neoprene rings. Simply slide onto the grips.



NEW!

790.02.013.100

SX/XC-F 16
SX/XC-W/EXC-F 17

BLANK THROTTLE TUBE

This gives you the option of using traditional grips on models that come standard with Lock-On grips.



781.02.922.000

MUD GRIPS

The mud grips are simply pulled over existing grips and guarantee a secure hold on the grip in extremely muddy conditions.



781.12.964.000

SX-F/XC/EXC-W/EXC

GRIP HEATERS

Ensures warm hands, even in bad weather. Can only be fitted by an authorized KTM dealer. We recommend the use of an auxiliary wiring harness 777.11.979.000 for installation.



551.02.925.000

TWO-STROKE 04-16

781.02.925.000

SX-F/XC-F 05-15
XCF-W/EXC 05-16

THROTTLE CAM SYSTEM

The throttle cam system includes three differently profiled cams, each with a different gear ratio. This allows the throttle response characteristics to be varied in accordance with personal preferences.



772.02.923.200

SX-F/XC-F 05-15
XCF-W/EXC 05-16

QUICK TURN THROTTLE

With the quick turn throttle, the twisting movement on the throttle twist grip is reduced by approx. 10%. That's how to get a holeshot!



781.12.916.000

SX/XC 04-12
XC-W/EXC 04-13

787.12.916.000

SX 13-17
EXC/XC-W 14-17

FRONT STRAP

- High-strength nylon strap
- Indispensable for use on extreme terrain
- Attaches to fork tube



796.12.917.000

NEW!

125/150 SX 16-17
250 SX/XC 17
SX-F/XC-F 16-17
XC-W/EXC-F 17

787.12.917.000

125/150 SX 04-15
250 SX/XC 04-16
SX-F/XC-F 04-15
XC-W/EXC 06-16

REAR STRAP

- High-strength nylon strap
- Indispensable for use on extreme terrain
- Makes it easy to get your bike upright
- Attaches to rear frame



790.12.917.000

NEW!

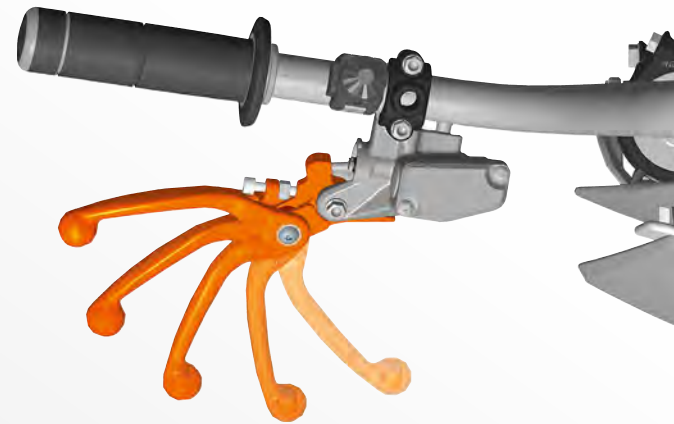
SX/XC 11-17
XC-W/EXC 12-17

GRAP HANDLE

- High-strength aluminum grip
- Indispensable for use on extreme terrain
- Makes it easy to get your bike upright
- Attaches to silencer bracket on rear frame

EVER HAD TO GIVE UP DURING THE RACE BECAUSE OF A BROKEN CLUTCH OR BRAKE LEVER?

Minimize the possibility of that happening with these levers that are designed to fold away on contact with the ground.



787.02.931.044/04 BREMBO®

SX/XC/XC-W/EXC

FLEX CLUTCH LEVER

Suitable for all hydraulic Brembo® clutch fittings.



787.13.902.044/04 BREMBO®

SX/XC/XC-W/EXC

14-17

FLEX BRAKE LEVER

Suitable for all hydraulic Brembo® brake systems.



780.02.831.200/04 BREMBO®

SX/XC/XC-W/EXC

06-17

FLEX CLUTCH LEVER BY ARC

Suitable for all hydraulic Brembo® clutch fittings.



780.13.802.200/04 BREMBO®

SX/XC/XC-W/EXC

01-13

781.13.902.044/04 BREMBO®

SX/XC/XC-W/EXC

14-17

FLEX BRAKE LEVER BY ARC

Suitable for hydraulic Brembo® brake systems.



UPP.15.020.22 BREMBO®

SX/XC/XC-W/EXC

01-13

UPP.15.020.21 BREMBO®

SX/XC/XC-W/EXC

14-17

MEMLON FLEX CLUTCH LEVER BY ARC

Suitable for hydraulic Brembo® brake systems.



UPP.15.020.20 BREMBO®

SX/XC/XC-W/EXC

06-17

MEMLON FLEX BRAKE LEVER BY ARC

Suitable for all hydraulic Brembo® clutch fittings.





DO YOU KNOW ABOUT THE BENEFITS OF FORGED BRAKE AND CLUTCH LEVERS FROM KTM POWERPARTS?

- Manufactured from high-strength aluminum, forged and then CNC-machined
- This extensive production process guarantees a long service life, and a precise fit
- Ergonomically perfected shape, the result of years of racing experience
- Predefined breaking point
- Orange anodized



787.13.992.044/04 BREMBO®
SX/XC/XC-W/EXC 14-17

BRAKE LEVER
Suitable for all hydraulic Brembo® brake systems.



780.13.902.000/04 BREMBO®
SX/XC/XC-W/EXC -13

BRAKE LEVER
Suitable for hydraulic Brembo® brake systems.

780.02.931.000/04 MAGURA
SX/XC/XC-W/EXC -13

CLUTCH LEVER
Suitable for all hydraulic Magura clutch mountings up to model year 2008.



780.02.931.100/04 MAGURA
SX/XC/XC-W/EXC

CLUTCH LEVER
Suitable for all hydraulic Magura clutch fittings where the Flex lever is fitted as standard.



780.02.931.200/04 BREMBO®
SX/XC/XC-W/EXC

CLUTCH LEVER
Suitable for all hydraulic Brembo® clutch mountings.



HIGH VERSION

603.02.179.000/04 ■

603.02.179.100/28 ■

603.02.179.100/30 ■

SX/XC/XC-W/EXC

HANDGUARDS

The closed, two-component plastic handguards developed by KTM feature a black center section that offers maximum strength for optimum protection. The colorful upper and lower parts are highly flexible and endure even the roughest of treatment without complaint. Available in two different heights.



LOW VERSION

780.02.079.100/04 ■

780.02.079.200/28 ■

780.02.079.200/30 ■

SX/XC/XC-W/EXC

HANDGUARDS



765.02.979.000/04 ■

765.02.979.000/28 □

765.02.979.100/30 ■

SX/XC/XC-W/EXC

ALUMINUM HANDGUARDS

These handguards developed especially for KTM bikes are an indispensable companion for serious offroad and supermoto use. The wide, spacious design ensures excellent mobility and maximum protection against impact, roost, branches, etc. Cannot be fitted with Twinwall handlebar.



USED BY OUR
FACTORY TEAM

THANKS TO SPLITTING OF THE SURFACES, THESE OPEN, VERY LIGHT KTM (MX) HANDGUARDS ENSURE AN UNCOMPROMISING RACING LOOK AND MAXIMUM PROTECTION.

In two-component injection moulding technology:

- Black center section = maximum strength for optimum protection
- Colored upper and lower parts = highly flexible for enduring the roughest of treatment

The choice is yours: attached directly to the handlebar with a plastic bracket or directly to the lever mounting with a special adaptor. Cannot be fitted with Twinwall handlebar.



777.02.979.000/04 ■

777.02.979.000/28 ■

777.02.979.000/30 ■

SX/XC/XC-W/EXC

MX HANDGUARDS

Mounted directly on the handlebar with a plastic bracket.

781.02.979.100/04 ■

781.02.979.100/28 ■

781.02.979.100/30 ■

125/150 SX/XC	09-13
250/300 SX/XC/XC-W	06-13
250/350 SX-F/XC-F	11-13
450 SX-F/XC-F	13
200 XC-W	09-13
250/350/400/450/500/530 XCF-W/EXC	08-13

MX HANDGUARDS

Attached directly at the levers with a special mounting.



777.02.179.000/EB ■ **NEW!**

777.02.179.000/04 ■

777.02.179.000/28 ■

777.02.179.000/30 ■

SX/XC/XC-W/EXC

14-17

HANDGUARDS

Attached directly at the levers with a special mounting.

770.02.079.000/04 ■

SX/XC/XC-W/EXC	00-08
250/300 SX/XC/XC-W/EXC	09-16
250 XCF-W	09-12
400/450/500/530 XC-W/EXC	09-15

HANDGUARDS

Thanks to splitting of the surfaces, these open, very light KTM handguards ensure an uncompromising racing look in the angular KTM design. In two-component injection moulding technology:

- Black mid-section = maximum strength for optimum protection
- Orange top and bottom parts = highly flexible, enduring even the roughest of treatment



U695.1375

RENTHAL/NEKEN

U695.1406

MAGURA

ALUMINUM HANDGUARDS PROBEND

The KTM Pro Bend handguards feature rugged aluminum bars that are shaped to give your hands and levers plenty of space. In addition, they have C shaped mounting brackets for easy routing of cables and hoses. The high impact plastic hand shields have a sleek profile that offers the perfect balance of protection and style. Note: Some KTM models now come stock with tapered Neken handlebar 780.02.001.000/17 use the U691.1023 handguard set for the proper fit.

U691.0026 ■

U691.0027 ■

REPLACEMENT SHIELD FOR PROBEND



UPP15.02.010

CENTER REACH MOUNT PROBEND HANDGUARDS

By mounting our handguards to the lower portion of the handlebar, we have increased clamping pressure, eliminated application variables, and provided unparalleled clearance for cable routing. By doing so, we have made it much simpler to buy handguards. Replacement shields: UPP15.02.011 Not compatible with EXC models.

USED BY OUR **KTM** FACTORY TEAM

UPP.15.02.044

X-FORCE HANDGUARDS

Exclusive Team Edition color only available through KTM PowerParts! The X-Force is the newest addition to Acerbis' offroad handguard line-up. The X-Force, tested by KTM Factory Rider Ryan Dungey, is particularly versatile and provides maximum protection against roost, hits and inclement weather conditions. The X-Force features a universal mounting kit allowing the handguards to be mounted above or below levers. The included spoilers allow the handguards to be mounted with or without ventilation.



USED BY OUR **KTM** FACTORY TEAM

UPP.15.02.040

X-FACTOR HANDGUARDS

Exclusive Team Edition color only available through KTM PowerParts! The X-Factor is an all-new handguard made for those looking for the ultimate in style and protection. Built for extreme riding conditions, the X-Factor features an oversized, 35mm, black anodized bar, with a "C" shape design, which offers a higher level of impact resistance than standard aluminum bars. Comes complete with universal X-Factor mounting hardware. The dual-injected polypropylene shield features a carbon fiber like texture, three-bolt removal system for easy access to the bar, and a larger 150mm outer diameter that offers more coverage from roost, debris and extreme conditions.

Replacement parts available: Shields UPP1502041, Bars UPP1502042, Mount Kit UPP1505043



U690.7896 ■

U690.7897 ■

PLASTIC DEFLECTOR SET

Durable plastic shields to mount with the U690.7893 or U691.1027 aluminum handguards.



U690.7894

MAGURA

U690.7895

RENTHAL/NEKEN

U691.1028

RENTHAL TWINWALL

ALUMINUM CLAMPS EASY ROUTE

Designed to match the U690.7893 handguard. The curved shape of the clamp allows plenty of room to route cables and hoses. Three different tapers available for the perfect fit. Note: Some KTM models now come stock with tapered Neken handlebar 780.02.001.000/17. Use the U691.0015 clamp set.



U690.7893

ALUMINUM HANDGUARDS BLACK

Used by the top off road riders around the country these handguards are made from high-quality aluminum and finished with tough black anodizing. Mounting clamps are sold separately to ensure the optimized fit for your particular handlebar.

U691.1027

RENTHAL TWINWALL

ALUMINUM HANDGUARDS BLACK

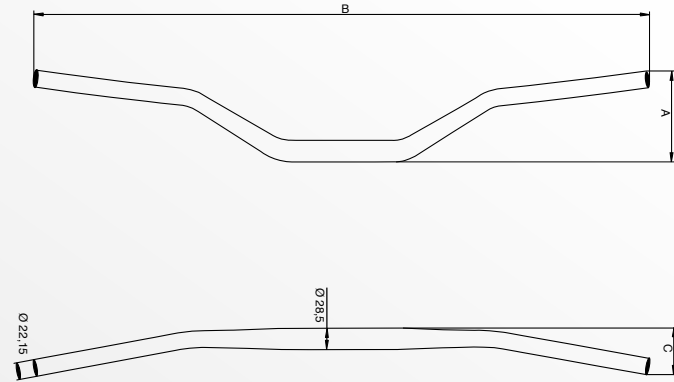
Special length and shape to work perfectly with Renthal Twinwall handlebars.



**DO YOU KNOW THAT KTM HANDLEBARS MUST WITHSTAND VERY ELABORATE AND SPECIALLY DEVELOPED TEST CYCLES BEFORE THEY COME TO MARKET?
THE FACTS:**

- All KTM handlebars are made from EN AW 7010 T6 aluminum
- 28.5 mm diameter in the clamping area
- 22.15 mm diameter in the lever area
- Position markings for simple setting
- Large variety of sizes and shapes

You'll definitely find the perfect handlebar for your preferred riding position with the sizing table for KTM handlebars.



U690.9866

RENTHAL FATBAR HANDLEBAR ORANGE

Renthal 604, orange, 99 mm, 802 mm, 54 mm

U691.2020

RENTHAL FATBAR HANDLEBAR ORANGE

Renthal 827, orange, 117 mm, 811 mm, 66 mm

KTM Item Number	Model	Color	A	B	C
548.02.001.100/17	SX/XC/XC-W/EXC	grey	120	805	63
548.02.101.200/17	SX/XC/XC-W/EXC	grey	130	808	65
548.02.001.300/17	SX/XC/XC-W/EXC	grey	120	803	64
548.02.001.400/17	SX/XC/XC-W/EXC	grey	120	808	64
548.02.001.300/04	SX/XC/XC-W/EXC	orange	115	806	62
590.02.101.200/17	SX/XC/XC-W/EXC	silver	120	808	63
773.02.001.100/17	SX/XC/XC-W/EXC	grey	110	806	81
777.02.001.000/30	SX/XC/XC-W/EXC	black	117	811	77
780.02.001.000/17	SX/XC/XC-W/EXC	grey	114	808	66



U695.1393

TWINWALL RENTHAL HANDLEBAR

The Twinwall, in KTM orange design, combines two handlebars in one: An exterior guarantees maximum strength against external damage (e.g. falling over) and is also anodized against corrosion. The interior, made of a special alloy, is also hard anodized to protect it from damage by the handlebar controls. Nylon inserts in the inner tube allow thinner walls. This saves weight and has a positive effect on the flexing properties. Rubber seals at the crossing points of the two tubes to prevent the ingress of water, dirt, cleaning agents, and other contaminants. Comes with handlebar padding.



790.01.939.031 31 MM
 790.01.139.036 36 MM*
 790.01.939.041 41 MM
 790.01.939.046 46 MM
 790.01.939.051 51 MM
 SX/XC -15
 XC-W/EXC -17



HANDLEBAR SUPPORT
 *Stock Height

548.01.043.012 12 MM
 548.01.043.020 20 MM
 SX/XC -15
 XC-W/EXC -17



HANDLEBAR RISER
 Can only be fitted in combination with handlebar support 590.01.039.100 (standard on EXC models up to MY 2011).

SXS.07.125.200
 SX/XC -15
 XC-W/EXC -17



PHDS - PROGRESSIVE HANDLEBAR DAMPING SYSTEM
 The CNC-machined handlebar mounting with cushioning rubber inserts relieves wrist and shoulder joints.
 Further benefits of the PHDS:
 - Cushioning of heavy hits
 - Absorption of vibration from chassis and engine
 - Additional handlebar damping in horizontal direction
 - Optimum steering precision
 - Handlebar height adjustable to 2 positions
 - Further damping elements available in three degrees of hardness (soft, medium, hard) for individual tuning
 PHDS bar pad: SXS.07.250.800
 Replacement Elastomers available:
 Green (Soft) SXS.05.125.203, Yellow (Standard) SXS.05.125.204, Red(Hard) SXS.05.125.205.

790.01.939.500 **NEW!**
 SX/XC -15
 XC-W/EXC -17



PHDS – PROGRESSIVE HANDLEBAR DAMPING SYSTEM
 This CNC milled handlebar bracket with shock-absorbing rubber inserts protects your wrist and shoulder joints.
 Other benefits of the PHDS:
 - Helps absorb hard shocks
 - Absorbs chassis and engine vibrations
 - Additional handlebar damping on the horizontal axis
 - Optimal steering precision
 - Handlebar position can be set at 2 different heights
 - Additional absorbing elements available in three different hardnesses (soft, medium, hard) for individual customization
 - Replaces the factory-installed rubber damping inserts in the handlebar bracket PHDS handlebar pad: SXS.07.250.800

789.01.939.044 32 MM
 789.01.939.144 37 MM
 789.01.939.244 42 MM
 789.01.939.344 47 MM
 789.01.939.444 52 MM
 SX/XC -15
 XC-W/EXC -16



HANDLEBAR SUPPORT
 Available in five different heights. Included in the kit are 2 x handlebar support lower parts and 2 x fastening bolts. The upper parts and bolts required for clamping the handlebar are taken from the original handlebar support.

777.01.939.010 10 MM
 777.01.939.020 20 MM
 777.01.939.030 30 MM
 SX/XC -15
 XC-W/EXC -17



CNC HANDLEBAR RISER
 These CNC-machined, high-strength aluminum handlebar risers are extremely robust thanks to their special screw fastening (from below) on the triple clamp. Twisting and bending are therefore practically impossible. Use of these handlebar risers is only possible on CNC-machined triple clamps. Available in three different heights.

790.01.940.144
 SX/XC -15
 XC-W/EXC -17

BUSHING KIT FOR HANDLEBAR MOUNT
 With this bushing kit you can convert the standard damped handlebar support on your bike to a rigid handlebar support.



USED BY OUR
FACTORY TEAM

UPP.15.02.035

22 MM CLAMPS (NON-RUBBER MOUNTED)

UPP.15.02.036

20 MM CLAMPS

UPP.15.02.037

SX/XC 16-17

GPR V4 STABILIZER KIT

High-quality billet construction and used by our KTM FACTORY OFFROAD RACE TEAM. Raises the bar height by 13 mm. Post mount included.



770.12.005.000

SXS STEERING DAMPER

Greater safety and stability at the front forks under speed. This extremely light and fully adjustable KTM steering damper offers top performance for the price. The sophisticated damper mounting allows for individual steering adjustments even after installation. Very low profile design.



585.12.050.100

STEERING DAMPER

Have you ever had the handlebars ripped out of your hands? This high-end steering damper provides maximum control on fast tracks and a significant increase in safety!

Further advantages:

- Extremely light-weight
- Sensitive feedback behavior
- High speed setting
- Optimum 25 click setting range

Proven success with the KTM Rally Team.

Steering head bolts 548.01.036.000 must be installed when mounted on XC-W/EXC 15-16, 125/150 SX 15, 250 SX/XC 15-16, SX-F/XC-F 15



585.12.050.044

CAST TRIPLE CLAMP 03-07

585.12.050.144

SX/XC -15
XC-W/EXC -16

CLAMP FOR STEERING DAMPER

585.12.050.544 FACTORY TRIPLE CLAMP

CLAMP FOR STEERING DAMPER

Counter bearing 772.12.905.444 must be installed for use with SX models starting with MY 16.



770.12.005.144

SX/XC -15
XC-W/EXC 12-16

CLAMP FOR SXS STEERING DAMPER

770.12.005.544 FACTORY TRIPLE CLAMP

CLAMP FOR SXS STEERING DAMPER

Counter bearing 772.12.905.444 must be installed for use with SX/XC models starting with MY 16.



790.12.950.000

SX/XC 16-17

CLAMP FOR SXS STEERING DAMPER



770.12.005.644

PHDS CLAMP FOR SXS STEERING DAMPER

This bracket is required for fitting PHDS handlebar support SXS.07.125.200 in conjunction with SXS steering damper 770.12.005.000 or steering damper 585.12.050.100, whereby the latter is only permissible if steering damper clamp 585.12.050.144 or 585.12.050.544 is used.



790.12.970.000

SX/XC 16-17

BRACKET FOR STEERING DAMPER



772.12.905.444

SX/XC -15
XC-W/EXC -16

BRACKET FOR STEERING DAMPER



772.39.974.200

250/350 SX-F/XC-F	11-16
450/500 SX-F/XC-F	13-16
250/350/450 XC-F*	16

515.39.974.200

TWO-STROKE

**MAP SWITCH**

Ignition curve adjustment made easy! With this switch, you can change the ignition curve conveniently from the handlebar on models featuring a digital box with pre-programmed ignition curves. (Whether or not your KTM has pre-programmed ignition curves can be found in the motorcycle owner's manual).

*Launch control function enabled when used with model year 16 XC-F

777.11.969.044

XC-W/EXC 12-16

PULL SWITCH BRACKET

With this bracket the pull switch has an accessible, defined location. Recommended in combination with the Y-distributor switch 777.11.979.044.



777.11.979.000

AUXILIARY WIRING HARNESS

We recommend use of this auxiliary wiring harness with all powered accessories. With this wiring harness, you also have the option of fitting such powered accessories as grip heaters or fans to your XC / XC-W / EXC. Please note: The power consumer is now connected directly to the battery. Y-DISTRIBUTOR SWITCH 777.11.979.044 is recommended to control power to added accessories.



551.39.904.100

200 XC-W	13-16
250 XC/XC-W	08-16
300 XC/XC-W	07-16

STATOR KIT

Ensures significantly higher power output and is required for use of the X2 light on all EXC models. We also recommend extra power when using other additional electrical components, e.g. fan, heated grips, etc. Only for use on two-stroke bikes with an electric starter, since a battery is required!



777.11.979.010

Y-DISTRIBUTOR

The Y-distributor allows you to connect two power consumers to auxiliary wiring harness 777.11.979.000.



780.39.904.000

250 XCF-W	07-11
400/450/530 XCF-W	08-11

STATOR KIT

Ensures significantly higher power output and is required for use of the X2 light on all XC-W models (except four-stroke XCF-W models as of MY 2012). We also recommend extra power when using other additional electrical components, e.g. fan, heated grips, etc.

781.12.920.000

HOURLY METER

Know exactly when the next service is due.



781.12.920.044

HOURLY METER

To mount hour meter 781.12.920.000 on the triple clamp.



777.11.979.044

Y-DISTRIBUTOR

The Y-distributor allows you to connect two power consumers to auxiliary wiring harness 777.11.979.000. The connected power consumer can be switched off with the integrated switch. This prevents the battery from being drained unnecessarily.



551.31.003.044

XC-W (TWO-STROKE) 06-17

CARBURETOR HEATING

Prevents the carburetor from freezing in winter riding conditions.





781.02.994.100

SX-F/XC-F -15
XCF-W/EXC -16

THROTTLE CABLE PROTECTION

This protector is simply attached to the throttle cable guide on the throttle grip, reinforcing the throttle cable at its weakest point.



SXS.07.250.800

PHDS BAR PAD

Provides optimum protection in KTM Racing fashion.



790.02.901.050

BAR PAD

Provides optimum protection with an added time card slot. A small extra pocket allows you to stow small items. Can also be fitted in combination with the PHDS-handlebar support.



548.02.005.000

BAR ENDS

Protects grip ends from grazing in the event of a fall.



502.12.040.000/30

RACING MIRROR

Left-hand version, light and robust.
CLOSED COURSE / COMPETITION USE ONLY!



777.02.944.000

CNC CLAMP WITH SLIDE INSERT

The clamp and its plastic insert are designed in such a way that the brake and clutch controls twist in the event of a minor fall, thereby reducing the risk of a lever breaking. Fits all Brembo® brake and clutch controls.





USED BY OUR **KTM**
FACTORY TEAM

DO YOU KNOW THAT ALL KTM CNC PARTS ARE MANUFACTURED FROM HIGHEST QUALITY ALUMINUM AND THEREFORE NOT ONLY LOOK GOOD, THEY ALSO WITHSTAND THE TOUGHEST TREATMENT? With the anodized aluminum components in the original factory look from the PowerParts range, you can turn your KTM into something very special.

504.37.905.044

125/150 SX 16-17
150 XC-W 17

FACTORY CONTROL COVER



773.38.941.044

250 SX-F/XC-F 13-17
350 SX-F/XC-F 11-17
450 SX-F/XC-F 16-17
450/505 SX-F/XC-F 07-12
250 XCF-W/EXC-F 14-17
350 XCF-W/EXC-F 12-17
400/450/530 XCF-W/EXC 08-11
450/500 EXC-F 17

750.38.041.100

450 SX-F/XC-F 13-15
450/500 XCF-W/EXC 12-16

FACTORY OIL FILTER COVER



U695.1157

250 SX-F/XC-F 06-12
450/525 SX 00-06
250 XCF-W 07-13
250/400/450/525 EXC 99-07

FACTORY OIL FILTER COVER



794.30.920.044

SX/XC/XC-W/EXC

FACTORY OIL PLUG



SXS.09.300.245

250 SX/XC/XC-W 07-17
300 XC/XC-W 08-17

FACTORY CONTROL COVER



792.38.904.044

250/350 SX-F/XC-F 16-17
250/350 EXC-F 17

794.38.904.044

450 SX-F/XC-F 16-17
450/500 EXC-F 17

FACTORY OIL PUMP COVER



SXS.07.450.265

250/450 SX-F/XC-F 13-15
350 SX-F/XC-F 11-15
250 XCF-W 14-16
350/400/450/500 XCF-W/EXC-F 08-16

FACTORY OIL PUMP COVER



NEW!

504.35.952.044

125/150 SX 16-17
150 XC-W 17

FACTORY WATER PUMP COVER

The weight optimized water pump cover ensures maximum water flow.



SXS.11.250.235

250 SX-F/XC-F 09-12
250 XCF-W 09-13

SXS.11.350.235

250 SX-F/XC-F 13-15
350 SX-F/XC-F 11-15
250 XCF-W/EXC-F 16
350 XCF-W/EXC-F 12-16

SXS.07.450.235

450/505 SX-F/XC-F 07-12

FACTORY CLUTCH COVER OUTSIDE



794.35.952.044

450 SX-F/XC-F 16-17
450/500 EXC-F 17

FACTORY WATER PUMP COVER



554.30.926.044

250/300 SX/XC/XC-W 17

504.30.926.044

125/150 SX 16-17
150 XC-W 17

792.30.926.044

250/350 SX-F/XC-F 16-17
250/350 EXC-F 17

794.30.926.044

450 SX-F/XC-F 16-17
450/500 EXC-F 17

FACTORY CLUTCH COVER OUTSIDE



792.35.952.044

250/350 SX-F/XC-F 16-17
250/350 EXC-F 17

FACTORY WATER PUMP COVER



772.30.902.144

250/350 SX-F/XC-F 11-17
450/505 SX-F/XC-F 07-12
250/350 XCF-W/EXC-F 12-17

FACTORY IGNITION COVER PLUG



USED BY OUR **KTM**
FACTORY TEAM



058

CNC PARTS ANODIZED

794.13.951.000

125/150 SX/XC 16-17
250 SX/XC 17
SX-F/XC-F 16-17
XC-W/EXC-F 17

STEP PLATE FOR BRAKE LEVER

Wider contact surface than standard:
- +8 mm on 125/150 SX/XC-W, 450 SX-F
- +16 mm on 250/300 SX/EXC, 250/350 SX-F/EXC-F



794.34.931.044

125/150 SX/XC 16-17
250 SX/XC 17
SX-F/XC-F 16-17
XC-W/EXC-F 17

STEP PLATE FOR SHIFTING LEVER

7 mm wider contact surface than standard.



548.13.951.100

125/150 SX -15
250 SX -16
SX-F -15
SMR -14
EXC -16

STEP PLATE FOR BRAKE LEVER

7 mm wider contact surface than standard.



777.07.908.244

SX 13-17

FACTORY FUEL TANK CAP



781.07.908.144

3/4" VERSION

FACTORY FUEL TANK CAP



777.34.931.144

125/150 SX/XC -15
250 SX/XC -16
SX-F/XC-F -15
XC-W/EXC-F -16

STEP PLATE FOR SHIFTING LEVER

5 mm wider contact surface than standard.



U695.1010

FACTORY FUEL TANK CAP VENT



U695.1981

SX/XC/XC-W/EXC 04-17

REAR BRAKE RESERVOIR CAP



SXS.08.300.040

FOR 48 MM FORKS

FACTORY KNOB ADJUSTER SET

Not suitable for air forks.



548.13.960.050

SX/XC/XC-W/EXC 04-17

REAR BRAKE RESERVOIR EXTENDER

This extender increases the volume of the foot brake cylinder. In conjunction with the additional cooling ribs it minimizes the heat-up of the brake fluid and eliminates dangerous "fading" almost completely. Space requirements: Total height including cover approximately 40.5 mm.



SXS.05.450.210

SX/XC/XC-W/EXC

BREMBO®

HAND BRAKE CYLINDER AND HYDRAULIC CLUTCH COVER



SXS.05.450.220

125-300 SX/XC/XC-W 00-08

HYDRAULIC CLUTCH COVER

Installation possible with all Magura clutch master cylinders.



604.02.933.144

125/150 SX/XC 09-15
450 SX-F/XC-F 09-12
125/200 XC-W 09-16

HYDRAULIC CLUTCH COVER



NEW!

796.08.001.000/EB ■

796.08.001.000/28 □

XC-W/EXC-F 17

HEADLIGHT MASK

790.08.007.000/EB ■

790.08.007.000/28 □

125/150 SX/XC 16-17
250 SX/XC 17
SX-F/XC-F 16-17
XC-W/EXC-F 17

FRONT NUMBER PLATE

790.08.054.000/EB ■

790.08.054.000/28 □

125/150 SX/XC 16-17
250 SX/XC 17
SX-F/XC-F 16-17
XC-W/EXC-F 17

SHROUD SET

NEW!

796.08.013.000/EB ■

796.08.013.000/28 □

XC-W/EXC-F 17

REAR FENDER

790.06.003.000/EB ■

790.06.003.000/28 □

125/150 SX/XC 16-17
250 SX/XC 17
SX-F/XC-F 16-17
XC-W/EXC-F 17

AIR BOX COVER

790.08.010.000/EB ■

790.08.010.000/28 □

125/150 SX/XC 16-17
250 SX/XC 17
SX-F/XC-F 16-17
XC-W/EXC-F 17

FRONT FENDER

790.08.013.000/EB ■

790.08.013.000/28 □

125/150 SX 16-17
250 SX 17
SX-F 16-17

REAR FENDER

790.06.004.000/EB ■

790.06.004.000/28 □

125/150 SX/XC 16-17
250 SX/XC 17
SX-F/XC-F 16-17
XC-W/EXC-F 17

AIR BOX PART RIGHT

777.01.094.100/EB ■

777.01.094.100/28 □

125/150 SX/XC 16-17
250 SX/XC 17
SX-F/XC-F 16-17
XC-W/EXC-F 17

FORK PROTECTION SET

790.06.001.000/EB ■

790.06.001.000/28 □

125/150 SX/XC 16-17
250 SX/XC 17
SX-F/XC-F 16-17
XC-W/EXC-F 17

FILTER BOX LOWER PART

790.06.007.000/EB ■

790.06.007.000/28 □

125/150 SX/XC 16-17
250 SX/XC 17
SX-F/XC-F 16-17
XC-W/EXC-F 17

FILTER BOX SIDE COVER

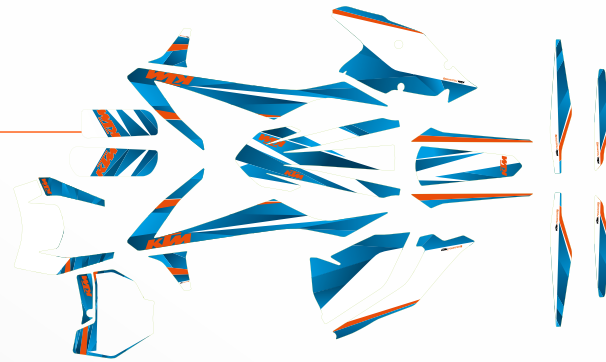


NEW!

790.08.990.100

XC-W/EXC-F 17

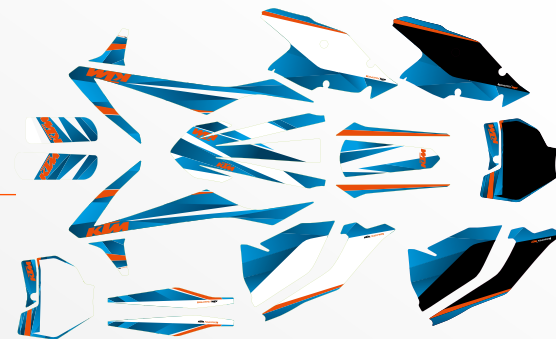
"STYLE" GRAPHIC KIT



790.08.990.000

125/150 SX/XC 16-17
SX-F/XC-F 16-17
250/300 SX/XC 17

"STYLE" GRAPHIC KIT



792.08.990.000

125/150 SX/XC 16-17
250/300 SX/XC 17
SX-F/XC-F 16-17

FACTORY GRAPHICS KIT



777.08.990.300

125/150 SX 15
250/300 SX/XC 15-16
SX-F/XC-F 15

FACTORY GRAPHICS KIT



UPP.16.08.010

125/150 SX/XC -17
SX-F/XC-F -17
250/300 SX/XC -17

UPP.15.08.010

SX/XC 13-15

ORANGE BRIGADE TEAM REPLICAS GRAPHICS





NEW!

794.08.990.000

125/150 SX/XC	16-17
250/300 SX/XC	17
SX-F/XC-F	16-17
XC-W/EXC	17

FACTORY ENDURO GRAPHICS KIT



NEW!

796.08.990.000

125/150 SX/XC	16-17
250/300 SX/XC	17
SX-F/XC-F	16-17
XC-W/EXC	17

SIX DAYS GRAPHICS KIT "SPAIN"



787.08.990.600

XC-W/EXC 16

FACTORY ENDURO GRAPHICS KIT



787.08.990.500

XC-W/EXC 16

SIX DAYS GRAPHICS KIT "SLOVAKIA"





787.08.990.300
XC-W/EXC 14-15

SIX DAYS GRAPHICS KIT "ITALY"

787.08.990.400
XC-W/EXC 14-15

SIX DAYS GRAPHICS KIT "ARGENTINA"



775.08.190.000
XC-W/EXC 12-13

SIX DAYS GRAPHICS KIT "FINLAND"



787.08.990.000
XC-W/EXC 12-13

SIX DAYS GRAPHICS KIT "GERMANY"



UPP.16.08.020
125/150 SX 16-17
SX-F/XC-F 16-17
250/300 SX/XC 16-17

UPP.15.08.019
XC-W/EXC 13-16

UPP.15.08.020
SX-F/XC-F 13-15
SX/XC 2 STROKE 13-16
125/150 SX 13-15

KURT CASELLI FOUNDATION GRAPHICS

Ride like Caselli with these special edition Kurt Caselli Foundation graphics. A portion of all proceeds will be donated to the Kurt Caselli Foundation.



775.08.190.400
XC-W/EXC 12-13

FACTORY ENDURO GRAPHICS KIT



777.08.990.200
SX/XC 13-15

FACTORY GRAPHICS KIT



503.08.199.000
SX/XC 98-06
XC-W/EXC 98-07

UNIVERSAL FACTORY GRAPHICS KIT

Optical tuning for older KTM models! With their transparent backing, which has a different outline for each model year, you can trim the graphics kit to fit your bike precisely.



773.01.994.050

FORK PROTECTION STICKER SET
For use on the closed fork protector.



790.01.994.050

SX/XC 15-17
XC-W/EXC-F 16-17

FORK PROTECTION STICKER SET
Can be used on the open fork protector.



U691.3121 1" HIGH

U691.3122 1" HIGH

U691.3123 1.6" HIGH

U691.3124 1.6" HIGH

KTM STICKER

KTM sticker made from a special, reflective material. Shines as soon as it is illuminated by a headlight.



777.02.990.000

HANDGUARD STICKER SET

For use with handguards 777.02.079.000/04/28/30, 777.02.179.000/04/EB/28/30 and 765.02.979.000/04/28/30.



781.08.999.000

125/150 SX/XC -15
250/300 SX/XC -16
SX-F/XC-F -15
XC-W/EXC-F -16

RADIATOR LOUVER STICKERS



794.08.988.000/28

794.08.988.000/30

125/150 SX/XC 16-17
250/300 SX/XC 17
SX-F/XC-F 16-17

NUMBER PLATE BACKGROUNDS

3 pieces.



NEW!

796.08.988.000/28

796.08.988.000/30

796.08.988.000/38

796.08.988.000/67

796.08.988.000/80

125/150 SX/XC 16-17
250/300 SX/XC 17
SX-F/XC-F 16-17
XC-W/EXC-F 17

NUMBER PLATE BACKGROUNDS

4 pieces.



796.08.978.000

STICKER SHEET KIT

KTM stickers, made from robust material to stick on your bike, car, trailer, etc. Contains 5 sheets.



322.100 NR. 0

322.101 NR. 1

322.102 NR. 2

322.103 NR. 3

322.104 NR. 4

322.105 NR. 5

322.106 NR. 6

322.107 NR. 7

322.108 NR. 8

322.109 NR. 9

WHITE NUMBERS

5" tall, 3 pieces each.

322.200 NR. 0

322.201 NR. 1

322.202 NR. 2

322.203 NR. 3

322.204 NR. 4

322.205 NR. 5

322.206 NR. 6

322.207 NR. 7

322.208 NR. 8

322.209 NR. 9

BLACK NUMBERS

5" tall, 3 pieces each.



787.08.988.000/28

787.08.988.000/30

787.08.988.000/38

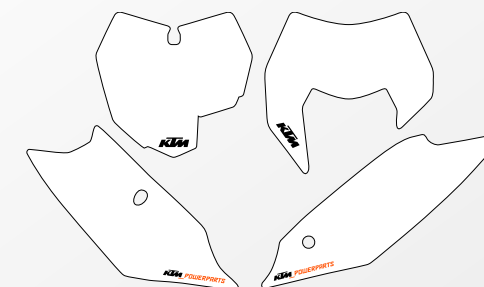
787.08.988.000/67

787.08.988.000/80

125/150 SX/XC 13-15
250/300 SX/XC 13-16
SX-F/XC-F 13-15
XC-W/EXC-F 14-16

NUMBER PLATE BACKGROUNDS

4 pieces.



772.08.088.000/20

772.08.088.000/30

772.08.088.000/38

772.08.088.000/67

772.08.088.000/80

SX/XC 11-12
XC-W/EXC 12-13

NUMBER PLATE BACKGROUNDS

4 pieces.





NEW!

794.07.978.000

SEAT POCKET
Recommended for storing your timecard during races. Stick it directly to the seat with grip glue.



UPP.16.07.020

125/150 SX/XC	16-17
250/300 SX/XC	17
SX-F/XC-F	16-17
XC-W/EXC-F	17

GRIPPER SEAT COVER WITH RIBS



794.07.940.300

125/150 SX/XC	16-17
250/300 SX/XC	17
SX-F/XC-F	16-17
XC-W/EXC-F	17

FACTORY SEAT "WAVE"
This seat provides great freedom of movement, but still offers a perfect hold. The "wave surface" acts as a step even though it isn't one. Standard height. Ridges slightly higher than the standard seat.



USED BY OUR **FACTORY TEAM**

792.07.940.050

125/150 SX/XC	16-17
250/300 SX/XC	17
SX-F/XC-F	16-17
XC-W/EXC-F	17

FACTORY SEAT COVER
This seat cover with transversely stitched ribs ensures maximum support with unrestricted freedom of movement thanks to its special design. For standard height seats.





794.07.940.000

125/150 SX/XC	16-17
250/300 SX/XC	17
SX-F/XC-F	16-17
XC-W/EXC-F	17

HIGH SEAT

Specially designed for riders over 5'10" tall.
Approx. 20 mm higher than the standard seat.

794.07.940.100

125/150 SX/XC	16-17
250/300 SX/XC	17
SX-F/XC-F	16-17
XC-W/EXC-F	17

EXTRA HIGH SEAT

Specially designed for riders over 6'2" tall.
Approx. 35 mm higher than the standard seat.

794.07.940.200

125/150 SX/XC	16-17
250/300 SX/XC	17
SX-F/XC-F	16-17
XC-W/EXC-F	17

LOW SEAT

Provides shorter riders with optimum control of the motorcycle in difficult terrain. Approx. 15 mm lower than the standard seat.

794.07.940.400

125/150 SX/XC	16-17
250/300 SX/XC	17
SX-F/XC-F	16-17
XC-W/EXC-F	17

STEPUP SEAT

The factory riders seat: Thanks to the special step, there's no slipping backwards when you open up the throttle either. Standard height.

794.07.940.500

125/150 SX/XC	16-17
250/300 SX/XC	17
SX-F/XC-F	16-17
XC-W/EXC-F	17

SOFT SEAT

Particularly elastic foam for extra comfort. Standard height.



780.07.240.100

SX	07-10
XC	08-10
XC-W/EXC	08-11



772.07.940.800

125/150 SX/XC	11-15
250/300 SX/XC	11-16
SX-F/XC-F	11-15
XC-W/EXC	12-16

STEPUP SEAT

The factory riders seat: Thanks to the special step, there's no slipping backwards when you open up the throttle. Standard height.

773.07.040.100

SX	13-15
----	-------



772.07.940.400

125/150 SX/XC	11-15
250/300 SX/XC	11-16
SX-F/XC-F	11-15
XC-W/EXC	12-16

HIGH SEAT

Specially designed for riders over 5'10" tall. Approx. 20 mm higher than the standard seat.

781.07.940.000

125/150 SX/XC	11-15
250/300 SX/XC	11-16
SX-F/XC-F	11-15
XC-W/EXC	12-16

EXTRA HIGH SEAT

Specially designed for riders over 6'2" tall. Approx. 35 mm higher than the standard seat.

773.07.040.200

SX	07-10
EXC	08-11

772.07.940.600

125/150 SX/XC	11-15
250/300 SX/XC	11-16
SX-F/XC-F	11-15
XC-W/EXC	12-16

LOW SEAT

Provides shorter riders with optimum control of the motorcycle in difficult terrain. Approx. 15 mm lower than the standard seat.

772.07.940.700

125/150 SX/XC	11-15
250/300 SX/XC	11-16
SX-F/XC-F	11-15
XC-W/EXC	12-16

SOFT SEAT

Particularly elastic foam for extra comfort. Standard height.



772.07.940.400/30

125/150 SX/XC	11-15
250/300 SX/XC	11-16
SX-F/XC-F	11-15
XC-W/EXC	12-16

SEAT "X"

Extremely robust, waterproof seat with different anti-slip surfaces. Made from a single piece (no separate seat cover); does not swell up, even during high-pressure cleaning. Elastic foam core for maximum comfort.

777.07.940.050

125/150 SX/XC	11-15
250/300 SX/XC	11-16
SX-F/XC-F	11-15
XC-W/EXC	12-16



FACTORY SEAT COVER

This is the seat cover of choice for many of our factory riders. Perfect for all types of riding. For standard height seats.

772.07.940.900

125/150 SX/XC	11-15
250/300 SX/XC	11-16
SX-F/XC-F	11-15
XC-W/EXC	12-16



FACTORY SEAT "WAVE"

This seat provides great freedom of movement, but still offers a perfect hold. The "wave surface" acts as a step even though it isn't one. Standard height.

777.07.040.100

125/150 SX/XC	11-15
250/300 SX/XC	11-16
SX-F/XC-F	11-15
XC-W/EXC	12-16



FACTORY SEAT

With its blue cover, this seat suits the current factory-style graphics kits. Standard height.

UPP.15.07.010

125/150 SX/XC	11-15
250/300 SX/XC	11-16
SX-F/XC-F	11-15
XC-W/EXC	12-16



COMFORT SEAT BY SEAT CONCEPTS

New, wider seat and improved foam density helps keep riders comfortable when spending extended time in the saddle.

789.07.940.050

125/150 SX/XC	11-15
250/300 SX/XC	11-16
SX-F/XC-F	11-15
XC-W/EXC	12-16



FACTORY SEAT COVER

This seat cover with transversely stitched ribs ensures maximum support with unrestricted freedom of movement thanks to its special design. For standard height seats.



USED BY OUR
FACTORY TEAM

790.03.940.044

125/150 SX/XC	16-17
250/300 SX/XC	17
SX-F/XC-F	16-17
XC-W/EXC-F	17

TITANIUM FOOTPEGS

41% lighter with the same step area as the standard footpegs. These titanium footpegs were developed to the specifications of our KTM factory riders. Use of the special titanium alloy also allows wear to be reduced to a minimum. When installed on XC-W / EXC-F models, the titanium footpeg sits 6 mm lower than the production footpegs.



780.03.940.244

125/150 SX/XC	-15
250/300 SX/XC	-16
SX-F/XC-F	-15
XC-W/EXC	-16

PIVOT PEGZ

Ingenious: Footpegs that move with you when you shift your weight. Developed and tested by KTM professional riders. Ideal for all types of riding and racing. The benefits:

- Spring-mounted, 20° rotational movement possible towards front and rear
- More control and grip in the corners thanks to the maneuverability
- Large tread surface area of 60 mm
- Simpler and quicker weight shifting
- Simpler gear changing and braking
- Permanent contact between boot and footpeg: extends the service life of your boots!

Replacement parts available: Spring Kit 780.03.940.020, and Overhaul Kit 780.03.940.030



772.03.940.000

125/150 SX	-15
250/300 SX/XC/XC-W	-16
SX-F/XC-F	-15
XCF-W/EXC	-16

TITANIUM FOOTPEGS

33% lighter, despite increased tread surface 90 mm x 55 mm (compared to the standard footpegs 82 mm x 45 mm). These titanium footpegs have been developed to the specifications of our KTM factory riders. Use of the special titanium alloy provides good durability with minimal wear.



PLANNING AN EXTENDED ENDURO TOUR OR AN ENDURANCE RACE?

CAN'T BE BOTHERED WITH CONSTANTLY SEARCHING FOR FILLING STATIONS?

Sometimes you simply need more fuel on board. Best of all: Despite the larger size, the slim lines are retained and therefore the customary full freedom of movement.

NOTE: CLOSED COURSE / COMPETITION USE ONLY!

When mounting any KTM PowerParts fuel tank to XCF-W or EXC models from 2012-2016 the following parts will be needed to mount the fuel pump.

1 x 781.07.088.014 fuel pump nut M12

1 x 781.07.088.017 fuel connection M8

4 x 00.17.060.253 Eject PT screw K60 x 25 - Z SW = "6"

1 x 583.35.099.000 hose clamp GEMI 10 - 16

551.07.913.444/99

125/150 SX/XC 11-15

250/300 SX/XC 11-16

XC-W (TWO-STROKE) 12-16

450 SX-F 11-12

11 L TANK

Supplied with filler cap, but without fuel tap.

CLOSED COURSE/COMPETITION USE ONLY!



781.07.913.444/99

250/350 SX-F/XC-F 11-15

450 SX-F/XC-F 13-15

XCF-W/EXC 12-16

11 L TANK

Supplied with filler cap, but without fuel pump. Fuel pump

781.07.088.000 must be used.

CLOSED COURSE/COMPETITION USE ONLY!

NEW!

792.07.913.044/99

SX-F 16-17

8.5 L TANK

Delivered with fuel tank cap, but the fuel pump is not included.

CLOSED COURSE/COMPETITION USE ONLY!



NEW!

556.07.013.033/99

125 SX 16-17

250 SX 17

XC-W (TWO-STROKE) 17

10 L TANK

Fuel hose 556.07.016.000 is also needed for installation on SX models.

CLOSED COURSE/COMPETITION USE ONLY!



781.07.913.544/99

SX-F/XC-F 13-15

XCF-W/EXC 12-16

19 L TANK

When fitting to SX-F models as of MY 2013 and EXC models as of MY 2014,

airbox part right (772.06.004.000/04/28/30 or 772.06.004.100/04/28/30)

and airbox cover (772.06.003.000/04/28/30) are also required. Supplied with

filler cap, but without fuel tap.

CLOSED COURSE/COMPETITION USE ONLY!



551.07.913.044/04

SX/XC (TWO-STROKE) 11-12

450 SX-F 11-12

XC-W (TWO-STROKE) 12

781.07.913.044/04

EXC FOUR-STROKE 12-13

551.07.913.144/04

125/150 SX 13-15

250/300 SX/XC 13-16

XC-W (TWO-STROKE) 14-16

781.07.913.344/04

SX-F/XC-F 13-15

XCF-W/EXC 14-16

781.07.913.144/04

250/350 SX-F 11-12

13 L TANK

When mounting on SX models with Pro Lever linking,

the right filter box cover 772.06.004.000/04/28/30

is also required. Comes without a filler cap and fuel pump.

CLOSED COURSE/COMPETITION USE ONLY!



781.07.988.017

350/450/500 XCF-W/EXC 12-16

777.07.988.017

SX-F/XC-F 13-16

FACTORY FUEL PUMP CONNECTION

The factory fuel pump connection – also used by

KTM factory riders – allows the fuel hose to be routed

closer along the engine, thereby preventing the fuel hose

from being pulled off unintentionally during offroad use.



781.07.990.100

3/4" VERSION

FUEL FILTER

Easy and safe: Filter fits directly in the tank opening. This means that no dirt enters

the fuel tank or the injection system during refueling. Fits on all 3/4" filler caps.



790.07.913.044

SX-F/XC-F 13-17

EXC (FOUR-STROKE) 12-17

FUEL CONNECTION

The fuel connection machined from plastic and aluminum is very safe due to its

clever design. After joining with the fuel coupler, the coupler is secured by simply

twisting the connector so that undesired opening is eliminated.



772.31.997.000/04

VENT HOSE

Fuel-proof for tank and carburetor venting, approx. 3 m. Should only

be used for venting purposes and not as a connection between tank

and carburetor.



U690.8817

SX/XC/XC-W/EXC 11-15

SELF ADHESIVE TANK SHIELD

Used by the KTM Factory Teams, this self adhesive tank shield

reflects engine heat away from the fuel tank. This reduces the

chance for vapor lock and restores power.



503.12.955.044 -50 MM
200 XC-W 08-16

551.12.955.044 -50 MM
250/300 XC-W 08
250/300 XC-W 10-15
250 XCF-W 08
250 XCF-W 10-15
250 XCF-W/EXC 12-16

551.12.955.144 -50 MM
250/300 XC-W 09
250 XCF-W/EXC 09

780.12.955.044 -50 MM
400/450/530 XC-W/EXC 08-11
450/500 XC-W/EXC 12-16

LOW SUSPENSION KIT

The low suspension kits specially developed by KTM in collaboration with WP Suspension are the perfect compromise between maximum chassis performance and minimum possible seat height. Just like the standard parts, the components used here are manufactured from the highest quality materials and have been specially tuned for offroad use in intensive endurance tests. To ensure best possible function of the suspension kits, we only recommend use with a rider weight up to 155 lbs.



NEW!

796.12.955.044 -20 MM
XC-W/EXC-F 17

796.12.955.544 -50 MM
XC-W/EXC-F 17

LOW SUSPENSION KIT

The low suspension kits specially developed by KTM in collaboration with WP Suspension are the perfect compromise between maximum chassis performance and minimum possible seat height. Just like the standard parts, the components used here are manufactured from the highest quality materials and have been specially tuned for offroad use in intensive endurance tests. To ensure best possible function of the suspension kits, we only recommend use with a rider weight of up to 175 lbs.

NEW!

794.01.905.000
XC-W/EXC-F 17

PRE-LOAD ADJUSTER SET

Tool-free external fork pre-load adjustment to +3 mm and +6 mm



790.04.905.000
125/150 SX/XC 16-17
250/300 SX/XC 17
SX-F/XC-F 16-17

772.04.905.000
125/150 SX/XC 11-15
250/300 SX/XC 11-16
SX-F/XC-F 11-15
XCF-W/EXC 12-16

780.04.905.000
SX/XC 08-10
450 SX-F 07
XC-W/EXC 08-11

PRE-LOAD ADJUSTER REAR SHOCK

Quick, precise chassis adjustment and improved appearance with the pre-load adjuster for the shock absorber.

The main benefits:

- Quick pre-load adjustment
- Use of the entire thread length on the shock absorber
- Very simple to use
- Light weight
- Dust-resistant
- Mechanical drive mechanism

*Shock must be disassembled for installation



4860.0074.S9
XC-W/EXC 07-15

PRE-LOAD ADJUSTER SET

Allows external adjustments of the spring pre-load.



NEW!

796.04.905.000
XC-W/EXC-F 17

PRE-LOAD ADJUSTER REAR SHOCK

Quick, precise chassis adjustment and improved appearance with the pre-load adjuster for the shock absorber.

The main benefits:

- Quick pre-load adjustment
- Use of the entire thread length on the shock absorber
- Very simple to use
- Light weight
- Dust-resistant
- Mechanical drive mechanism

*Shock must be disassembled for installation



781.01.900.100

CLOSED CARTRIDGE FORKS / OPEN CHAMBER / 4CS

BLEEDER VALVE SET

Bleeder valves designed especially for WP Suspension forks. A quick press of the finger and the fork is bled.

*Not compatible with fork pre-load adjusters (794.01.905.000)



// RIDE HARDER

WP offers a cone valve fork for all KTM SX, XC, XC-W and EXC models. While the setting for all current forks have been a combination of comfort, damping and durability, the WP cone valve fork utilizes some of these characteristics to offer the following benefits:

- WP Cone Valve can always open further which reduces harshness
- More comfort when using harder set-ups
- The cone valve prevents any loss of damping from bent shims
- No sealing surface, so minimum drop of pressure after valve opens

WP Cone Valve Fork



WP TRAX Shock



WP-TRAX is a very compact, mechanical system that is integrated into the bottom section of the shock absorber. WP has developed the inventive WP-TRAX system in close cooperation with MX and Off-Road racing champions. It is available as PDS shock for XC-W and EXC models, as well as for the linkage system for SX and XC models.

The benefits of the TRAX system are:

- You feel more grip and traction of the rear wheel, you accelerate faster
- Your bike runs higher in the stroke over multiple bumps (no "packing down")

HOW TO ORDER

These parts are available only directly via the WP Authorized Center Network. To find the right article number for your bike, visit the suspension configurator at www.wp-group.com or directly search for your Authorized Center at www.wp-group.com/dealer

WP Bladder Kit

The WP Bladder Kit for the standard WP SX and XC Link Shock, for model year 2016 and newer, converts the piston-style reservoir into a bladder and improves the performance by:

- Resisting fading
- Decreasing moving parts and friction
- Improving and smoothening the ride



GET IN FRONT





777.09.901.044/30 26 MM (22 MM)
1.6 x 21"

FACTORY FRONT WHEEL

Exclusively developed for KTM PowerParts with input from our Factory Racing Teams

- 36 spoke design with silver anodized aluminum nipples
- Black anodized Excel rim
- Orange anodized KITE hub, machined from solid aluminum

When mounting on models with 22 mm axle diameter, the spacers from your original wheel must be used.

777.10.901.044/30 20 MM (25 MM)
2.15 x 19"

FACTORY REAR WHEEL

Exclusively developed for KTM PowerParts with input from our Factory Racing Teams

- 36 spoke design with silver anodized aluminum nipples
- Black anodized Excel rim
- Orange anodized KITE hub, machined from solid aluminum

When mounting on SX models from 2013 onwards, the spacers from your original wheel must be used due to the larger axle diameter.





790.14.950.044
EXC 10-17

BRACKET SENSOR MAGNET

To ensure the sensor magnet is in the correct location even after a change from Enduro to Supermoto wheels. Sensor magnet 582.14.050.052 is required.

546.10.459.000

RUBBER DAMPING BLOCK

For 17" rear wheels with rear sprocket carrier. Sold individually.



583.10.050.044

SPROCKET SUPPORT

For 17" rear wheels.



812.09.201.044/30 26 MM
3,5 x 17"

SM FRONT WHEEL TUBELESS

CLOSED COURSE/COMPETITION USE ONLY!

812.10.201.044/30 25 MM
4,25 x 17"

SM REAR WHEEL TUBELESS

A sprocket support and 6 rubber damping blocks are required for fitting. CLOSED COURSE/COMPETITION USE ONLY!



NEW!

261.09.001.044/30 26 MM
3,5 x 16,5"

FRONT WHEEL

CLOSED COURSE/COMPETITION USE ONLY!



NEW!

261.10.001.044/30 20 MM
5 x 17"

REAR WHEEL

CLOSED COURSE/COMPETITION USE ONLY!



611.09.099.000 17" 
 611.09.099.000/20 17" 



RIM STICKER SET
 Pre-cut sticker, suitable for front and rear rim.

U695.1087



HUB DECAL KIT
 4 pieces 37 x 31 mm, 4 pieces 48 x 40 mm.

SXS.03.540.400
 26 MM > 20 MM



AXLE REDUCTION KIT
 Together with axle 503.09.081.200 and nut 503.09.082.100, this kit allows forks with a diameter of 26 mm to be fitted to wheels with an axle diameter of 20 mm.

790.09.981.060/04
 SX/XC 15-17
 XC-W/EXC-F 17



FRONT AXLE PULLER
 Simplifies removal of the front wheel.
 For all front axles with a diameter of 22 mm.

780.09.099.000
 18"/21"; 19"/21"



RIM STICKER SET
 Orange, pre-cut sticker, suitable for front and rear rim.

781.09.999.000
 18"/21"; 19"/21"



RIM STICKER SET
 Pre-cut sticker, suitable for front and rear rim.

548.09.081.060
 SX/XC 07-14
 XC-W/EXC 07-15



FRONT AXLE PULLER
 Simplifies removal of the front wheel.
 For all front axles with a 26 mm diameter.

777.10.976.150/04



VALVE CAP SET
 Orange anodized valve caps with built in valve stem puller.

777.10.976.050/04



VALVE CAP SET
 Orange anodized valve caps with built in valve stem puller.

VALVE CAP SET



- 584.10.051.038/04 T38
- 584.10.051.040/04 T40
- 584.10.051.042/04 T42
- 584.10.051.044/04 T44
- 584.10.051.046/04 T46
- 584.10.051.048/04 T48
- 584.10.051.049/04 T49
- 584.10.051.050/04 T50
- 584.10.051.051/04 T51
- 584.10.051.052/04 T52



ORANGE 2K REAR SPROCKET

If you're looking for the ultimate in quality and performance, this sprocket is the one for you!

- High-strength steel teeth, provide a long service life
- Aluminum inner ring, to reduce unsprung weight
- Joined together permanently with high-strength rivets
- At least three times longer service life than other aluminum rear sprockets
- 50% lighter than a conventional steel rear sprockets

2K sprockets are exclusively produced for KTM by Supersprox. This product is protected under the following patents in Europe and USA. EU patent # EP1573234. US Patent # 7.481.729. Patent owner supersprox a.s.

- 590.10.051.042/04 T42
- 590.10.051.045/04 T45
- 590.10.051.048/04 T48
- 590.10.051.049/04 T49
- 590.10.051.050/04 T50
- 590.10.051.051/04 T51
- 590.10.051.052/04 T52

ORANGE REAR SPROCKET

This orange anodized rear sprocket is a true classic within the PowerParts product lineup. Benefits include:

- Manufactured from high-strength 7075-T6 aluminum, the strongest aluminum in the world
- Originally developed for the aerospace industry and then adopted by the best rear sprocket manufacturers
- Chain runs accuracy of 0.002 mm
- Free from vibration - therefore the highest power transmission efficiency
- No small rocks or dirt particles can become stuck under the chain, thanks to angled recesses between the teeth
- 7% lighter with the same strength - hence greater acceleration and improved braking
- All these properties mean slower wear and extreme durability
- Orange anodized with a permanent, organic and environmentally friendly pigment

- 582.10.951.042 T42
- 582.10.951.045 T45
- 582.10.951.048 T48
- 582.10.951.050 T50
- 582.10.951.052 T52



STEEL SPROCKET

For longer trips, we recommend this extremely low-wear, QStE 460 steel sprocket.

- U695.1068 T44
- U695.1069 T48
- U690.6815 T49
- U695.1070 T50
- U690.6816 T51
- U695.1071 T52



RENTHAL SPROCKET

Made exclusively for KTM by Renthal, these orange anodized rear sprockets are used by the KTM Race Teams. Lightweight, durable and provides great performance.

DO YOU KNOW ABOUT THE DIFFERENCES AND BENEFITS OF A Z-RING OR X-RING CHAIN, COMPARED TO AN O-RING CHAIN?

- The Z-ring or X-ring has 4 contact points in contrast to 2 contact points with the O-ring version
- This means higher flexibility and better running characteristics for the Z-ring or X-ring chain
- The spring effect of the Z-ring or X-ring guarantees consistent and permanent lubrication
- This means a significantly longer service life for the Z-ring or X-ring chain
- The Z-ring or X-ring provides a better seal against penetration by water and dirt

503.10.800.118/04 ■

5/8 x 1/4

520 Z-RING CHAIN

780.10.167.118 ■

5/8 X 1/4

520 X-RING CHAIN

503.10.165.118 ■

503.10.165.118/04 ■

5/8 x 1/4

520 MX CHAIN



USED BY OUR
FACTORY TEAM



781.04.970.000/04

SX/XC 07-17
XC-W/EXC 08-17

CHAIN GUIDE

The T.M. Designworks chain guide, as used by the KTM factory team:

- CNC-machined from Teflon
 - Extremely durable, due to a replaceable chain running surface
 - Specially designed for the challenges of offroad use
- Pay attention to the clearance when used in combination with a 2K rear sprocket.
The chain guide may need to be adapted accordingly.
Replacement wear pad available 781.04.970.010



781.04.070.100/04

SX/XC 07-17
XC-W/EXC 08-17

CHAIN GUIDE

773.04.066.000/04

SX 07-10
XC 08-10
XC-W/EXC 08-11

772.04.066.100/04

SX/XC (FOUR STROKE) 11
SX/XC 12-17

CHAIN SLIDING PROTECTION

Offered in an orange factory look.



515.04.066.000/04

SX (TWO-STROKE) 11
XC-W/EXC 12-17

CHAIN SLIDING PROTECTION PDS

773.03.053.000/04

SX 07-10
XC 08-10
XC-W/EXC 08-11

772.03.053.000/04

125/150 SX 11-15
250/300 SX/XC 11-16
SX-F/XC-F 11-15
XC-F/EXC 12-16

790.03.053.000/04

125/150 SX/XC 16-17
250/300 SX/XC 17
SX-F/XC-F 16-17
XC-W/EXC-F 17

CHAIN SLIDING PIECE BELOW

Offered in an orange factory look.



01
02
03
04
05
06
07
08
09
10
11
12
13
14
15
16
17
18
19
20

573.13.001.000
SUPERMOTO

RADIAL HAND BRAKE CYLINDER

The radial hand brake cylinder with 16 mm piston enables better leverage than conventional brake cylinders. The benefit: Significantly less hand strength required for the same amount of braking force. Parts required for mounting: Brake fluid reservoir 545.13.030.044 and the associated retaining bracket 573.13.001.050.



781.13.900.000

- | | |
|-----------------------|-------|
| 250/300 SX/XC/XC-W | 04-17 |
| 250 SX-F/XC-F | 06-12 |
| 250 XCF-W/EXC | 07-17 |
| 350 XCF-W/EXC | 13-17 |
| 400/450/500 XCF-W/EXC | 08-17 |

LEFT HAND BRAKE KIT

For use with the automatic clutch. Allows braking of the rear wheel with the left hand, hence providing additional control in critical situations (ex. steep downhill).



594.13.001.000/04

SUPERMOTO

CNC MACHINED HANDBRAKE CYLINDER

The radial hand brake cylinder with 12 mm piston enables better leverage than conventional brake cylinders and is designed for offroad and supermoto use. CNC-machined from solid material and weighing in at only 305 g, it is extremely compact and light. The short lever can be easily adjusted and delivers an extraordinarily precise feeling when applying the brakes. Ideal for use in combination with the 4-piston brake caliper 584.13.015.644/04 or the 6-piston brake caliper 594.13.015.044/04.



584.13.015.644/04

SX/XC/XC-W

4-PISTON BRAKE CALIPER

KTM brake calipers are distinguished by the following features:

- CNC-machined from high-strength solid aluminum
 - Chrome-plated pad guide pins on the brake caliper
- The benefits:
- Reduced brake pad canting, hence no uneven wear
 - Constant braking feel, irrespective of brake pad wear or temperature
 - No vibration from the brake

Fitting possible on SX/EXC models without adapter, with the original hand pump and brake hose. Can only be fitted with a 17" or 16.5" front wheel. 310 mm brake disc 586.09.060.000 required.



594.13.015.044/04

SX/XC/XC-W

6-PISTON BRAKE CALIPER

KTM brake calipers are distinguished by the following features:

- CNC-machined from high-strength solid aluminum
 - Chrome-plated pad guide pins on the brake caliper
- The benefits:
- Reduced brake pad canting, hence no uneven wear
 - Constant braking feel, irrespective of brake pad wear or temperature
 - No vibration from the brake

We recommend use of hand pump 587.13.001.100 and brake hose 594.13.011.000 (SX) or 800.13.011.000 (EXC). Can only be fitted with a 17" or 16.5" front wheel. 310 mm brake disc 586.09.060.000 required.



SXS.09.125.512

SX/XC/XC-W 09-17

SXS FRONT BRAKE CALIPER

The SXS front brake caliper is manufactured from high-strength aluminum, providing more braking power without adding any additional weight. The increased stiffness of the brake caliper results in a more precise pressure point and improved brake power.



SXS.07.125.712

SX/XC/XC-W 04-17

SXS REAR BRAKE CALIPER

The SXS rear brake caliper is manufactured from high-strength aluminum providing more braking power without adding any additional weight. The increased stiffness of the brake caliper results in a more precise pressure point and improved brake power. When fitting to SX models as of MY 2013, the CNC brake caliper support (777.13.975.010/30) must be used instead of the supplied brake caliper support due to the larger axle diameter.



789.09.960.000 270 MM
SX/XC 09-17
XC-W 10-17

FLAME BRAKE DISC

KTM factory riders brake with Moto Master brake discs: Precise fitting, made from the highest grade steel, they provide extra brake performance and minimum brake pad wear. Brake caliper support 789.13.914.100 is also required for installation.



USED BY OUR FACTORY TEAM
789.10.960.000 220 MM
SX/XC 07-17
XC-W 08-17

FLAME BRAKE DISC

Brake disc is 4.3 mm thick to help eliminate brake fade, and provides a substantially longer service life.



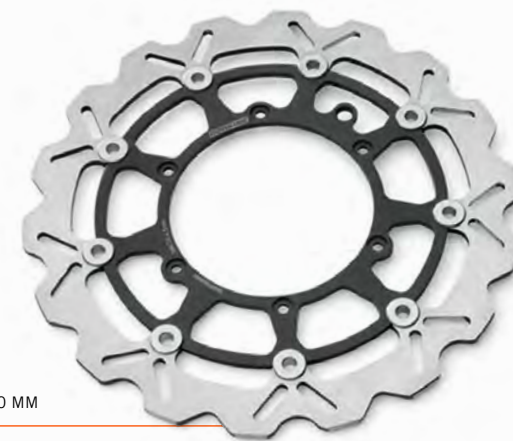
USED BY OUR FACTORY TEAM
781.09.960.000 260 MM
SX/XC/XC-W

FLAME BRAKE DISC

KTM factory riders brake with Moto Master brake discs: Precise fitting, made from the highest grade steel, they ensure maximum deceleration and minimum brake pad wear.



586.09.060.000 310 MM
WAVE BRAKE DISC



583.09.060.000 320 MM
SX/XC/XC-W

BRAKE DISC

Extra-large for extra-high brake power. The low-rust, laser-cut 320 mm brake disc is perfectly suited to supermoto use thanks to the specially designed connection of the outer band with the inner band. Brake caliper support 584.13.014.000 or 770.13.914.000 is also required for fitting with the standard 2-piston Brembo® brake caliper.



781.10.960.000 220 MM
SX/EXC/XC-W

FLAME BRAKE DISC

KTM factory riders brake with Moto Master brake discs: Precise fitting, made from the highest grade steel, they ensure maximum deceleration and minimum brake pad wear.



780.10.960.000 220 MM
SX/XC/XC-W

BRAKE DISC

Full version for muddy track conditions; minimizes brake pad wear.





DO YOU KNOW ABOUT THE VARIOUS PROPERTIES AND OPERATIONAL USES OF DIFFERENT BRAKE PADS?

ORGANIC BRAKE PADS

- Made from a special material mix with a high proportion of organic substances, creating a softer brake pad
- With ceramic underlayer for optimum thermal insulation
- Lower friction coefficient than sintered brake pads, resulting in a less aggressive braking feel
- Beneficial when particularly refined responsiveness is desired for ideal brake application

590.13.930.100 ORGANIC
SX/XC/XC-W/EXC

FRONT BRAKE PADS



590.13.090.100 ORGANIC
SX/XC/XC-W/EXC 98-03

REAR BRAKE PADS



548.13.990.100 ORGANIC
SX/XC/XC-W/EXC 04-17

REAR BRAKE PADS



SINTERED BRAKE PADS

- 100% sintered metals
- Very high coefficient of friction for maximum and enduring braking power
- Low fading tendency when hot
- Strongly effective braking power in the wet as well
- Very hard and therefore extremely long-lasting
- Particularly beneficial in extreme conditions (e.g. sand, gravel, ...)

590.13.930.200 SINTERED
SX/XC/XC-W/EXC

FRONT BRAKE PADS



590.13.090.000 SINTERED
SX/XC/XC-W/EXC 98-03

REAR BRAKE PADS



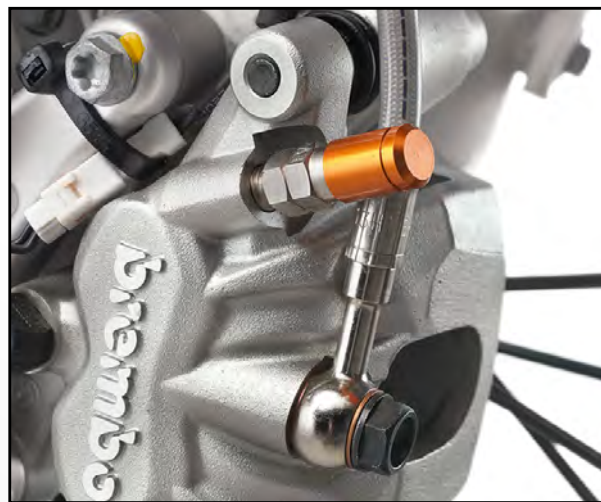
548.13.990.200 SINTERED
SX/XC/XC-W/EXC 04-17

REAR BRAKE PADS



780.13.920.000

SX/XC 09-17
XC-W/EXC 10-17



BRAKE BLEEDER SCREW

Bleeding the brakes or changing the brake fluid is completed in a matter of seconds, even on your own: First replace the original bleeder screw on the brake caliper with this new bleeder screw equipped with a check valve. When changing the brake fluid or bleeding the system, simply release the screw on the check valve by a half turn and pump the brake fluid through the system with the brake lever. The valve prevents air from forcing its way back into the system on releasing the brake lever. Supplied with an anodized dust cap.



770.13.920.100

SX/XC/XC-W/EXC

BANJO BOLT WITH BLEEDER FUNCTION
Same as 780.13.920.000, but for rear brake caliper.



777.13.975.010/30

SX/XC 13-17

CNC BRAKE CALIPER SUPPORT

Lighter and stiffer than the standard brake caliper support. The stiffness has a positive effect on braking power. CNC-machined from the highest grade aluminum and anodized black. Options available: Carbon brake caliper protection 777.13.975.120 and carbon brake disc protection 777.13.975.030.



770.13.914.000

SX/XC 09-17
XC-W/EXC 10-17

BRAKE CALIPER SUPPORT

Required for using the 320 mm brake disc 583.09.060.000 and 2-piston Brembo® brake caliper.

548.12.063.044

SX/XC/XC-W/EXC

REAR BRAKE PEDAL SAFETY WIRE



503.13.082.200

SX/XC/XC-W/EXC 04-17

BRAKE PAD RETAINING PIN

Lost pins are a thing of the past. This pin enables you to quickly change the brake pads.



HIGHLIGHTS



NEW!

556.35.941.044

SX-F/XC-F	16-17
250/300 XC/XC-W	17
EXC-F	17

DIGITAL FAN KIT

Ideal for extreme conditions, this fan ensures more air, better cooling and maximum performance. The digital control allows you to adjust the activation temperature anywhere between 149°F and 203°F, while also continuously displaying current temperature. The fan automatically shuts off 1°F below the activation temperature.

For installation on all models, you will need auxiliary wiring harness 777.11.979.000; Y-distributor 777.11.979.044 can also be installed to add an additional electronic device.

554.35.924.044/04 **NEW!**
250/300 SX/XC 17

504.35.924.044/04
125/150 SX/XC-W 16-17

790.35.924.044/04
250/350 SX-F/XC-F 16-17

794.35.924.044/04
450 SX-F/XC-F 16-17

772.35.924.144
250 SX-F/XC-F 13-15
350 SX-F/XC-F 11-15

789.35.924.044
450 SX-F/XC-F 13-15

ORANGE RADIATOR HOSES

For a higher level of performance and appearance! These reinforced silicon-rubber cooling hoses have been specially developed to withstand extreme pressures and temperatures. The special surface of their rubber compound also improves the flow behavior.



USED BY OUR **FACTORY TEAM**

NEW!

796.35.941.044
EXC-F 17

FAN
Replacement fan kit for your EXC-F



781.35.941.244

200 XC-W 13-16
250/300 XC/XC-W 08-16
XC-F 08-15
XC-W/EXC 08-16

DIGITAL FAN KIT

Indispensable in extreme conditions, this fan provides more air, ensuring better cooling and maximum power. With the digital control unit, you can adjust the activation temperature to suit your needs and read the current temperature at any time. The freely selectable activation temperature lies between 149 °F and 203 °F. The deactivation temperature is adjusted automatically and always lies 1 °F below the selected activation temperature. For installation on XC-W/EXC models up to MY 11 auxiliary wiring harness 777.11.979.000 is needed. For MY 14 and later XC-W/EXC, Y-distributor 777.11.979.010 is required for installation. All XC models require auxiliary wiring harness 777.11.979.000 for installation.



812.35.941.144

XCF-W/EXC (FOUR-STROKE) 08-16

FAN

Specifically suited for extreme conditions: for more air, better cooling and maximum power.



551.35.041.044

200 XC-W 13-16
250/300 XC-W 08-16

FAN

Can only be fitted on 250 EXC MY 08-11 in combination with the e-start kit.

590.35.041.044

EXC (FOUR-STROKE) 01-07

FAN

Specifically suited for extreme conditions: for more air, better cooling and maximum power.



773.35.034.000/04 ■

773.35.034.000/28 □

773.35.034.000/30 ■

125/150 SX	07-15
250/300 SX/XC/XC-W	07-16
SX-F/XC-F	07-15
XC-W/EXC	08-16

RADIATOR LOUVER

Suitable for left and right side.



548.35.980.000

FOAM FOR COOLER

For extremely muddy conditions. Prevents the radiator from becoming clogged with mud and helps prevent the engine from overheating.



781.35.936.100

125/150 SX	07-15
250/300 SX/XC/XC-W	07-16
SX-F/XC-F	07-15
XC-F/EXC	08-16

RADIATOR PROTECTION

Reinforcement bar for radiators. Simple fitting. Installation not possible with larger tanks that take the place of the radiator shrouds.



777.35.936.244

125/150 SX	07-15
250/300 SX/XC/XC-W	07-16
SX-F/XC-F	07-15
XC-F/EXC	08-16

ALUMINUM RADIATOR PROTECTION

Made from high-strength aluminum, it provides maximum protection at the minimum possible weight. Installation not possible with larger tanks that take the place of the radiator shrouds.

NEW!

790.35.134.000/28 □

125/150 SX/XC-W	16-17
250/300 SX/XC	17
SX-F/XC-F	16-17
XC-W/EXC-F	17

RADIATOR LOUVER



720.35.994.000/04

250 SX-F/XC-F	13-15
350 SX-F/XC-F	11-15
250 XCF-W/EXC	14-16
350 XCF-W/EXC	12-16

WATER PUMP COVER PROTECTION

The plastic protector prevents damage to the water pump cover and radiator hose in the area of the hose connection.

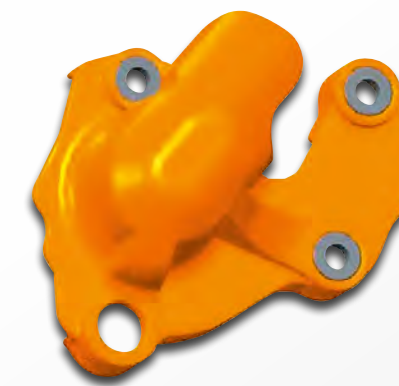


790.35.994.000/EB

250/350 SX-F/XC-F	16-17
250/350 EXC-F	17

WATER PUMP COVER PROTECTION

The plastic protector prevents damage to the water pump cover and radiator hose in the area of the hose connection.



THIS GENERATION OF KTM ALUMINUM SKID PLATES OFFERS THE MOST EFFECTIVE PROTECTION FOR FRAME AND ENGINE:

- Spaced from the frame with rubber padding (125/150 SX from MY 16, 250/300 SX/XC from MY 17, XC-W/EXC-F from MY 17)
- Exceptionally robust rear fastening clamp
- Made of 4 mm-thick, high-tensile, robust aluminum
- Side parts welded from inside and out (as of model year 12)
- Extremely durable and endurance-tested for the toughest offroad use
- Custom design – specifically developed for KTM models
- Highest grade quality workmanship
- Simple and quick assembly



504.03.990.000
125/150 SX 16-17
150 XC-W 17

554.03.990.000 **NEW!**
250/300 SX/XC/XC-W

SKID PLATE

NEW!

504.03.990.544
125 SX 16-17
150 XC-W 17

554.03.990.544
250/300 SX/XC/XC-W 17

SKID PLATE



503.03.090.400
125/144/150 SX/XC 07-10
200 XC-W 08-11

515.03.990.200
125/150 SX/XC 11-15
200 XC-W 12-16

548.03.990.300
250 SX 11-16
250/300 XC-W 12-16

SKID PLATE



503.03.990.200
125/150 SX 11-15
200 XC-W 12-16

SKID PLATE



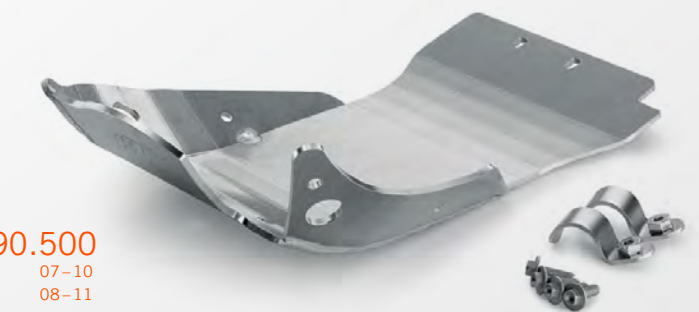
551.03.090.000
250 SX 07-10
250/300 XC-W 04-11

SKID PLATE



551.03.990.200
250 SX/XC 11-16
250/300 XC-W 12-16

SKID PLATE



503.03.090.500
125/150 SX 07-10
200 XC-W 08-11

SKID PLATE

NEVER RIDE WITHOUT ONE! KTM PLASTIC SKID PLATES COMBINE MANY SPECIAL FEATURES:

- Manufactured using state-of-the-art plastic injection moulding technology
- Made from special high-strength plastic
- Revised, extremely tough fastening system
- Developed for use in the toughest offroad terrain
- Maximum protection with the lightest weight possible
- Custom design - specially developed for KTM models
- Simple installation is made possible with the use of a special quick-release mechanism



551.03.190.000
250 SX 07-10
250/300 XC/XC-W 08-11

SKID PLATE WITH QUICK-FASTENER



503.03.190.100
125/150 SX/XC 11-15

548.03.190.100
250 SX 11-16
250/300 XC/XC-W 12-16

SKID PLATE WITH QUICK-FASTENER

DO YOU KNOW ABOUT THE BENEFITS OF THE KTM CASE GUARD?

- Prevents damage to the engine case in the event of the chain breaking
- Helps prevent dirt and mud from packing in between the chain and engine case
- CNC-machined from high-strength aluminum
- Best effective protection for the clutch slave cylinder



548.32.075.344
250 SX 07-10
250/300 XC/XC-W 08-16

CASE GUARD



504.32.975.044
125/150 SX 16-17
150 XC-W 17

554.32.975.044
250/300 SX/XC/XC-W 17

CASE GUARD

NEW!

590.03.990.250



FOAM

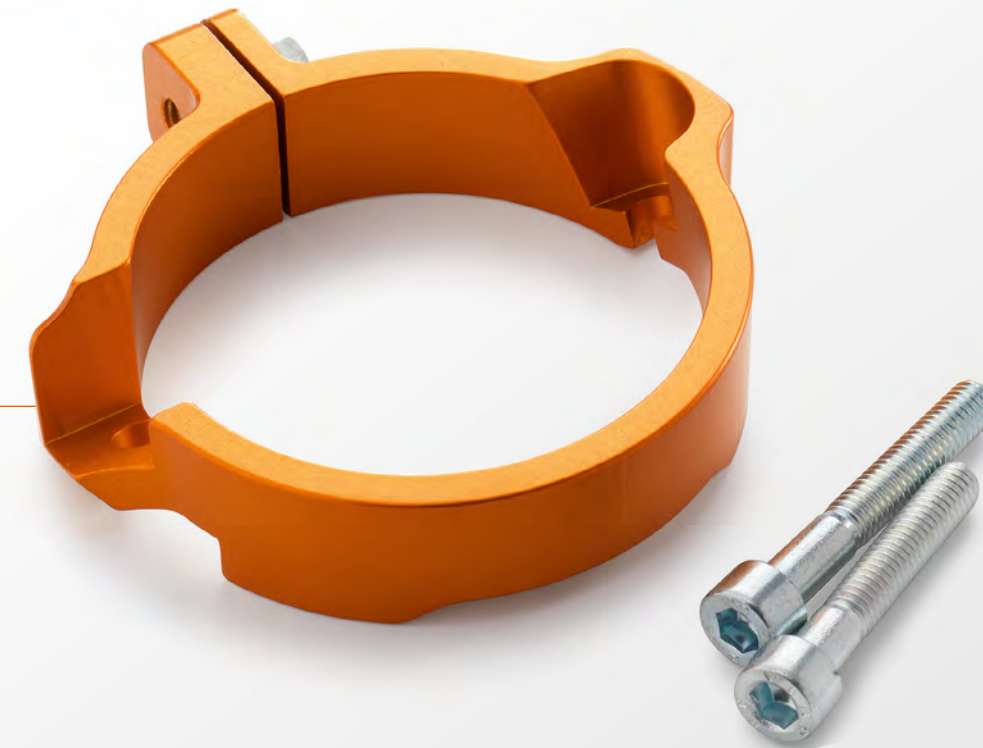
When positioned between engine and skid plate, less dirt can accumulate, allowing for better cooling of the engine.

NEW!

554.37.994.044
250/300 SX/XC/XC-W 17

EXHAUST FLANGE GUARD

A must during extreme riding and racing! This exhaust flange protector is designed to provide added strength to the cylinder flange in the event of an unexpected impact to the pipe.



HIGHLIGHT



114

NEW!

504.03.090.044
150 XC-W 17

554.03.090.044
250/300 XC-W 17

792.03.090.044
250/350 EXC-F 17

796.03.090.044
450/500 EXC-F 17

SKID PLATE

Composite skid plates combine a number of special features:

- Manufactured with ultra-modern two-component injection molding technology
- Made from special high-strength composites
- Rubber inserts around the contact surfaces between the skid plate and frame for improved protection
- Incredibly easy installation by mounting directly to the frame with no brackets
- Developed for use on the most rugged offroad terrain
- Maximum protection with the lightest weight possible

115

KTM PLASTIC SKID PLATES COMBINE MANY SPECIAL FEATURES:

- Manufactured using state-of-the-art plastic injection moulding technology
- Made from special high-strength plastic
- Revised, extremely tough fastening system
- Developed for use in the toughest offroad terrain
- Maximum protection with minimum possible weight
- Custom design - specially developed for KTM models
- Simple installation is made possible with the use of a special quick-release mechanism
- Removable in seconds

774.03.190.100

250 SX-F/XC-F 11-12
250 XCF-W 12-13

775.03.190.000

250 SX-F/XC-F 13-15
350 SX-F 11-15
250 EXC-F/XCF-W 14-16
350 XCF-W/EXC 12-16

781.03.190.100

450 SX-F/XC-F 13-15
450/500 XCF-W/EXC 12-16



SKID PLATE WITH QUICK-FASTENER

780.03.190.100

400/450/530 EXC 08-11

SKID PLATE WITH QUICK-FASTENER



DO YOU KNOW ABOUT THE BENEFITS OF THE KTM CASE GUARD?

- Prevents damage to the engine case in the event of the chain breaking
- Helps prevent dirt and mud from packing in between the chain and engine case
- CNC-machined from high-strength aluminum
- Best possible protection for the clutch slave cylinder

790.32.975.044

250/350 SX-F/XC-F 16-17
250/350 EXC-F 17

794.32.975.044

450 SX-F/XC-F 16-17
450/500 EXC-F 17

CASE GUARD



770.32.075.244

250 SX-F/XC-F 07-12
250 XCF-W 08-13

780.32.075.044

400/450/530 EXC 08-11

772.32.975.044

250 SX-F/XC-F 13-15
350 SX-F/XC-F 11-15

775.32.975.044

250 XCF-W 14-16
350 XCF-W/EXC 12-16

781.32.975.044

450 SX-F 13-15
450/500 XCF-W/EXC 12-16

CASE GUARD



CLUTCH COVER PROTECTION

Not only does it look good but, it also protects your clutch cover from roost and being dented by the brake lever in the event of a minor fall.

775.30.994.000/04

250 SX-F/XC-F 13-15
350 SX-F/XC-F 11-15
350 XCF-W/EXC 12-16

CLUTCH COVER PROTECTION



NEW!

794.30.994.000/EB ■

794.30.994.000/30 ■

450 SX-F/XC-F 16-17
450/500 EXC-F 17

CLUTCH COVER PROTECTION



NEW!

792.30.994.000/EB

250/350 SX-F/XC-F 16-17
350 EXC-F 17

792.30.994.500/EB

250 EXC-F 17

CLUTCH COVER PROTECTION



SXS.07.250.030

250/300 SX 08-12
250/300 XC/XC-W 08-12
300 XC/XC-W 07

SXS.11.350.030

250 SX-F/XC-F 13-15
250 XCF-W 16
350 SX-F/XC-F 11-15
350 XC-W/EXC 12-16

SXS.13.450.030

450 SX-F 13-15
450/500 XC-W/EXC 12-16

CARBON CLUTCH COVER PROTECTION

Optimum protection against roost.



THIS GENERATION OF KTM ALUMINUM SKID PLATES PROVIDES THE MOST EFFECTIVE PROTECTION FOR FRAME AND ENGINE:

- Spaced from the frame with rubber padding (SX-F/XC-F as of model year 16, EXC-F as of model year 17)
- Extremely robust rear fastening clamp
- Made of 4 mm-thick, high-strength, robust aluminum
- Side parts welded from the inside and outside (as of model year 12)
- Extremely durable and endurance tested for the toughest off road use
- Custom design – specifically developed for KTM models
- Highest grade quality workmanship
- Simple and quick assembly

790.03.990.000

250/350 SX-F/XC-F 16-17
250/350 EXC-F 17

794.03.990.000

450 SX-F/XC-F 16-17
450/500 EXC-F 17

SKID PLATE



772.03.990.200

250/350 SX-F/XC-F 11-15
250/350 XCF-W/EXC 12-16

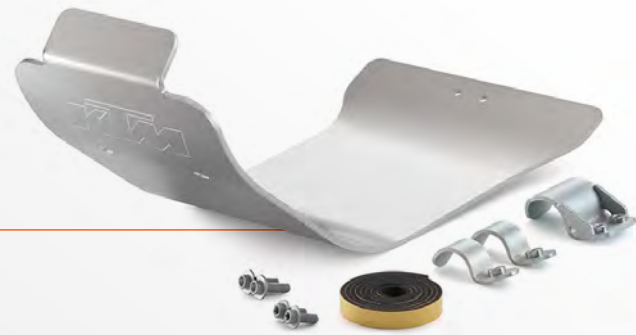
773.03.990.100

450 SX-F 11-12

789.03.990.000

450 SX-F/XC-F 13-15
450/500 XCF-W/EXC 12-16

SKID PLATE



774.03.990.100

250/350 SX-F/XC-F 11-15
250/350 XCF-W/EXC 12-16

781.03.990.100

450 SX-F/XC-F 13-15
450/500 XCF-W/EXC 12-16

SKID PLATE



01
02
03
04
05
06
07
08
09
10
11
12
13
14
15
16
17
18
19
20



THIS GENERATION OF KTM ALUMINUM SKID PLATES PROVIDES THE MOST EFFECTIVE PROTECTION FOR FRAME AND ENGINE:

- Spaced from the frame with rubber pads (SX-F as of model year 16, EXC-F as of model year 17)
- Extremely robust rear fastening clamp
- Made of 4 mm-thick, high-strength, robust aluminum
- Side parts welded from the inside and outside (as of model year 12)
- Extremely durable and endurance tested for the toughest off road use
- Custom design - specifically developed for KTM models
- Highest grade quality workmanship
- Simple and quick assembly

770.03.090.200

250 SX-F/XC-F 07-10
250 XCF-W 08-11

773.03.090.000

450/505 SX-F 07-10

SKID PLATE



590.03.990.250

FOAM

When positioned between engine and skid plate, less dirt can accumulate, allowing for better cooling of the engine.



NEW!

790.03.990.544

250/350 SX-F/XC-F 16-17
250/350 EXC-F 17

794.03.990.544

450 SX-F/XC-F 16-17
450/500 EXC-F 17

SKID PLATE



UPP.15.03.020 ■

250/350 SX-F/XC-F 16-17
250/350 EXC-F 17

UPP.15.03.020.EB ■

250/350 SX-F/XC-F 16-17
250/350 EXC-F 17

UPP.15.03.040 ■

450 SX-F/XC-F 16-17
450 EXC-F 17

UPP.15.03.040.EB ■

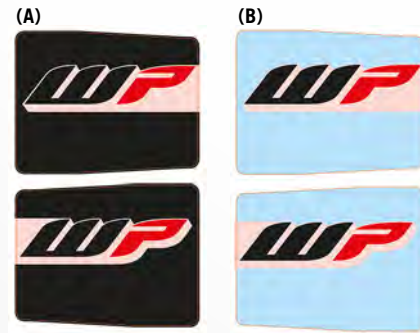
450 SX-F/XC-F 16-17
450 EXC-F 17

FACTORY SKID PLATE

Developed by KTM for precise fit and finish

- Form fitted to frame and cases for minimal weight and maximum protection
- Ultra secure "stay-in-place" dual bracket system for easy installation and removal
- Protects frame and vital engine components
- High Impact, durable and shock resistant
- Quick and easy installation
- Proudly made in the USA





5200.0092
ALL USD FORKS Ø 48 MM (A)

5200.0093
ALL USD FORKS Ø 48 MM (B)

FORK PROTECTION STICKER SET
Extra thick film; protects the outer tubes against roost.

595.01.095.000
ALL USD FORKS Ø 48 MM

595.01.095.100
ALL USD FORKS Ø 43 MM

NEOPRENE FORK COVER
The perfect protection for your fork; for use with the open fork protector.



780.01.095.000
ALL USD FORKS Ø 48 MM

NEOPRENE FORK COVER
The perfect protection for your fork; for use with the closed fork protector.

813.01.994.000/49
FOR 48 MM FORKS

CARBON FORK PROTECTION SET
Optimum protection against roost. Made to fit all 48 mm forks.



595.04.090.050
SX/XC/XC-W/EXC

NEOPRENE PDS PROTECTION
Special protection means less dirt and lengthens the service life of the lower PDS bearing.

U690.8818
EXC

LICENSE PLATE HOLDER
Recommended bracket for mounting the license plate on your street legal EXC. Features multiple bolt patterns to hold plates from any state.



781.04.974.000
SX/XC 07-17
XC-W/EXC 08-17

CHAIN GUIDE BRACKET PROTECTION
Manufactured from high-strength aluminum. Protects the chain guide bracket from major damage. Cannot be used in combination with the T.M. Designworks chain guide.



781.09.945.000 26 MM
SX/XC -14
XC-W/EXC -15

777.09.945.000 22 MM
SX 15-17
EXC/XC-W 16-17

FRONT SLIDE PADS
Protects the fork from damage in the event of a slide.



781.10.945.100
SX/XC/XC-W/EXC 12-17

REAR SLIDE PADS
Protects the swingarm in the event of a slide.



781.04.994.100/30
SX/XC (TWO-STROKE) 11
XC-W/EXC 12-17

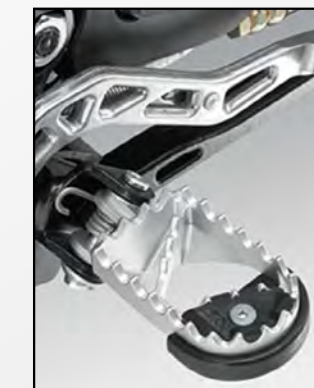
772.04.994.100/30
SX/XC 12-17
SX-F/XC-F 11-17

SWINGARM PROTECTION
Made from plastic, the swingarm protector protects the swingarm from damage. The benefit: An undamaged and visually appealing swingarm definitely has a positive effect on the resale value of your motorcycle. When fitting to 125/150 SX 16-17 and SX-F/XC-F 16-17 brake line guide 765.04.042.000 is required



790.03.944.044
125/150 SX 16-17
250/300 SX/XC 17
SX-F/XC-F 16-17

FOOTPEG SLIDERS
Glass fiber reinforced plastic. Protects the footpegs from damage in the event of a slide. Can be fitted to all motorcycles with footpegs 790.03.041.000 on the right and 790.03.040.000 on the left.



548.03.047.000
125/150 SX -15
250/300 SX/XC -16
SX-F/XC-F -15
XC-W/EXC -16

FOOTPEG SLIDERS
Glass fiber reinforced plastic. Protects the footpegs from damage during a slide. Mountable on all motorcycles with footpegs 590.03.041.250/780.03.041.050 right and 590.03.040.250/780.03.040.050 left.

- 794.03.994.100 ■
 - 794.03.994.000/30 ■
 - 794.03.994.100/EB ■
- | | |
|--------------------|-------|
| 125/150 SX/XC-W | 16-17 |
| 250/300 SX/XC/XC-W | 17 |
| SX-F/XC-F | 16-17 |
| EXC | 17 |

FRAME DECALS
For protecting your frame without altering the slender profile of your bike.



- U690.7867 ■
 - U690.7866 ■
 - U691.3100 ■
 - U691.0061 ■
 - U691.0060 ■
- | | |
|----------|-------|
| SX | 07-10 |
| XC | 08-10 |
| XC-W/EXC | 08-11 |
- | | |
|----------|-------|
| SX/XC | 11-15 |
| XC-W/EXC | 12-16 |

FRAME DECALS
For protecting your frame without altering the slender profile of your bike.



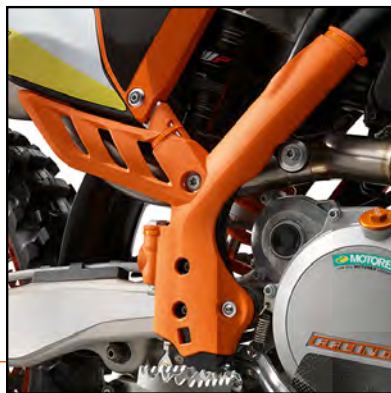
- 790.03.094.000/EB ■

- 790.03.094.000/33 ■
- | | |
|------------|----|
| 125/150 SX | 16 |
| SX-F/XC-F | 16 |

- 772.03.094.000/04 ■

- 772.03.094.000 ■
- | | |
|---------------|-------|
| 125/150 SX/XC | 11-15 |
| 250/300 SX/XC | 11-16 |
| SX-F/XC-F | 11-15 |
| XC-W/EXC | 12-16 |

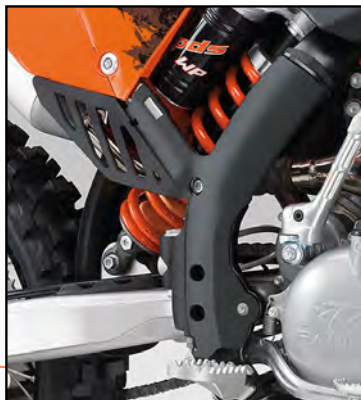
FRAME PROTECTION SET
Reliably prevents damage to the powder coating from dirt, and the rider's boots. Also protects pants and boots from burns on the exhaust side.



- 773.03.094.100/04 ■

- 773.03.094.100 ■
- | | |
|-------------|-------|
| SX | 07-10 |
| XC/XC-W/EXC | 08-11 |

FRAME PROTECTION SET
Reliably prevents damage to the powder coating from dirt, and the rider's boots. Also protects pants and boots from burns on the exhaust side.



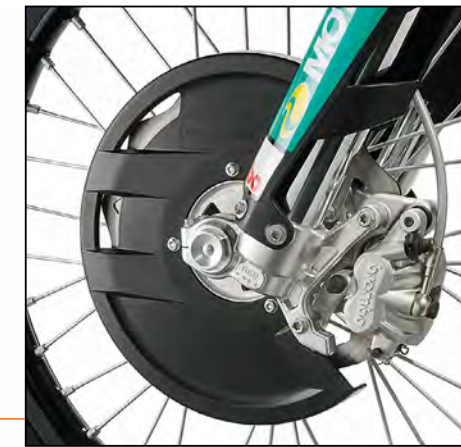
- 780.09.061.100/30

- | | |
|----------|-------|
| SX/XC | 04-14 |
| XC-W/EXC | 04-15 |
- UP TO 260 MM BRAKE DISC

- 790.09.961.000/30

- | | |
|----------|-------|
| SX/XC | 15-17 |
| XC-W/EXC | 16-17 |
- UP TO 260 MM BRAKE DISC

FRONT BRAKE DISC GUARD
Very practical: The intelligent fitting system with a central adapter replaces the spacer sleeve on the wheel axle and allows the tire to be changed, brake to be serviced, etc., without removing the brake cover.



- 777.13.975.120

CARBON BRAKE CALIPER PROTECTION
Optimum protection against roost. Can be fitted on CNC brake caliper supports 777.13.975.010/30, 781.13.975.044, 781.13.975.144, 781.13.975.244 or 789.13.975.044.



- 777.13.975.030

CARBON BRAKE DISC PROTECTOR
Protects the rear brake disc from roost and other solid objects while maintaining minimal weight. Designed to fit on CNC brake caliper support 777.13.975.010/30 or 725.13.975.000/30



- U690.7872

- | | |
|----------|-------|
| SX/XC | 04-12 |
| XC-W/EXC | 04-17 |

- U691.3130

- | | |
|-------|-------|
| SX/XC | 13-17 |
|-------|-------|

REAR BRAKE DISC GUARD
High-quality billet aluminum disc guard with replaceable fin. Helps protect rear brake disc from rocks and debris. Replaces stock brake caliper carrier. Replacement fin: U690.9881



- 781.13.975.244

- | | |
|----------|-------|
| SX/XC | 04-12 |
| XC-W/EXC | 04-17 |

- 789.13.975.044

- | | |
|-------|-------|
| SX/XC | 13-17 |
|-------|-------|

CNC BRAKE CALIPER SUPPORT WITH BRAKE DISC GUARD
The integrated brake disc guard protects the rear brake disc from roost and other solid objects. The brake caliper support is lighter and stiffer than the standard version. The stiffness has a positive effect on such braking properties as braking power and application. CNC-machined from highest grade aluminum and anodized black and orange. Options available: Carbon brake caliper protection available: 777.13.975.120.



- 548.10.961.200/04 ■

- 548.10.961.200/30 ■
- | | |
|----------------|-------|
| SX/XC/XC-W/EXC | 04-17 |
|----------------|-------|

REAR BRAKE DISC GUARD
Protects the rear brake disc from roost and other solid objects. Made of high-strength aluminum.



781.11.994.000
XC-W/EXC 14-16



HEADLAMP GRID
Effective and simple-to-fit headlamp grille made from transparent plastic.

780.11.909.100/30
XC-W/EXC 08-13



HEADLAMP GRID
Made from high quality plastic.

781.08.999.020



TRIPLE CLAMP PROTECTIVE STICKER SET
Extra thick film protects the triple clamp from stone impacts.
For use with factory triple clamps SXS.13.450.460 and SXS.13.450.470 as well as triple clamp 781.01.999.020/04 and 781.01.999.022/04.

770.08.998.000
250/400/450/530 XC-W/EXC 08-11

770.08.998.100 TRANSPARENT
XC-W 200/250/300 11
XC-W 450/530 11
XCF-W 250 11

TANK PAD SET
Protects the fuel tank from scratches.



772.06.917.050/04
125/150 SX -15
250/300 SX/XC/XC-W -16
SX-F/XC-F -15
XCF-W/EXC -16



AIR FILTER RETAINING BUSHING
Small part with a big impact. This threaded air filter retaining pin ensures your filter stays in place during the most extreme conditions.

590.06.021.000
SX/XC 98-10
XC-W/EXC 98-11

772.06.921.100
125/150 SX/XC 11-15
250/300 SX/XC/XC-W 11-16
XCF-W/EXC 12-16

790.06.921.000
125/150 SX/XC-W 16-17
250/300 SX/XC/XC-W 17
SX-F/XC-F 16-17
EXC-F 17

RAIN COVER FOR AIR FILTER
Recommended in extremely wet conditions.



590.06.019.000
SX/XC 98-10
XC-W/EXC 98-11

772.06.920.100
125/150 SX/XC 11-15
250/300 SX/XC/XC-W 11-16
XCF-W/EXC 12-16

790.06.920.000
125/150 SX/XC-W 16-17
250/300 SX/XC/XC-W 17
SX-F/XC-F 16-17
EXC-F 17

DUST COVER FOR AIR FILTER
This large-pore air filter cover acts as an additional protective layer, hence extending the filter service interval. Recommended in extremely dusty conditions.



590.06.922.000
SX/XC 98-15
250/300 SX/XC 98-16
XC-W/EXC 98-16

790.06.922.000
125/150 SX/XC-W 16-17
250/300 SX/XC/XC-W 17
SX-F/XC-F 16-17
EXC-F 17

SAND COVER FOR AIR FILTER
Recommended for use on sandy tracks. Suggested installation together with oiled air filter and dry dust guard 590.06.019.000, 772.06.920.100 or 790.06.920.000.



781.12.978.100 **NEW!**
XC-W/EXC-F 04-17



UNIVERSAL BAG
The robust, waterproof bag can be fitted simply and without additional installation materials. The volume of the bag is approx. 5 l., thereby providing enough space for the most important things on your offroad tour. For use on FREERIDE models, rear rack 720.12.927.044 is required.

620.02.903.150

GPS/PDA BAG LARGE
Keeps documents, maps, navigation and communication equipment (e.g., cellphone) dry and protected against vibration in your field of vision.
- Suitable for all KTM GPS bracket mounts
- Size: 170 x 130 x 35 mm
Required for mounting: bracket 620.02.903.100.



620.02.903.100
SX/XC/XC-W/EXC

BRACKET FOR GPS/PDA BAGS
Only for use on original handlebar mounting.



620.12.092.044
SX/XC/XC-W/EXC

MOUNTING FOR GPS/PDA BAGS
Universal mount for GPS Brackets



01
02
03
04
05
06
07
08
09
10
11
12
13
14
15
16
17
18
19
20



548.02.021.000

GRIP HALF-WAFFLE SOFT

The special half-waffle grip has been developed to meet the demands and preferences of our factory riders, with the clear objectives: comfort AND safety – because no calluses on the palms and secure grip mean less stress when riding. The benefits:

- Ergonomic; contour matched to the shape of the hand for maximum comfort
- Small "half waffle" ribs on the rear for secure grip
- Made from two materials with different grades of hardness
- Available in two versions (soft and medium)
- Three areas for the metal safety wire

548.02.021.100

GRIP HALF-WAFFLE MEDIUM



630.02.021.100

GRIP SET DUAL COMPOUND

The KTM 2K (2K = 2 different materials) grip combines the durability of KTM standard grips and the comfort of the soft KTM grips.

- Harder orange material on the inside and at the grip ends for a long service life
- Softer black material on the outside, where the hand lies on the grip, for increased comfort

630.02.021.200

GRIP SET DUAL COMPOUND

Same as 630.02.021.100, but with open grip ends for closed handguards or bar ends.



781.02.924.000

LOCK-ON GRIP SET

Grip replacement made easy! With the lock-on grips set, the grips are locked onto the handlebar by a clamp. The laborious process of gluing the grips and securing them with wire is no longer necessary.



720.02.931.144/04

FLEX CLUTCH LEVER

Minimize the possibility of a broken lever with these levers that are designed to fold away on contact with the ground.

720.13.902.144/04

FLEX BRAKE LEVER

Minimize the possibility of a broken lever with these levers that are designed to fold away on contact with the ground.



U695.1716

GRIP DOUGHNUT SET

Optimum protection against blisters on the thumbs with these coated neoprene rings. Simple to slide onto the grips.



781.02.922.000

MUD GRIPS

The mud grips are simply pulled over existing grips and guarantee a secure hold on the grip rubber, even in extremely muddy conditions, thanks to their special material mix.



781.12.916.000

FRONT STRAP



777.02.944.000

CNC CLAMP WITH SLIDE INSERT

The clamp and its plastic insert are designed in such a way that the brake and clutch controls twist in the event of a minor fall, thereby reducing the risk of a lever breaking.

HIGH VERSION

603.02.179.000/04 ■

603.02.179.100/28 ■

603.02.179.100/30 ■

HANDGUARDS

The closed, two-component plastic handguards developed by KTM feature a black center section that offers maximum strength for optimum protection. The colorful upper and lower parts are highly flexible to endure even the roughest of treatment without complaint. Available in two different heights.



LOW VERSION

780.02.079.100/04 ■

780.02.079.200/28 ■

780.02.079.200/30 ■

HANDGUARDS

720.02.979.000/04 ■

720.02.979.000/28 ■

720.02.979.000/30 ■

MX HANDGUARDS

Thanks to splitting of the surfaces, these open, very light KTM (MX) handguards ensure an uncompromising racing look in the angular KTM design with two-component injection moulding technology:

- Black center section = maximum strength for optimum protection
- Colored upper and lower parts = highly flexible for enduring the roughest of treatment

Attached directly at the levers with a special mounting.



765.02.979.000/04 ■

765.02.979.000/28 □

765.02.979.000/30 ■

ALUMINUM HANDGUARDS

These handguards developed especially for KTM bikes are an indispensable companion for serious offroad use. The wide, spacious design ensures excellent mobility and maximum protection against impact, roost, branches, etc.



01
02
03
04
05
06
07
08
09
10
11
12
13
14
15
16
17
18
19
20

585.12.050.144

CLAMP FOR STEERING DAMPER



772.12.905.444

BRACKET FOR STEERING DAMPER



770.12.005.144

MOUNT FOR SXS STEERING DAMPER



770.12.005.644

PHDS MOUNT FOR SXS STEERING DAMPER

This bracket is required for fitting PHDS handlebar support SXS.07.125.200 in conjunction with SXS steering damper 770.12.005.000 or steering damper 585.12.050.100, whereby the latter is only permissible if steering damper clamp 585.12.050.144 or 585.12.050.544 is used.



770.12.005.000

SXS STEERING DAMPER

More safety and stability at the fork when you're riding at high speeds. The fully adjustable, very lightweight KTM steering damper is also an unbeatable value for money. The well thought-out mounting of the damper allows individual adjustment of the handlebar, even after installation. Very low profile.



585.12.050.100

STEERING DAMPER

Have your bars been ripped from your hands? This high-end steering damper ensures maximum control on fast tracks with a substantial improvement in safety!

Further benefits:

- Extremely low weight
- Sensitive responsiveness
- High speed setting
- Ideal setting range with 25 possible clicks



SXS.07.125.200

PHDS - PROGRESSIVE HANDLEBAR DAMPING SYSTEM

The CNC-machined handlebar mounting with cushioning rubber inserts relieves wrist and shoulder joints.

Further benefits of the PHDS:

- Cushioning of heavy knocks
 - Absorption of vibration from chassis and engine
 - Additional handlebar damping in horizontal direction
 - Optimum steering precision
 - Handlebar height adjustable to 2 positions
 - Further damping elements available in three degrees of hardness (soft, medium, hard) for individual tuning
- PHDS bar pad: SXS.07.250.800

777.01.939.010 10 MM

777.01.939.020 20 MM

777.01.939.030 30 MM



CNC HANDLEBAR RISER

These CNC-machined, high-strength aluminum handlebar risers are extremely robust thanks to their special screw fastening (from below) on the triple clamp. Twisting and bending are therefore practically impossible. Use of these handlebar risers is only possible on CNC-machined triple clamps. Available in three different heights.

789.01.939.044 32 MM

789.01.939.144 37 MM

789.01.939.244 42 MM

789.01.939.344 47 MM

789.01.939.444 52 MM



HANDLEBAR SUPPORT

Available in five different heights. Included in the kit are 2 x handlebar support lower parts and 2 x fastening bolts. The upper parts and bolts required for clamping the handlebar are taken from the original handlebar support.



515.39.974.200
FREERIDE 250 R

MAP SWITCH

Ignition curve adjustment made easy! With this switch, you can change the ignition curve conveniently from the handlebar on models featuring a digital box with pre-programmed ignition curves. (Whether or not your KTM has pre-programmed ignition curves can be found in the motorcycle owner's manual).

772.02.002.144

BAR PAD

Provides optimum protection. Required at most events.



548.02.005.000

BAR ENDS

Protects grip rubbers from grazing in the event of a fall.



502.12.040.000/30

RACING MIRROR

Left-hand version, light and robust.



700.07.025.050/28

BATTERY COVER LEFT

700.08.041.000/28

SIDE COVER LEFT

700.08.113.100/28

FREERIDE 250 R/350/E-XC/E-SM

REAR FENDER

700.07.025.051/28

BATTERY COVER RIGHT

700.08.042.000/28

SIDE COVER RIGHT

700.08.054.000/28

SHROUD SET

471.08.010.000/28

FRONT FENDER

700.08.002.000/28

HEADLIGHT MASK

471.01.094.000/04

471.01.094.000/28

FORK PROTECTION SET

720.08.190.000

FREERIDE GRAPHICS KIT



725.08.190.000

RACE LINE GRAPHICS KIT



700.07.040.100

HIGH SEAT

Approx. 7 mm higher than the standard seat.

700.07.040.000

LOW SEAT

Provides shorter riders with optimum control of the motorcycle in difficult terrain.
Approx. 7 mm lower than the standard seat.

700.07.940.000

SOFT SEAT

Particularly elastic foam for extra comfort.
Approx. 7 mm higher than the standard seat.



720.12.927.044

REAR RACK

Reinforcement for the rear end of your Freeride. Required when using universal rear bag 5 L 781.12.978.000.



DO YOU KNOW THAT ALL KTM CNC PARTS ARE MANUFACTURED FROM THE HIGHEST QUALITY ALUMINUM AND THEREFORE NOT ONLY LOOK GOOD, THEY ALSO WITHSTAND THE TOUGHEST TREATMENT?

With the anodized aluminum components in the original factory look from the PowerParts range, you can turn your KTM into something very special.

548.13.951.100

STEP PLATE FOR BRAKE LEVER

7 mm wider contact surface than standard.



777.34.931.144

STEP PLATE FOR SHIFTING LEVER

5 mm wider contact surface than standard.



794.30.920.044

FACTORY OIL PLUG



700.13.903.000

HANDBRAKE CYLINDER COVER



720.02.903.000

HYDRAULIC CLUTCH COVER



725.12.955.044 -25 MM

LOW SUSPENSION KIT

The low suspension kits specially developed by KTM in collaboration with WP are the perfect compromise between maximum chassis performance and minimum possible seat height. Just like the standard parts, the components used here are manufactured from the highest quality materials and, they have been specially tuned for offroad use in intensive endurance tests. To ensure best possible function of the suspension kits, we only recommend use with a rider weight of up to 150 lbs.



U695.1087

HUB DECAL KIT

4 pieces 37 x 31 mm, 4 pieces 48 x 40 mm.

777.10.976.050/04

VALVE CAP SET



777.10.976.150/04

VALVE CAP SET



780.09.099.000

RIM STICKER SET

Orange, pre-cut sticker, suitable for front and rear rim.



781.09.999.000

RIM STICKER SET

Pre-cut sticker, suitable for front and rear rim.

720.10.951.046/04 T46

720.10.951.048/04 T48

720.10.951.050/04 T50

REAR SPROCKET ORANGE

This rear sprocket not only looks cool, it also provides the following benefits:

- Manufactured from high-strength 7075-T6 aluminum, the strongest aluminum in the world
- The chain runs smoothly, straight as a die and true, because its ground level to an accuracy of 0.002 mm
- No small stones or dirt particles can become stuck under the chain thanks to angled recesses between the teeth
- All these properties mean lower wear and extreme durability
- Orange anodized with a permanent, organic and environmentally friendly pigment



01
02
03
04
05
06
07
08
09
10
11
12
13
14
15
16
17
18
19
20



470.10.960.000 210 MM

WAVE BRAKE DISC

Full version for muddy track conditions; minimizes brake pad wear.



700.10.060.000 230 MM

WAVE BRAKE DISC

The larger diameter of this brake disc ensures even better braking power. Rear brake caliper mounting kit 720.10.960.044 is required for installation.

725.13.975.000/30

BRAKE CALIPER SUPPORT

Lighter and stiffer than the standard brake caliper support. The stiffness has a positive effect on such braking properties as braking power and application. CNC-machined from highest grade aluminum and black anodized. Options available: Carbon brake disc protection 777.13.975.030.



777.13.975.030

CARBON BRAKE DISC PROTECTOR

Protects the rear brake disc from roost and other solid objects while maintaining minimal weight. Designed to fit on CNC brake caliper support 777.13.975.010/30 or 725.13.975.000/30



781.04.070.100/04

CHAINGUIDE





780.03.940.244

PIVOT PEGZ

Ingenious: Footpegs that move with you when you shift your weight. Developed and tested by KTM professional riders. Ideal for all riding conditions.

The benefits:

- Spring-mounted, 20° rotational movement possible towards front and rear
- More control and grip in the corners thanks to the maneuverability
- Large tread surface area of 60 mm
- Simpler and quicker weight shifting
- Simpler gear changing and braking
- Permanent contact between boot and footpegs: extends the service life of your boots!



772.03.940.000

TITANIUM FOOTPEGS

33% lighter, despite larger tread surface 90 mm x 55 mm (compared with standard footpegs 82 mm x 45 mm). These titanium footpegs have been developed to meet the requirements of our KTM factory riders. Thanks to use of the special titanium, wear has also been reduced to a minimum.



781.01.900.100

BLEEDER VALVE SET

Bleeder valves designed especially for WP forks. A quick press of the finger and the fork is bled.

773.11.953.000

LITHIUM ION BATTERY 5S

Our lithium ion batteries offer the following advantages:

- 2.2 lbs lighter than standard battery 773.11.053.000
 - 3.5 lbs lighter than standard battery 585.11.053.000
 - Unbeatable cost / weight saving ratio
 - Mountable in any position, as it does not contain acid
 - Reliable technology and long service life
- Technical data:
- 12 V maintenance-free lithium-ion battery
 - Capacity 1.2 Ah
 - Recommended charging current -2.5 amps
 - Maximum charge current for fast charging -12 amps
 - Quick charging possible with high charging current (up to 90 % in 6 min)
 - Very low self-discharge (max. 5 % per month)
 - Balanced discharge / charge of all cells through balancer
 - Contains no heavy metals

When mounting on SX-F models from 2016 on later, the battery compartment 790.11.955.044 is also required





720.10.961.000

REAR BRAKE DISC GUARD

Protects the rear brake disc from rocks and other solid objects in the event of a crash or in the heat of battle. Made of high-strength aluminum.



720.35.936.000

RADIATOR PROTECTION

Perfect protection for radiators. Simple fitting.



THE KTM ALUMINUM SKID PLATES PROVIDE THE MOST EFFECTIVE PROTECTION FOR FRAME AND ENGINE:

- Made from 4 mm-thick, high-strength, robust aluminum
- Side parts welded from inside and out
- Extremely hard-wearing and endurance-tested for the toughest offroad use
- Precisely fitting design - Specially developed for KTM FREERIDE
- Highest quality workmanship
- Quick and simple installation

725.03.990.000

SKID PLATE



725.06.920.003

DUSTCOVER FOR AIR FILTER

This large-pored air filter cover acts as an additional protective layer, hence extending the filter service interval. Recommended in extremely dusty conditions.



720.03.994.000

FRAME DECALS

For protecting your frame without altering the slender profile of your bike.



720.09.961.000

FRONT BRAKE DISC GUARD





DO YOU KNOW ABOUT THE BENEFITS OF A CNC-MACHINED TRIPLE CLAMP?

- All KTM CNC-machined triple clamps have the following properties:
- Manufactured from highest grade aluminum
 - Optimally tuned steering stem stiffness
 - 100% alignment of the fork tubes
 - Perfect flexibility – adapted precisely to the KTM fork

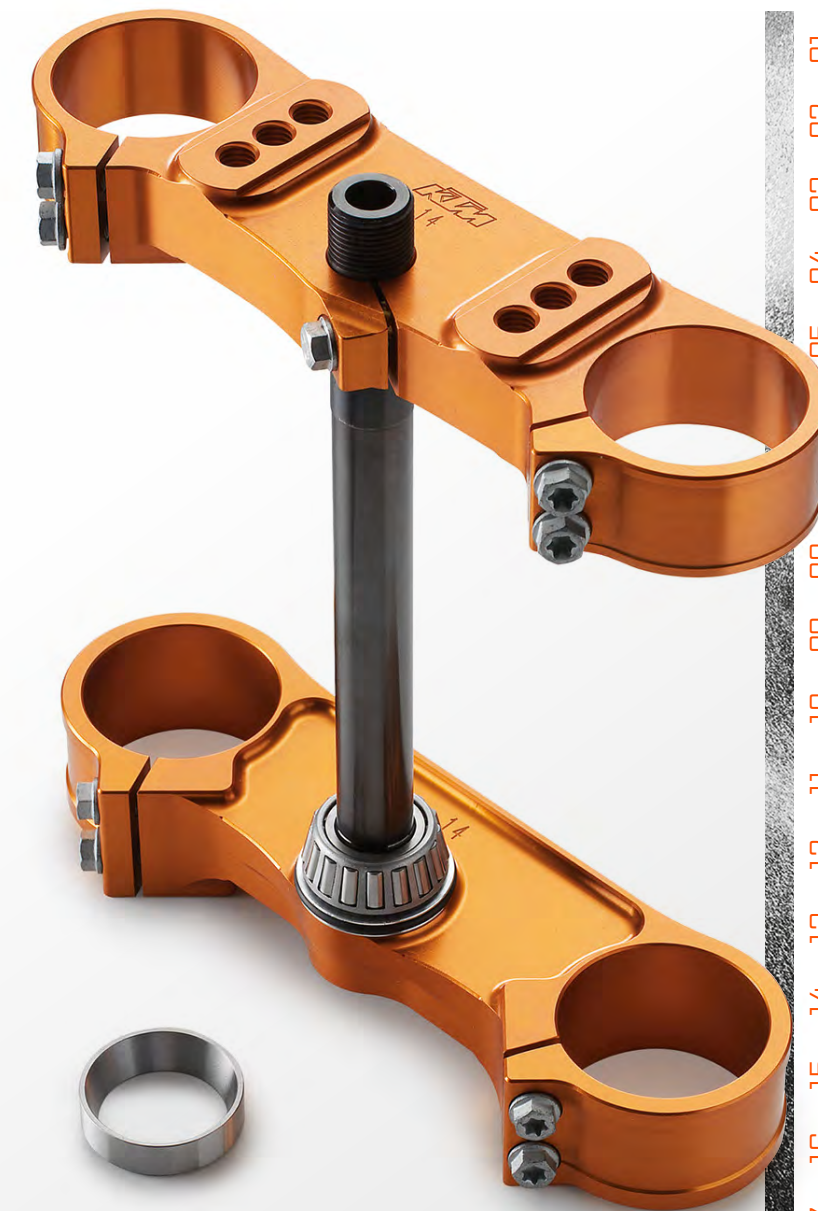
Shorter offset: stability on fast straights.
 Longer offset: simpler and swifter steering into corners.
 All KTM triple clamps are supplied with steering stem and with the steering head bearing already pressed on.

463.01.996.000
 65 SX 02-17

470.01.996.000
 85/105 SX

FACTORY START

This is how the factory riders start! The factory start is mounted directly on the fork. Before the start, the fork is dipped and fixed in the desired position to shift the center of gravity forwards. This to a large extent prevents the front wheel from lifting at the start, thus providing greater traction and perhaps securing you the holeshot. The first time the fork dips, the device releases and you are **READY TO RACE!**



460.01.999.022/04 22 MM OFFSET
 65 SX 12-17

471.01.999.014/04 14 MM OFFSET
 85/105 SX 03-17

470.01.099.020/04 20 MM OFFSET
 85/105 SX 03-17

FACTORY TRIPLE CLAMP

01
02
03
04
05
06
07
08
09
10
11
12
13
14
15
16
17
18
19
20

HIGHLIGHT

NEW!

471.04.905.000

85 SX 14-17

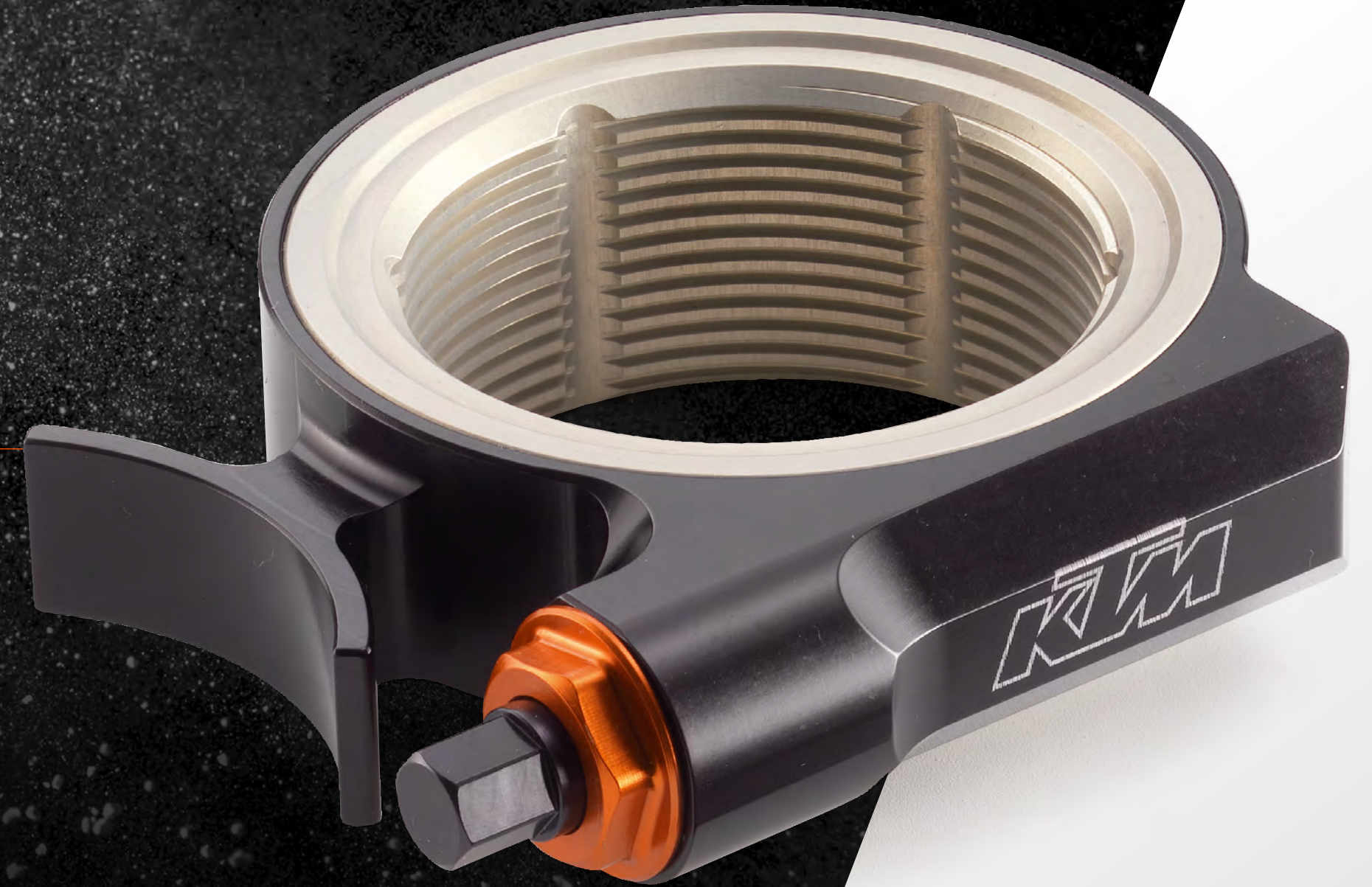
SHOCK ABSORBER PRELOAD ADJUSTER

The preload adjuster for the shock absorber enables fast, precise chassis adjustment as well as visual enhancement.

The key advantages:

- Fast preload adjustment
- Use of the entire length of the thread on the shock absorber
- Very easy operation
- Reduced weight
- Dirt-resistance
- Mechanical drive

The shock absorber must be disassembled in order to mount the preload adjuster.





SXS.15.085.044
85 SX 13-17

SXS CYLINDER HEAD WITH VARIABLE COMBUSTION CHAMBER

The SXS cylinder heads with variable combustion chamber are a must for every racer. The aluminum alloys and optimized combustion chamber shapes employed ensure the best possible heat dissipation. This has a positive effect on power delivery and reduces material wear in the combustion chamber and on the piston. Replacement of the whole head is now no longer necessary – simply put in a new combustion chamber insert and off you go again. To increase the performance of your bike even further, we recommend combination of the SXS cylinder heads with the following parts:

- SXS CDI unit
 - Factory exhaust system
- Supplied without combustion chamber insert.

IMPORTANT:

When it comes to carburetor jets, we recommend selection of your vehicle's standard jets. Detailed information about carburetor jets is available from your authorized KTM dealer.



461.31.917.000
65 SX 04-17

IDLING AIR ADJUSTMENT SCREW

The larger outer diameter of the screw head counteracts the effect of soiling in the adjustment screw channel. Furthermore, the screw is longer and easier to access for setting the idle mixture on the carburetor.



SXS.13.085.081
85 SX 13-17

SXS CYLINDER HEAD COMBUSTION CHAMBER INSERT EXTREME

The combustion chamber insert is made from an alloy developed specially for this purpose. The excellent conductivity of this alloy increases the capability of your engine in extreme conditions, particularly when it needs to deliver maximum performance (ex. in high temperatures, sandy track conditions or other extreme situations).



SXS.13.085.061
85 SX 13-17

SXS CYLINDER HEAD COMBUSTION CHAMBER INSERT MX

Combustion chamber insert manufactured from highest grade aluminum, with standard combustion chamber shape.



SXS.16.105.000
85 SX 13-17

105 SXS KIT

Big bore kit with extra displacement (105 instead of 85). For more torque and even more peak power.



452.12.948.144
50 SX -13

452.12.948.244
50 SX MINI 14-17

POWER REDUCTION KIT

With this, racers of the future can ride their first laps safely. Reduces the power by approx. 70%.



452.12.948.344
50 SX 14-17

POWER REDUCTION KIT

With this, racers of the future can ride their first laps safely. Reduces the power by approx. 70%.

35 YEARS OF RACING EXPERIENCE:

The FMF factory pipes have been specially developed for the hardships of offroad life. That's why they're made from high quality, extra thick, hardwearing sheet steel. An elegant appearance is ensured by the nickel-plated, stainless, polished surface. For years and years.

ADDITIONAL FEATURES:

- Broader and more usable rev range
- Higher top speed
- More traction, better control when accelerating
- Including O-rings

For a perfectly tuned and performance-optimized overall system, we recommend combination with an FMF factory silencer.

SXS.13.085.500

85/105 SX 13-17

FACTORY PIPE



SXS.09.050.500

50 SX 09-17

FACTORY PIPE



SXS.11.150.505

50 SX 09-16

SXS.11.065.505

65 SX 09-15

SXS.13.085.505

85/105 SX 13-16

FACTORY PIPE

Unplated SXS Works Version.



SXS.11.065.500

65 SX 09-15

FACTORY PIPE



THE FMF FACTORY SILENCERS ("MADE IN USA") ARE TOP-PERFORMANCE SILENCERS.

THE BENEFITS:

- Housing made from high-grade, pressed, anodized aluminum
- Factory performance characteristics
- Hi-Flo exhaust technology
- Long service life
- Integrated bracket
- Dynamically formed stainless steel end caps
- Simple fitting

For a perfectly tuned and performance-optimized overall system, we recommend combination with the FMF factory pipe.

SXS.09.050.550

50 SX 09-15

SXS.09.065.550

65 SX 09-15

SXS.16.050.550

50 SX 16-17

SXS.08.085.550

85/105 SX 03-17

FACTORY SILENCER

Replacement decal available. U6910070

U690.6855

85/105 SX 03-16

U690.6853

65 SX 06-08

FACTORY SPARK ARRESTOR

U.S.F.S. Spark Arrestor version of the Factory Silencer.



NEW!

463.05.907.100
65 SX 16-17

FACTORY PIPE

KTM in-house designed exhaust, perfectly matched to your motorcycle.

Benefits:

- Best possible drivability thanks to a punch-packing torque characteristic
- Minimum weight with maximum power yield
- Made of robust steel
- Nickel-plated, stainless and polished surface

We recommend a combination with the factory silencer, for a perfectly tuned and performance optimized system.



NEW!

463.05.979.000
65 SX 16-17

FACTORY SILENCER

This silencer provides a performance boost over the whole RPM range, and fits perfectly with the sporty silhouette of our Mini bikes.

Other benefits:

- Made from the finest aluminum
- Lightweight
- Perfect fit, easy to install

We recommend combining it with the factory exhaust for optimal ride ability and even better performance.



SXS.12.085.500
85/105 SX 03-17

FACTORY PIPE

Factory exhaust, developed in-house and optimally tuned to your bike.

Benefits:

- Fat torque curve for optimal rideability
- Minimal weight and maximal performance
- Made from rugged steel
- Untreated surface for an unadulterated factory look

We recommend combining it with the factory silencer for a performance-optimized system.

SXS.08.085.550
85/105 SX 03-17

FACTORY SILENCER

This factory silencer provides a performance boost over the whole RPM range and fits perfectly with your bike's sporty silhouette.

Other benefits:

- Made from the finest aluminum
- Lightweight
- Perfect fit, easy to install

We recommend combining it with the factory exhaust for optimal rideability and even better performance.



SXS.05.085.390
85 SX 03-17

SXS CDI UNIT

Straight from the world of motorsport: High-performance CDI for the 85 SX – for use with the factory pipe. The ignition point has been optimized precisely for the factory exhaust system in extensive runs on the test bench and numerous test rides.

DO YOU KNOW THAT KTM HANDLEBARS MUST WITHSTAND VERY EXTENSIVE AND SPECIALLY DEVELOPED TEST CYCLES BEFORE THEY COME TO MARKET? THE FACTS:

- All KTM handlebars are made from EN AW 7010 T6 aluminum
- Position markings for simple setting
- Bar pad included



U691.2010
50 SX 01-17

U695.0997
65 SX 02-17
85 SX 03-12

RENTHAL BAR ORANGE

NEW!

471.02.901.100/04
85 SX 13-17

ORANGE ANODIZED BAR

The special aluminum alloy used for this handlebar makes it possible to eliminate the cross brace, without any negative impact on the required rigidity and flexibility of the handlebar. 86 mm X 779 mm X 48 mm.



777.01.939.010 10 MM

777.01.939.020 20 MM

777.01.939.030 30 MM
85 SX 13-17

CNC HANDLEBAR RISER

These CNC-machined, high-strength aluminum handlebar risers are extremely robust thanks to their special screw fastening (from below) on the triple clamp. Twisting and bending are therefore practically impossible. Use of these handlebar risers is only possible on CNC-machined triple clamps. Available in three different heights.



777.02.944.000

65 SX 14-17
85 SX 13-17

CNC CLAMP WITH SLIDE INSERT

The clamp and its plastic insert are designed in such a way that the brake and clutch controls twist in the event of a minor crash, thereby reducing the risk of a lever breaking.



SXS.07.125.200
85 SX 13-17

PHDS-PROGRESSIVE HANDLEBAR DAMPING SYSTEM

The CNC-machined handlebar mounting with cushioning rubber inserts relieves wrist and shoulder joints.

Further benefits of the PHDS:

- Cushioning of heavy hits
- Absorption of vibration from chassis and engine
- Additional handlebar damping in horizontal direction
- Optimum steering precision
- Handlebar height adjustable to 2 positions
- Further damping elements available in three degrees of hardness (soft, medium, hard) for individual tuning

PHDS bar pad: SXS.07.250.800



DO YOU KNOW THAT ALL KTM CNC PARTS ARE MANUFACTURED FROM THE HIGHEST QUALITY ALUMINUM AND THEREFORE NOT ONLY LOOK GOOD, THEY ALSO WITHSTAND THE TOUGHEST TREATMENT?

With the anodized aluminum components in the original factory look from the PowerParts range, you can turn your KTM into something very special.

SXS.13.050.034

50 SX MINI 09-17
50 SX 09-17

FACTORY CLUTCH COVER

Replacement plug SXS.13.050.010



SXS.14.050.132

50 SX 09-17

FACTORY IGNITION COVER

Replacement Gasket SXS.14.050.036



SXS.14.085.035

85 SX 03-17

FACTORY CLUTCH COVER



SXS.14.085.032

85 SX 03-17

FACTORY IGNITION COVER

Replacement Gasket (SXS.14.085.036)



SXS.14.065.032

65 SX 09-17

FACTORY IGNITION COVER

Replacement Gasket (SXS.14.065.036)



SXS.13.085.033

85 SX 13-17

CASE GUARD

CNC-machined from high-strength aluminum, the best possible and effective protection for the clutch slave cylinder.



SXS.12.065.044

65 SX 09-17

CASE GUARD

CNC-machined from high-strength aluminum, the best possible and effective protection for the clutch slave cylinder.



NEW!

SXS.16.050.044

50 SX MINI 16-17

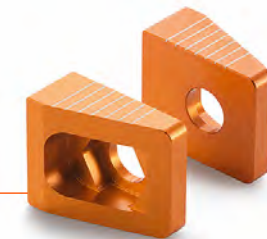
CHAIN ADJUSTMENT KIT



SXS.13.065.031

65 SX 08-15

CHAIN ADJUSTMENT KIT



SXS.12.065.030

65 SX 08-15

CHAINGUIDE



SXS.11.050.044

50 SX 09-15

CHAIN ADJUSTMENT KIT

Including orange anodized chainguide.



NEW!

794.30.920.044

50/65 SX 09-17
85 SX 08-17

FACTORY OIL PLUG



720.02.903.000

65 SX 14-17
85 SX 13-17

HYDRAULIC CLUTCH COVER



700.13.903.000

65 SX 14-17
85 SX 13-17

HAND BRAKE CYLINDER COVER



SXS.05.450.220

65 SX 02-13
85/105 SX 03-12

HYDRAULIC CLUTCH COVER

Installation possible with Magura clutch master cylinders.





781.02.924.000

50 SX MINI	12-17
50 SX	12-17
65 SX	09-17
85 SX	03-17

LOCK-ON GRIP-SET

Grip replacement made easy! With the lock-on grips set, the grips are locked onto the handlebar by a clamp. The laborious process of sticking the grips and securing them with wire is no longer necessary.



462.13.802.000/04

65 SX	04-11
85/105 SX	04-12

462.13.802.100/04

65 SX	12-13
-------	-------

720.13.902.144/04

65 SX	14-17
85 SX	13-17

FLEX BRAKE LEVER

Ever had to give up during the race because of a broken clutch or brake lever? Help prevent that from happening with these levers that are designed to fold away on contact with the ground.

462.02.831.000/04

65 SX	04-13
85/105 SX	04-12

720.02.931.144/04

65 SX	14-17
85 SX	13-17

FLEX CLUTCH LEVER

Ever had to give up during the race because of a broken clutch or brake lever? Help prevent that from happening with these levers that are designed to fold away on contact with the ground.



720.02.979.000/04 ■

720.02.979.000/28 ▣

720.02.979.000/30 ■

65 SX	14-17
85 SX	13-17

MX HANDGUARDS

Thanks to splitting of the surfaces, these open, very light KTM MX handguards ensure an uncompromising racing look in the angular KTM design. In two-component injection moulding technology:

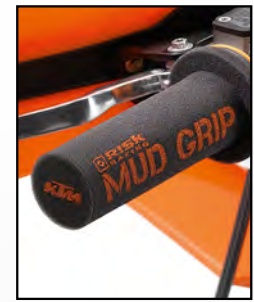
- Black mid-section = maximum strength for optimum protection
- Colored top and bottom parts = highly flexible, enduring even the roughest of treatment

Attached directly at the levers with a special mounting.

U695.1716

GRIP DOUGHNUT SET

Optimum protection against blisters on the thumbs with these coated neoprene rings. Simple to slide onto the grips.



781.02.922.000

MUD GRIPS

The mud grips are simply pulled over existing grips and guarantee a secure hold on the grip rubber, even in extremely muddy conditions, thanks to their special material mix.

// MASTER THE RIDE

The high-quality and fully adjustable WP competition shock absorbers for the KTM MINI product line up offer the highest performance in these classes. Thanks to modern, friction optimized components, the shock absorber significantly gains performance and reduces the physical efforts of the young rider.

- Adjustable rebound
- Adjustable high & low speed compression
- Stepless adjustable spring preload
- All adjustments externally performable with standard tools



WP 50 Competition Shock Absorber



WP 65 Competition Shock Absorber



WP 65 SX Off Road Competition Front Fork

The WP 65 SX Off-road competition fork offers individual adjustability along with well-spaced service intervals.

- Adjustable rebound damping
- Adjustable compression damping
- Stepless adjustable spring preload
- All adjustments externally performable with standard tools

Optional springs for your competition suspension are available only directly via the WP Authorized Center.

// Off Road Competition Front Fork

MODELS	SPRING	RIDERS WEIGHT	ITEM NUMBER
65 SX	SOFTER	< 35 kg	9501.0056
65 SX	STANDARD	35 – 45 kg	9501.0044
65 SX	HARDER	> 45 kg	9501.0057

// Competition Shock Absorber

MODELS	SPRING	RIDERS WEIGHT	ITEM NUMBER
50 SX	SOFTER	15 – 25 kg	9301.0201
50 SX	STANDARD	25 – 35 kg	9301.0202
50 SX	HARDER	> 35 kg	9301.0203
65 SX	SOFTER	< 35 kg	9301.0204
65 SX	STANDARD	35 – 45 kg	9301.0205
65 SX	HARDER	> 45 kg	9301.0206

HOW TO ORDER

These parts are available only directly via the WP Authorized Center Network. To find the right article number for your bike, visit the suspension configurator at www.wp-group.com or directly search for your Authorized Center at www.wp-group.com/dealer

GET IN FRONT





WP 85 SX Off Road Competition Front Fork

The WP 85 SX Off Road Competition Front Fork can be individually adjusted for each rider and riding style:

- 43 mm closed cartridge technology
- Improved response due to the use of friction-optimized parts
- Adjustable rebound damping
- Adjustable compression damping
- Individually adjustable spring preload



WP 85 SX Trax Shock

The high-grade and fully adjustable WP TRAX shock absorber for the KTM 85 SX has been developed on the basis of extensive experience and test results gained in international racing. They provide complete setting options for simple optimization of the bike to the requirements of junior riders.

- More traction and grip from the rear wheel allows for better acceleration
- The motorcycle rides higher over a series of bumps (no "packing down")
- Adjustable rebound damping
- Adjustable high and low speed compression damping
- Continuously adjustable spring preload

HOW TO ORDER

These parts are available only directly via the WP Authorized Center Network. To find the right article number for your bike, visit the suspension configurator at www.wp-group.com or directly search for your Authorized Center at www.wp-group.com/dealer

GET IN FRONT



453.03.994.000/EB
50 SX 16-17

463.03.994.000/EB
65 SX 16-17

471.03.994.000/04
85 SX 13-17

FRAME DECALS

For protecting your frame without altering the slender profile of your bike.



462.03.094.000
65 SX 09-15

FRAME PROTECTION SET

Reliably prevents damage to the powder coating by dirt, crashes or the rider's boots. Also protects pants and boots from burns on the exhaust side.



781.07.908.144
65 SX 10-17

FACTORY FUEL TANK CAP



777.07.908.244
85 SX 13-17

FACTORY FUEL TANK CAP

U695.1010

FACTORY FUEL TANK CAP VENT



471.35.924.044/04
85 SX 13-17

ORANGE RADIATOR HOSE

For a higher level of performance and appearance! These reinforced silicon-rubber cooling hoses have been specially developed to withstand extreme pressures and temperatures. The special surface of their rubber compound has also improved the flow behavior.



471.07.940.000
85 SX 13-17

HIGH SEAT

Grow a little with the bike. For the somewhat taller racers of the future. Approx. 20 mm higher than the standard seat.

471.07.940.100
85 SX 13-17

LOW SEAT

Just made the switch and not big enough for the bike yet? The low seat provides shorter riders with optimum control of the motorcycle. Approx. 15 mm lower than the standard seat.

471.07.940.200
85 SX 13-17

STEPUP SEAT

The factory rider seat: Thanks to the special step, there's no slipping backwards when you open up the throttle. Standard height.



01
02
03
04
05
06
07
08
09
10
11
12
13
14
15
16
17
18
19
20



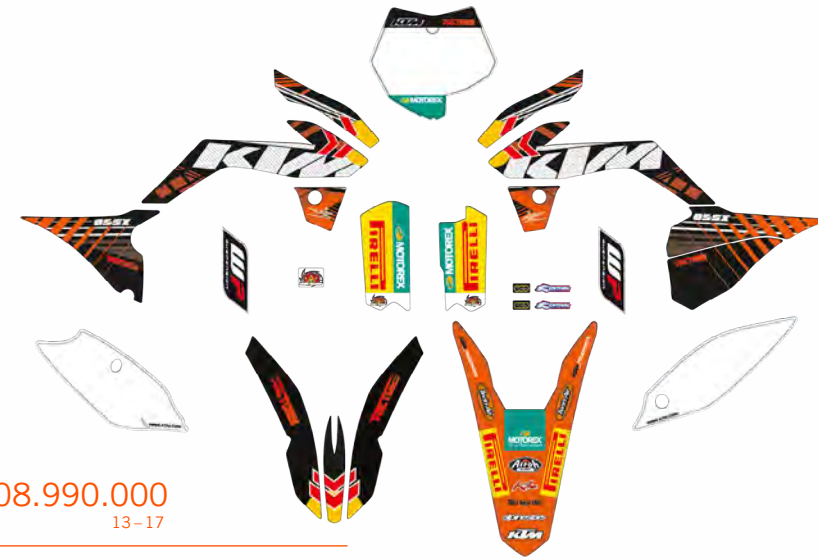
463.08.990.000
65 SX 16-17

FACTORY GRAPHICS KIT



453.08.990.000
50 SX 16-17

FACTORY GRAPHICS KIT



471.08.990.000
85 SX 13-17

FACTORY GRAPHICS KIT



UPP.15.08.021
50 SX 09-15

UPP.15.08.022
65 SX 09-15

UPP.15.08.023
85 SX 13-16

KURT CASELLI FOUNDATION GRAPHICS

Ride like Caselli with these special edition Kurt Caselli Foundation graphics. A portion of all proceeds will be donated to the Kurt Caselli Foundation.

452.08.088.000/20
50 SX 09-15

462.08.088.000/20
65 SX 09-15

470.08.088.000/20
85/105 SX 03-12

471.08.988.000/28
85 SX 13-16

WHITE NUMBER PLATE BACKGROUNDS

3 pieces.



01
02
03
04
05
06
07
08
09
10
11
12
13
14
15
16
17
18
19
20

U691.2015

50 SX 09-15

U691.2016

65 SX 09-15

U691.2017

85 SX 06-12

USA FACTORY GRAPHICS KIT

Now your little racer can look just like his or her offroad heroes. Printed on thick vinyl with 3M adhesive.



UPP.15.08.012

50 SX 09-15

UPP.15.08.013

65 SX 09-15

ORANGE BRIGADE TEAM REPLICA GRAPHICS



462.08.990.000

65 SX 09-15

FACTORY GRAPHICS KIT



U691.3125

50 SX 04-13 T38

RENTHAL SPROCKET

U691.3128

50 SX 14-16 T38

RENTHAL SPROCKET

U695.1251

T46

U691.1024

T47

U695.1252

T48

U695.1253

65 SX T49

RENTHAL SPROCKET

U695.1254

T44

U695.1255

T45

U695.1256

T46

U695.1257

T47

U695.1258

85 SX T48

RENTHAL SPROCKET

Made exclusively for KTM by Renthal, these orange anodized rear sprockets are used by the KTM Race Teams. Lightweight, durable and provide great performance.



461.10.051.150/04 T50
65 SX

470.10.051.148/04 T48
85 SX

470.10.051.149/04 T49
85 SX

470.10.051.150/04 T50
85 SX

2K REAR SPROCKET ORANGE

If you're looking for the ultimate in quality and performance, this sprocket is the one for you!

- High-strength steel teeth, give long service life
- Aluminum inner ring, to reduce unsprung weight
- Joined together permanently with high-strength rivets
- At least three times longer service life than other aluminum rear sprockets
- 50% lighter than a conventional steel rear sprockets

Another benefit: more durable rear sprocket, helps increase the service life for the entire drivetrain. 2K sprockets are exclusively produced for KTM by Supersprox. This product is protected under the following patents in Europe and USA. EU patent # EP1573234. US Patent # 7.481.729. Patent owner supersprox a.s.



461.10.165.112
1/2" X 1/4"

65 SX CHAIN



451.10.265.104
1/2" X 3/16" RACING

50 SX RACING CHAIN

This chain is specially developed for motocross use. The special construction of the bearing bushes results in the perfect compromise between durability and minimum power loss.



725.13.975.000/30
85 SX 13-17

BRAKE CALIPER SUPPORT

Lighter and stiffer than the standard brake caliper support. The stiffness has a positive effect on such braking properties as braking power and application. CNC-machined from the highest grade aluminum and anodized black. Options available: Carbon brake disc protection 777.13.975.030.



720.10.961.000
85 SX 13-17

REAR BRAKE DISC GUARD

Protects the rear brake disc from roost and other solid objects in the event of a crash or in the heat of battle. Made of high-strength aluminum.



720.09.961.000
85 SX 13-17

FRONT BRAKE DISC GUARD

The intelligent fitting system with a central adapter replaces the spacer sleeve on the wheel axle and allows the tire to be changed, brake to be serviced, etc., without removing the brake cover.



777.13.975.030

CARBON BRAKE DISC PROTECTOR

Protects the rear brake disc from roost and other solid objects. Can be fitted on the CNC brake caliper support 725.13.975.000/30.



452.13.930.000
50 SX 02-17

BRAKE PADS

Fully Sintered pads for maximum braking performance.



470.09.060.200 260 MM
85 SX 13-17

OVERSIZED FRONT WAVE BRAKE DISC

Floating, stainless steel brake disc. Since the hot disc can expand, the pressure point remains constant even at extreme temperatures and loads. The best basis for consistently quick lap times. Brake caliper mounting kit 720.09.960.044 required for installation.



470.10.960.000 210 MM
85 SX 13-16

BRAKE DISC REAR

Full version for muddy track conditions; minimizes brake pad wear.



700.10.060.000 230 MM
85 SX 13-17

OVERSIZED REAR WAVE BRAKE DISC

The larger diameter of this brake disc ensures even better braking power. Rear brake caliper mounting kit 720.10.960.044 is required for installation.



AN OFFROAD SORTIE IS NO WALK IN THE PARK! KTM ALUMINUM SKID PLATES PROVIDE THE MOST EFFECTIVE PROTECTION FOR FRAME AND ENGINE:

- Made from 4 mm-thick, high-strength, robust aluminum
- Extremely hard-wearing and endurance-tested for the toughest offroad use
- Precisely fitting design – specially developed for KTM models
- Highest quality workmanship
- Quick and simple installation

462.03.090.000
65 SX 09-17

SKID PLATE



471.03.990.000
85 SX 13-17

SKID PLATE



01
02
03
04
05
06
07
08
09
10
11
12
13
14
15
16
17
18
19
20

510.12.093.000

TIRE IRON LONG

Practical tire iron – long version for minimum effort.



510.12.092.000

TIRE IRON SMALL

Practical tire iron – short version ideal for the portable tool bag.



781.29.984.000

TIRE IRON SET

Made from high-strength, orange-anodized aluminum; not suitable for fitting tires with mousse tubes. With integrated ring spanners 32, 27, 17, 13 and 10 mm.



000.29.901.000

BEAD BUDDY

The Bead Buddy acts as your third hand when fitting tires. Holds the tire in the tire bed, thereby making tire fitting much easier. Simply hook it into the spokes and away you go. Highly recommended for tire fitting with mousse tubes.



780.29.962.000/30

MAGNETIC BOLT PAN

Never lose a bolt again! Perfect for use in combination with the SX stand.

000.29.098.200

SCREW DRIVER SET

High quality, 5-piece screwdriver set in the KTM design.



UPP15.29.020

520 CHAIN

KTM MASTERLINK TOOL

Conveniently remove/install chain masterlink, without damaging the clip.



000.29.996.000

TORQUE WRENCH SET

High-quality, adjustable torque wrench 2–25 NM, including the following accessories:
– Push-on spoke wrenches in sizes 5.65 and 6.95 mm
– Push-on 1/4" ratchet
– Ratchet attachments: 8, 10, 13 mm socket wrench, 15 Torx



000.29.015.000

WIRE PLIERS

Recommended, very practical, high quality tool to help you twist safety wire 548.12.016.000 like a professional.



548.12.016.000

SAFETY WIRE

200 m wire with 0.61 mm diameter.



772.12.991.100

SPOKE WRENCH

6 mm and 7 mm.



000.29.020.000

50/65 SX

SPOKE WRENCH

5 mm and 5.6 mm.



579.29.020.000

SX/SMR/EXC

CHAIN BREAKER

5/8" x 1/4".

U695.1130

ORANGE CABLE TIES

100 pieces, length: 20 cm.



000.29.098.000

TOOLBOX

38-piece, 1/4" tool box in orange with high-quality, chrome-vanadium tools. Ratchet (with locking device), lever, two extensions and socket wrench. Hexagon sockets from 4 to 14mm; Allen keys from 3 to 8mm; Phillips, slotted and Torx bits. With this, small jobs on your KTM can be completed quickly and reliably. Whether you're removing plastics or changing the oil, you'll definitely find the right tool here.



000.29.999.100

125/150 SX/XC-W 07-17
250/300 SX/XC/XC-W 07-17
SX-F/XC-F 07-17
XC-F-W/EXC-F 08-17

BOLT KIT

Contains all the most-used bolts and small parts for a wide range of KTM models. 30% saving compared with purchasing individual parts.



U695.1126

SPOKE TORQUE WRENCH

On this spoke wrench, the torque is preset at 5.4 NM. This prevents over-tightening of the spoke nipples. Too much torque when tightening the spoke nipples is the most frequent cause of broken spokes. Wrench size 6.8 mm.



000.29.098.400

TOOLBOX

60-piece, 3/8" tool box in orange with high-quality, chrome-vanadium tools. Ratchet (with locking device), lever, two extensions and socket wrench. Hexagon sockets from 6 to 24mm; Allen keys from 3 to 10mm; Phillips, slotted and Torx bits from 15 to 55mm. With this, small jobs on your KTM can be completed quickly and reliably. Whether you're removing plastics or changing the oil, you'll definitely find the right tool here.



01
02
03
04
05
06
07
08
09
10
11
12
13
14
15
16
17
18
19
20



000.29.090.100

SAG SCALE

Makes setting the sag significantly simpler. Folding version for easy stowing in the tool box.

000.29.990.010
SX/XC 13-17

SAG SCALE PIN

Extra pin for using the sag scale with larger axle diameters.

590.29.041.000
0.10; 0.12; 0.15; 0.20; 0.25

590.29.041.100
0.05; 0.10; 0.15; 0.20; 0.25; 0.30; 0.35

FEELER GAUGES

583.12.078.000

TOOL BAG



794.12.966.000

DIGITAL PUMP FOR AIR FORK

The perfect tool for tuning your air fork. With this high quality pump, extensively tested by KTM, you can set your air fork effectively and perfectly to your needs and the current track conditions, in a matter of seconds. The one tool that ensures you are READY TO RACE.

583.10.025.000

AXLE GAUGE

The ideal tool for checking perfect wheel position when adjusting the chain.

SXS.08.250.035

ALL FOUR-STROKE KEIHIN CARBURETORS

JET NEEDLE REMOVAL TOOL

Allows simple replacement of the carburetor needle.

503.05.017.000/04

SPRING HOOK

Simple spring removal.

000.29.997.000

MULTI TOOL

The perfect on the go tool! Conveniently packaged in a small bag you can use the tool for following fittings: 14, 12, 10, 8 mm hexagon sockets; 6, 8, 13 mm socket wrench; Inserts for slotted and Phillips screw heads, 5 mm/6 mm Allen keys, 25/30 and 40/45 Torx; bottle opener; and 3 / 8" and 1 / 4" socket drives.

U691.0021

SX/XC/XC-W 04-16

POWER VALVE ADJUSTMENT TOOL

The perfect tool to easily adjust your power valve properly.



773.29.068.000

DIGITAL TIRE GAUGE

Comfortable and easy to use. Fits all standard valves. Pressure display in bar or psi. Integrated pressure release valve for accurate pressure adjustment. Switchable display and work area lighting. Energy-saving function with automatic cut-off. Maximum measuring pressure: 60 psi.

U695.1099

TIRE GAUGE

Easy to use! Measuring range 0-60 psi. Clamping head rotatable 360° on a flexible stainless steel feed line. The valve shaft is therefore accessed easily and quickly. Very accurate measurements by way of a durable internal membrane. Internal pressure is reduced after use by a relief valve (push button).

794.19.910.000

125/150 SX 16-17
250/300 SX/XC/XC-W 17
SX-F/XC-F 16-17

U691.0066

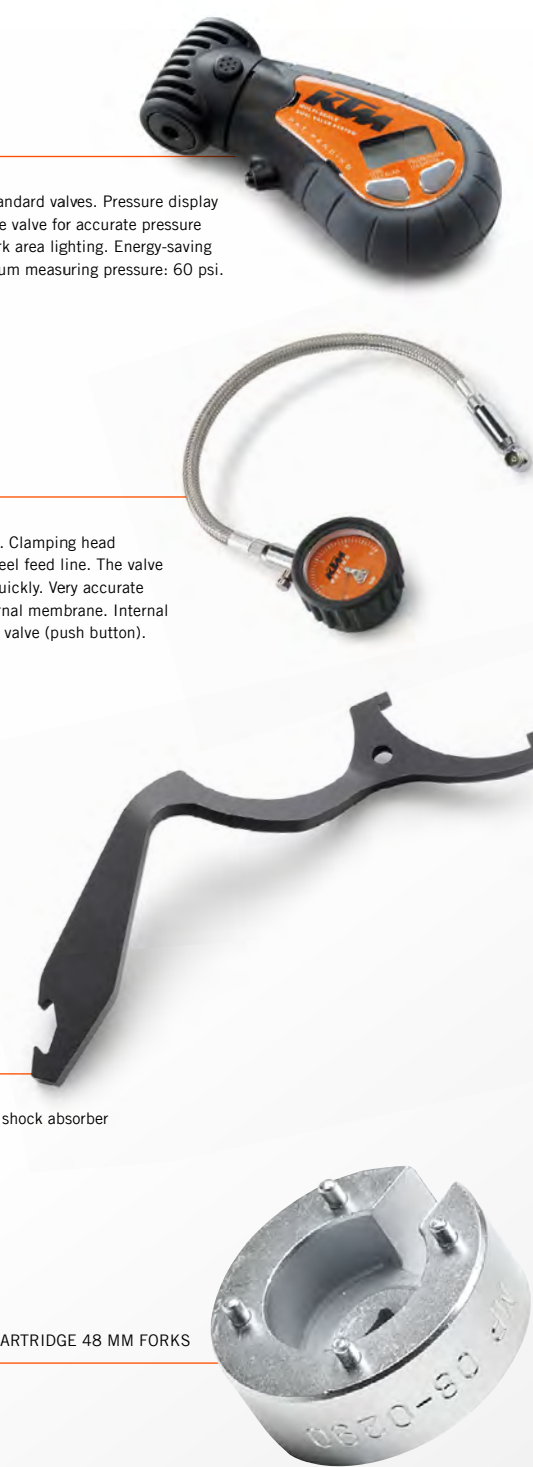
125/150 SX 11-15
250 SX/XC 11-16
SX-F/XC-F 11-15
XC-W/EXC 12-16

SHOCK SPRING PRELOAD ADJUSTER

Practical tool for setting preload on the shock absorber without having to remove it.

U695.1017 ALL OPEN CARTRIDGE 48 MM FORKS

FORK REMOVAL TOOL



773.12.030.000

FOOT AIR PUMP

Small and light, so very portable - saves the day in the event of a puncture on the move! Mini-foot pump with pressure gauge on the swiveling valve head that fits all prevalent valves. Integrated double-cylinder with pressure switch-over to high pressure. Maximum 12 bar/160 psi. Height: approx. 170 mm folded together.

773.12.066.000 CLOSED CARTRIDGE

FORK AIR PUMP

Recommended tool for tuning the closed-cartridge fork precisely to your requirements. For adjusting the air pressure on the compression damping.

U690.9807 CLOSED CARTRIDGE
SX/XC 07-16

SCREW CAP REMOVAL TOOL

Recommended tool for removing the fork caps. Fits all closed cartridge forks.

000.29.016.000 CLOSED CARTRIDGE
SX 07-17

MULTI-PURPOSE TOOL

Recommended tool for removing the screw caps. Fits all closed cartridge forks.



U690.9801

BATTERY CHARGER

Battery charger with test function.

Plus:

- Constant current charge
- Constant voltage charge
- Trickle charging

Includes cable for fixed installation on the battery for a quick and easy connection to the charger.



772.11.942.044

SX/XC -15
XC-W/EXC -16

POWER SOCKET

The simplest way to always keep a battery freshly charged. Once the plug is fitted to the bike, nothing stands in the way of a rapid connection to the battery charger U690.9801. Includes charging cable 601.29.074.050.

452.06.998.000/04

50 SX MINI 09-17
50 SX 09-17

463.06.998.000/04

65 SX 98-17

790.06.998.100/04

125/150 SX/XC-W 16-17
250/300 SX/XC/XC-W 17
SX-F/XC-F 16-17
EXC-F 17

AIR FILTER BOX COVER

Highly recommended! Protects the intake tract from water and dirt when cleaning the air filter box.



590.06.098.000

SX 85/105 03-12
SX 98-06
EXC 98-07

590.06.098.100

SX 07-10
EXC 08-11

772.06.998.000/04

85 SX 13-17
125/150 SX 11-15
250/300 SX/XC/XC-W 11-16
SX-F/XC-F 11-15
XC-W/EXC 12-16

AIR FILTER BOX COVER

Highly recommended! Protects the intake tract from water and dirt when cleaning the air filter box.



790.12.030.100/04

EXHAUST PLUG

Keeps water out of the silencer during cleaning.
For internal diameters 15 mm-38 mm.



790.12.030.000/04

EXHAUST PLUG

Keeps water out of the silencer during cleaning.
For internal diameters 37 mm-62 mm.



595.12.030.200

EXHAUST PLUG

Keeps water out of the silencer during cleaning.
For internal diameters 37-62 mm.



KTM Motorex co-branded products are the direct result of a decade-long racing and development partnership between KTM and Motorex. The research and development over the years results in the absolute best oil available for your KTM motorcycle.

KTM Motorex oils are formulated from the highest-quality synthetic PAO and Ester base stocks and are JASO MA certified. JASO MA oils are required for use in four-stroke KTM motorcycles that use a single oiling system for the engine, transmission and wet clutch system. KTM Motorex guarantees MA performance in its JASO MA-rated lubricants

U691.3020

1L/12

U691.3021

4L/4

MOTOREX AIR FILTER CLEANER



U691.3022

1L/12

U691.3023

4L/4

U691.3024

DRUM

MOTOREX CROSS POWER 4T 10W/50



U691.3025

1L/12

MOTOREX CROSS POWER 4T 10W/60



U691.3031

250 ML

MOTOREX BRAKE FLUID 5.1



U691.3026

1L/12

MOTOREX CROSS POWER 2T PREMIX



U691.3030

1L/12

MOTOREX AIR FILTER OIL



U691.3028

MOTOREX OFFROAD CHAIN LUBE 500 ML



U691.3036

1L/6

MOTOREX MOTO CLEAN



U691.3035

1L/12

MOTOREX COOLANT 3.0



U691.3032

1L/12

U691.3033

4L/4

MOTOREX POWER SYNT 4T 10W/50



U691.3027

1L/12

MOTOREX TOP SPEED 15W/50



781.29.994.000

FORK SEAL DOCTOR

This clever tool is a must for every motorcycle toolbox. With it, you can remove dirt from your fork seals effortlessly. No matter whether it's in the garage or at the track. This tool extends the life of your seals many times over. For all 48 mm forks.



548.29.035.000

MUD REMOVAL TOOL

Use this to remove the dirt from your last mud battle with ease! A motorcycle grip rubber (**not included**) can be fitted to the grip.



780.29.065.000/04

OIL FLASK

Perfect for all two-stroke riders on the move. The small bottle fits in your tool bag or jacket. Capacity 250 ml, with scaling for different mixture ratios (1:40/2.5%; 1:50/2%; 1:60/1.7%; 1:80/1.25%).



780.29.063.000

MEASURING CUP 1,000 ML

1 l Volume with scaling for both the fluid level and different mixture ratios. Perfect for changing the oil and for preparing larger quantities of two-stroke fuel. Simple handling thanks to the ergonomic design.



NEW!

750.29.964.000/04

INJECTOR BOX

Offers secure and clean storage of a spare injector to have with you in case an injector gets contaminated during your ride. Provides space for one injector, as well as the associated seals.



812.12.016.100

250/350 SX-F	11-17
450 SX-F/XC-F	13-17
250/350/450/500 EXC-F	12-17

WASH CAP FOR FUEL HOSE

A must when washing the motorcycle with the fuel tank removed. Prevents water from entering the fuel line.



780.29.064.000/04

SPARK PLUG HOLDER

With space for storing fuses.





451.03.023.300

50 SX

470.03.020.000

65 SX 03-17

85 SX 03-17

105 SX 04-11

777.03.020.000

SX/XC/XC-W/EXC 03-17

PLUG IN STAND



UPP.15.29.010

MATRIX A2 STAND

UPP.15.29.011

50/65/85

MATRIX A2 MINI STAND

Brand new stand made especially for 50 / 65 / 85 models! Aluminum construction with a non-slip pad. The top is wedge shaped and solid so the bike doesn't slide around when washing. Powder-coated orange.



781.29.955.100

SX/XC/XC-W/EXC/FREERIDE

789.29.955.100

SMR

LIFT STAND

Available in two different heights
SX/EXC: 315 mm/425 mm
SMR: 260 mm/370 mm
Maximum load: 330 lbs



780.29.155.000

SX STAND

High quality plastic stand designed especially for KTM offroad bikes. Special features:

- Two different heights possible
- Can be used as a stand for the quickfill system
- Storage space for the front and rear axle when removing the wheels
- Attachments for the following parts: mud removal tool, exhaust plug, magnetic bolt pan and various tools



780.29.155.100

SX STAND SET

High quality plastic stand designed especially for KTM offroad bikes. Complete your stand with mud removal tool, exhaust plug, screw driver set, and magnetic bolt pan.

780.03.923.050

XC/XC-W/EXC/FREERIDE 07-17

KICK STAND PLATE LARGE

Specially for soft ground, such as sand.
Size: 75 x 50 mm.





U695.1277

FOLDING BIKE RAMP

High quality, folding aluminum ramp with straps for secure attachment on loading. Weighing only 12 lbs, it withstands a load of 400 lbs. The total length is approx. 6'6", folded approx. 3'3".



781.12.973.000
 781.12.973.000/99

PLASTIC DRUM

5 gallon, KTM plastic drum for use on the racetrack. Complete with flexible hose and screw cap. Not to be used for storage and transportation of gasoline.

Replacement parts available:
 Hose U690.8899
 Cap U691.0033
 Vent cap U691.0034
 Decal 781.12.973.001

590.29.050.000

FUNNEL

Funnel specially developed for KTM motorcycles. Diameter (small and large) optimized to suit the filler neck; special groove for optimum ventilation.





780.12.006.000

PIT MAT

Now required at many racing events. The special material mix prevents spilt fuel from seeping into the ground. The mat also helps in finding fallen tools, bolts and other small loose parts when servicing outdoors. The special KTM design brings the total factory look to your pit.
Size: 5' X 3'3"

790.29.930.000

PIT BOARD

To display the most important information to your rider during racing and practice. Marker included.



790.12.906.000

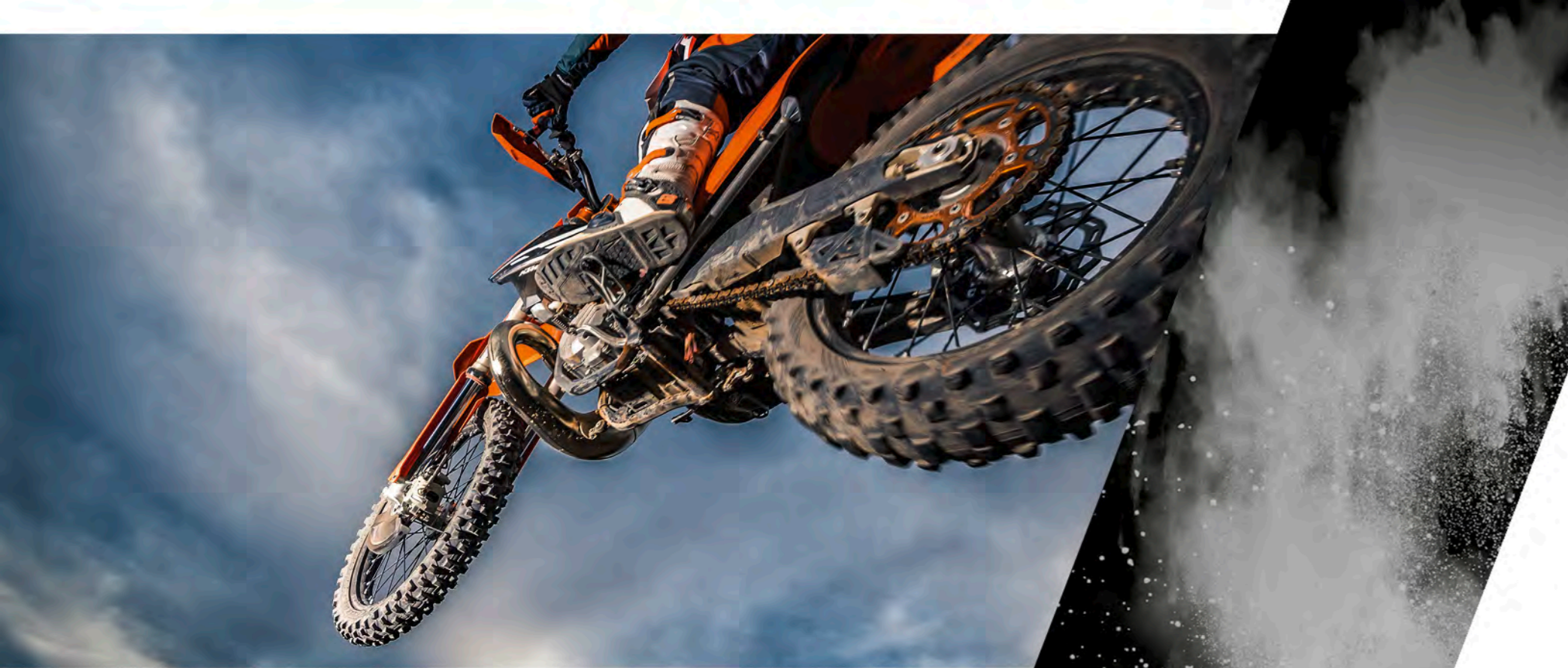
PIT MAT

Features:

- Made from polyester, with special rubberized back
- Gas and oil resistant
- READY TO RACE design
- Size: 3'3" x 5'6"



01
02
03
04
05
06
07
08
09
10
11
12
13
14
15
16
17
18
19
20



50 **50**
50-State Legal

MAP **MAP**

There is a specially developed engine software (mapping) for products marked with the MAP symbol. This mapping has been designed by our engine development department for optimum performance as well as durability of the components, and can only be uploaded by your authorized KTM dealer.

613.12.007.000

PROTECTIVE COVER OUTDOOR "BEAST"

The KTM outdoor bike cover provides year round protection for your motorcycle. Cover is made from an exclusive, pigmented fabric. Carrier bag included.



600.12.016.000

HIGH SECURITY U-LOCK

High quality U-lock made from hardened steel with a double locking mechanism. Locking cylinder with optimum protection against any attempts at manipulation. 250,000 key versions. 2 keys supplied as standard. Includes rotating PVC cover that protects the cylinder lock from dirt. High quality corrosion protection.



625.12.007.000

PROTECTIVE COVER INDOOR

No chance for dust, scratches, etc. The indoor bike cover turns every KTM into a real eye-catcher in the garage. The fabric consists of a special material with a distinctive structure that is completely impermeable to dust and dirt. The inner side has a soft lining.

590.12.007.000

PROTECTIVE COVER OUTDOOR

The KTM outdoor bike cover provides year round protection for your motorcycle. The cover is made from an exclusive, pigmented fabric. Carrier bag included.

SXS PARTS

ENGINE

EXHAUST

HANDLEBAR + INSTRUMENTS/ELECTRIC

CNC PARTS ANODIZED

PLASTIC PARTS + DECALS

SEATS

FOOTPEGS

TANKS

SUSPENSION

WHEELS

CHAINS + SPROCKETS

BRAKES

COOLING

PROTECTION

AIRFILTER

NAVIGATION + LUGGAGE

FREERIDE

50 / 65 / 85 SX

TOOLS + TRANSPORTATION

READY TO RACE
» www.ktm.com

Always consult your local authorized KTM dealer for the range of conversion parts, replacement parts, necessary mounting parts, as well as any and all part options for your particular KTM model.

KTM IS NOT LIABLE FOR IMPROPER INSTALLATION OR USE OF ANY OF ITS PRODUCTS.

Please follow all instructions provided. Professional advice and proper installation of the KTM PowerParts by an authorized KTM dealer are essential to provide maximum safety and function. KTM reserves the right to alter or discontinue without replacement, equipment, technical details, colors, pricing, materials, services, service work etc. without notice and without reason, as well as to cease production of certain models without prior notice. For this reason, we recommend you ask your local authorized KTM dealer for further information before ordering or purchasing a specific PowerPart.

KTM is not responsible for printing errors.

Most of the items in this catalog have been designed/developed especially for the needs and demands of off-road/motocross racing, intended for use only in closed course competition. Some modifications may void your motorcycle's original certification status, please contact an authorized KTM dealer for more information.

The items in this catalog have been developed and are intended for closed course competition use and racing applications only, any other usage violates U.S. Federal and or State Law and could be subject to fines. Only items explicitly designated to be "50 State Legal" have been developed and are approved to meet U.S. Federal and California emission requirements for highway/on-road use.



* 3 2 1 2 7 0 2 U S *

KTM
AUTHORIZED DEALER

KTM

KTM NORTH AMERICA INC.
1119 Milan Ave Amherst, OH 44001
38429 Innovation Court Murrieta, CA 92563
1375-1 Marie-Victorin, Saint Bruno, Quebec J3V 6B7
www.ktm.com



KTM POWERPARTS **KTM ORIGINAL SPARE PARTS**
KTM POWERWEAR **KTM FACTORY RACING**



© KTM NORTH AMERICA, INC. 2015

Photos: R. Schedi, H. Mitterbauer, S. Cudby, J. P. Acevedo, Future 7 Media, M. Campelli, C. Morello

