

tm RACING

USES & RECOMMENDS



models
year 175



1998
World Champion
Enduro 125 CC



2009
World Champion
Supermoto



2010
World Champion
Supermoto



2012
World Champion
Baja 450



2012
World Champion
Supermoto



2012
World Champion
Supermoto
Manufacturer



2013
World Champion
Baja Overall 450



2013
World Champion
Supermoto
Manufacturer



2014
World Champion
Supermoto



2014
World Champion
Supermoto
Manufacturer

#4 Thomas Chareyre



World Champion
Supermoto
2014



World Champion
Supermoto
Manufacturer
2014



Invincible weapon in every



Models: ←
SMX 250 Fi 4T
SMX 450 Fi 4T
SMX 530 Fi 4T

SMX SUPERMOTO 4tempo // 4stroke

SMX **450** Fi 4T



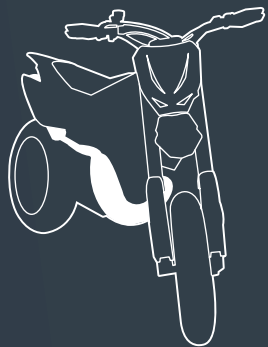
ry competition





#189 Marco Dondi

»POWER & COMPONENTS
TO THE TOP



Models: ←
SMX 125 2T
SMX 250 2T
SMX 300 2T

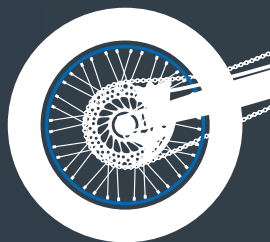
SMX SUPERMOTO 2temp//2stroke

SMX **300** 2T

OPTIONALS:

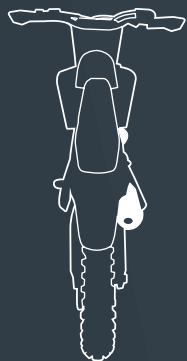
»Cerchi disponibili
anche con sTs Tubles

*Wheels available
also with sTs Tubles*





#39 Davide Guarneri
» **MAXIMUM GRIP & CONTROL**



Models: ←
MX 450 Fi 4T
MX 530 Fi 4T

MOTOCROSS 4tempi//4stroke

MX **450** Fi 4T





EUROPEAN
EMX 300



CHAMPION

#321 samuele Bernardini
»AGILITY & FUN

Models: <
MX 250 2T
MX 300 2T

MOTOCROSS 2tempi//2stroke

Valvola di scarico elettronica

MX **300** 2T



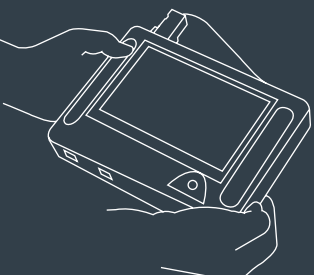
ASSURED

Models: ←
MX 250 Fi 4T

MOTOCROSS 4tempi//4stroke

MX **250** Fi 4T

OPTIONALS:



»Programmazione
e diagnostica Microtec

*Diagnostic
and programming
by Microtec*

see page 34«



Models: ←
MX 85 // 80 // 100 CC

MOTOCROSS junior minimotard

MX **85**

OPTIONALS:

»RUOTE 16-19
(modello in foto)

»Ruote 14-17
(misure ruote
alternativa)

»Ruote 12-12
Versione
Minimotard
con assetto
ribassato
(modello
alternativo
a quello in foto)

»WHEELS 16-19
(model in photo)

»WHEELS 14-17
(alternative
measures wheels)

»WHEELS 12-12
Version
Minimotard with
low altitude
(alternative
model to the one
in the photo)

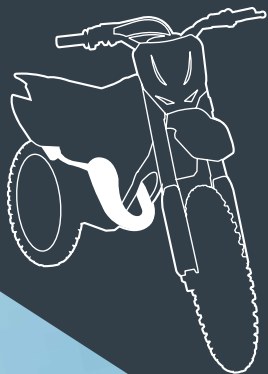




#22 Lorenzo Ravera

»LIGHTWEIGHT & MANAGEABLE

#199 Lorenzo Ravera



Models: ←
MX 125 2T
MX 144 2T

MOTOCROSS 2tempi//2stroke

MX **125** 2T





#8 Benjamin Herrera

»AGGRESSIVE
and ready to shot

Models: <
EN 125 2T
EN 144 2T

ENDURO 2temp//2stroke

EN **125** 2T

OPTIONALS:

Forcella Kayaba
Ø 48
disponibile
per EN e MX



Fork Kayaba
Ø 48
available
for EN and MX

see page 34«

Mono Tm Racing
per EN ,MX e SM



Mono Tm Racing
for EN ,MX and
SM

see page 32«





#85 Aigar Leok
»COMPETITIVE
ON ANY SURFACE



Models: <
EN 250 2T
EN 300 2T

ENDURO 2temp//2stroke

EN **250** 2T

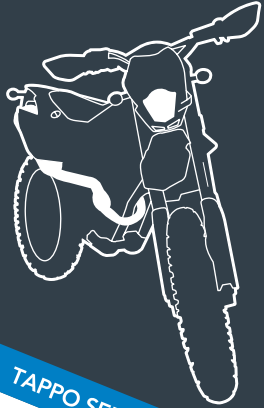


#34 Eero Remes



»DURABLE & ATTRACTIVE





Models: ←
EN 250 Fi 4T

ENDURO 4tempi//4stroke

EN **250** Fi 4T

TAPPO SERBATOIO // TANK CAP



Models: <
EN 450 Fi 4T

ENDURO 4tempi//4stroke

EN **450** Fi 4T



ENDURO

4T
450
Fi

4T
530
Fi

P. 20

Models: <
EN 530 Fi 4T

ENDURO 4tempi//4 stroke

EN **530** Fi 4T





Alex Zanotti
**» THE RIGHT FEELING
WITH THE TRACK**



Models: <
RALLY 450 Fi 4T

RALLY 4tempi//4 stroke

RALLY **450** Fi 4T



Models: ←
SMR 125 2T
SMR 250 2T
SMR 300 2T

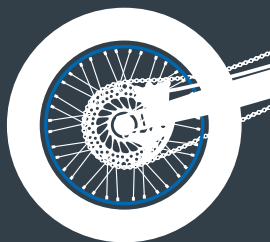
SMR SUPERMOTO 2tempo//2stroke

SMR **125** 2T

OPTIONALS:

»Cerchi disponibili
anche nero

Wheels available
also black



Models: ←
SMM 125 2T
SMM 250 2T
SMM 300 2T

SMM SUPERMOTO 2tempi//2stroke

SMM **125** 2T





Models: ←
SMR 250 Fi 4T
SMR 450 Fi 4T
SMR 530 Fi 4T

SMR SUPERMOTO 4tempi//4stroke

SMR **530** Fi 4T



Models: ←
SMM 250 Fi 4T
SMM 450 Fi 4T
SMM 530 Fi 4T

SMM SUPERMOTO 4tempì//4stroke

SMM **530** Fi 4T



MOTOCROSS

ENDURO

SUPERMOTO

MX JUNIOR <<<



EN 125 <<<
EN 144



SMR 125 <<<
SMR 250
SMR 300



MX 125 <<<
MX 144



EN 250 <<<
EN 300



SMR 250 Fi <<<
SMR 450 Fi
SMR 530 Fi



MX 250 <<<
MX 300



EN 250 Fi <<<



SMM 125 <<<
SMM 250
SMM 300



MX 250 Fi <<<



EN 450 Fi <<<
EN 530 Fi



SMM 250 Fi <<<
SMM 450 Fi
SMM 530 Fi



MX 450 Fi <<<
MX 530 Fi



SMX 300 <<<



SMX 250 Fi <<<
SMX 450 Fi
SMX 530 Fi



MX JUNIOR

ENDURO SUPERMOTO

CROSS - SMX

* MP: monoposto - Single-seater / BP: biposto - Two-seater **I motocicli fotografati possono essere equipaggiati di optional non di serie - The show motorcycles can be equipped with optional out of series

MODELS	TM 80	TM 85	TM 100
CILINDRATA c.c. CC Displacement	80	85	100
ALES. & CORSA mm Bore & Stroke mm	46.5 x 47	47.95 x 47	52 x 47
TIPO AVVIAMENTO Starting	Pedale Kick start		
ALIMENTAZIONE Induction	Carburatore Keihin Ø 28 Carburetor Keihin Ø 28		
CARBURANTE Fuel	Senza Piombo 3,5 % Unleaded 3,5 %		
ACCENSIONE Ignition	Elettronica Kokusan Cdi anticipo variabile Electronic Kokusan with variable advance Cdi		
CAMBIO Gearbox	6 rapporti 6 gears		
FORCELLA Front Fork	Formula Ø 39 doppia regolazione Ø 39 formula double adjustment		
SOSPENSIONE POST. Rear Suspension	Extreme Tech doppia regolazione Extreme Tech double adjustment		
PNEUMATICO ANT. Front Tyre	70/100 x 17 (J 14/17) 70/100 x 19 (J 16/19)		
PNEUMATICO POST. Rear Tyre	90/100 x 14 (J 14/17) 90/100 x 16 (J 16/19)		
FRENO ANT. Front Brake	Disco Ø 220 Braking, pinza Braking e pompa freno Brembo Disk Ø 220 Braking with Brembo pump and Braking caliper		
FRENO POST. Rear Brake	Disco Ø 190 Braking e impianto frenante Braking Disk Ø 190 Braking with Braking brake system		
SERBATOIO Tank	6 lt		
FRIZIONE Clutch	A dischi multipli in bagno d'olio con comando idraulico Multiple-disk in oil-bath with hydraulic control		
TRASMISSIONE PRIMARIA Primary Drive	Ingranaggi a denti dritti Straight - tooth gear		
TELAIO Frame	Perimetrale in alluminio Aluminium perimetral		

MODELS	125 MP 144 MP	250 MP	300 MP	250 Fi BP	450 Fi BP	530 Fi BP
CILINDRATA c.c. CC Displacement	123,534 143,3	249	294	249	449	528
ALES. & CORSA mm Bore & Stroke mm	54 x 54,5 56 x 58,2	66,4 x 72	72 x 72	77 x 53,6	95 x 63,4	98 x 70
TIPO AVVIAMENTO Starting	Pedale Kick start		Pedale o Elettrico Kick start or Electric start			
ALIMENTAZIONE Induction	Carburatore Keihin Ø 38 PWK Carburetor Keihin Ø 38 PWK		Fuel Inj. Throttle Body			
CARBURANTE Fuel	Senza Piombo 3,5% Unleaded 3,5 %		Senza Piombo Unleaded			
ACCENSIONE Ignition	Elettronica Kokusan Cdi anticipo variabile: EK / Elettronica Microtec: EM Generatore Kokusan: GK - Electronic Kokusan with variable advance Cdi: EK Microtec Electronic: EM / Kokusan Generator: GK					
	EK	EK	EK	EN: GK - EM SM: EK	EN: GK - EM SM: EK	EK
CAMBIO Gearbox	6 rapporti 6 gears	5 rapporti 5 gears	6 rapporti 6 gears	5 rapporti 5 gears		
FORCELLA Fork	EN Marzocchi Ø 50 - Optional Kayaba Ø 48 SM Marzocchi Ø 50					
SOSPENSIONE POST. Rear Suspension	EN 2T Tm Racing - Optional Ohlins TTX EN 4T - SMR SMM Sachs - Optional Tm Racing, Ohlins TTX					
PNEUMATICO ANT. Front Tyre	EN 90/90 x 21 / SM 110/700 x 17 - 120/70 x 17					
PNEUMATICO POST. Rear Tyre	EN 120/90 x 18 1.85"	EN 140/80 x 18 2.50"	EN 120/90 x 18 1.85"	EN 140/80 x 18 2.50"		
	SM 150/60 x 17					
FRENO ANT. Front Brakes	EN disco WAVE Ø 270 Braking - WAVE disk Ø 270 Braking SM disco WAVE Ø 320 Braking - WAVE disk Ø 320 Braking					
FRENO POST. Rear Brakes	EN disco WAVE Ø 245 Braking - WAVE disk Ø 245 Braking / disco WAVE SMM Ø 220 Braking SMR Ø 245 Braking - WAVE disk SMM Ø 220 Braking SMR Ø 245 Braking					
SERBATOIO Tank	8,2 lt in plastica 8,2 lt in plastic					
DISTRIBUZIONE Timing System	EN Valvola scarico elettronica (TM EES) EN Electronic exhaust valve (TM EES)		Bialbero 4 V in titanio con bilanciere a dito DOCH with finger follower 4 titanium V.		Bialbero 4 valvole DOCH 4 valves	

MODELS	125 144	250	300	250 Fi	450 Fi	530 Fi	450 Fi SMX	530 Fi SMX
CILINDRATA c.c. CC Displacement	123,534 143,3	249	294	249	449	528	449	528
ALES. & CORSA mm Bore & Stroke mm	54 x 54,5 56 x 58,2	66,4 x 72	72 x 72	77 x 53,6	95 x 63,4	98 x 70	95 x 63,4	98 x 70
TIPO AVVIAMENTO Starting	Pedale Kick start		Pedale o Elettrico Kick start or Electric start					
ALIMENTAZIONE Induction	Carburatore Keihin Ø 38 PWK Carburetor Keihin Ø 38 PWK		Fuel Inj. Throttle Body					
CARBURANTE Fuel	Senza Piombo 3,5% Unleaded 3,5 %		Senza Piombo Unleaded					
ACCENSIONE Ignition	Elettronica Kokusan Cdi anticipo variabile: EK / Elettronica Microtec: EM Generatore Kokusan: GK - Electronic Kokusan with variable advance Cdi: EK Microtec Electronic: EM / Kokusan Generator: GK							
	EK	EK	EK	GK - EM	GK - EM	EK	GK - EM	EK
CAMBIO Gearbox			5 rapporti 5 gears					
FORCELLA Fork	MX Marzocchi Ø 50 - Optional Kayaba Ø 48 SMX Marzocchi Ø 50							
SOSPENSIONE POST. Rear Suspension	MX 2T Tm Racing - Optional Ohlins TTX MX 4T - SMX Sachs - Optional Tm Racing, Ohlins TTX							
PNEUMATICO ANT. Front Tyre	MX 80/100 x 21 / SMX 120/70 x 17 - 3.50" Optional TBL STS Alpina 16.5 - 3.50" - SMX Optional 16 - 3.50"							
PNEUMATICO POST. Rear Tyre	100/90x19 1.85"	110/90 x 19 2.15"	100/90x19 1.85"	110/90x19 2.15"	110/90x19 2.50"	170/55 x 19 - 5" Opt. TBL STS Alpina 17-5.5"		
FRENO ANT. Front Brakes	MX disco WAVE Ø 270 Braking MX WAVE disk Ø 270 Braking SMX disco WAVE Ø 305 Braking pompa radiale Accossato 16.16 SMX WAVE disc Ø 305 Braking with radial frontcaliper Accossato 16.16							
FRENO POST. Rear Brakes	Disco WAVE Ø 245 Braking WAVE disk Ø 245 Braking							
SERBATOIO Tank	8,2 lt in plastica 8,2 lt in plastic							
DISTRIBUZIONE Timing System	MX Valvola scarico elettronica (TM EES) MX Electronic exhaust valve (TM EES)		Bialbero 4 V in titanio + bilanciere a dito DOCH + finger follower 4 titanium V.		Bialbero 4 valvole DOCH 4 valves			

»TM RACING OFFROAD

SPECIAL RACING PARTS



» Piedino interasse variabile
Adjustable shock foot

Piedino interasse variabile per mono TTX SMX.
Adjustable shock foot for SMX TTX shock.



» Triangolo leveraggio / *Linkage triangle*



» Biella leveraggio
Linkage connecting rod



» Piedino TM per forcella Marzocchi
TM axle bracket for Marzocchi fork

Piedino TM per forcella Marzocchi Ø 50 int. 108 mm per SMX.

TM axle bracket for Marzocchi fork Ø 50 dist. 108-mm for SMX.



» Paramani CIRCUIT per Supermoto
Supermotard hands protection



» Frizione antisaltellamento
Anti-slip clutch

Frizione antisaltellamento per 450/530 (4 tempi) e per 250/300 (2 tempi).

Anti-slip clutch for 450/530 (4 stroke) and 250/300 (2 stroke).

»FRENI / BRAKES

»dischi freni / disc brakes:



Airbox / Airbox

Airbox (monta solo fino al 2014) per SMX.

Airbox (mounts only until 2014) for SMX.



Pinza freno anteriore / Front brake caliper

Pinza freno anteriore Brembo Racing CNC int. 108 mm per SMX.

CNC front Brembo Racing brake caliper dist. 108 mm for SMX.



Pompa Freno Anteriore / Front master cylinder

Pompa freno anteriore Brembo Racing 16/16 per SMX.

Front master cylinder Brembo Racing 16/16 for SMX.



Pinza freno anteriore / Front brake caliper

Pinza freno anteriore CNC tipo DONDI int. 100 mm per SMX con pastiglie Brembo Z04.

CNC front brake caliper DONDI type int. 100 mm for SMX with Brembo pads Z04.



Pedane CNC SMX / CNC SMX Footpegs



Disco freno posteriore / Rear brake disc

Disco freno posteriore Ø 205 mm.

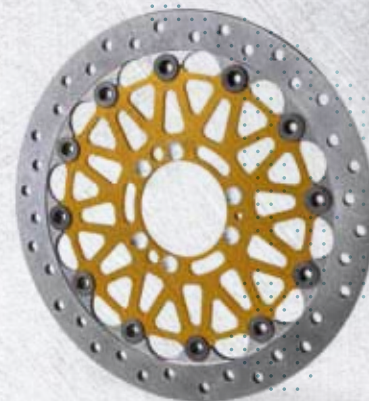
Rear brake disc Ø 205 mm.



Attacco pinza freno / Brake caliper adapter

Attacco pinza freno posteriore CNC per disco posteriore Ø 205 mm.

CNC rear brake caliper adapter for rear brake disc Ø 205 mm.



Disco freno anteriore / Front brake disc

Disco freno anteriore Brembo Racing d.305 mm sp. 6.5 mm per SMX.

Front Brembo Racing brake disc Ø 305 mm th. 6.5 mm for SMX.

SPECIAL RACING PARTS

P. 32



» Coperchio accensione CNC
CNC ignition cover

Coperchio CNC lato accensione
per 450 e 530.

CNC ignition cover for 450
and 530.



» Coperchio frizione CNC
CNC clutch cover

Coperchio CNC lato frizione per 450 e 530.

CNC clutch cover for 450 and 530.





» Paramani CIRCUIT per Motocross
Motocross hands protection

Silenziatore / Silencer

Silenziatore HGS per Enduro 2 tempi.

HGS Enduro silencer 2 stroke.

Mono TM Racing / TM Racing shock

Per Enduro, Motocross e supermoto.

For Enduro, Motocross e supermotard.



Pedane CNC MX / EN Footpegs



FORCELLA

una precisione di sterzo
 seconda a nessuno

PEDANE

perfette in ogni condizione
 climatica e di terreno

SILENZIATORE

accelerazione più sensibile
 e migliore trazione

DISCO FRENO

una dose extra di performance frenante

»FORCELLA / FORK:

P. 34



Forcella Kayaba / Kayaba fork
Forcella Kayaba Ø 48 per Enduro e Motocross.

Kayaba fork Ø 48 for Enduro and Motocross.



Chiave poligonale TM
TM special tool

Chiave poligonale 20/20.5 + 26 multifunzione per dado ruota anteriore (pos.1), candela (pos.2) e dado ruota posteriore 26 mm, disponibile anche per dado ruota posteriore 32 mm.

Special tool for front wheel nut (pos.1), spark plug (pos.2) and rear wheel nut 26 mm. and for wheel nut 32 mm.

Programmazione e diagnostica
Microtec
Diagnostic and programming
by Microtec



Bicicletta / *Bicycle*

Bicicletta MTB.

Bicycle MTB.



Bicicletta / *Bicycle*

Bicicletta da strada.

Road bicycle.



»TM STYLE EQUIPMENT COLLECTION 2015

WEARING THE VICTORY

style cap



team shirt



Maglietta uomo / T-shirt for man



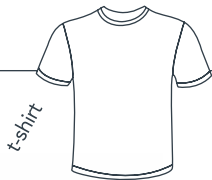
Polo uomo / Polo for man



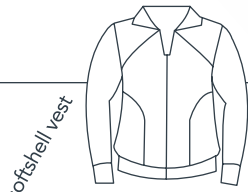
Camicia uomo / Shirt for man



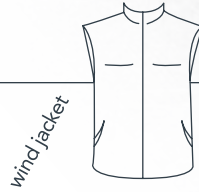
team hoodie



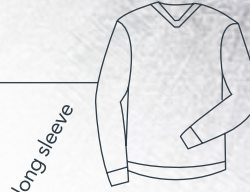
t-shirt



softshell vest



wind jacket



long sleeve



Felpa uomo / Hoodie for man



Giubbotto uomo / Jacket for man



Cappellino TM / TM hat



Cappellino invernale TM / TM beanie



Pile nero uomo / Black pile for man

HERO REMES

41 PODIUMS
IN WORLD CHAMPIONSHIP



»VINTAGE WEARING

P. 38



Maglietta vintage / Vintage T-shirt



Felpa vintage / Vintage hoodie



Cappellino vintage / Vintage hat

Giacca e pantaloni Pilota
Jersey and pants for Rider

Giacca e pantaloni per Pilota Motocross e Enduro.
Jersey and pants for Motocross and Enduro Rider.



Guanti Pilota / Rider gloves





Giubbotto donna e bambino
Jacket for woman and children



Felpa donna e bambino
Hoodie for woman and children



Polo donna e bambino
Polo for woman and children



K-Way





TM RACING S.p.A.

Via Fano, 6 // 61122 Pesaro // Italy

Ph. +39 0721.25113 »Fax +39 0721.401808

www.tmracing.it // info@tmracing.it

Seguici su:  

DEALER

